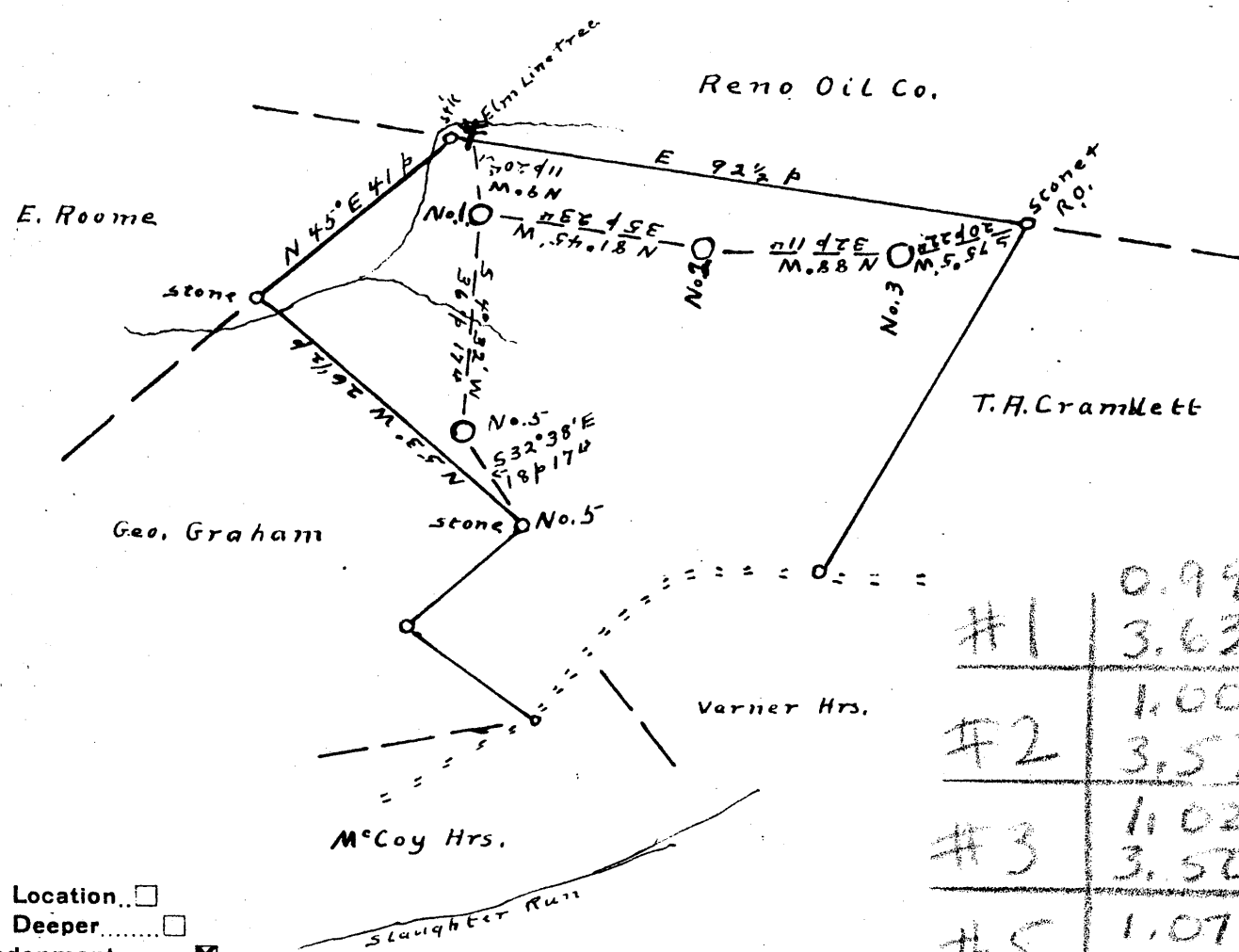


(545) 3.59 W 0.58 S
 (551) 3.43 W 1.01 S
 (556) 3.62 W 1.06 S
 (550) 3.52 W 1.00 S



#1	0.99 S
#1	3.63 W
#2	1.00 S
#2	3.57 W
#3	1.02 S
#3	3.50 W
#5	1.07 S
#5	3.68 W

New Location
 Drill Deeper
 Abandonment

Company J.R. Bull
 Address Sistersville, W.Va.
 Farm Thistle-Shay
 Tract 1 Acres 40 Lease No. 6072
 Well (Farm) No's 1, 2, 3 & 5 Serial No. No. 1 - 834' No. 3 - 949'
 Elevation (Spirit Level) No. 2 - 839' No. 5 - 839'
 Quadrangle New Martinsville
 County Tyler District Lincoln
 Engineer Don L. Riggle
 Approved by George R. Clarke
 Engineer's Registration No. 102
 File No. 0+G-S.P. 11 Drawing No. 1398
 Date May 19, '48 Scale 1" = 30'

STATE OF WEST VIRGINIA
 DEPARTMENT OF MINES
 OIL AND GAS DIVISION
 CHARLESTON
 JYL-556-A-#5
WELL LOCATION MAP
 JYL-548-A-#1
 FILE NO. JYL-550-A-#2
 JYL-551-A-#3

+ Denotes location of well on United States Topographic Maps, scale 1 to 62,500, latitude and longitude lines being represented by border lines as shown.

- Denotes one inch spaces on border line of original tracing.