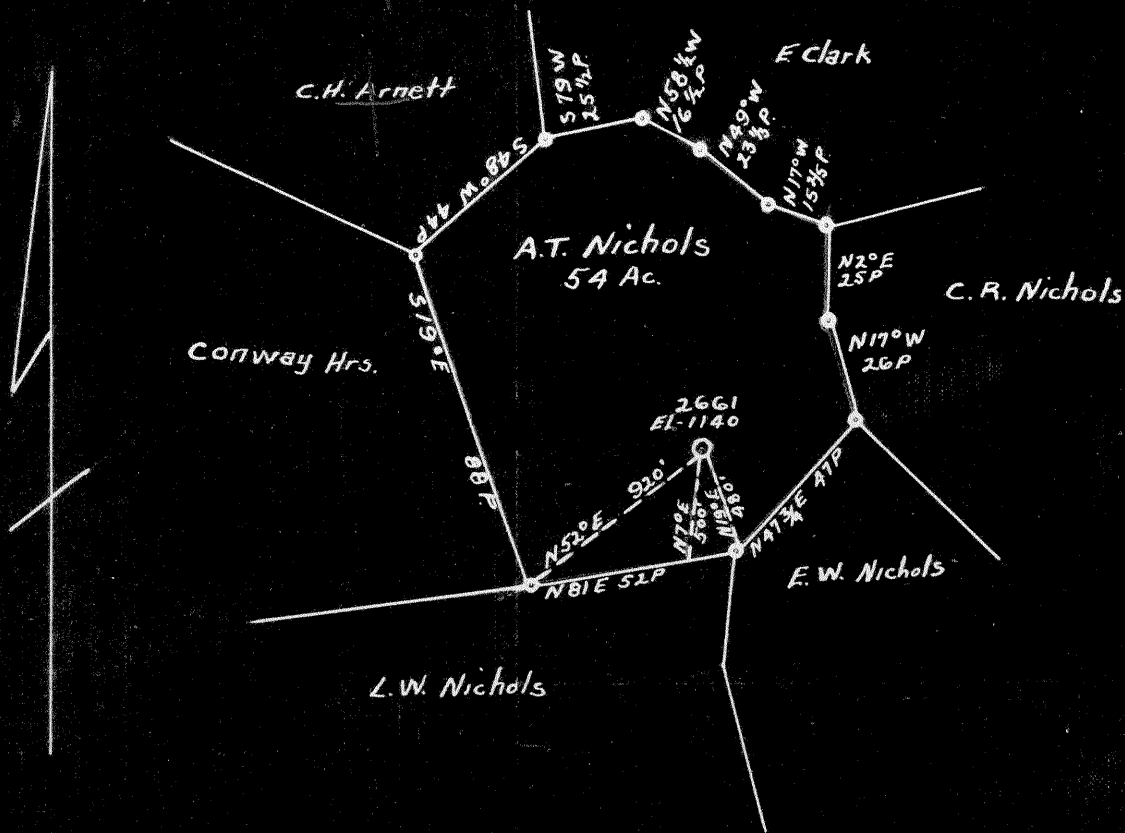


LATITUDE 39° 30'

LONGITUDE 80° 45'



1.01 S  
2.05 W

COAL OWNED BY A.T. Nichols Meeker W. Va.

NEW LOCATION.....   
 DRILL DEEPER.....   
 ABANDONMENT.....

COMPANY The Manufacturers Light & Heat Co  
 ADDRESS 800 Union Trust Bldg Pittsburgh Pa  
 FARM A.T. Nichols  
 TRACT \_\_\_\_\_ ACRES 54 LEASE No. 3533  
 WELL (FARM) No. 1 SERIAL No. 2661  
 ELEVATION (SPIRIT LEVEL) 1140'  
 QUADRANGLE West Union  
 COUNTY Tyler DISTRICT McElroy  
 ENGINEER Vicent Urcic  
 ENGINEER'S REGISTRATION No. \_\_\_\_\_  
 FILE No. \_\_\_\_\_ DRAWING No. Y-13-169  
 DATE Feb 21 1949 SCALE 1" = 800'

STATE OF WEST VIRGINIA  
 DEPARTMENT OF MINES  
 OIL AND GAS DIVISION  
 CHARLESTON

WELL LOCATION MAP

FILE No. JYL-565-A

+ DENOTES LOCATION OF WELL ON UNITED STATES TOPOGRAPHIC MAPS. SCALE 1 TO 62,500. LATITUDE AND LONGITUDE LINES BEING REPRESENTED BY BORDER LINES AS SHOWN.

- DENOTES ONE INCH SPACES ON BORDER LINE OF ORIGINAL TRACING.



STATE OF WEST VIRGINIA  
DEPARTMENT OF MINES  
OIL AND GAS DIVISION

500

WELL RECORD

Permit No. 565-A

Oil or Gas Well (KIND)

Company The Manufacturers Light & Heat Company  
 Address 800 Union Trust Bldg., Pittsburgh, Pa.  
 Farm A.T. & A.J. Nichols Acres 5 1/4  
 Location (waters) \_\_\_\_\_  
 Well No. 2661 Elev. \_\_\_\_\_  
 District McElroy County Tyler  
 The surface of tract is owned in fee by A. T. Nichols, Agt.  
 Address Meeker, W. Va.  
 Mineral rights are owned by The Mfrs. Light & Heat Co.  
800 Union Trust Bldg. Address Pittsburgh, Pa.  
 Drilling commenced March 3rd., 1921  
 Drilling completed April 23rd., 1921  
 Date Shot \_\_\_\_\_ From \_\_\_\_\_ To \_\_\_\_\_  
 With \_\_\_\_\_  
 Open Flow \_\_\_\_\_ /10ths Water in \_\_\_\_\_ Inch  
 \_\_\_\_\_ /10ths Merc. in \_\_\_\_\_ Inch  
 Volume \_\_\_\_\_ Cu. Ft.  
 Rock Pressure \_\_\_\_\_ lbs. \_\_\_\_\_ hrs.  
 Oil \_\_\_\_\_ bbls., 1st 24 hrs.  
 Fresh water \_\_\_\_\_ feet \_\_\_\_\_ feet  
 Salt water \_\_\_\_\_ feet \_\_\_\_\_ feet

Casing and Tubing	Used in Drilling	Left in Well	Packers
Size			
16			Kind of Packer
18			
10	285		Size of
8 1/4	1278 1/4"		
6 1/2			Depth set
5 3/16			
3			Perf. top
2			Perf. bottom
Liners Used			Perf. top
			Perf. bottom

CASING CEMENTED \_\_\_\_\_ SIZE \_\_\_\_\_ No. Ft. \_\_\_\_\_ Date \_\_\_\_\_  
 COAL WAS ENCOUNTERED AT 715 FEET 12 INCHES  
 \_\_\_\_\_ FEET \_\_\_\_\_ INCHES \_\_\_\_\_ FEET \_\_\_\_\_ INCHES  
 \_\_\_\_\_ FEET \_\_\_\_\_ INCHES \_\_\_\_\_ FEET \_\_\_\_\_ INCHES

Formation	Color	Hard or Soft	Top	Bottom	Oil, Gas or Water	Depth Found	Remarks
Surface			0	15			
Slate			15	45			
Red Rock			45	70			
Lime			70	88			
Sand			88	115			
Slate			115	148			
Red Rock			148	190			
Slate			190	245			
Lime			245	276			
Slate			276	320			
Red Rock			320	356			
Lime			356	380			
Red Rock			380	425			
Slate			425	456			
Lime			456	472			
Red Rock			472	488			
Lime			488	515			
Red Rock			515	580			
Sand			580	630			
Slate			630	715			
Pittsburgh Coal			715	716			
Lime			716	734			
Slate			734	790			
Sand			790	815			
Lime			815	822			
Red Rock			822	830			
Lime			830	839			
Slate			839	850			
Lime			850	875			
Red Rock			875	960			
Red Rock			960	998			
Lime			998	1016			
Slate			1016	1022			
Red Rock			1022	1044			
Lime			1044	1064			
Red Rock			1064	1105			
Slate			1105	1110			
Shale			1110	1130			
Lime			1130	1142			
Slate			1142	1165			

Water 3/4 bailer per hr.

FEB 1922  
 DEPARTMENT OF MINES

Formation	Color	Hard or Soft	Top	Bottom	Oil, Gas or Water	Depth Found	Remarks
Lime			1165	1170			
Slate			1170	1205			
Lime			1205	1217			
Slate			1217	1240			
Lime			1240	1320			
Sand			1320	1350			
Slate			1350	1380			
Slate			1380	1432			
Lime			1432	1451			
Sand			1451	1510			
Slate			1510	1560			
Shale			1560	1575			
Lime			1575	1595			
Salt Sand			1595	1635	Water at 1605'		
Lime			1635	1645	2 bailers per hr.		
Slate			1645	1655			
Lime			1655	1665			
Sand			1665	1680			
Lime			1680	1720			
Slate			1720	1730			
Lime			1730	1738			
Sandy Lime			1738	1760			
Slate			1760	1780			
Lime			1780	1800			
Slate			1800	1825			
Maxon Sand			1825	1868	Show of oil and		
Pencil Cave			1928	1933	gas at 1840'		
Big Lime			1933	2000			
Big Injun			2000	2215			
Lime Shells			2215	2350			
Gantz Sand			2350	2430			
Slate			2430	2458			
Sand			2458	2478			
Slate			2478	2481			
Lime			2481	2487			
Slate			2487	2532			
Lime			2532	2558			
Slate			2558	2565			
Lime			2565	2576			
Lime			2576	2615			
Slate			2615	2620			
Lime			2620	2655			
Slate & Lime Shells			2675	2695			
Slate & Lime			2695	2793			
Gordon Sand			2793	2806	Gas at 2792'-2794'		
Slate			2806	2814			
Lime			2814	2830			
Slate			2830	2840			
TOTAL DEPTH			2840				

Date FEBRUARY 23, 194 9

APPROVED THE MANUFACTURERS LIGHT AND HEAT CO., Owner

By W. S. Cooper LAND AGENT.  
(Title)