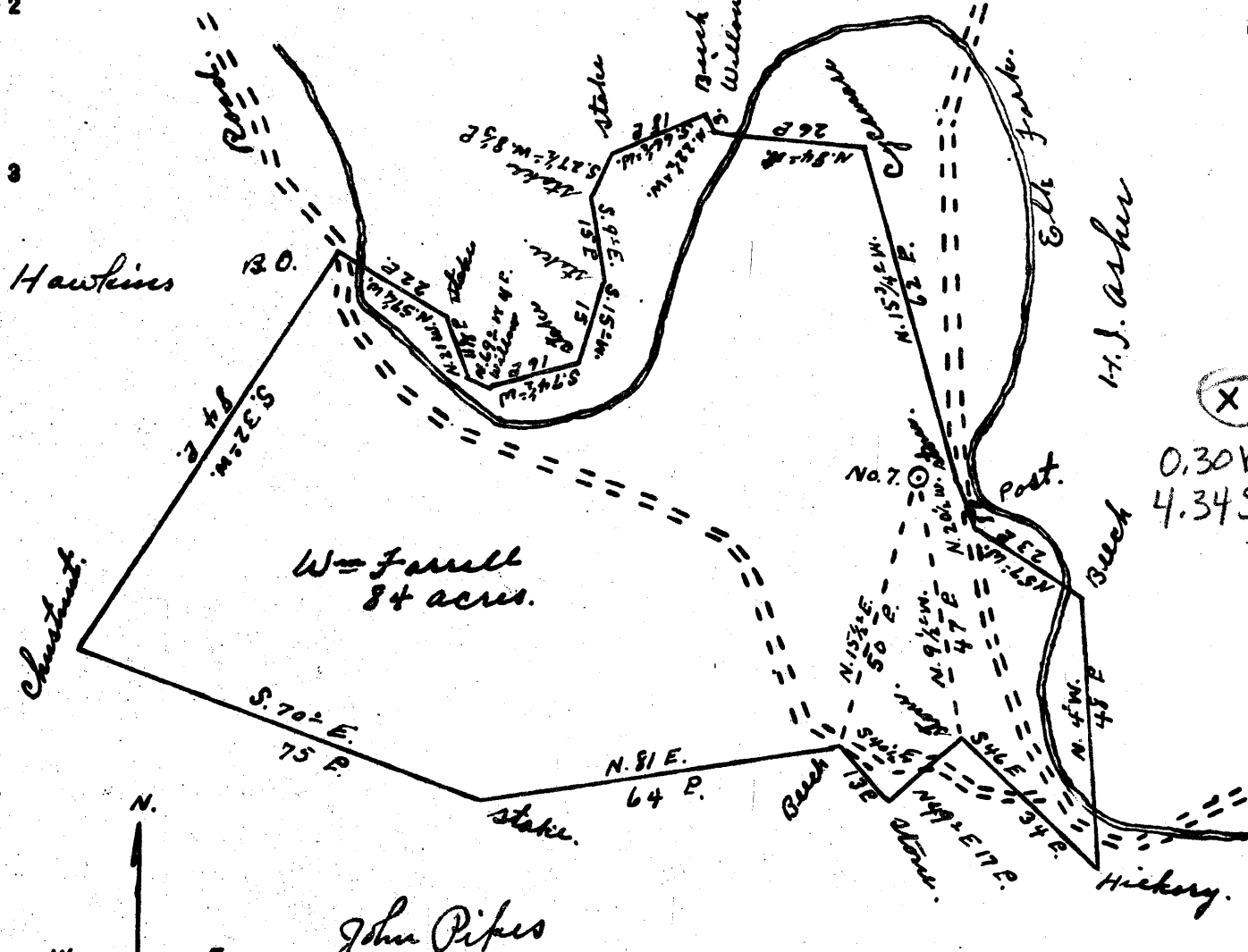


Latitude 39° 35'

Longitude 80° 50'

H. J. Asher



(X)  
0.30W  
4.34S

- New Location...
- Drill Deeper.....
- Abandonment.....

FEB 1 1953

STATE OF WEST VIRGINIA  
DEPARTMENT OF MINES  
OIL AND GAS DIVISION  
CHARLESTON

WELL LOCATION MAP  
FILE NO. JYL-818-A

+ Denotes location of well on United States Topographic Maps, scale 1 to 62,500, latitude and longitude lines being represented by border lines as shown.

- Denotes one inch spaces on border line of original tracing.

Company Reno Oil Company  
 Address Sistersville W. Va.  
 Farm Wm Farrell  
 Tract \_\_\_\_\_ Acres 84 Lease No. \_\_\_\_\_  
 Well (Farm) No. 7 Serial No. \_\_\_\_\_  
 Elevation (Spirit Level) 760'  
 Quadrangle New Martinsville  
 County Tyler District Ellsworth  
 Engineer Robert R. Anderson  
By Geo Triplett, Surveyor.  
 Engineer's Registration No. 296  
 File No. \_\_\_\_\_ Drawing No. \_\_\_\_\_  
 Date Nov. 10, 1952 Scale 1" = 30 P.

STATE OF WEST VIRGINIA  
DEPARTMENT OF MINES  
OIL AND GAS DIVISION

705

WELL RECORD

Permit No. 818-A

Oil or Gas Well Oil  
(Kind)

Company Reno Oil Company,  
 Address Sistersville, W. Va.  
 Farm Wm. Ferrell Acres 24  
 Location (waters) \_\_\_\_\_  
 Well No. Seven Elev. 760  
 District Ellsworth County Tyler  
 The surface of tract is owned in fee by Wm. Ferrell  
 Address Middlebourne, W. Va.  
 Mineral rights are owned by \_\_\_\_\_  
 Address \_\_\_\_\_  
 Drilling commenced \_\_\_\_\_  
 Drilling completed \_\_\_\_\_  
 Date shot \_\_\_\_\_ Depth of shot \_\_\_\_\_  
 Open Flow /10ths Water in \_\_\_\_\_ Inch  
 /10ths Merc. in \_\_\_\_\_ Inch  
 Volume \_\_\_\_\_ Cu. Ft.  
 Rock Pressure \_\_\_\_\_ lbs. \_\_\_\_\_ hrs.  
 Oil \_\_\_\_\_ bbls., 1st 24 hrs.  
 Fresh water \_\_\_\_\_ feet \_\_\_\_\_ feet  
 Salt water \_\_\_\_\_ feet \_\_\_\_\_ feet

Casing and Tubing	Used in Drilling	Left in Well	Packers
Size			Kind of Packer
16			
13			
10	400		Size of
8 1/4	860		
6 5/8	1575		Depth set
5 3/16			
3			Perf. top
2			Perf. bottom
Liners Used			Perf. top
			Perf. bottom

CASING CEMENTED \_\_\_\_\_ SIZE \_\_\_\_\_ No. Ft. \_\_\_\_\_ Date \_\_\_\_\_

COAL WAS ENCOUNTERED AT \_\_\_\_\_ FEET \_\_\_\_\_ INCHES  
 \_\_\_\_\_ FEET \_\_\_\_\_ INCHES \_\_\_\_\_ FEET \_\_\_\_\_ INCHES  
 \_\_\_\_\_ FEET \_\_\_\_\_ INCHES \_\_\_\_\_ FEET \_\_\_\_\_ INCHES

Formation	Color	Hard or Soft	Top	Bottom	Oil, Gas or Water	Depth Found	Remarks
<b>First Pay</b>			1650'				
<b>Total Depth</b>			1665'				

