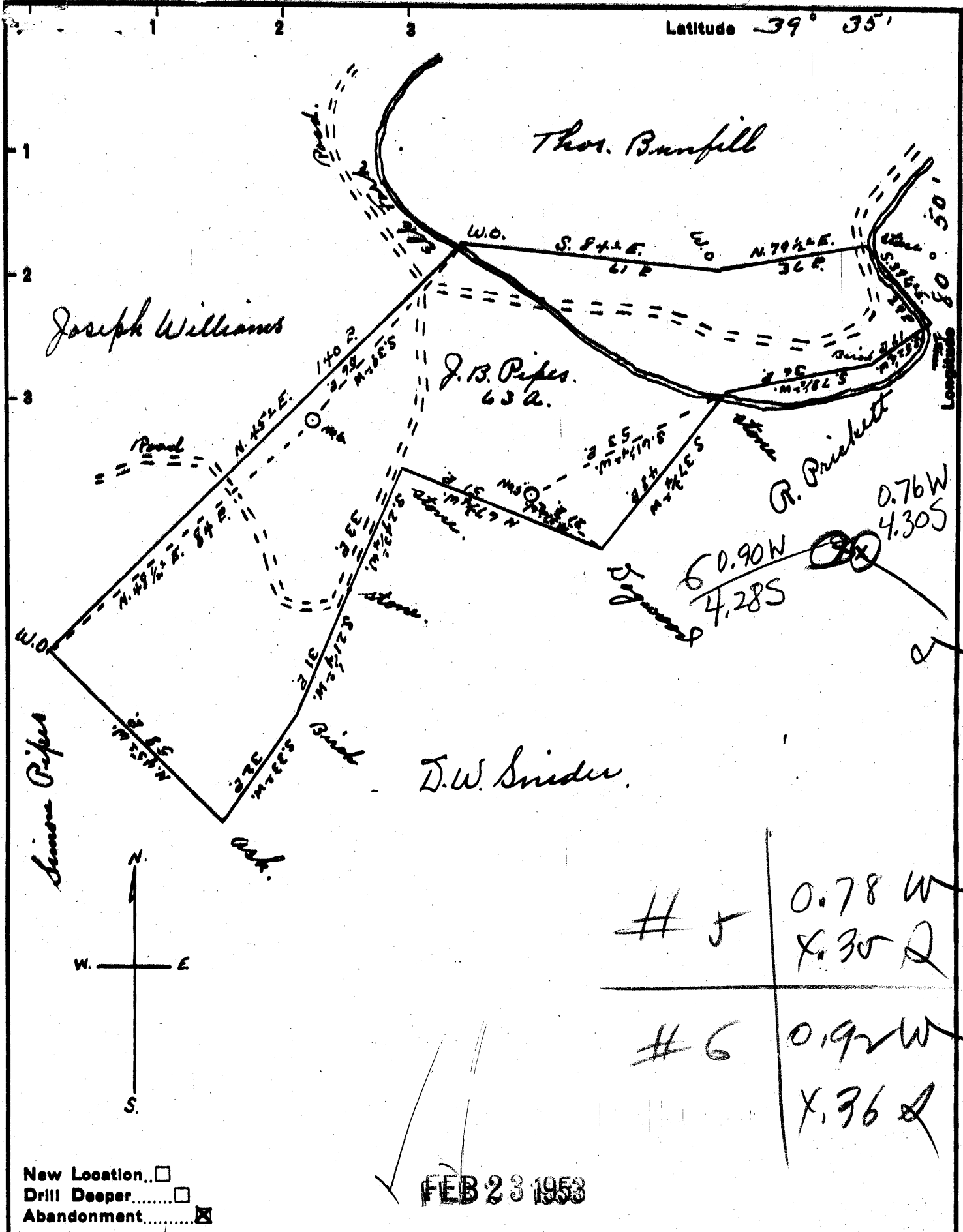


Latitude 39° 35'



New Location...   
 Drill Deeper.....   
 Abandonment.....

FEB 23 1953

# 5      0.78 W  
             X.30 Q

---

# 6      0.92 W  
             X.36 Q

Company Reno Oil Company  
 Address Sistersville W. Va.  
 Farm J. B. Pipes  
 Tract \_\_\_\_\_ Acres 63 Lease No. \_\_\_\_\_  
 Well (Farm) No. 576 Serial No. \_\_\_\_\_  
 Elevation (Spirit Level) No. 5716 No. 6 980  
 Quadrangle New Martinsville  
 County Tyler District Edlworth  
 Engineer Robert R. Anderson  
 By Geo Triplett, Surveyor  
 Engineer's Registration No. 296  
 File No. \_\_\_\_\_ Drawing No. \_\_\_\_\_  
 Date Nov. 7, 1952 Scale 1" = 30 P.

STATE OF WEST VIRGINIA  
 DEPARTMENT OF MINES  
 OIL AND GAS DIVISION  
 CHARLESTON

**WELL LOCATION MAP**  
 FILE NO. JYL-819-A-#5  
JYL-820-A-#6

+ Denotes location of well on United States Topographic Maps, scale 1 to 62,500, latitude and longitude lines being represented by border lines as shown.

- Denotes one inch spaces on border line of original tracing.

STATE OF WEST VIRGINIA  
DEPARTMENT OF MINES  
OIL AND GAS DIVISION

714

WELL RECORD

Permit No. 800-A

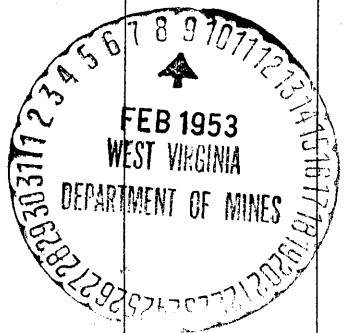
Oil or Gas Well Oil  
(Kind)

Company Reno Oil Company,  
 Address Sistersville, W. Va. 62  
 Farm J. B. Pipes Acres  
 Location (waters) \_\_\_\_\_  
 Well No. Six Elev. 980  
 District Ellsworth County Tyler  
 The surface of tract is owned in fee by Pipes Heirs  
 Address \_\_\_\_\_  
 Mineral rights are owned by \_\_\_\_\_  
 Address \_\_\_\_\_  
 Drilling commenced \_\_\_\_\_  
 Drilling completed \_\_\_\_\_  
 Date shot \_\_\_\_\_ Depth of shot \_\_\_\_\_  
 Open Flow /10ths Water in \_\_\_\_\_ Inch  
 /10ths Merc. in \_\_\_\_\_ Inch  
 Volume \_\_\_\_\_ Cu. Ft.  
 Rock Pressure \_\_\_\_\_ lbs. \_\_\_\_\_ hrs.  
 Oil \_\_\_\_\_ bbls., 1st 24 hrs.  
 Fresh water \_\_\_\_\_ feet \_\_\_\_\_ feet  
 Salt water \_\_\_\_\_ feet \_\_\_\_\_ feet

Casing and Tubing	Used in Drilling	Left in Well	Packers
Size			
16			Kind of Packer
13			
10			Size of
8 1/4	990		
6 3/8	1,760		Depth set
5 3/16			
3			Perf. top
2			Perf. bottom
Liners Used			Perf. top
			Perf. bottom

CASING CEMENTED \_\_\_\_\_ SIZE \_\_\_\_\_ No. Ft. \_\_\_\_\_ Date \_\_\_\_\_  
 COAL WAS ENCOUNTERED AT \_\_\_\_\_ FEET \_\_\_\_\_ INCHES  
 \_\_\_\_\_ FEET \_\_\_\_\_ INCHES \_\_\_\_\_ FEET \_\_\_\_\_ INCHES  
 \_\_\_\_\_ FEET \_\_\_\_\_ INCHES \_\_\_\_\_ FEET \_\_\_\_\_ INCHES

Formation	Color	Hard or Soft	Top	Bottom	Oil, Gas or Water	Depth Found	Remarks
1st Cow Run			960				
Salt Sand			1020				
Lime Stone			1750				
Big Injun Sand			1823				
First Pay			1828				
Total Depth			1838				



Formation	Color	Hard or Soft	Top	Bottom	Oil, Gas or Water	Depth Found	Remarks

Date February 7th, 19 53

APPROVED RENO OIL COMPANY, Owner

By Arthur Davis  
(Title)

Asst. Treas.