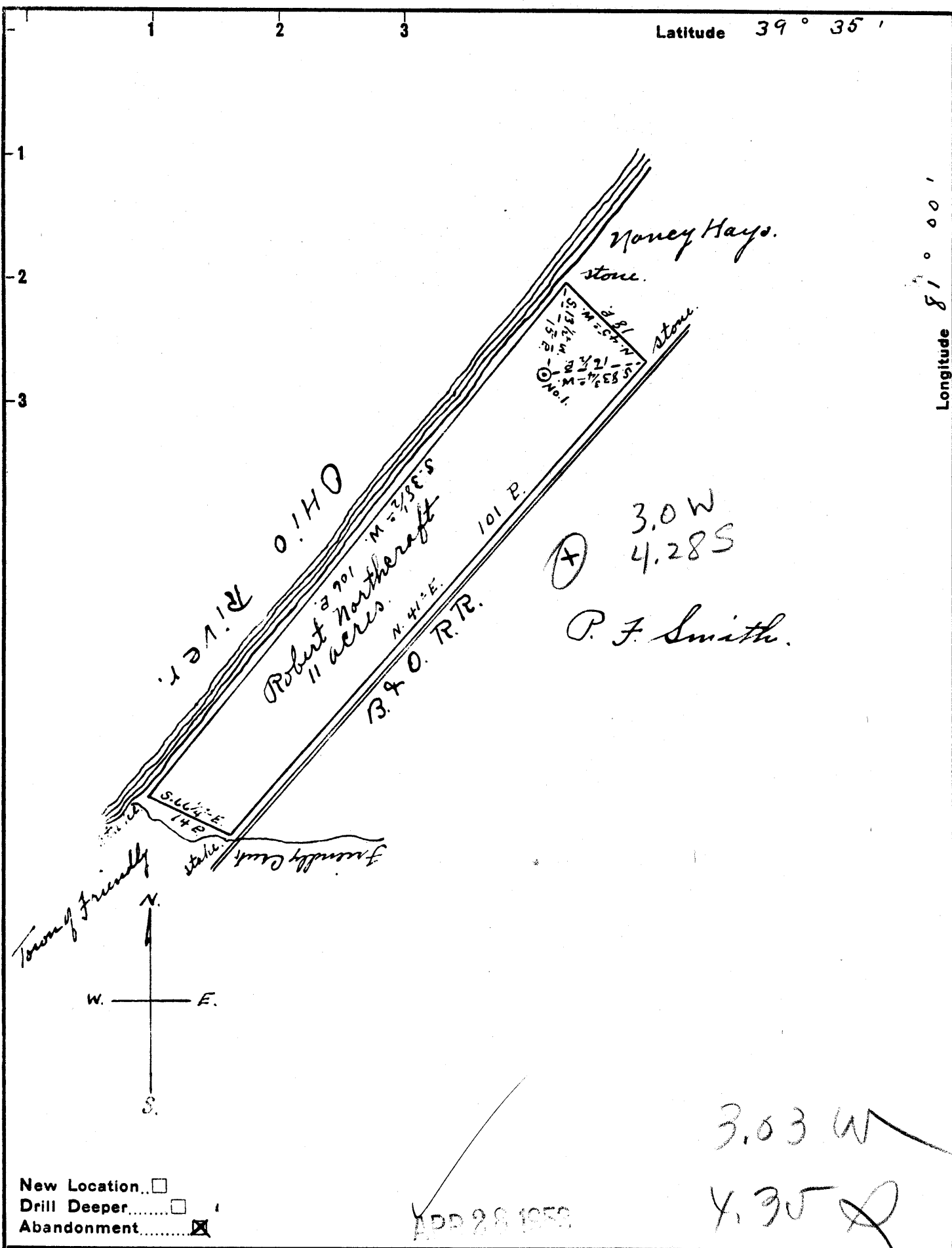


Latitude 39° 35'

Longitude 81° 00'



STATE OF WEST VIRGINIA
DEPARTMENT OF MINES
OIL AND GAS DIVISION
CHARLESTON

WELL LOCATION MAP
FILE NO. JYL-827-A

+ Denotes location of well on United States Topographic Maps, scale 1 to 62,500, latitude and longitude lines being represented by border lines as shown.

- Denotes one inch spaces on border line of original tracing.

Company Robert Northcraft
 Address Friendly W.Va.
 Farm Robert Northcraft
 Tract _____ Acres 11 Lease No. _____
 Well (Farm) No. 1 Serial No. _____
 Elevation (Spirit Level) 640'
 Quadrangle New Martins
 County Filer District Union
 Engineer Robert R. Anderson
 By Imp. District Surveyor
 Engineer's Registration No. 296
 File No. _____ Drawing No. _____
 Date 26, 1952 Scale 1" = 20 P.