

0 1 2 3

LATITUDE 39 0 30 1

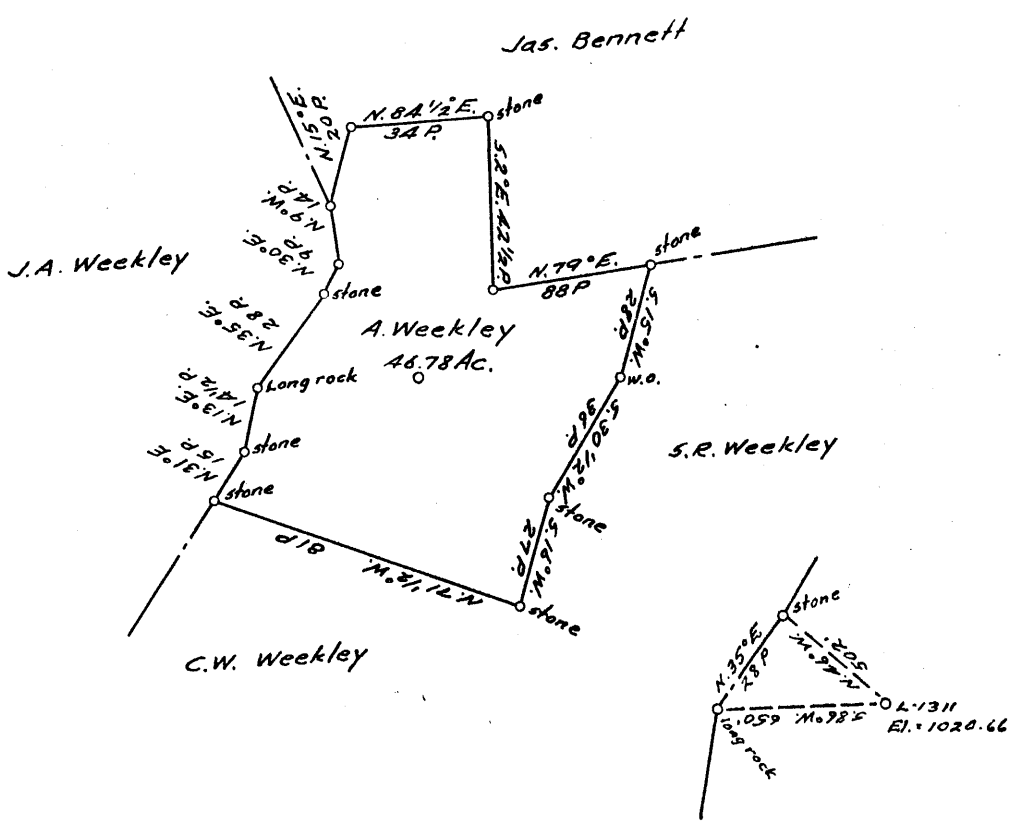
(+) 2.80 W
0.44 S

-1

-2

-3

LONGITUDE 80 0 45



COAL OWNED BY _____

NEW LOCATION.....

DRILL DEEPER.....

ABANDONMENT.....

NOV 7 1955

2.80 W
0.44 S

COMPANY The Manufacturers Light & Heat Co.

ADDRESS 800 Union Trust Bldg. Pgh. Pa.

FARM Armstrong Weekley

TRACT _____ ACRES 48 LEASE NO. 294A

WELL (FARM) NO. 1 SERIAL NO. 1311

ELEVATION (SPIRIT LEVEL) 1020.66'

QUADRANGLE West Union

COUNTY Tyler DISTRICT Ellsworth

ENGINEER Robert M. Heed

ENGINEER'S REGISTRATION NO. 361-F

FILE NO. _____ DRAWING NO. Y-15-26A

DATE 29 June 1955 SCALE 1" = 800'

STATE OF WEST VIRGINIA
DEPARTMENT OF MINES
OIL AND GAS DIVISION
CHARLESTON

WELL LOCATION MAP

FILE NO. JYL-861-A

+ DENOTES LOCATION OF WELL ON UNITED STATES TOPOGRAPHIC MAPS. SCALE 1 TO 62,500. LATITUDE AND LONGITUDE LINES BEING REPRESENTED BY BORDER LINES AS SHOWN.

- DENOTES ONE INCH SPACES ON BORDER LINE OF ORIGINAL TRACING.

ARMSTRONG WEEKLEY No. 1 (1311) - M, L. & H. Co. - TYL-861-A



766

STATE OF WEST VIRGINIA
DEPARTMENT OF MINES
OIL AND GAS DIVISION

Quadrangle West Union
Permit No. 851-A

WELL RECORD

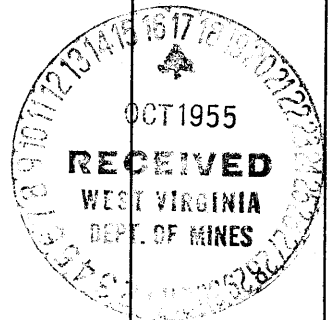
Oil or Gas Well Gas
(KIND)

Company THE MANUFACTURERS LIGHT AND HEAT COMPANY
Address 800 Union Trust Bldg., Pgh., Penna.
Farm A. Weekley Acres 48
Location (waters) _____
Well No. 1311 Elev. 1020.66'
District Tyler County Ellsworth
The surface of tract is owned in fee by _____
Address _____
Mineral rights are owned by _____
Address _____
Drilling commenced May 30, 1907
Drilling completed July 1, 1907
Date Shot _____ From _____ To _____
With _____
Open Flow _____ /10ths Water in _____ Inch
_____ /10ths Merc. in _____ Inch
Volume _____ Cu. Ft.
Rock Pressure _____ lbs. _____ hrs.
Oil _____ bbls., 1st 24 hrs.
Fresh water _____ feet _____ feet
Salt water _____ feet _____ feet

Casing and Tubing	Used in Drilling	Left in Well	Packers
Size			
16			Kind of Packer
13			
10	120	120	Size of
8 1/4	1125	1125	
6 5/8	1505	1505	Depth set
5 3/16			
3			Perf. top
2			Perf. bottom
Liners Used			Perf. top
			Perf. bottom

CASING CEMENTED _____ SIZE _____ No. Ft. _____ Date _____
COAL WAS ENCOUNTERED AT 235 FEET _____ INCHES
680 FEET _____ INCHES FEET _____ INCHES
_____ FEET _____ INCHES FEET _____ INCHES

Formation	Color	Hard or Soft	Top	Bottom	Oil, Gas or Water	Depth Found	Remarks
Native Coal			235				
Pittsburgh Coal			680				
Little Dunkard			1143	1173			
Big Dunkard			1217	1242			
Gas Sand			1322	1386			
Salt			1426	1700			
Maxon			1778	1808			
Little Lime			1865	1875			
Pencil Cave			1875	1879			
Big Lime			1879	1956			
Big Injun			1956		Gas at 1985		
Total Depth			2057				
DRILLED DEEPER							
Completed October 23, 1907							
Left in Well --- 5-3/16" casing --2077'							
Packer 3" 1st. min 280 Rock Pressure 680							
Big Injun			2176				
Gordon			2748	Gas 2760			
Total Depth			2797				



(Over)

OCT. 26 1905

