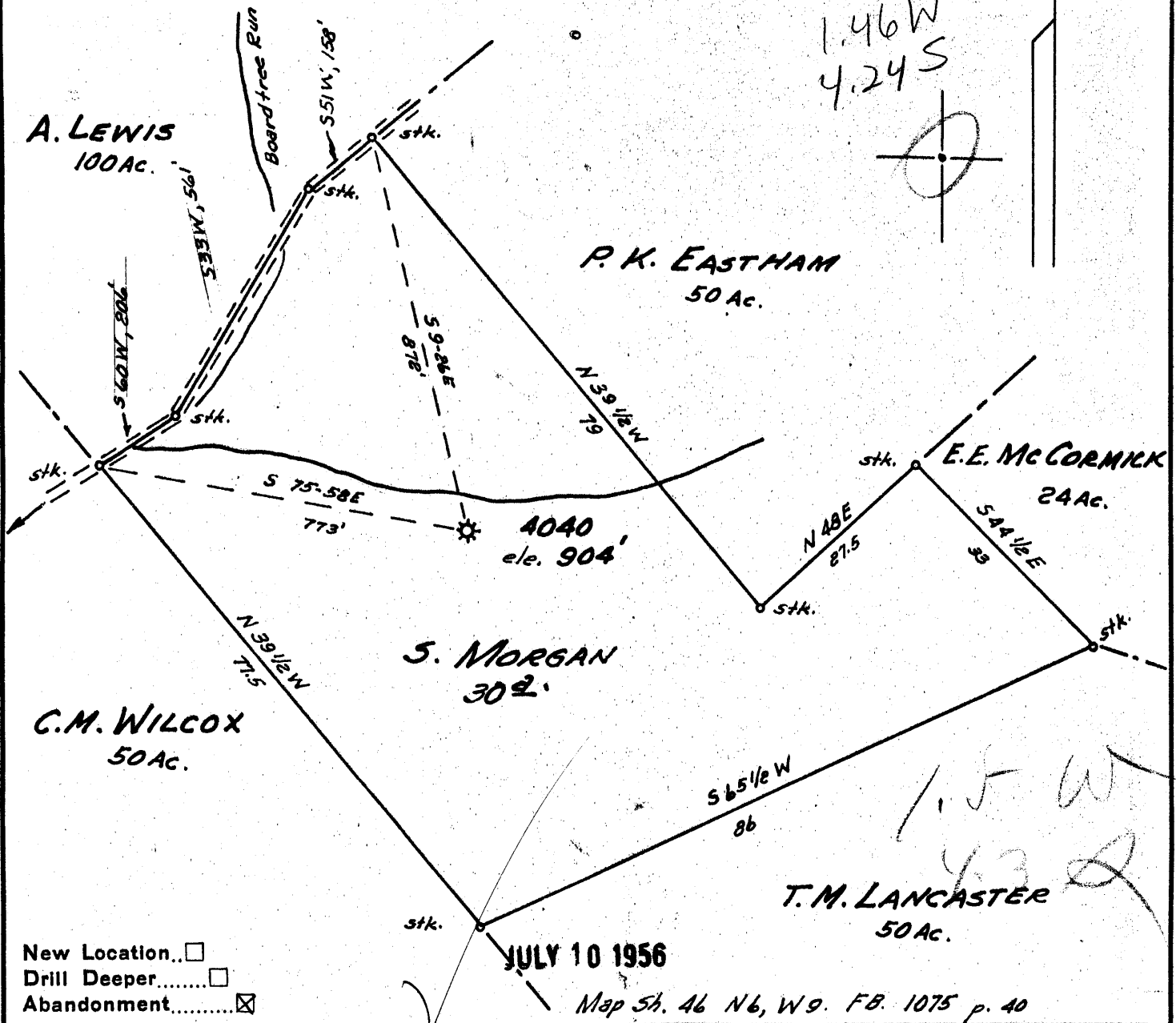


Latitude 39° 35'

39° 32' 30"

Longitude 80° 45' (7 1/2 + 15')



Company CECIL CHISLER & SON  
 Address ROUTE 2 FAIRVIEW, W.VA.  
 Farm S. MORGAN / Alfred Lewis  
 Tract \_\_\_\_\_ Acres 30. Lease No. 24397  
 Well (Farm) No. \_\_\_\_\_ Serial No. 4040  
 Elevation (Spirit Level) 904'  
 Quadrangle NEW MARTINSVILLE  
 County TYLER District ELLSWORTH  
 Engineer Guy H. Bradley  
 Engineer's Registration No. 2425  
 File No. \_\_\_\_\_ Drawing No. \_\_\_\_\_  
 Date JUNE 20, 1956 Scale 1" = 200'

STATE OF WEST VIRGINIA  
 DEPARTMENT OF MINES  
 OIL AND GAS DIVISION  
 CHARLESTON

**WELL LOCATION MAP**  
 FILE NO. JYL-871-A  
 was 70518

+ Denotes location of well on United States Topographic Maps, scale 1 to 62,500, latitude and longitude lines being represented by border lines as shown.

- Denotes one inch spaces on border line of original tracing.

S. MORGAN No. 4040 - CECIL CHISLER & SON - TYL-871-A



704

STATE OF WEST VIRGINIA  
DEPARTMENT OF MINES  
OIL AND GAS DIVISION

Quadrangle New Martinsville

WELL RECORD

Permit No. 111-1

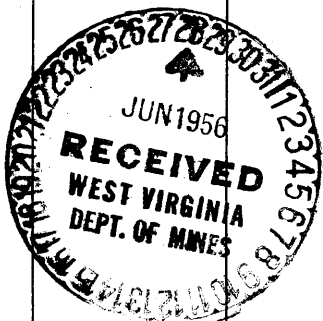
Oil or Gas Well Gas  
(KIND)

Company Cecil Chisler & Son  
 Address Rt. #2 Vairview, W. Va.  
 Farm S. Morgan Acres 30  
 Location (waters) \_\_\_\_\_  
 Well No. 4040 Elev. 904'  
 District Ellsworth County Tyler  
 The surface of tract is owned in fee by \_\_\_\_\_  
 Address \_\_\_\_\_  
 Mineral rights are owned by \_\_\_\_\_  
 Address \_\_\_\_\_  
 Drilling commenced April 17, 1916  
 Drilling completed May 18, 1916  
 Date Shot Not shot From \_\_\_\_\_ To \_\_\_\_\_  
 With \_\_\_\_\_  
 Open Flow /10ths Water in \_\_\_\_\_ Inch  
 /10ths Merc. in \_\_\_\_\_ Inch  
 Volume exhausted Cu. Ft.  
 Rock Pressure \_\_\_\_\_ lbs. \_\_\_\_\_ hrs.  
 Oil None bbls., 1st 24 hrs.  
 Fresh water 720 feet \_\_\_\_\_ feet  
 Salt water 1582' feet \_\_\_\_\_ feet

Casing and Tubing	Used in Drilling	Left in Well	Packers
Size			Kind of Packer
16			
13			
10	<b>333</b>	<b>333</b>	Size of
8 1/4	<b>1088</b>	<b>1088</b>	
6 1/2	<b>1770</b>	<b>1770</b>	Depth set
5 3/16			
3			Perf. top
2			Perf. bottom
Liners Used			Perf. top
			Perf. bottom

CASING CEMENTED \_\_\_\_\_ SIZE \_\_\_\_\_ No. Ft. \_\_\_\_\_ Date \_\_\_\_\_  
**No cementing done**  
 COAL WAS ENCOUNTERED AT 330 FEET No record INCHES  
 \_\_\_\_\_ FEET \_\_\_\_\_ INCHES FEET \_\_\_\_\_ INCHES  
 \_\_\_\_\_ FEET \_\_\_\_\_ INCHES FEET \_\_\_\_\_ INCHES

Formation	Color	Hard or Soft	Top	Bottom	Oil, Gas or Water	Depth Found	Remarks
Coal			<b>None</b>	<b>None</b>	<b>Water</b>	<b>720'</b>	
Little Dunkard			1050	1068			
Big Dunkard			1078	1164			
Gas Sand			1200	1230			
First Salt			1482	1547			
2nd Salt			1550	1620	<b>Water</b>	<b>1582</b>	
Little Lime			1716	1741			
Pencil Cave			1741	1746			
BIG LIME			1746	1809			
BIG INJUN			1809	1857	<b>Gas</b>	<b>1820'</b>	
<b>Total Depth</b>				<b>1857'</b>			



OCT 26 1956

Formation	Color	Hard or Soft	Top	Bottom	Oil, Gas or Water	Depth Found	Remarks

Date June 26, \_\_\_\_\_, 19 56

APPROVED Cecil Chisler & Son, Owner

By Robert Chisler  
(Title)

Part of ...

Ellsworth District, Tyler County, W. Va.  
Hope Natural Gas Co.  
10 bbls. in Big Injun Sand; original.  
Present, 60 lbs. Rock in Gordon.  
On Boardtree Run.  
Shown on 8-I, New Martinsville Quadrangle.

70518

...