

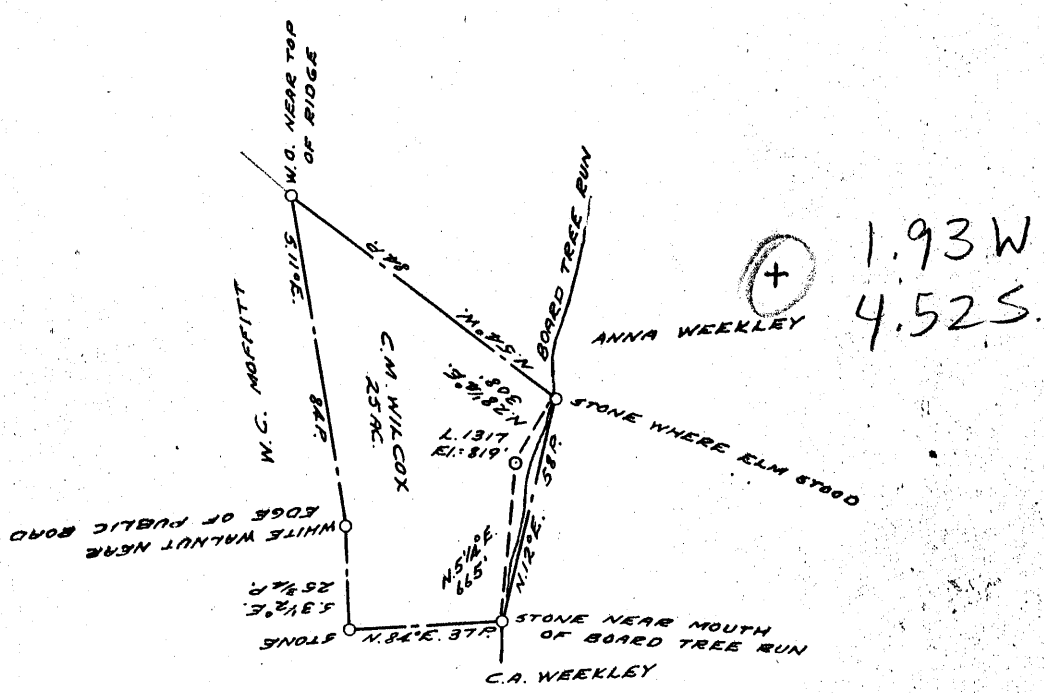
0 1 2 3 LATITUDE 7 0 35 1

-1

-2

-3

LONGITUDE 80 0 45



COAL OWNED BY \_\_\_\_\_

NEW LOCATION...

DRILL DEEPER...

ABANDONMENT...

AUG 13 1956

1.93 W  
4.62

COMPANY THE MANUFACTURERS LIGHT & HEAT CO

ADDRESS 800 UNION TRUST BLDG. PCH. PENNA.

FARM C.M. WILCOX

TRACT \_\_\_\_\_ ACRES 25 LEASE No. 2923

WELL (FARM) No. 1 SERIAL No. 1317

ELEVATION (SPIRIT LEVEL) 819'

QUADRANGLE NEW MARTINSVILLE

COUNTY TYLER DISTRICT ELLSWORTH

ENGINEER Thomas E. Virgin - J.M.

ENGINEER'S REGISTRATION No. 1503

FILE No. \_\_\_\_\_ DRAWING No. Y-15-332

DATE 2 MAR 1956 SCALE 1" = 800'

STATE OF WEST VIRGINIA  
DEPARTMENT OF MINES  
OIL AND GAS DIVISION  
CHARLESTON

**WELL LOCATION MAP**

FILE No. JYL-874-A

+ DENOTES LOCATION OF WELL ON UNITED STATES TOPOGRAPHIC MAPS, SCALE 1 TO 62,500, LATITUDE AND LONGITUDE LINES BEING REPRESENTED BY BORDER LINES AS SHOWN.

- DENOTES ONE INCH SPACES ON BORDER LINE OF ORIGINAL TRACING.

C.M. WILCOX No. 1 (1317) - M.L. & H. Co. - JYL 874-A



STATE OF WEST VIRGINIA  
DEPARTMENT OF MINES  
OIL AND GAS DIVISION

711

Quadrangle New Martinsville

WELL RECORD

Permit No. 874A

Oil or Gas Well Gas  
(KIND)

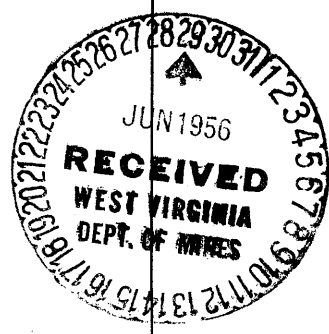
Company THE MANUFACTURERS LIGHT AND HEAT COMPANY  
 Address 800 UNION TRUST BUILDING, PGH., 19, PA.  
 Farm C. M. Wilcox Acres 25  
 Location (waters) 1317 (1) Elev. 819'  
 Well No. 1317 Elev. 819'  
 District Ellsworth County Tyler  
 The surface of tract is owned in fee by \_\_\_\_\_  
 Address \_\_\_\_\_  
 Mineral rights are owned by \_\_\_\_\_  
 Address \_\_\_\_\_  
 Drilling commenced July 1, 1905  
 Drilling completed July 20, 1905  
 Date Shot \_\_\_\_\_ From \_\_\_\_\_ To \_\_\_\_\_  
 With \_\_\_\_\_  
 Open Flow \_\_\_\_\_ /10ths Water in \_\_\_\_\_ Inch  
 \_\_\_\_\_ /10ths Merc. in \_\_\_\_\_ Inch  
 Volume \_\_\_\_\_ Cu. Ft.  
 Rock Pressure \_\_\_\_\_ lbs. \_\_\_\_\_ hrs.  
 Oil \_\_\_\_\_ bbls., 1st 24 hrs.  
 Fresh water \_\_\_\_\_ feet \_\_\_\_\_ feet  
 Salt water \_\_\_\_\_ feet \_\_\_\_\_ feet

Casing and Tubing	Used in Drilling	Left in Well	Packers
Size			
16			Kind of Packer _____
13			
10			Size of _____
8 1/4			
6 5/8	<u>2005'</u>	<u>2005'</u>	Depth set _____
5 3/16			
3			Perf. top _____
2			Perf. bottom _____
Liners Used			Perf. top _____
			Perf. bottom _____

CASING CEMENTED \_\_\_\_\_ SIZE \_\_\_\_\_ No. Ft. \_\_\_\_\_ Date \_\_\_\_\_  
 COAL WAS ENCOUNTERED AT \_\_\_\_\_ FEET \_\_\_\_\_ INCHES  
 \_\_\_\_\_ FEET \_\_\_\_\_ INCHES FEET \_\_\_\_\_ INCHES  
 \_\_\_\_\_ FEET \_\_\_\_\_ INCHES FEET \_\_\_\_\_ INCHES

Formation	Color	Hard or Soft	Top	Bottom	Oil, Gas or Water	Depth Found	Remarks
Commenced drilling at Gorden Sand			1867				
Gas in Gorden Sand			2570	2596	Drilled to Big Injun Sand by The Chester Oil Company		
2nd paying gas in gorden sand			2583		Contractor Cappan Bros. commenced drilling Nov. 2, 1899 completed Dec. 7, 1898		
Finished			2591				
			2596				
					Harvey & McNaught commenced cleaning out June 15, 1905		
					Finished June 30, 1905		

(Handwritten mark)



MAR 28 1957

