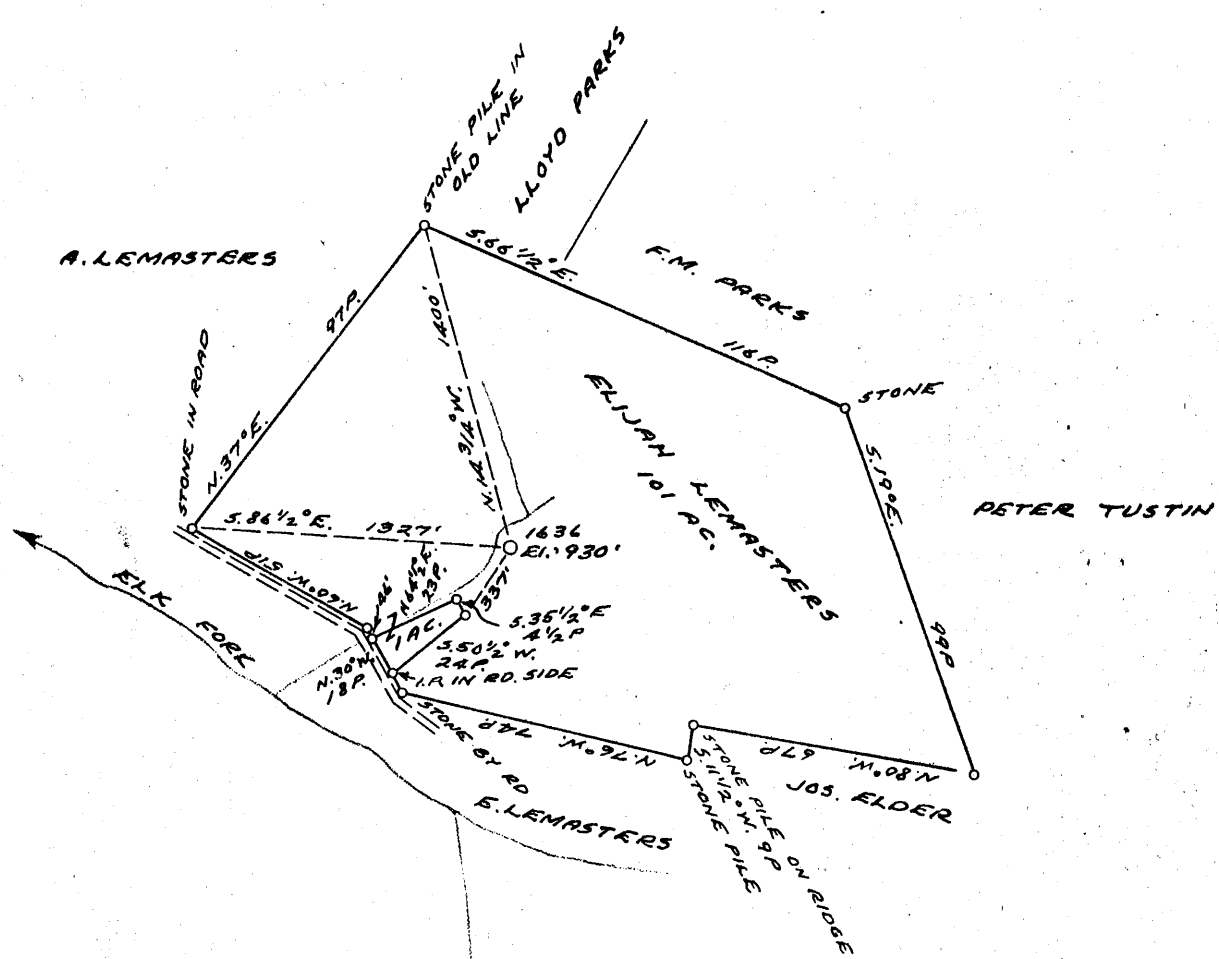


LATITUDE 0 30 1  
 LONGITUDE 80 40

4.22 W  
 0.56 S



COAL OWNED BY \_\_\_\_\_

NEW LOCATION.....  
 DRILL DEEPER.....  
 ABANDONMENT.....

AUG. 27 1956

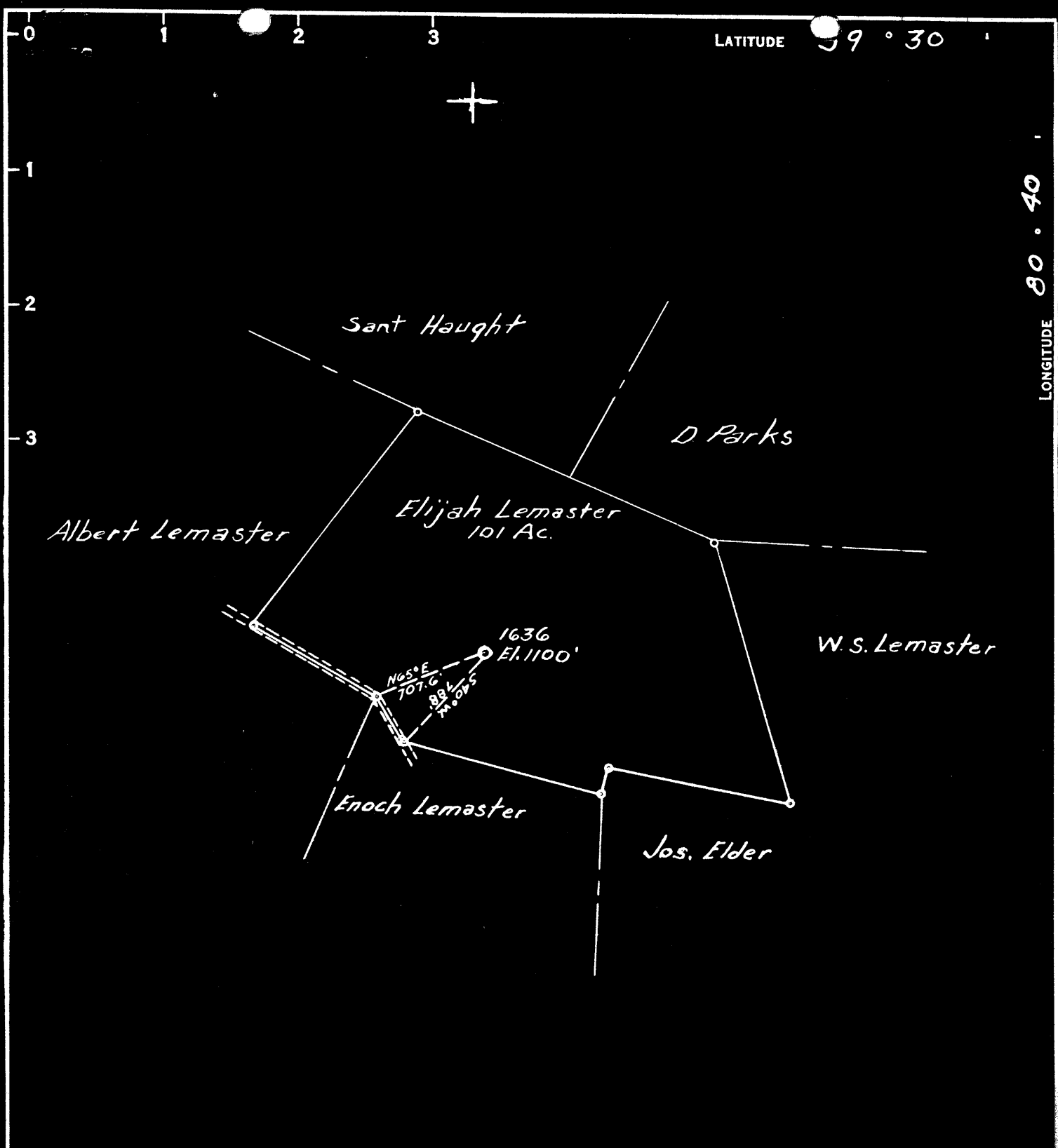
4.22 W  
 0.56 S

COMPANY THE MANUFACTURERS LIGHT & HEAT  
 ADDRESS 800 UNION TRUST BLDG. P6H RA.  
 FARM E. LEMASTERS  
 TRACT \_\_\_\_\_ ACRES 101 LEASE No. 2639  
 WELL (FARM) No. 1 SERIAL No. 1636  
 ELEVATION (SPIRIT LEVEL) 930'  
 QUADRANGLE CENTERPOINT  
 COUNTY TYLER DISTRICT ELLSWORTH  
 ENGINEER Thomas E. Virgin J.M.  
 ENGINEER'S REGISTRATION No. 1503  
 FILE No. \_\_\_\_\_ DRAWING No. Y-15-426  
 DATE 18 JULY 1956 SCALE 1" = 800'

STATE OF WEST VIRGINIA  
 DEPARTMENT OF MINES  
 OIL AND GAS DIVISION  
 CHARLESTON

WELL LOCATION MAP  
 FILE No. JYL-875-A

+ DENOTES LOCATION OF WELL ON UNITED STATES TOPOGRAPHIC MAPS. SCALE 1 TO 62,500. LATITUDE AND LONGITUDE LINES BEING REPRESENTED BY BORDER LINES AS SHOWN.  
 - DENOTES ONE INCH SPACES ON BORDER LINE OF ORIGINAL TRACING.



H.L. Lemasters 4116 W 48th St Cleveland, Ohio.  
 E.S. Lemasters P.O. Box 1089 Elkins W. Va.

COAL OWNED BY T.M. Lemasters Link W. Va.  
 Luther Winland, Sistersville W. Va.

NEW LOCATION.....  
 DRILL DEEPER.....  
 ABANDONMENT.....

S 2001  
 W 431

COMPANY The Manufacturers Light & Heat Co.  
 ADDRESS 800 Union Trust Bldg Pittsburgh Pa  
 FARM Elijah Lemaster  
 TRACT \_\_\_\_\_ ACRES 101 LEASE No. 2639  
 WELL (FARM) No. 1 SERIAL No. 1636  
 ELEVATION (SPIRIT LEVEL) 1100'  
 QUADRANGLE Centerpoint  
 COUNTY Tyler DISTRICT Ellsworth  
 ENGINEER John A. Landa  
 ENGINEER'S REGISTRATION No. \_\_\_\_\_  
 FILE No. \_\_\_\_\_ DRAWING No. Y-13-370  
 DATE 3-27-50 SCALE 1"=800'

STATE OF WEST VIRGINIA  
 DEPARTMENT OF MINES  
 OIL AND GAS DIVISION  
 CHARLESTON

**WELL LOCATION MAP**

FILE No. JYL-613-A

+ DENOTES LOCATION OF WELL ON UNITED STATES TOPOGRAPHIC MAPS. SCALE 1 TO 62,500. LATITUDE AND LONGITUDE LINES BEING REPRESENTED BY BORDER LINES AS SHOWN.  
 - DENOTES ONE INCH SPACES ON BORDER LINE OF ORIGINAL TRACING.



STATE OF WEST VIRGINIA  
DEPARTMENT OF MINES  
OIL AND GAS DIVISION

762

Quadrangle \_\_\_\_\_  
Permit No. \_\_\_\_\_

WELL RECORD

Oil or Gas Well Gas  
(KIND)

Company THE MANUFACTURERS LIGHT & HEAT COMPANY  
Address 800 UNION TRUST BLDG., PGH., PA.  
Farm Elijah Lemasters Acres 101  
Location (waters) \_\_\_\_\_  
Well No. 1-1636 Elev. 930'  
District Ellsworth County Tyler  
The surface of tract is owned in fee by \_\_\_\_\_  
Address \_\_\_\_\_  
Mineral rights are owned by \_\_\_\_\_  
Address \_\_\_\_\_  
Drilling commenced October 4, 1913  
Drilling completed January 3, 1914  
Date Shot \_\_\_\_\_ From \_\_\_\_\_ To \_\_\_\_\_  
With \_\_\_\_\_  
Open Flow \_\_\_\_\_ /10ths Water in \_\_\_\_\_ Inch  
\_\_\_\_\_ /10ths Merc. in \_\_\_\_\_ Inch  
Volume \_\_\_\_\_ Cu. Ft.  
Rock Pressure \_\_\_\_\_ lbs. \_\_\_\_\_ hrs.  
Oil \_\_\_\_\_ bbls., 1st 24 hrs.  
Fresh water \_\_\_\_\_ feet \_\_\_\_\_ feet  
Salt water \_\_\_\_\_ feet \_\_\_\_\_ feet

Casing and Tubing	Used in Drilling	Left in Well	Packers
Size			
16			Kind of Packer _____
13			
10			Size of _____
8 1/4			
6 5/8	1999	1999	Depth set _____
5 3/16	2105	2105	
3			Perf. top _____
2			Perf. bottom _____
Liners Used			Perf. top _____
			Perf. bottom _____

CASING CEMENTED \_\_\_\_\_ SIZE \_\_\_\_\_ No. Ft. \_\_\_\_\_ Date \_\_\_\_\_

COAL WAS ENCOUNTERED AT 158 FEET \_\_\_\_\_ INCHES  
527 FEET \_\_\_\_\_ INCHES FEET \_\_\_\_\_ INCHES  
\_\_\_\_\_ FEET \_\_\_\_\_ INCHES FEET \_\_\_\_\_ INCHES

Formation	Color	Hard or Soft	Top	Bottom	Oil, Gas or Water	Depth Found	Remarks
Native Coal			158	163			
Pittsburgh Coal			527	529			
Little Dunkard			920	935			
Big Dunkard			964	967			
Gas Sand			1159	1175			
First Salt Sand			1220	1268			
Second			1295	1320			
Third			1443	1563			
Maxon			1660	1710			
Little Lime			1760	1792			
Pencil Cave			1792	1806			
Big Lime			1806	1855			
Big Injun			1855	2110			
Red Rock			2570	2580			
Gordon Sand			2682	2701			
Total				2704			



Shut in in 5 3/16" Cas.



OCT 26 1956

Formation	Color	Hard or Soft	Top	Bottom	Oil, Gas or Water	Depth Found	Remarks

Date MARCH 31, 1950

APPROVED THE MANUFACTURERS LIGHT & HEAT COMPANY, Owner

By *Paul Cooper* LAND AGENT.

*PKC*



STATE OF WEST VIRGINIA  
DEPARTMENT OF MINES  
OIL AND GAS DIVISION

556

WELL RECORD

Permit No. TYL-513-A

Oil or Gas Well  
(KIND)

Company The Manufacturers Light & Heat Company  
 Address 800 Union Trust Bldg., Pittsburgh, Pa.  
 Farm Elijah Lemasters Acres 101  
 Location (waters) \_\_\_\_\_  
 Well No. 1-1636 Elev. \_\_\_\_\_  
 District Ellsworth County Tyler  
 The surface of tract is owned in fee by E. S. Lemasters  
P. O. Box 1089 Address Elkins, W. Va.  
 Mineral rights are owned by The Mfrs. Light & Heat Co.  
800 Union Trust Bldg. Address Pittsburgh, Pa.  
 Drilling commenced October 4, 1913  
 Drilling completed January 3, 1914  
 Date Shot \_\_\_\_\_ From \_\_\_\_\_ To \_\_\_\_\_  
 With \_\_\_\_\_  
 Open Flow \_\_\_\_\_ /10ths Water in \_\_\_\_\_ Inch  
 \_\_\_\_\_ /10ths Merc. in \_\_\_\_\_ Inch  
 Volume \_\_\_\_\_ Cu. Ft.  
 Rock Pressure \_\_\_\_\_ lbs \_\_\_\_\_ hrs.  
 Oil \_\_\_\_\_ bbls., 1st 24 hrs.  
 Fresh water \_\_\_\_\_ feet \_\_\_\_\_ feet  
 Salt water \_\_\_\_\_ feet \_\_\_\_\_ feet

Casing and Tubing	Used in Drilling	Left in Well	Packers
Size			Kind of Packer
16			
13			
10	126		Size of
8 1/4	1069		
6 1/2	1999	1999	Depth set
5 3/16	2105	2105	
3			Perf. top
2			Perf. bottom
Liners Used			Perf. top
			Perf. bottom

CASING CEMENTED \_\_\_\_\_ SIZE \_\_\_\_\_ No. Ft. \_\_\_\_\_ Da \_\_\_\_\_

COAL WAS ENCOUNTERED AT 158 FEET 60 INCHES  
527 FEET 24 INCHES FEET INCHES  
 FEET INCHES FEET INCHES

Formation	Color	Hard or Soft	Top	Bottom	Oil, Gas or Water	Depth Found	Remarks
Native Coal			158	163			
Pittsburgh Coal			527	529			
Little Dunkard			920	935			
Big Dunkard			964	967			
Gas Sand			1159	1175			
First Salt Sand			1220	1268			
Second Salt Sand			1295	1320			
Third Salt Sand			1443	1563			
Maxon Sand			1660	1710			
Little Line			1760	1792			
Pencil Cave			1792	1806			
Big Line			1806	1855			
Big Injun			1855	2110			
Red Rock			2570	2580			
Gordon Sand			2682	2701			
TOTAL DEPTH				2704			Gas 2689 to 2698 1/2 4-5/10 Merc. in 2" opening.



Formation	Color	Hard or Soft	Top	Bottom	Oil, Gas or Water	Depth Found	Remarks

Date August 8, 19 56

APPROVED THE MANUFACTURERS LIGHT & HEAT CO., Owner

By Albert J. Matthea  
Assistant XEDUNO Land Agent

ELIJAH LEMASTERS NO. 1 (1636) WELL.

Ellsworth District, Tyler County, W. Va.

By The Manufacturers Light & Heat Co., 800 Union Trust Bldg.,  
Pittsburgh, Pa.

Abandoned under permit Tyl-.....-A?

On 101 acres.

Elevation, ..... ' L.

Surface owned by E. S. Lemasters, Box 1089, Elkins, W. Va., and  
minerals by The Manufacturers Light & Heat Co., 800 Union  
Trust Bldg., Pittsburgh, Pa.

Drilling commenced Oct. 4, 1913; completed Jan. 3, 1914.

10" casing, 126' (pulled); 8 $\frac{1}{4}$ " , 1069' (pulled); 6 $\frac{5}{8}$ " , 1999'; 5 $\frac{3}{16}$ " , 2105'.

Coal was encountered at 158-163 and 527-529'.

Gas well. Record to Dept. of Mines dated March 31, 1950.

Record to RCT from Mrs. Griffith Sept. 30, 1950. Old File No. 556.

	Top.	Bottom.
Native coal	158	- 163
Pittsburgh Coal	527	- 529
Little Dunkard Sand	920	- 935
Big Dunkard Sand	964	- 967
Gas Sand	1159	- 1175
First Salt Sand	1220	- 1268
Second Salt Sand	1295	- 1320
Third Salt Sand	1443	- 1563
Maxton Sand	1660	- 1710
Little Lime	1760	- 1792
Pencil Cave	1792	- 1806
Big Lime	1806	- 1855
Big Injun Sand	1855	- 2110
Red rock	2570	- 2580
Gordon Sand (gas, 2689-2698 $\frac{1}{2}$ '; 45/10 Merc. in 2" opening)	2682	- 2701
Total depth		2704

*~1045m*

E. LEMASTERS HEIRS NO. 1 WELL.

Gal. No. 278 (159)

*Elijah Lemasters*

*1634*

*70401* *now*  
*875 A*

Ellsworth District, Tyler County, W. Va.

Manufacturers Light & Heat Co.

Elevation, 892'.

Gas well.

On Elk Fork.

Shown on 9-A, West Union Quadrangle.

*Location on*  
*Center point 1/2'*