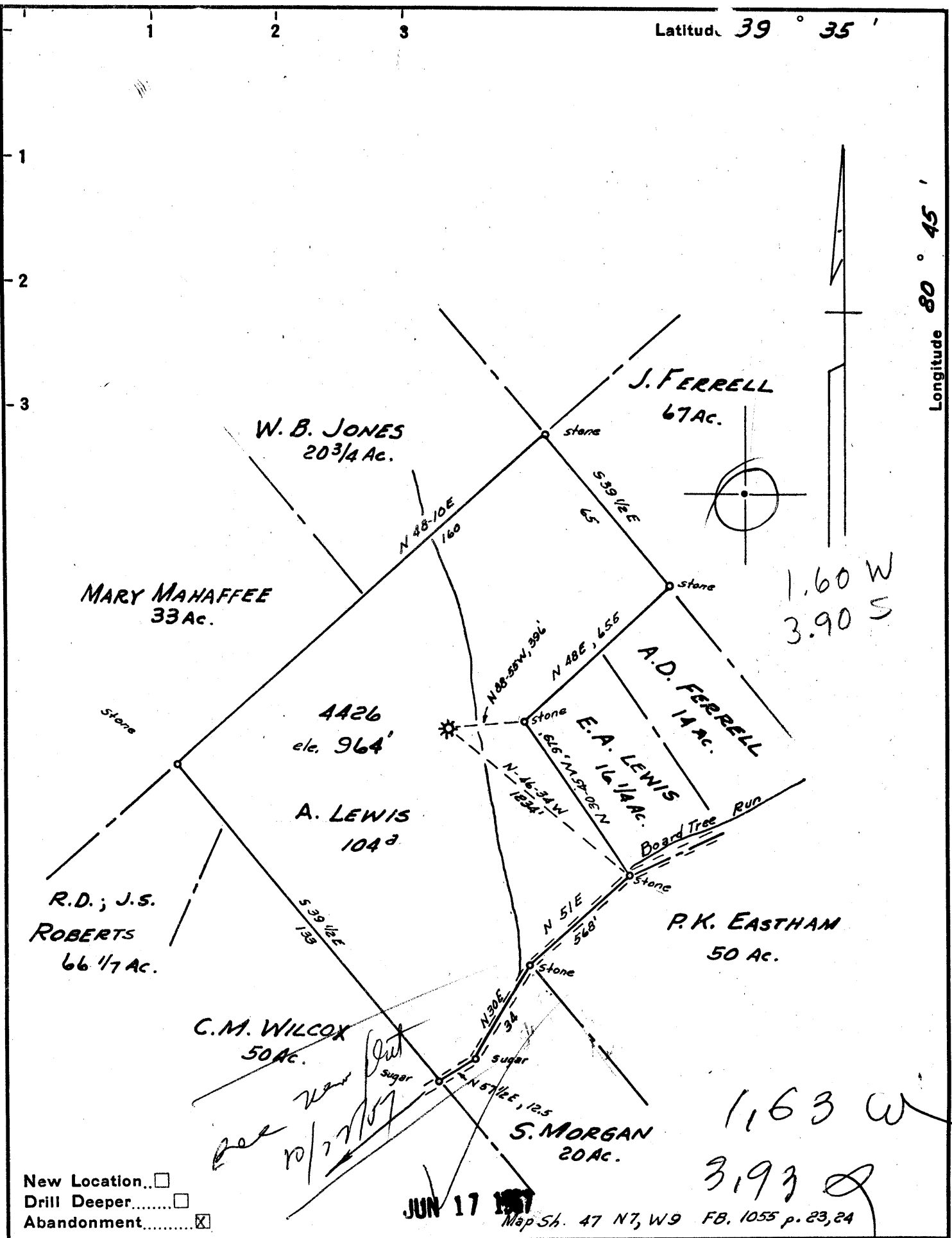


Latitude 39° 35'

Longitude 80° 45'



New Location...
 Drill Deeper...
 Abandonment...

JUN 17 1957

Map Sh. 47 N7, W9 FB. 1055 p. 23, 24

Company HOPE NATURAL GAS CO.
 Address C. LARKSBURG W. VA.
 Farm A. LEWIS
 Tract _____ Acres 104 Lease No. 26620
 Well (Farm) No. _____ Serial No. 4426
 Elevation (Spirit Level) _____ 964'
 Quadrangle NEW MARTINSVILLE
 County TYLER District ELLSWORTH
 Engineer Guy H. Bradley
 Engineer's Registration No. 2425
 File No. _____ Drawing No. _____
 Date MAY 23, 1957 Scale 1" = 40p.

STATE OF WEST VIRGINIA
 DEPARTMENT OF MINES
 OIL AND GAS DIVISION
 CHARLESTON

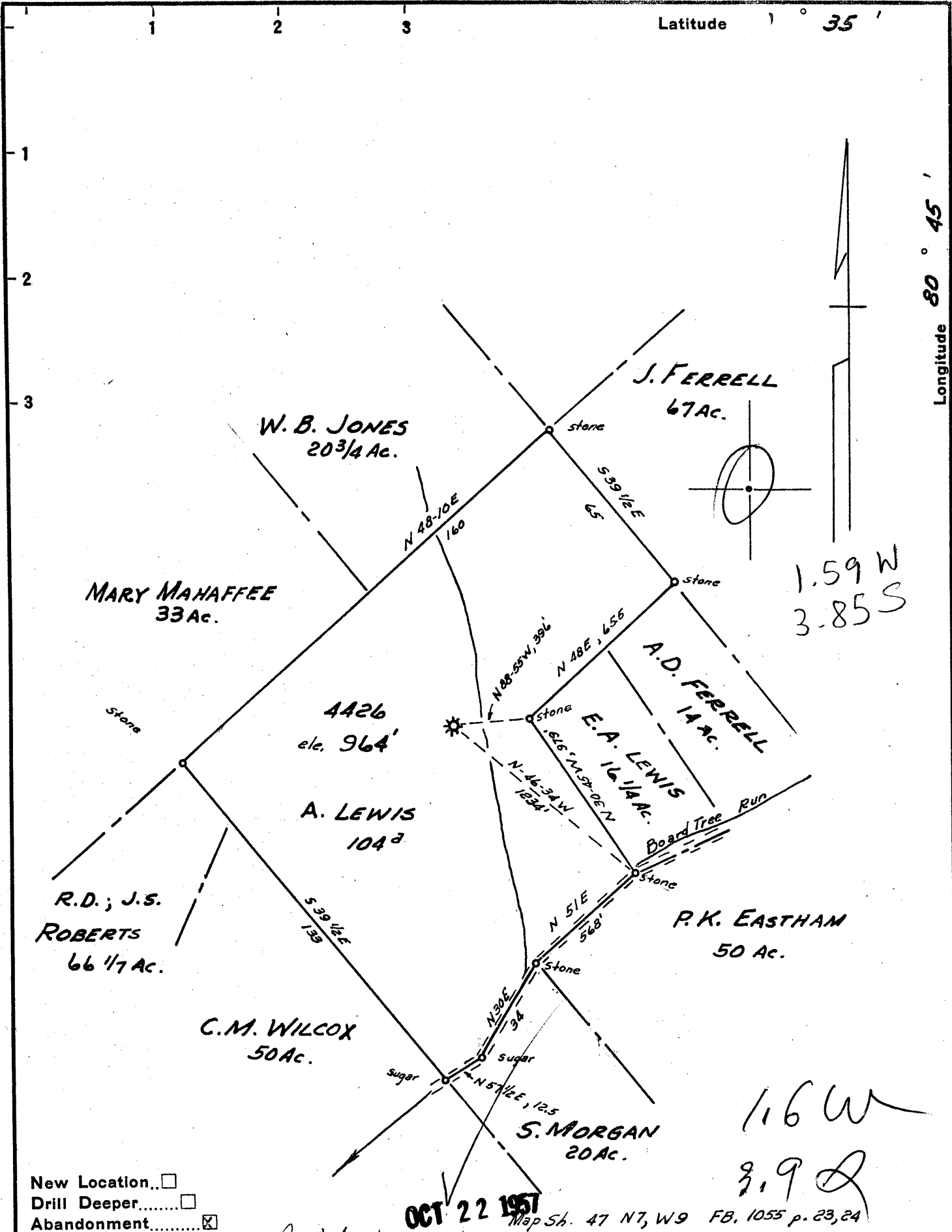
WELL LOCATION MAP
 FILE NO. JYL-882-A

+ Denotes location of well on United States Topographic Maps, scale 1 to 62,500, latitude and longitude lines being represented by border lines as shown.

- Denotes one inch spaces on border line of original tracing.

Latitude 35°

Longitude 80° 45'



New Location...
 Drill Deeper.....
 Abandonment.....

OCT 22 1957

Map Sh. 47 N7, W9 FB. 1055 p. 23, 24

Company HOPE NATURAL GAS CO.
 Address C. LARKSBURG W. VA.
 Farm A. LEWIS
 Tract _____ Acres 104 Lease No. 26620
 Well (Farm) No. _____ Serial No. 4426
 Elevation (Spirit Level) 964'
 Quadrangle NEW MARTINSVILLE
 County TYLER District ELLSWORTH
 Engineer Guy H. Bradley
 Engineer's Registration No. 2425
 File No. _____ Drawing No. _____
 Date MAY 23, 1957 Scale 1" = 40p.

STATE OF WEST VIRGINIA
 DEPARTMENT OF MINES
 OIL AND GAS DIVISION
 CHARLESTON

WELL LOCATION MAP
 FILE NO. JYL-882-A
 NOW: A.M. SNIDER - HUNDRED, W. VA.

+ Denotes location of well on United States Topographic Maps, scale 1 to 62,500, latitude and longitude lines being represented by border lines as shown.

- Denotes one inch spaces on border line of original tracing.

A. LEWIS No. 4426 — A. M. SNIDER (Hope N.G.Co. Well) — TYL-882-A