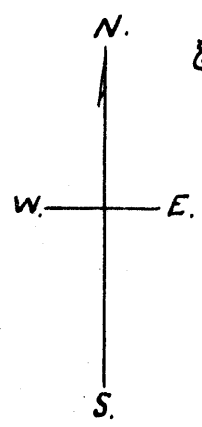
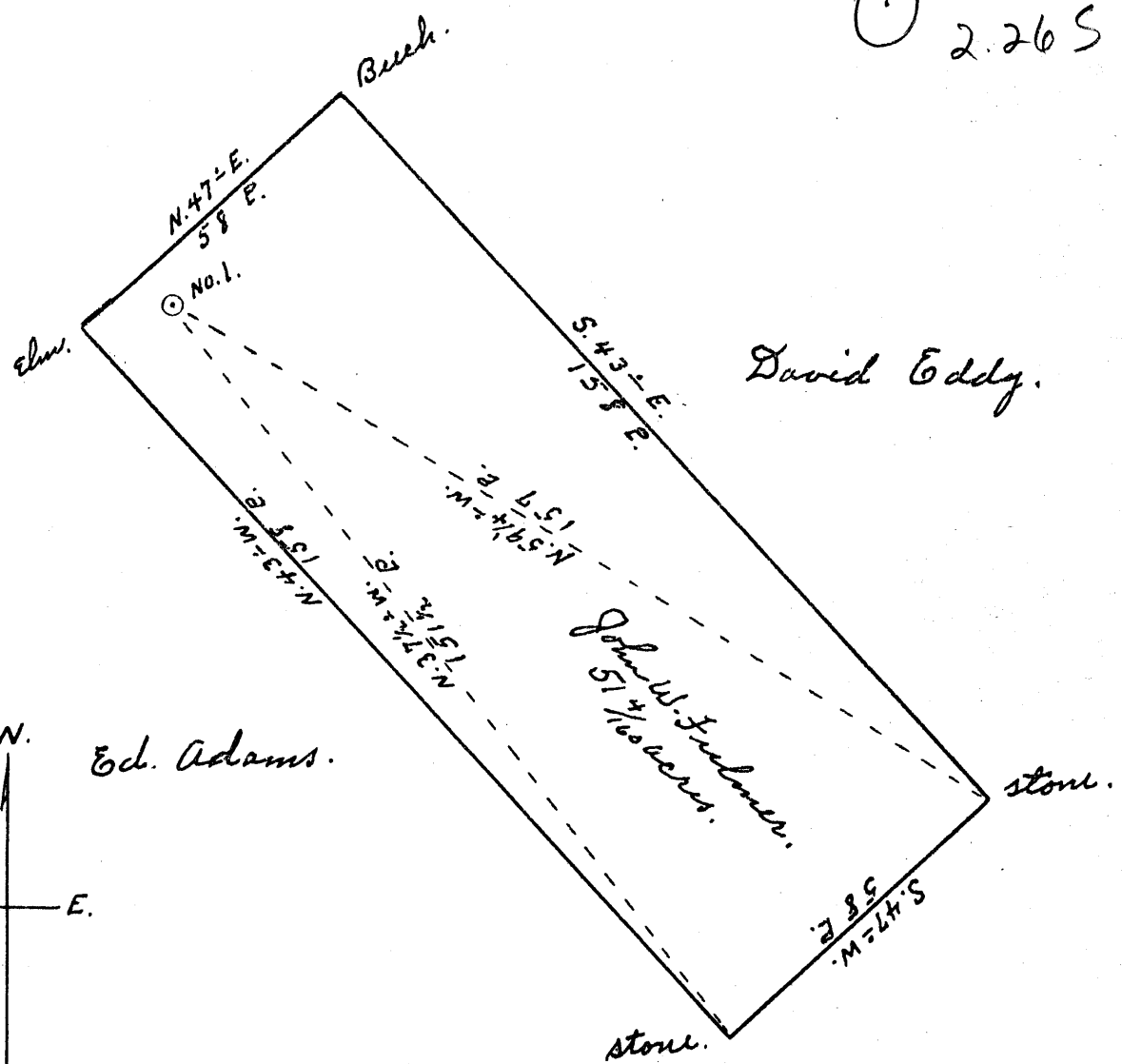


Latitude 39° 35'

Longitude 80° 50'

Leslie Van Camp.

(+) 1.71 W  
2.26 S



Ed. Adams.

David Eddy.

John W. Fulmer  
51 1/2 acres.

David Eddy.

1.71 W  
2.26 S

New Location   
 Drill Deeper   
 Abandonment

JUN 30 1958

Company Daniel Henthorn  
 Address Route 2, Sisterville, W. Va.  
 Farm John W. Fulmer.  
 Tract \_\_\_\_\_ Acres 51 1/2 Lease No. \_\_\_\_\_  
 Well (Farm) No. 1 Serial No. \_\_\_\_\_  
 Elevation (Spirit Level) 1160'  
 Quadrangle New Martinsville  
 County Tyler District Edsworth  
 Engineer Parker E. Potts  
 By Geo Triplett, Surveyor.  
 Engineer's Registration No. 485  
 File No. \_\_\_\_\_ Drawing No. \_\_\_\_\_  
 Date May 19 1958 Scale 1" = 30 P.

STATE OF WEST VIRGINIA  
 DEPARTMENT OF MINES  
 OIL AND GAS DIVISION  
 CHARLESTON

WELL LOCATION MAP  
 FILE NO. TYL-891-A

+ Denotes location of well on United States Topographic Maps, scale 1-to 62,500, latitude and longitude lines being represented by border lines as shown.

- Denotes one inch spaces on border line of original tracing.

JOHN W, FULMER no. 1 DANIEL HENTHORN TYL-891A