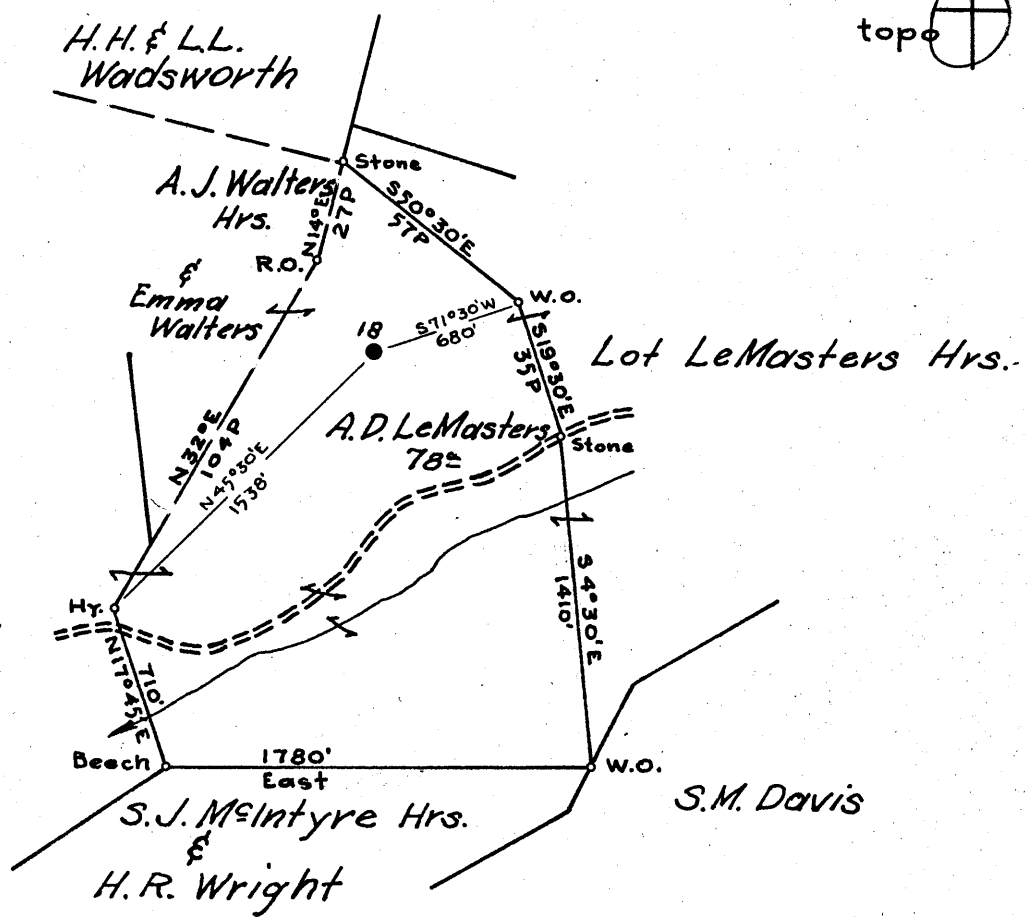


Latitude 39° 30'

Longitude 80° 40'

0.97 W  
2.42 S



H.H. & L.L. Wadsworth

Coal & Surface: H.H. Wadsworth  
Alvy, W. Va.

1.0 W  
2.43 S

- New Location...
- Drill Deeper.....
- Abandonment.....

JUL 7 1958  
Map N 41, N 112, W 4

Company	South Penn Natural Gas Co.
Address	Parkersburg, W. Va.
Farm	A.D. LeMasters
Tract	Acres 222 <sup>±</sup> Lease No. 12958 <small>24593-1/16 RG.</small>
Well (Farm) No.	18
Serial No.	
Elevation (Spirit Level)	1113.58 floor
Quadrangle	Centerpoint
County	Tyler
District	M. Elroy
Engineer	A.C. Helbert
Engineer's Registration No.	2534
File No.	
Drawing No.	
Date	May 26, 1958
Scale	1" = 800'

STATE OF WEST VIRGINIA  
DEPARTMENT OF MINES  
OIL AND GAS DIVISION  
CHARLESTON

**WELL LOCATION MAP**  
FILE NO. JYL-892-A

- + Denotes location of well on United States Topographic Maps, scale 1 to 62,500, latitude and longitude lines being represented by border lines as shown.
- Denotes one inch spaces on border line of original tracing.