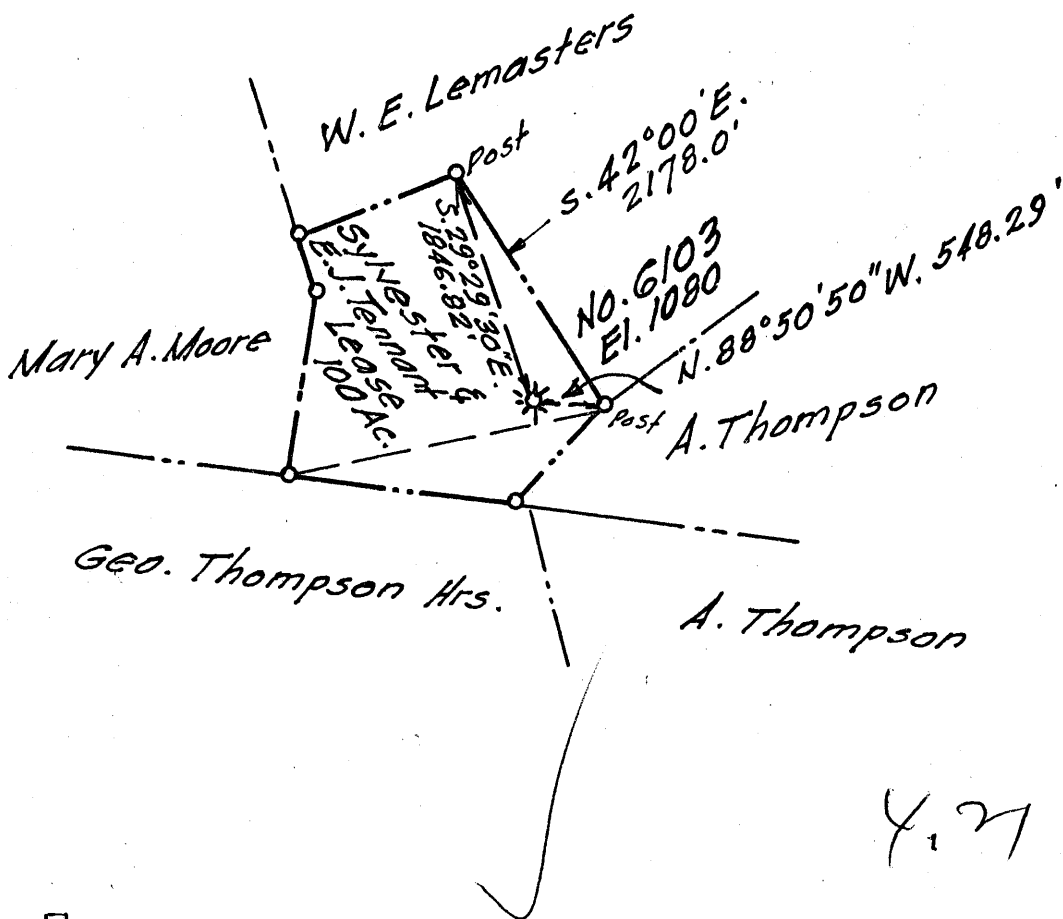


Latitude 39° 30'

Longitude 80° 40'

(+) 4.15 W  
2.77 S



4.27 W  
2.8 S

New Location.   
 Drill Deeper.   
 Abandonment.

JUL 15 1958

Company A. M. SNIDER.  
 Address 60 Sunset Dr., Fairmont, W. Va.  
 Farm Sylvester & E. J. Tennant  
 Tract \_\_\_\_\_ Acres 100 Lease No. \_\_\_\_\_  
 Well (Farm) No. 6103 Serial No. \_\_\_\_\_  
 Elevation (Spirit Level) El. 1080  
 Quadrangle Centerpoint  
 County Tyler District McElroy  
 Engineer James H. Helgerson  
 Engineers Registration No. 1868  
 File No. A. M. S. Drawing No. 1  
 Date April 5, 1958 scale 1" = 80 P.

STATE OF WEST VIRGINIA  
 DEPARTMENT OF MINES  
 OIL AND GAS DIVISION  
 CHARLESTON

WELL LOCATION MAP  
 FILE NO. JYL-895-A

+ Denotes location of well on United States Topographic Maps, scale 1 to 62,500, latitude and longitude lines being represented by border lines as shown.

— Denotes one inch spaces on border line of original tracing.