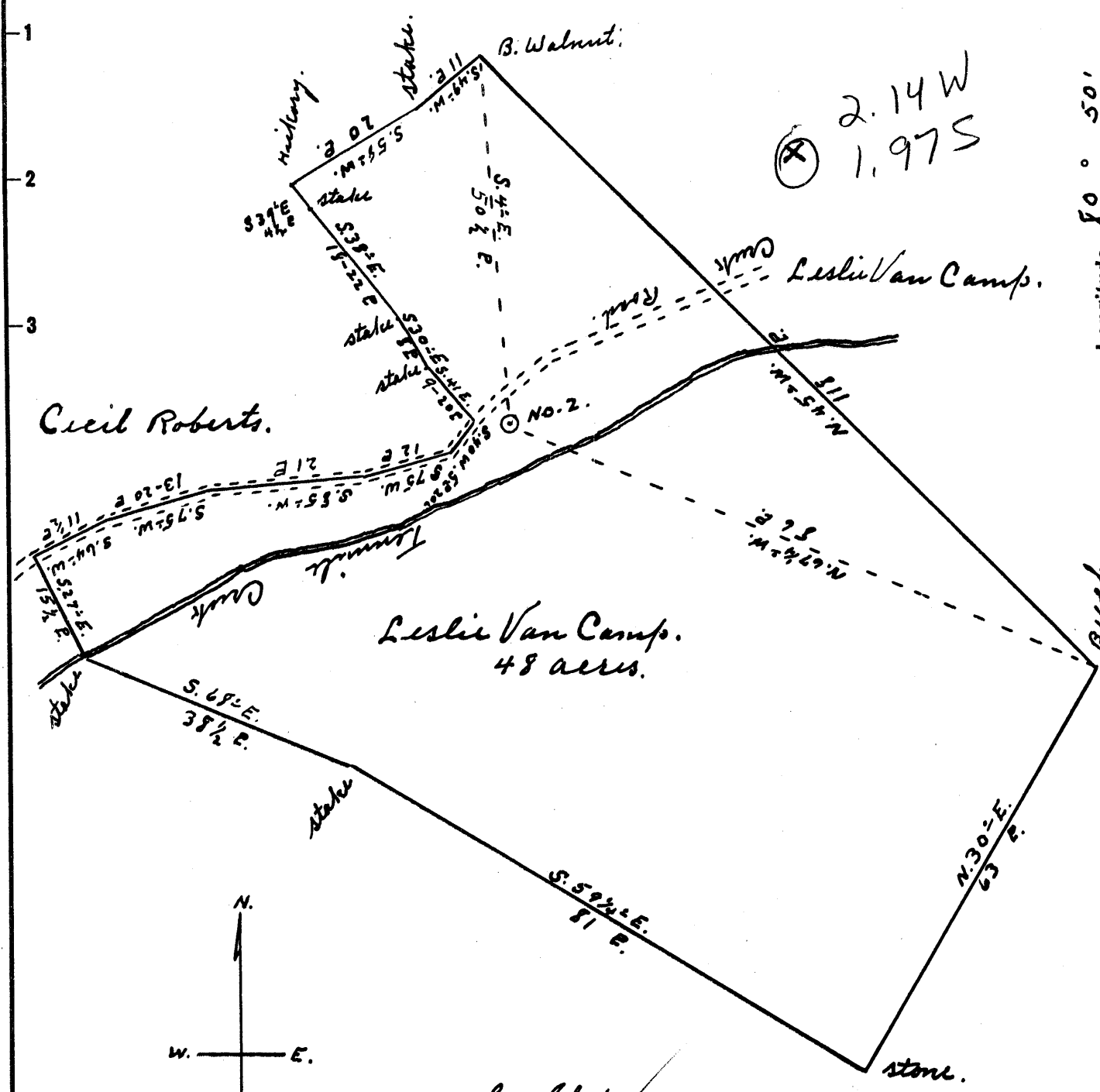


Latitude 39° 35'

Longitude 80° 50'

M. D. Watkins

2.14 W  
1.97 S



Cecil Roberts.

Leslie Van Camp.  
48 acres.

S. Skinner.

2.18 W  
2.0 S

- New Location ..
- Drill Deeper ..
- Abandonment ..

AUG 3 1958

Company Dan S. Henthorn  
 Address Sistersville P. 2, W. Va.  
 Farm Leslie Van Camp,  
 Tract \_\_\_\_\_ Acres 48 Lease No. \_\_\_\_\_  
 Well (Farm) No. 2 Serial No. \_\_\_\_\_  
 Elevation (Spirit Level) 718' (60)  
 Quadrangle New Martinsville, W. Va.  
 County Tyler District Ellsworth,  
 Engineer Checked by Parker E. Peters  
By Geo. Triplett, Surveyor  
 Engineer's Registration No. 485  
 File No. \_\_\_\_\_ Drawing No. \_\_\_\_\_  
 Date July 10, 1958 Scale 1" = 20' P.

STATE OF WEST VIRGINIA  
 DEPARTMENT OF MINES  
 OIL AND GAS DIVISION  
 CHARLESTON

WELL LOCATION MAP  
 FILE NO. JYL-897-A

- + Denotes location of well on United States Topographic Maps, scale 1 to 62,500, latitude and longitude lines being represented by border lines as shown.
- Denotes one inch spaces on border line of original tracing.