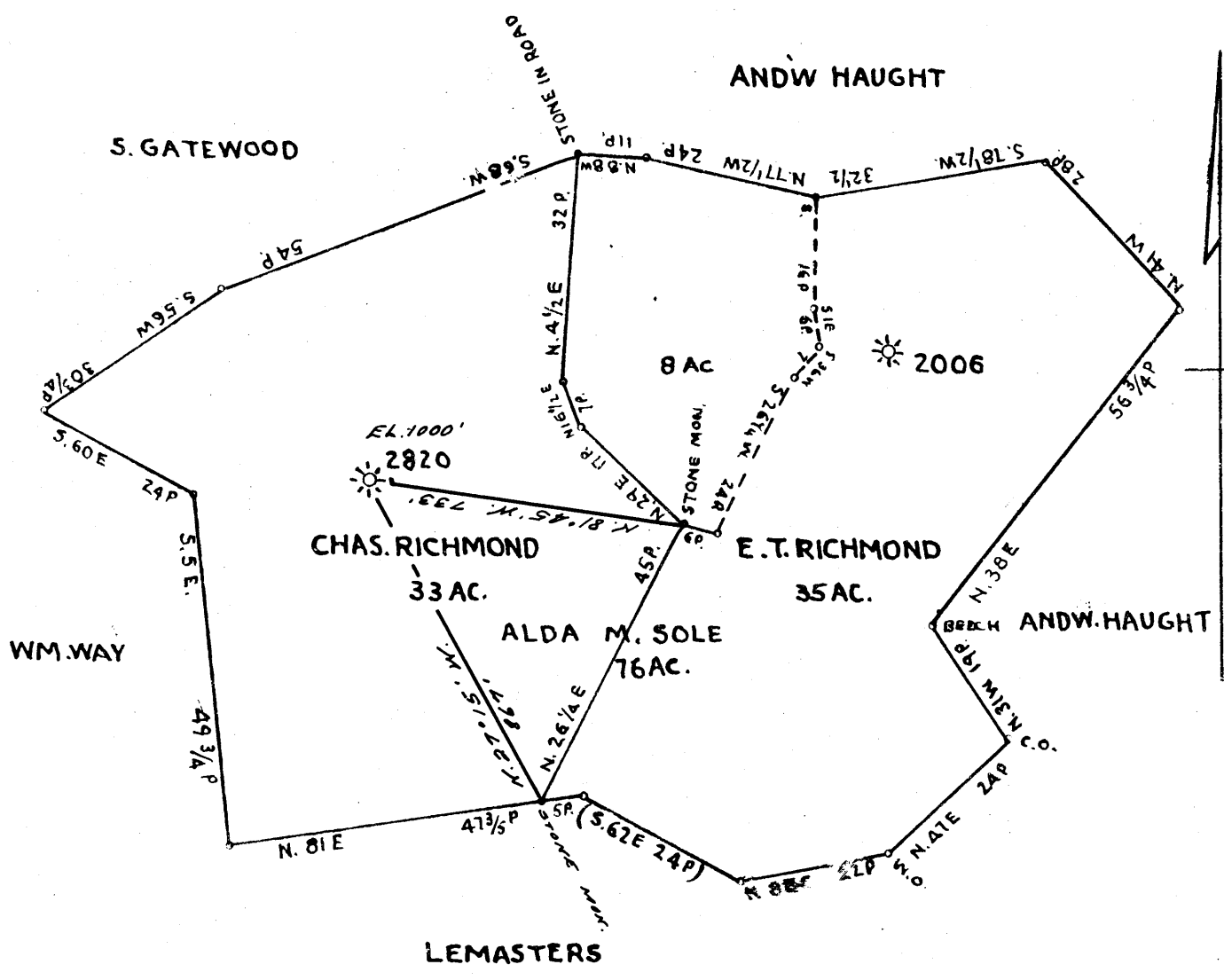


LATITUDE 39 ° 30 ' 1

⊕  
1.07 W  
0.57 S

LONGITUDE 80 ° 45 ' 80



COAL OWNED BY \_\_\_\_\_

- NEW LOCATION
- RECONDITION
- DRILL DEEPER
- ABANDONMENT

"I, the undersigned, hereby certify that this map is correct to the best of my knowledge and belief and shows all the information required by paragraph 6 of the rules and regulations of the oil and gas section of the mining laws of West Virginia."  
 Minimum degree of accuracy is one part in 200'

Signed Robert M. Hill

COMPANY THE MANUFACTURERS LIGHT & HEAT  
 ADDRESS 800 UNION TR. BUILDING, PGH., PA.  
 FARM CHARLES RICHMOND  
 MAP 9-24-5 ACRES 33 LEASE NO. 2638  
 WELL (FARM) NO. 1 SERIAL NO. 2820  
 ELEVATION (SPIRIT LEVEL) 1000'  
 QUADRANGLE WEST UNION QUAD. NE  
 COUNTY TYLER DISTRICT ELLSWORTH  
 POINT OF PROVEN ELEVATION WELL 2175, EL. 920.49 RUN FROM U.S.G.S. BM AT CONWAY EL. 841'  
 FILE NO. \_\_\_\_\_ DRAWING NO. Y-28-15  
 DATE 25 MAY 1965 SCALE 1" = 400'

STATE OF WEST VIRGINIA  
 DEPARTMENT OF MINES  
 OIL AND GAS DIVISION  
 CHARLESTON  
 WELL LOCATION MAP  
 FILE NO. TYL-938-A

+ DENOTES LOCATION OF WELL ON UNITED STATES TOPOGRAPHIC MAPS. SCALE 1 TO 62,500. LATITUDE AND LONGITUDE LINES BEING REPRESENTED BY BORDER LINES AS SHOWN.  
 - DENOTES ONE INCH SPACES ON BORDER LINE OF ORIGINAL TRACING.

Ellsworth District, Tyler County, W. Va.  
 Manufactures Light & Heat Co.  
 Elevation, 1020' B.  
 On Ridge Road.  
 Shown on 9-A, West Union Quadrangle.

	Top.	Bottom.
Pittsburgh Coal	650	- 653
Little Dunkard Sand	1000	- 1025
Big Dunkard Sand	1100	- 1130
Gas Sand	1205	- 1240
1st Salt Sand	1290	- 1475
2nd Salt Sand	1510	- 1555
3rd Salt Sand (show <del>oil</del> gas, 1565-1600')	1565	- 1600
Maxton Sand (show oil, 1803-12')	1800	- 1850
Lime	1850	- 1865
Slate	1865	- 1878
Big Lime	1878	- 1938
Big Injun Sand (gas, 1953'; water, 2039-2049')	1938	- 2180
Gantz Sand	2320	- 2385
50-Ft. Sand	2540	- 2555
Gordon Sand (gas, 2760-2770')	2745	- 2775
Total depth		2816

Water, 2 gal., 24 hrs.