

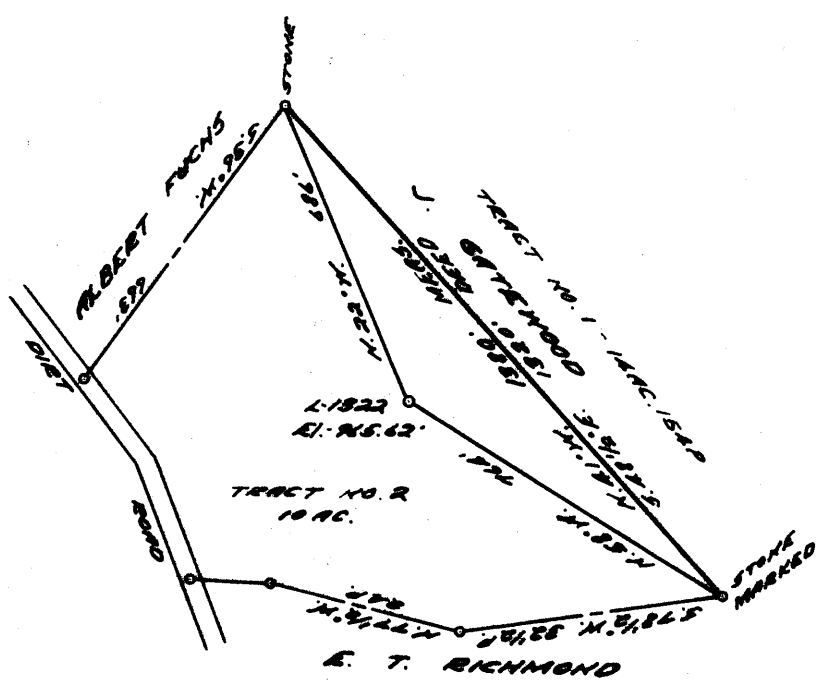
WS 8-31-65

LATITUDE 39 ° 30 ' 1

(+)

0.94 W
0.39 S

LONGITUDE 80 ° 45'



COAL OWNED BY LEYMAN, RUTH KEFF

- NEW LOCATION
- RECONDITION
- DRILL DEEPER
- ABANDONMENT

"I, the undersigned, hereby certify that this map is correct to the best of my knowledge and belief and shows all the information required by paragraph 6 of the rules and regulations of the oil and gas section of the mining laws of West Virginia."
 Minimum degree of accuracy is one part in 200'

Signed Robert M. Heill R.T.G.

COMPANY THE MANUFACTURERS LIGHT & HEAT CO.
 ADDRESS 800 UNION TRUST BLDG, ASN. PV.
 FARM J. L. D. GATEWOOD
 MAP 9-24-5 ACRES 10 LEASE NO. L 3430
 WELL (FARM) NO. 1 SERIAL NO. 1822
 ELEVATION (SPIRIT LEVEL) 95.42'
 QUADRANGLE WEST UNION - NE
 COUNTY TYLER DISTRICT ELLSWORTH
 POINT OF PROVEN ELEVATION B.M. AT COMPANY
 FILE NO. _____ DRAWING NO. Y-28-AA
 DATE 26 AUG. 1965 SCALE 1" = 100'

STATE OF WEST VIRGINIA
 DEPARTMENT OF MINES
 OIL AND GAS DIVISION
 CHARLESTON
 WELL LOCATION MAP
 FILE NO. TYL-939-A

+ DENOTES LOCATION OF WELL ON UNITED STATES TOPOGRAPHIC MAPS, SCALE 1 TO 62,500, LATITUDE AND LONGITUDE LINES BEING REPRESENTED BY BORDER LINES AS SHOWN.
 - DENOTES ONE INCH SPACES ON BORDER LINE OF ORIGINAL TRACING.

GATEWOOD NO. 1322 WELL.

Gal. No. 280 (160)

70277

NEW 30939

Ellsworth District, Tyler County, W. Va.

Manufacturers Light & Heat Co.

Elevation, 990'.

Completed in 1904.

Gas well.

Shown on 9-A, West Union Quadrangle.

	Top.	Bottom.
Big Injun Sand (gas, 1883'; water, 1996')	1923	2128
Gordon Sand (gas, 2703' & 2723')	2703	2728
Total depth		2733