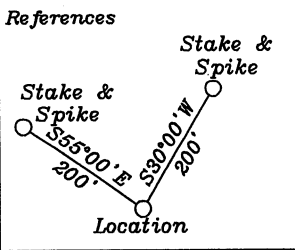


LATITUDE 39-00-00 N (TH)
LATITUDE 38-57-30 N (BH)



- A- Casto 106.30 Ac. TM.5H/13
- B- Gregory 1.05 Ac. TM.5H/13.1
- C- Casto 1.56 Ac. TM.5H/13.3
- D- Gregory 0.92 Ac. TM.5H/13.2
- E- Morgan 99.55 Ac. TM.5H/28.1
- F- Hoover 6.15 Ac. TM.5H/2.2
- G- McGowan 45.88 Ac. TM.5H/3.1
- H- Heavner 16.12 Ac. TM.5H/10.5
- I- Heavner 5.37 Ac. TM.5H/10.3
- J- Ashcraft 27.34 Ac. TM.5H/30
- K- Light 20.39 Ac. TM.5H/40
- L- Hannon 20 Ac. TM.5H/31
- M- Forbes 12.726 Ac. TM.5H/32
- N- Poling 4.45 Ac. TM.5H/33
- O- Hollen 1.33 Ac. TM.5H/33.24
- P- Mills 1.34 Ac. TM.5H/33.23
- Q- Mills 1.33 Ac. TM.5H/33.22
- R- Honeycutt 1.29 Ac. TM.5H/33.21
- S- Metzner 0.966 Ac. TM.5H/33.8
- T- Smith 1.55 Ac. TM.5H/33.1
- U- Tallman 0.96 Ac. TM.5H/33.10
- V- Tallman 0.90 Ac. TM.5H/33.14
- W- Westfall 1.95 Ac. TM.5H/33.17

Trst of Light Chapel Church 3.15 Ac. TM.5H/2.1

Light 258.69 Ac. TM.5H/2

Casto 74.29 Ac. TM.5H/50

Hockenberry 116.37 Ac. TM.5H/29

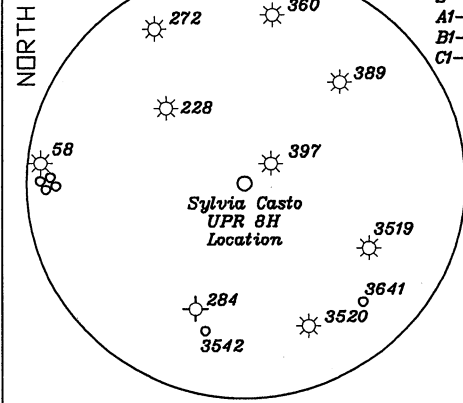
Poling 263.80 Ac. TM.5J/59

- X- Coberty 0.47 Ac. TM.5H/33.13
- Y- Coberty 0.90 Ac. TM.5H/33.6
- Z- McCartney 0.53 Ac. TM.5H/33.3
- A1- Honeycutt 0.66 Ac. Ft. TM.5H/33.9
- B1- Bailey 0.88 Ac. TM.5H/33.2
- C1- Wamsley 0.7 Ac. TM.5H/33.5

- D1- Snyder 0.67 Ac. TM.5H/33.16
- E1- Crose 1.53 Ac. TM.5H/33.20
- F1- Butler 2.41 Ac. TM.5H/33.4 & 33.18
- G1- Carr 0.41 Ac. TM.5H/33.19
- H1- Hardesty TM.5H/33.7
- J1- Workman 1.25 Ac. TM.5H/44
- K1- City of Buckhannon 0.62 Ac. TM.5H/43.1
- L1- Rowan 19.16 Ac. TM.5H/36
- M1- Mike Ross Inc. 1.378 Ac. TM.5H/35
- N1- Straight 2.151 Ac. TM.5H/115
- O1- Westfall 9.08 Ac. TM.5H/47
- P1- Hyre 2.96 Ac. TM.5H/63
- Q1- Baza 2.798 Ac. TM.5J/59.3
- R1- Trsts 2.47 Ac. TM.5J/59.1

NUMBER	DIRECTION	DISTANCE
L1	N77°48'E	2358.9'
L2	N34°26'E	2792.9'

Notes: Ties to wells and corners are based on State Plane Grid North-WV South Zone NAD 27.



Top Hole
NAD 27-38.964423 N, 80.258225 W
UTM NAD 83-14150566.4 N, 1851311.6 E
State Plane NAD 27-716178.9 N, 2210930.1 E

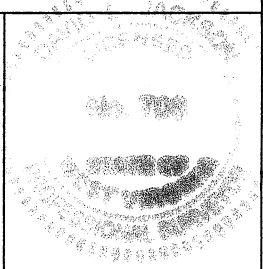
Bottom Hole
NAD 27-38.949441 N, 80.251416 W
UTM NAD 83-14145127.9 N, 1853291.9 E
State Plane NAD 27-710738.0 N, 2212910.3 E

(+) DENOTES LOCATION OF WELL ON UNITED STATES TOPOGRAPHIC MAPS

FILE NO. _____
DRAWING NO. 1
SCALE 1" = 2000'
MINIMUM DEGREE OF ACCURACY 1 in 2500
PROVEN SOURCE OF ELEVATION GPS
submeter unit

I THE UNDERSIGNED, HEREBY CERTIFY THAT THIS PLAT IS CORRECT TO THE BEST OF MY KNOWLEDGE AND BELIEF AND SHOWS ALL THE INFORMATION REQUIRED BY LAW AND THE REGULATIONS ISSUED AND PRESCRIBED BY THE DEPARTMENT OF ENERGY

(SIGNED) David L Jackson
R.P.E. _____ L.L.S. 708



STATE OF WEST VIRGINIA
Division of Environmental Protection
OFFICE OF OIL AND GAS

DATE April 20, 2011
OPERATOR'S WELL NO. Sylvia Casto UPR 8H
API WELL NO. _____

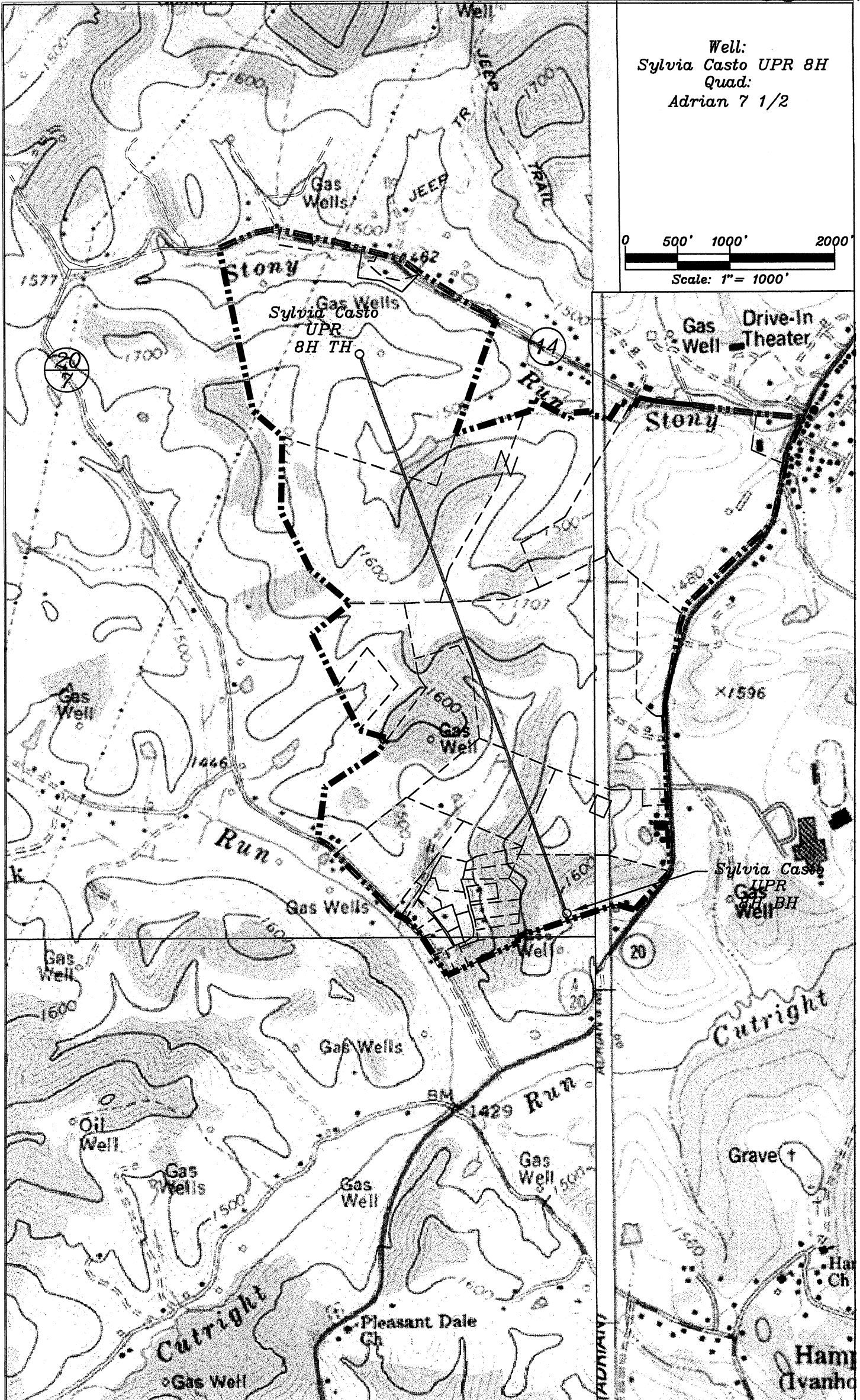
WELL TYPE: OIL GAS X LIQUID INJECTION WASTE DISPOSAL STATE 47 COUNTY 097 PERMIT 03830H
(IF "GAS") PRODUCTION X STORAGE DEEP SHALLOW X

LOCATION: ELEVATION 1636' WATER SHED Stoney Run
DISTRICT Buckhannon COUNTY Upshur
QUADRANGLE Adrian 7 1/2'

SURFACE OWNER Sylvia Grey Casto ACREAGE 106.30 ac.
OIL & GAS ROYALTY OWNER Sylvia Grey Casto LEASE ACREAGE 456.06 ac
LEASE NO. 1-326776-001, 1-326777-000, 1-326778-000, 1-326779-000, 1-326780-001, 1-326781-001

PROPOSED WORK: DRILL X CONVERT DRILL DEEPER REDRILL FRACTURE OR STIMULATE PLUG OFF OLD FORMATION PERFORATE NEW FORMATION X OTHER PHYSICAL CHANGE IN WELL (SPECIFY) _____

PLUG AND ABANDON CLEAN OUT AND REPLUG
TARGET FORMATION Marcellus ESTIMATED DEPTH 7,520'+ Horizontal leg
WELL OPERATOR Chesapeake Appalachia, L.L.C. DESIGNATED AGENT Eric B. Gillespie
ADDRESS P.O. Box 18496 Oklahoma City, OK 73154-0496 ADDRESS P.O. Box 6070 Charleston, WV 25362



Well:
 Sylvia Casto UPR 8H
 Quad:
 Adrian 7 1/2

