

LATITUDE 39°00'

LONGITUDE 01°08'



5.240  
2.37W

T'5 OGIS topo location

7.5' loc \_\_\_\_\_  
\_\_\_\_\_

15' loc \_\_\_\_\_  
(calc.) \_\_\_\_\_

Company Union Gasoline & Oil Corp

Farm Lafayette Westfall 708

Quad Psago 15'

County Upshur

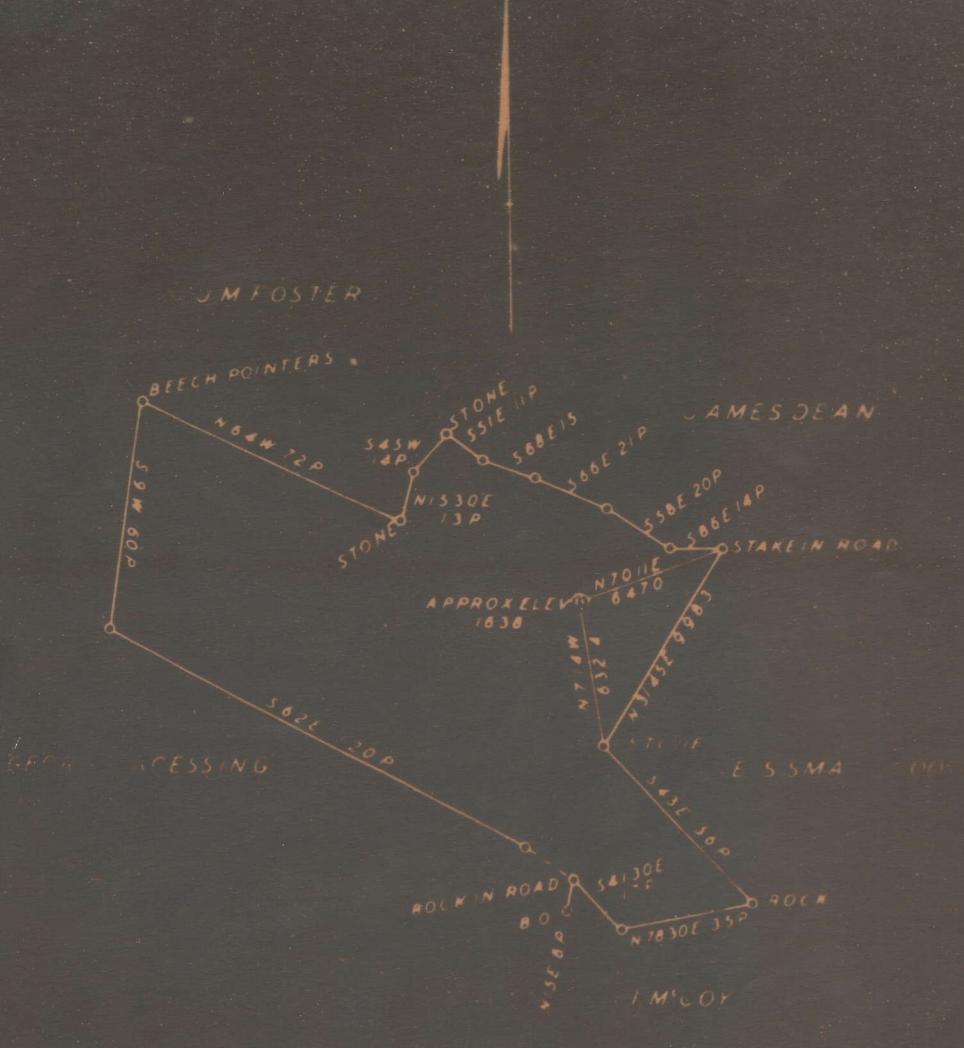
District Washington

WELL LOCATION MAP

File No. 097-30001

WAS: 097-70003

DEED OF THE PROPOSED ABANDONMENT OF WELL NO 708  
 UNION GASOLINE & OIL CORPORATION OF PITTSBURGH, PA  
 ON THE LAFAYETTE WESTFALL FARM OF 84 ACRES 1/4  
 IN WASHINGTON DISTRICT, UP SHUR COUNTY, W VA  
 AS OWNED BY  
 UPSHUR COAL BLOCK CO



ENGINEERS CERTIFICATE

UPS-1-A

I, THE UNDERSIGNED, HEREBY CERTIFY THAT THIS MAP IS CORRECT AND SHOWS  
 ALL THE INFORMATION, TO THE BEST OF MY KNOWLEDGE AND BELIEF, REQUIRED  
 BY THE OIL AND GAS SECTION OF THE MINING LAWS OF WEST VIRGINIA

*David H. Dorkin*  
 ENGINEER

WAS: 097 - 70003

Lafayette Westfall (627)

Name	Color	Character	Oil, Gas or Water	Top	Bottom	Thickness	Total Depth	Remarks
Coal				400	405			
Little Dunkard				0				
Big Dunkard				470	525			
Gas Sand				600	615			
1st Salt Sand				702	825			
2nd Salt Sand				850	925			
Maxon Sand				1000	1070			
Little Lime				1183	1188			
Pencil Cave				1188	1195			
Big Lime				1195	1260			
Big Injun				1260	1412			
Squaw Sand				1430	1525			Gas 1266 Oil 1278
Gants Sand				1533	1552			Oil 1440-1470
5th Sand				Limey Shells				
Slate & Shells				2045	2055			Gas 2050
Total depth				2065	2519			

Well was not shot at \_\_\_\_\_ feet; well was shot at \_\_\_\_\_ feet.

Salt  
 Fresh water at \_\_\_\_\_ salt  
 feet; fresh water at \_\_\_\_\_ feet.

Well was \_\_\_\_\_ producing  
 dry hole.

UNION GASOLINE & OIL CORPORATION,

October 15th, 1932  
 Date

Approved \_\_\_\_\_

Owner

Land Agent.

NOTE: All bottom formations must be noted as indicated above and all key-rocks and all their proper geological names must be noted.

WEST VIRGINIA DEPARTMENT OF MINES

OIL AND GAS DIVISION

PRELIMINARY DATA SHEET NO. 1

File No. \_\_\_\_\_ Well No. 708  
UNION GASOLINE & OIL CORPORATION Company, of 800 Union Trust Bldg.,  
Pittsburgh, Pa., on the Lafayette Westfall Farm

containing 3 1/2 acres. Location  
Washington District, in Upshur County, West Virginia

The surface of the above tract is owned in fee by Lafayette Westfall  
of c/o Buckhannon Bank, Buckhannon, WVa., address, and the mineral rights are owned by  
Union Gasoline & Oil Corporation of Pittsburgh, Pa.,

The oil and gas privileges are held under lease by the above named company, and this well is drilled under permit  
No. drilled prior to 6/1/29 issued by the West Virginia Department of Mines, Oil and Gas Division  
188

Elevation of surface at top of well, 1638 feet Spirit  
Barometric.

The number of feet of the different sized casings used in the well.

feet	size.	Wood conductor.
90	10" size, cag.	760 feet 8 1/4" sized cag.
1396	6 5/8" size, cag.	40 feet 5 3/16" sized cag.
	size, cag.	feet sized cag.

packer of \_\_\_\_\_ size, set at \_\_\_\_\_  
packer of \_\_\_\_\_ size, set at \_\_\_\_\_  
in casing perforated at \_\_\_\_\_ feet to \_\_\_\_\_ feet.  
in casing perforated at \_\_\_\_\_ feet to \_\_\_\_\_ feet.

Coal was encountered at 400 feet; thickness 60 inches, and at  
feet; thickness \_\_\_\_\_ inches; and at \_\_\_\_\_ feet; thickness \_\_\_\_\_ inches.

Liners were used as follows: (Give details)  
\_\_\_\_\_  
\_\_\_\_\_  
\_\_\_\_\_

October 15th, 1932 Date.

Approved UNION GASOLINE & OIL CORPORATION, Owner.

Land Agent.

LAFAYETTE WESTFALL NO. 708 WELL.

No. 35 O. F. (Upshur).

70003

NOV:097-3000 | 59C-Roger

Washington District, Upshur County, W. Va.

Union Gasoline & Oil Corporation, 800 Union Trust Bldg.,  
Pittsburgh, Pa.

On 84 acres; surface owned by Lafayette Westfall,  $\frac{1}{2}$ Buckhannon Bank,  
Buckhannon, W. Va., and mineral rights by Union Gasoline & Oil  
Corp., Pittsburgh, Pa.

Drilled prior to June 1, 1929.

Elevation, 1638'.

10" casing, 90'; 8 $\frac{1}{2}$ " , 760'; 6-5/8" , 1396'; 5-3/16" , 40'.

Coal was encountered at 400-405'.

Abandonment? reported to Dept. of Mines Oct. 15, 1932.

	Top.	Bottom.
Coal, Quakertown?	400	- 405
<del>Little-Dunkard Sand</del>	None	
<del>Big-Dunkard Sand</del>	470	- 525
<del>Gas Sand</del>	600	- 615
<del>1st-Salt Sand</del>	792	- 825
<del>2nd-Salt-Sand, Upper Raleigh (Sharon)</del>	850	- 925
Maxton Sand	1000	- 1070
Little Lime	1183	- 1188
Pencil Cave	1188	- 1195
Big Lime	1195	- 1260
Big Injun Sand (gas, 1266'; oil, 1278')	1260	- 1412
Squaw Sand (oil, 1440-1470')	1430	- 1525
<del>Ganta Sand, Weir</del>	1533	- 1552
	Limy shells	
5th Sand (gas, 2050')	2045	- 2055
Slate and shells, to bottom	2065	- 2519

DD-

This well was drilled by Carnegie Natural Gas Co.; their No. 1276.

On 85 acres; NW $\frac{1}{4}$  Sago Quad.

✓ Drilling commenced March 7, 1925; completed, May 2, 1925.

✓ Not enough gas to test.

✓ Oil showing 2 bbl. per day after shot.

✓ No. 59C-Roger. ?

On Little Sand Run of Buckhannon River, 0.8 mi. N. W. of Ivy.

Sec <sup>Upshur</sup> 6A - some farm,  
another well

Tallmansville field (315)