

LATITUDE 38° 55'

LONGITUDE 80° 20'

Rosa J. Paterson

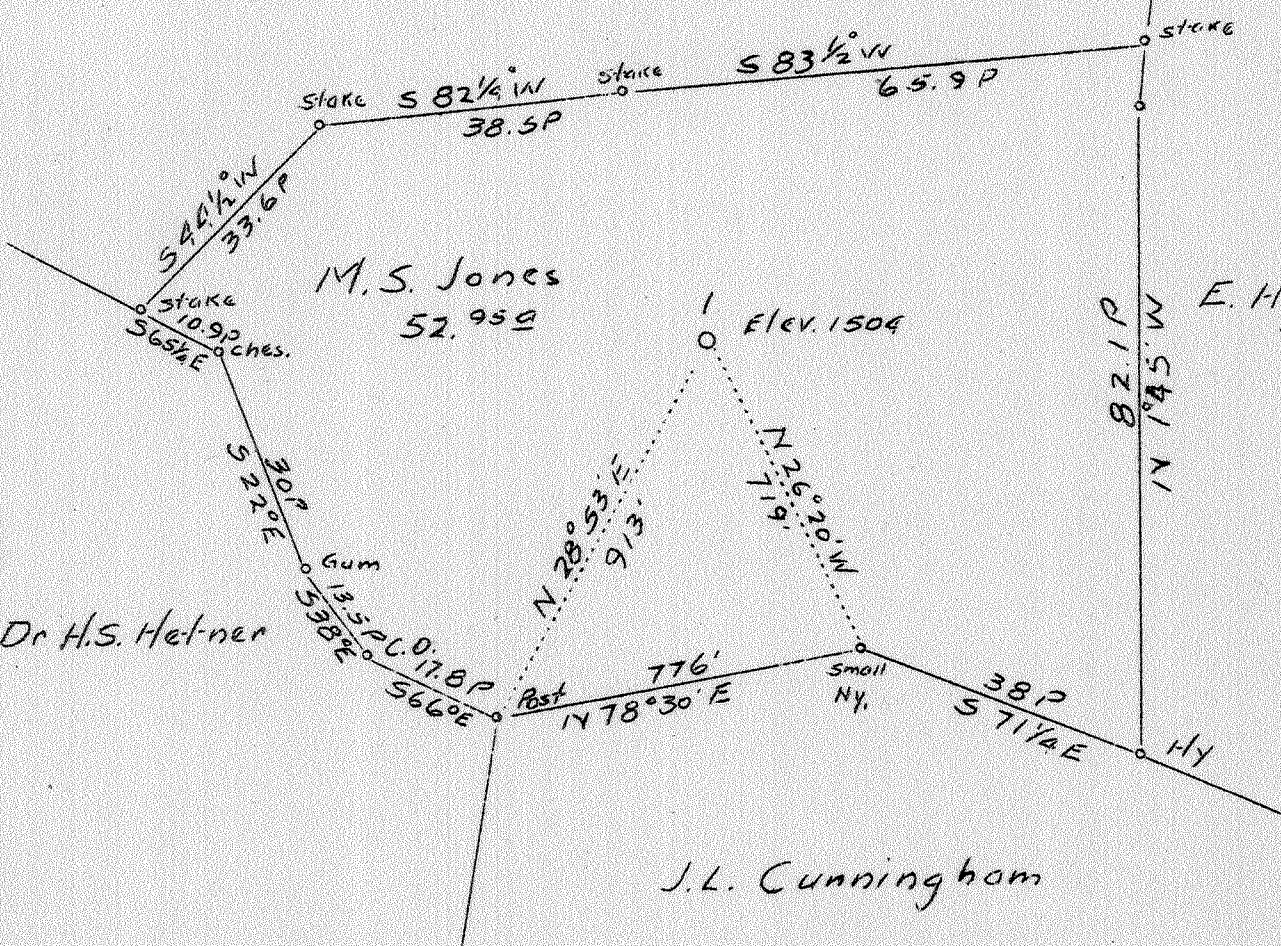
M. S. Jones
52.95a

E. Hyre

Dr. H. S. Helmer

J. L. Cunningham

0.92 W
0.52 S



Company	Union Gas Corporation
Address	Covington, Kentucky
Farm	M. S. Jones
Tract	1 acres 52.95
Lease No.	
Well (Farm) No.	1
Serial No.	
Elevation (Spirit Level)	1504
Quadrangle	Crawford
County	Upshur
District	Meade
Engineer	S. H. Bradley
Engineer's Registration No.	135
File No.	
Drawing No.	
Date	11-21-36
Scale	1" - 400'

STATE OF WEST VIRGINIA
 Department of Mines
 Oil and Gas Division
 Charleston

WELL LOCATION MAP

File No. UP-4A

WGO 097 70077

+ Denotes location of well on U. S. Topographic Maps, scale 1 to 62,500 latitude and longitude lines being represented by border lines as shown.

- Denotes one inch spaces on border line of original tracing.

LATITUDE 38° 55' 00"

7262



CRAWFORD NE



0.638
0.86W

LONGITUDE 80° 20' 00"

7'5 OGIS topo location

7.5' loc _____ 15' loc 0.635
(calc.) 0.86W

Company Eq Gas Co

Farm Jones # 7262

Quad Adrian 7 1/2 / Crawford C

County Upshur

District Meade

WELL LOCATION MAP

File No. 097-70077

Now 097 30004