

0 1 2 3 LATITUDE 38° 15'

1

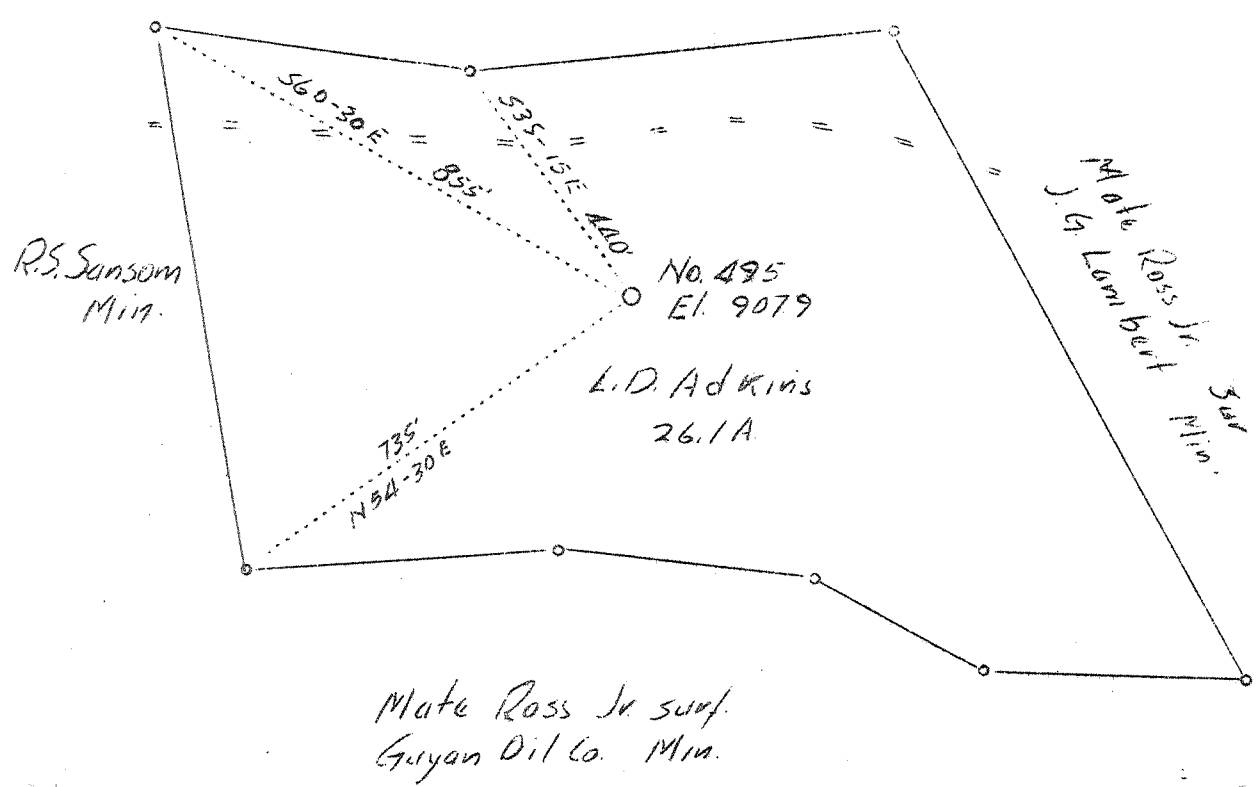
2

3 LONGITUDE 82° 20'



Alvin Tony - Sur  
J.B. Crum - Min.

W.M. Allen & Lucian Lester



3.38<sup>3</sup> W  
2.7688

1427 495

Company	The Owens, Libbey-Owens Gas Dept.
Address	Box 1375, Charleston, W.Va.
Farm	L.D. Adkins
Tract	Acres 26.1 Lease No. 1427
Well (Farm) No.	1 Serial No. 495
Quadrangle	Wayne <i>Wayne</i>
County	Wayne
District	Union
Engineer	T.S. Flournoy
Engineer's Registration No.	269
File No.	Drawing No.
Date	Oct. 21, 1937 Scale 1"=300'

STATE OF WEST VIRGINIA  
Department of Mines  
OIL AND GAS DIVISION  
CHARLESTON

WELL LOCATION MAP  
File No. *WAY-129*

+ Denotes location of well on United States Topographic Maps, scale 1 to 62,500, latitude and longitude lines being represented by border lines as shown.

— Denotes one inch spaces on border line of original tracing.

6-4-23

*Deep Well*

WEST VIRGINIA DEPARTMENT OF MINES

OIL AND GAS DIVISION

WELL RECORD

Permit No. Way-129

Gas Well

Wayne Quad.

CASING & TUBING

Company	The Owens, Libby-Owens Gas Dept.	13	45 1/2	45 1/2
Address	P.O.Box 1375, Charleston, W.Va.	8 1/2	312	312
Farm	L.D.Adkins Acres 26	6 5/8	1360	1360
Location	Wilson Creek	3	3088	3088
Well No.	495 Elev. 907.9'	5 3/16	678	678 (Line)
District	Union County Wayne	PACKER		
Surface	L.D.Adkins, 1322 10th Ave.	Kind	Comb. Anchor Wa	
Address	Huntington, W.Va.	Size	3 x 6 5/8 x 16"	
Mineral	Same	Depth	2118	
Drilling	Commenced Nov. 10, 1937	Perf. top	2408	
	Completed Jan. 5, 1938	Perf. bottom	3086	
Date Shot	12-29-37	Depth 2510-3050	Perf. top	3055
Volume	61,000 Cu.Ft. - In jun Sand; 210,000 Cu.Ft. - Shale (Pf.bt)		3065	
Rock Press.	344 and 508# 24 hrs.			

Formation	Color	Hov	TOP	Base	Results	Formation	Color	Hov	TOP	Base	Results
Surface	Red	S	0	10							
Clay	Yellow	S	10	24		NOTE: Filled hole with	Rock.		3334	3050	
Sand	Gray	H	24	67		Cleaned out A.S.			3050	3086	
Slate	Light	S	67	275	Water	Total depth of hole when tubed			3086		
Coal	Black	S	275	277	40'						
Sand	White	S	277	312	1 Bail						
Slate	White	S	312	314	pr.hr.						
Sand	White	H	314	332							
Sand	White	S	332	445	Water						
Slate	Dark	S	445	466	400'						
Sand	White	S	466	490	Enough						
Slate	White	S	490	541	to drill						
Sand	White	M	541	579							
Slate	Black	S	579	724							
Sand	White	M	724	762							
Slate	Dark	S	762	766							
Sand	White	M	766	799	Water						
Slate	Dark	S	799	822	766'						
Slate&Shells	Dark	S	822	865	Hole						
Slate	Dark	S	865	908	Full						
Slate&Shells	Dark	S	908	916							
Sand	White	M	916	1068							
Slate&Shells	Light	S	1068	1096							
Shale	Light	S	1096	1099							
Sand	White	M	1099	1226							
Slate	Gray	S	1226	1245							
Lime	Dark	H	1245	1255							
Rcd Rock		S	1255	1267							
Slate	Light	S	1267	1281							
Little Lime	Dark	H	1281	1322							
Slate	Black	S	1322	1324							
Big Lime	White	H	1324	1507							
Injun Sand	Red	H	1507	1531							
Injun Sand	Gray	H	1531	1536							
Injun Sand	Dark	H	1536	1561							
Slate	Dark	S	1561	1565							
Slate & Shells	Light	M	1565	1635	Gas						
Slate&Shells	Dark	M	1635	2007	1571'						
Slate&Shells	Dark	H	2007	2103	74,000						
Shale	Brown	S	2103	2115							
Borca Sand	White	H	2115	2124	Gas						
Shale	Brown	M	2214	2283	2124'						
Slate&Shells	Light	M	2283	2335	31,000						
Shells	Light	H	2335	2353							
Slate&Shells	Light	M	2353	2450	Gas						
Slate	Light	S	2450	2538	2100'						
Shale	Brown	S	2538	2650	7,000						
Slate&Shells	Light	M	2650	2674							
Shale	Brown	S	2674	2844							
Shale&Shells	Brown	S	2844	2877							
Shale	Brown	S	2877	3047							
Slate	Light	S	3047	3271							
Shale	Brown	S	3271	3327							
Coriferous	Lime Dk.H		3327	3334							
TOTAL DEPTH				3334							

3327  
908  
2419