

Latitude

381230

→ 0625
75'bc
W = 7161599

0.165
1670

82 2730

Longitude

Topo Location

7.5' Loc. _____ 15' Loc. 3,045
_____ (calc.) 394W

Company _____

Farm _____

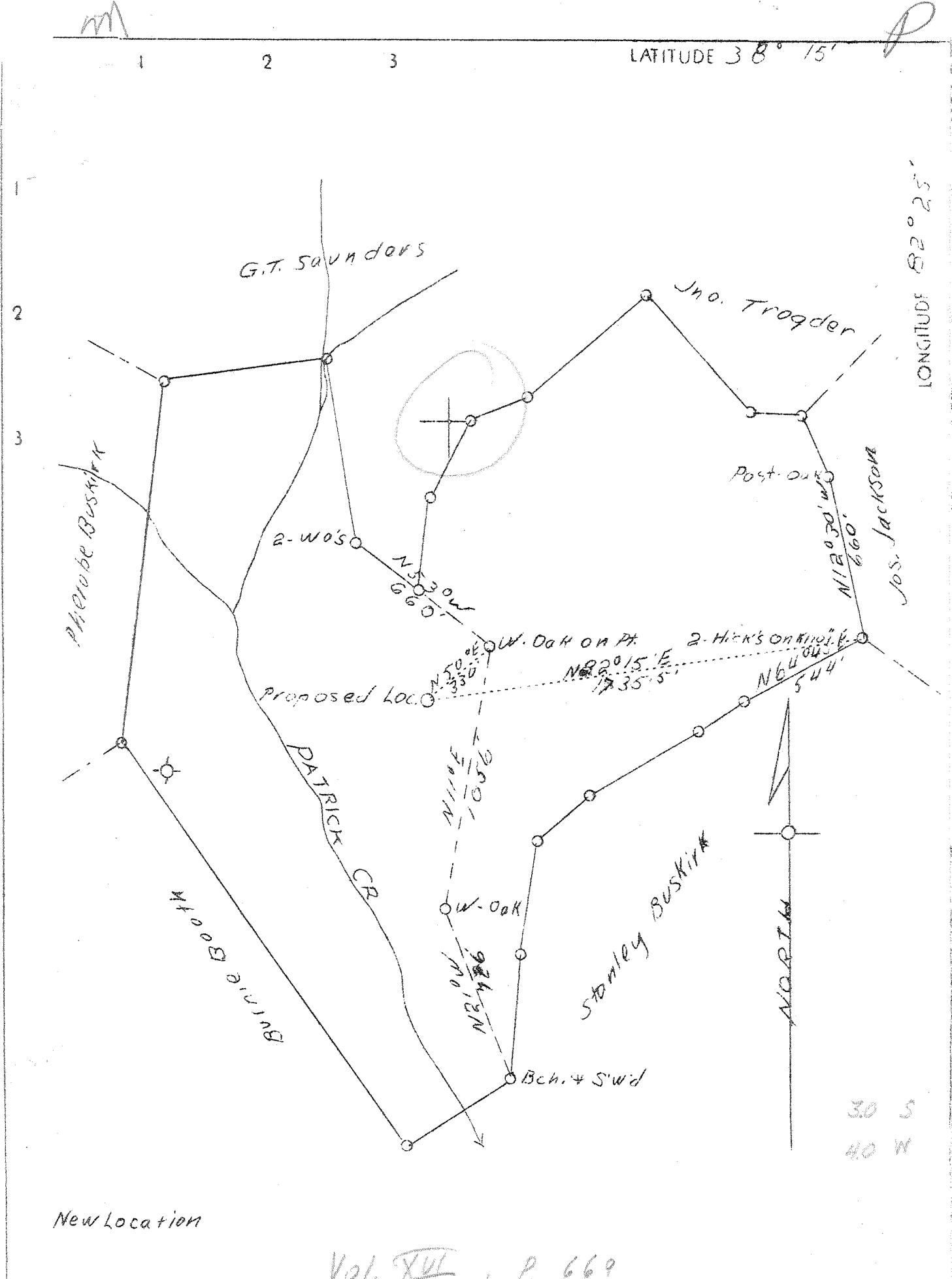
15' Quad Wayne NW
(sec.) _____

7.5' Quad Wayne

District _____

WELL LOCATION PLAT

County 099 Permit 138



Company Chartiers Oil Co.
 Address Pittsburgh, Pa.
 Farm G. T. Saunders
 Tract 200
 Well (Farm) No. 2
 Elevation 697.4 (Spirit Level)
 Quadrangle Wayne ~~NE~~ NW Wayne 75'
 County Wayne
 District Butler
 Engineer Basil S. Burgess
 Eng. Reg. No. 469
 Date June 1, 1938
 Scale 1" = 495'

STATE OF WEST VIRGINIA
 Department of Mines
 OIL & GAS DIVISION
 Charleston

WELL LOCATION MAP
 File No. Way-138

X Denotes location of well on U. S. Topographic Maps, Scale 1 to 62,500, latitude and longitude lines being represented by border lines as shown.

- Denotes one inch spaces on border line of original tracing.

Sample No. 3 (K) 1246-3757 Dead Well

WEST VIRGINIA DEPARTMENT OF MINES

OIL & GAS DIVISION

WELL RECORD

Permit No. Wayne-138

Gas well

Wayne Quad.

CASING & TUBING

Company	Chartiers Oil Co.	13	16	Conductor
Address	Pittsburgh, Pa.	10	188	
Farm	G. T. Saunders, et al	8-1/4	1137	ACRES 229
Well No.	Two	6-5/8	1429	ELEV. 697.4
District	Butler	5-3/16	3307	County Wayne
Surface & Mineral	G. R. Saunders, et al	6-5/8	600	
Address	Wayne, W. Va.	5-3/16	200	outside of pipe
Drilling commenced	June 26, 1938			
Drilling completed	Aug. 24, 1938	Coal encountered at 36'		
Shot	-	24 inches thick		
Open Flow	-			
Volume	- 223 M			
Rock Pressure	-			
Oil	-			
Water	-			

Formation Color ^{43'} TOP Base Result Formation Color ^{43'} TOP Base Result

Formation	Color	^{43'} TOP	Base	Result	Formation	Color	^{43'} TOP	Base	Result
Gravel		0	10						
Slate		10	36						
Coal		36	38						
Sand	white	38	255	W - 40'					
Shale		255	318						
Lime-Shale		318	360						
Sand		360	480	W - 395'					
Shale-Shells		480	535						
Slate		535	592						
Shale	grey	592	670						
Sand		670	682						
Shale		682	785						
Salt Sand		785	935	W - 820'	Hole full				
Sand-Shale		935	1110						
Lime		1110	1122						
Pencil Cave		1122	1125						
Big Lime		1125	1312	Gas 1366'					
Injun Sand		1312	1474	W 1458'					
Shale-Shells		1474	1895						
Shale	brown	1895	1924						
Berea Grit		1924	1940	Oil & Gas	Show at 1930'				
Shale-Shells		1940	2285	Gas 1935'					
Shale	brown	2285	2430						
Shale	grey	2430	2490						
Shale	brwn.	2490	2770						
Shale	white	2770	2960						
Shale	brwn.	2960	3001						
Niagara Lime		3001	3757	S.L.M.	Sulphur Water at 3105'				
					Poison gas at 3295'				
					Poison gas at 3267'				
Bottom of hole			3757						
Oriskany	not present								
Newburg		3606	3615	at 3665-90					
Keefe		3751	3757	6'					