

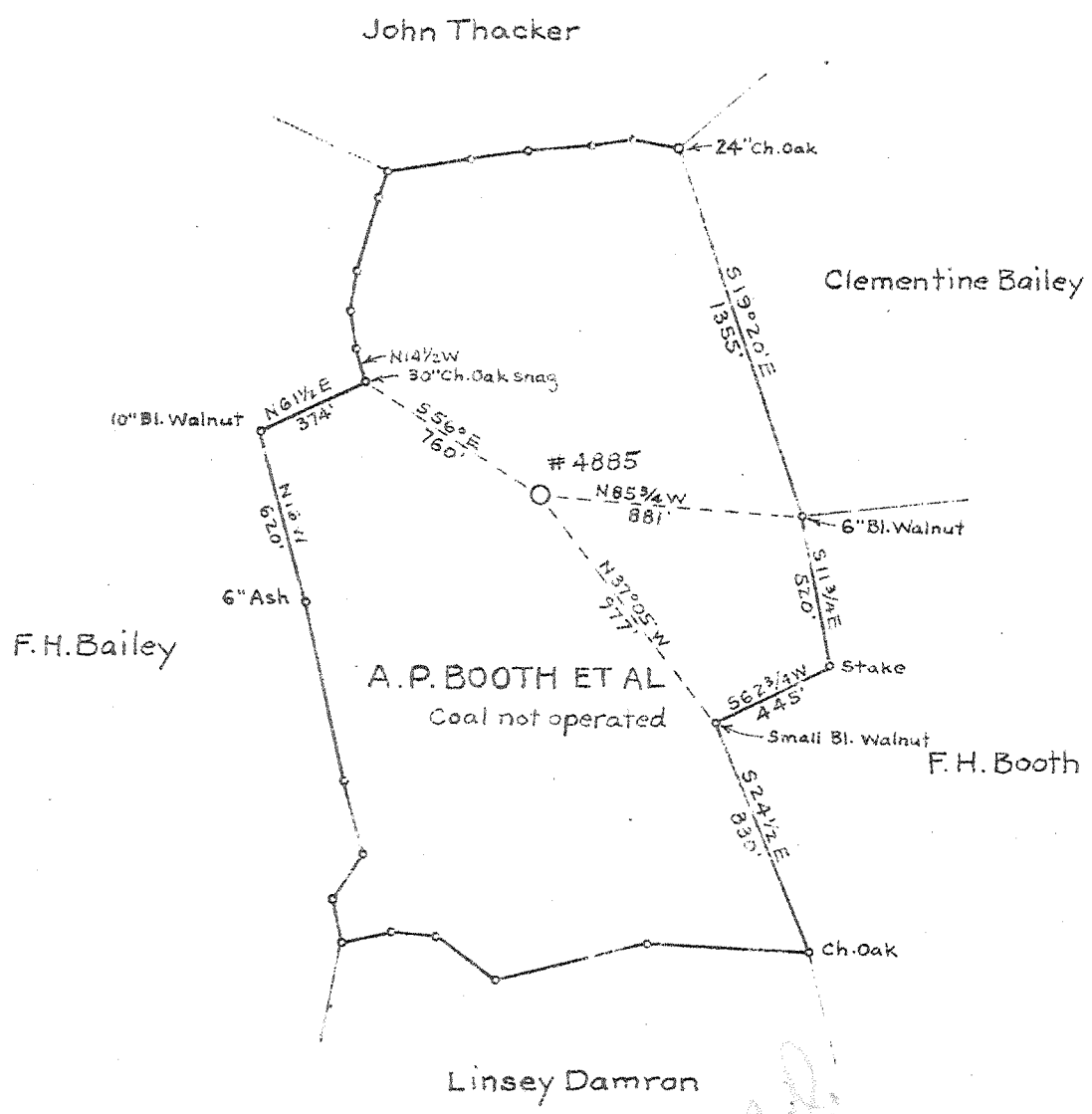
M

Latitude 38 15

Longitude 82 25



75.56 S
98 W



Recd.
9/40

3.10 W
0.58 S

New Location X
 Drill Deeper
 Abandonment

Vol. III, p. 691

Company	UNITED FUEL GAS CO.
Address	CHARLESTON, W.VA.
Farm	A. P. BOOTH ET AL
Tract	Acres 92 Lease No. 21387
Well (Farm) No.	1 Serial No. 4885
Elevation (BAROMETER)	755
Quadrangle	WAYNE <i>nm</i>
County	WAYNE District UNION
Engineer	
Engineer's Registration No.	659
File No.	16-51 Drawing No.
Date	MAY 22, 1940 Scale 1" = 660'

STATE OF WEST VIRGINIA
 DEPARTMENT OF MINES
 OIL AND GAS DIVISION
 CHARLESTON

WELL LOCATION MAP
 FILE NO. WAY-199

+ Denotes location of well on United States Topographic Maps, scale 1 to 62,500, latitude and longitude lines being represented by border lines as shown.
 - Denotes one inch spaces on border line of original tracing.

Samples (M. 17-A) (400-3891) Deep Well

A. P. BOOTH ET AL. NO. 1 (4885) WELL.

Union District, Wayne County, W. Va.

By United Fuel Gas Co., Charleston, W. Va.

Located 3.10 mi. W. of 82° 25' and 0.58 mi. S. of 38° 15' - NW - Wayne Quadrangle; 2 mi. N. W. of Wayne (town).

Elevation, 762.2' L.

Permit Way-199.

Drilling commenced June 8, 1940; completed, August 25, 1940.

10" casing, 16'; 8 $\frac{1}{4}$ " , 460'; 6 $\frac{3}{4}$ " , 167 $\frac{1}{4}$ '.

Well was shot both in the shales and in the "Corniferous Lime" without increasing the small shows of gas; abandoned as dry.

The well starts in the Conemaugh Formation about 215 feet (estimated from structure contour) below the Pittsburgh Coal. The driller's record is given for the interval from the surface to 400 feet and below that the record is based on samples, for most of which the depth is given only to the nearest ten feet.

Martens' record from samples.

Top. Bottom. Thickness.

CONEMAUGH FORMATION, 323+ FEET

0 -	16	16	Conductor
16 -	35	19	Clay, yellow
35 -	130	95	Slate
130 -	150	20	Red rock
150 -	240	90	Slate
240 -	323	83	Sand

ALLEGHENY AND POTTSVILLE FORMATIONS, 844 FEET

323 -	330	7	Coal (Upper Freeport)
330 -	365	35	Slate
365 -	400	35	Sand
400 -	570	170	Sandstone, very light gray to slightly greenish; contains muscovite, biotite, chlorite, and carbonaceous matter; calcareous from 450 to 470' and 530 to 550'; micaceous minerals and coaly material are partly concentrated in thin streaks (1 bailer of water per hour at 475')
570 -	610	40	Shale, gray, silty, micaceous
610 -	670	60	Sandstone, light-gray, fine, micaceous; mostly somewhat shaly, but especially so in top 10 feet; contains thin streaks of coal
670 -	700	30	Shale, gray, very silty, micaceous
700 -	760	60	Sandstone, light-gray, fine (show of oil at 715')
760 -	850	90	Siltstone and shale, gray; in some samples also includes considerable amount of very fine sandstone
850 -	870	20	Sandstone, light-gray, very fine
870 -	900	30	Sandstone, light-gray, very fine, shaly, 60%; darker gray shale and siltstone, 40%
900 -	920	20	Shale, gray
920 -	1030	110	Sandstone, white, medium-grained, nearly all quartz; mostly broken up into individual grains, many of which have crystal faces full of water at 935')
1030 -	1050	20	Sandstone, white, coarse
1050 -	1070	20	Sandstone, gray, fine
1070 -	1167	97	Sandstone, white, medium-grained, nearly all quartz; coarser from 1140 to 1167'

MAUCH CHUNK GROUP, 23 FEET

1167 -	1180	13	Limestone, brownish-gray, 60%; greenish-gray shale, 40%
1180 -	1190	10	Shale, gray, soft (driller's record gives "red rock" from 1184 to 1186'; this does not show in samples)

(OVER)

Top. Bottom. Thickness.

Top.	Bottom.	Thickness.	
GREENBRIER LIMESTONE, 210 FEET			
1190	- 1230	40	Limestone, dark-gray to dark-brown, with some soft gray to green shale
1230	- 1290	60	Limestone, very light brown to nearly white
1290	- 1320	30	Limestone, very light brown, moderately sandy
1320	- 1330	10	Limestone, white, oolitic
1330	- 1340	10	Limestone, nearly white, not oolitic, somewhat dolomitic (sample probably out of place)
1340	- 1350	10	Limestone, white, oolitic
1350	- 1360	10	Limestone, nearly white, very fine textured
1360	- 1380	20	Limestone, light-brown, oolitic, somewhat sandy
1380	- 1400	20	Limestone, light-gray and light-brown, dolomitic; contains some sand
POCONO FORMATION, 630 FEET			
1400	- 1470	70	Sandstone, gray, very fine; a very few rounded coarse sand grains, 1450 to 1470'
1470	- 1500	30	Sandstone, gray, very fine, almost a siltstone; contains a few fossil shells
1500	- 1510	10	Shale, gray
1510	- 1560	50	Sandstone, gray, very fine; contains a few fossil shells (1½ bailers water per hour at 1560')
1560	- 1610	50	Siltstone, gray
1610	- 1940	330	Shale, gray, silty, micaceous; interbedded with small amounts of lighter gray siltstone and very fine sandstone; the shale and associated siltstone and sandstone contain flakes of both biotite and muscovite and small pieces of coal or related carbonaceous matter
1940	- 2005	65	Siltstone, gray, 60 to 80%; gray shale, 40 to 20%; considerable very fine sandstone is included with the siltstone
2005	- 2024	19	Shale, dark-gray to black (Sunbury Shale)
2024	- 2030	6	Sandstone, nearly white, fine to very fine, partly pyritic (Berea Sandstone; position of top from driller's record)
DEVONIAN SHALES, 1110 FEET.			
2030	- 2110	80	Siltstone, gray and brown, 60 to 80%; gray shale, 40 to 20%; much of the material included under siltstone is nearly or quite coarse enough to be called sandstone (show of oil, 2030-2038')
2110	- 2120	10	Shale, gray, with small amount of brown siltstone
2120	- 2130	10	Siltstone, brown and gray, shaly, 70%; gray shale, 30%
2130	- 2140	10	Shale, gray, with small amount of siltstone as above
2140	- 2148	8	Siltstone, gray and brown, shaly
2148	- 2230	82	Shale, very dark gray to black; mostly silty
2230	- 2280	50	Shale, dark-gray, 80%; medium-gray shale, 20%
2280	- 2370	90	Shale, medium-gray; also small amounts of siltstone and dark-gray shale
2370	- 2540	170	Shale, very dark gray to black, mostly silty and micaceous; some portions contain small brown spores of waxy appearance
2540	- 2560	20	Shale, medium-gray
2560	- 2810	250	Shale, very dark gray to black; some fragments contain yellow to brown spores (show of gas at 2700 to 2840')
2810	- 2900	90	Shale, black; mostly somewhat brownish when wet contains abundant brown spores; also small amounts of pyrite and fragments of pyrite con

Top.	Bottom.	Thickness.	
2900	- 3020	120	Shale, gray to grayish-green; some calcareous material throughout and a little fine-textured limestone, 2960 to 2970'
3020	- 3070	50	Shale, gray to grayish-green, somewhat calcareous, 70%; dark-gray to black shale, 30%
3070	- 3140	70	Shale, dark-gray and dark-brown to black, pyritic, partly calcareous
			HELDREBERG LIMESTONE, 140 FEET
3140	- 3160	20	Limestone, brown, very cherty, somewhat dolomitic; sample from 3143 to 3150' is nearly all chert; chert is brown to light-gray
3160	- 3205	45	Limestone, light-brown to very light yellowish gray, cherty, slightly dolomitic; most of chert is nearly white and translucent
3205	- 3245	40	Limestone, nearly white, cherty, somewhat dolomitic; contains small to moderate amount of very fine angular quartz sand; slight trace of glauconite, 3230-3235' (bad gas, 3245')
3245	- 3250	5	Limestone, very sandy, dolomitic; sand grains are mostly fine; well rounded, and frosted
3250	- 3275	25	Limestone, brownish-gray, cherty, and silty; contains some dolomite and glauconite; except in top 5 feet chert is mostly very impure; a few rounded sand grains, 3270 to 3275'
3275	- 3280	5	Limestone, gray, highly fossiliferous; contains considerable amount of pyrite, some chert, silt, and dolomite, and a few rounded sand grains
			SALINA FORMATION, ETC., 597 FEET.
3280	- 3305	25	Limestone, light-brown, very fine textured; contains oolites or small round bodies resembling them; contains small amount of dolomite
3305	- 3335	30	Dolomite, brownish-gray, becoming browner toward bottom; not quite so fine as the limestone above; solution from acid treatment has dark-brown material in suspension
3335	- 3370	35	Dolomite, brown (water, 3363', $\frac{1}{2}$ bailer per hour)
3370	- 3400	30	Dolomite-anhydrite rock, brown; contains about 30-40% of anhydrite, mostly white
3400	- 3410	10	Dolomite, brown, with some anhydrite
3410	- 3438	28	Dolomite, brown
3438	- 3511	73	Dolomite-anhydrite rock, brown and white
3511	- 3710	199	Dolomite, brown; mostly contains some anhydrite
3710	- 3720	10	Dolomite-anhydrite rock, brown, 80%; green shale, 20%
3720	- 3735	15	Dolomite, brown, with some anhydrite and green shale; similar to interval above but perhaps less anhydrite and shale
3735	- 3776	41	Dolomite, gray, with some brown, containing a little anhydrite; also about 10 to 20% of green shale and shaly dolomite
3776	- 3800	24	Dolomite, dark brownish gray; contains many small round objects which might be recrystallized oolites
3800	- 3861	61	Dolomite, brown to brownish-gray, mostly fine-granular; some fine sand, 3833-3838' (gas, 3834-3838', 26,000 cu. ft. per day when drilled) (gas, 3842-3847', 43,000 cu. ft. per day when drilled)

Top.	Bottom.	Thickness.	
3861	- 3877	16	Dolomite, grayish-brown; slightly sandy at top, becoming much more so toward bottom of interval; contains pyrite, partly in octahedral crystals CLINTON FORMATION, 14+ FEET
3877	- 3891	14	Sandstone, light-gray, very fine, slightly dolomitic; interbedded with some gray, silty, and dolomitic shale (<u>Keefer Sandstone</u>)
	3883		Total depth in driller's record

WEST VIRGINIA DEPARTMENT OF MINES
OIL & GAS DIVISION
W E L L R E C O R D

Permit No. Way-199
Wayne Quad.

Dry Hole

Company United Fuel Gas Co.
Address B. 1256, Charleston, W. Va.
Farm A. P. Booth, et al ACRES 92
Location Left Fork of Garrett Creek
Well No. 4885 ELEV. 755
District Union - Wayne County
Surface & Mineral Geraldine Booth, et al
Address Charleston, W. Va.
Commenced June 8, 1940
Completed Aug. 25, 1940
Shot 9-2 & 9-6-40 - Depth 3820 & 2562
Volume Dry Hole
Fresh Water 475
Salt Water 935 and 1560

CASING & TUBING

10	16	16
8-1/4	460	460
6-5/8	1674	1674

Coal at 323' 34"

Conductor	0	16	
Yellow Clay	16	35	
Slate	35	130	
Red Rock	130	150	
Slate	150	240	
Sand	240	323	
Coal	323	330	
Slate	330	365	
Sand	365	490	W 475 - 1 bailer
Slate	490	525	
Slate & Shells	525	700	
Gas Sand	700	750	Oil 715 - show
Slate & Shells	750	900	
Salt Sand	900	1167	W 935 - hole full
Slate	1167	1184	
Red Rock	1184	1186	
Slate	1186	1208	
Big Lime	1208	1407	
Injun	1407	1464	
Slate	1464	1510	
Lime	1510	1580	W 1560 - 1-1/2 bailer
Slate & Shells	1580	1933	
Lime	1933	1965	
Slate	1965	2005	
Brown Shale	2005	2024	
Berea	2024	2046	Oil 2030-2038 - show
Slate & Shells	2046	2148	
Brown Shale	2148	2228	
Slate	2228	2385	
Brown Shale	2385	2435	
Grey Shale	2435	2455	
Brown Shale	2455	2533	
White Slate	2533	2565	
Brown Shale	2565	2885	Gas 2700-2840 Show
Slate	2885	3075	Bad Gas 3245
Brown Shale	3075	3140	W 3363 - 1/4 bailer hr.
Corniferous	3140	3872	Gas 3834-3838 - 6/10 W 1"
Sandy Shale <i>Kiefer</i>	3872	3883	Gas 3842-3847 - 17/10 W 1"
Total Depth		3883	

3140
755

2385

57

2024

46

1407
232

652 1464
25.8 mcf
43.1 mcf

(Application for plugging has been submitted)

900
755

145