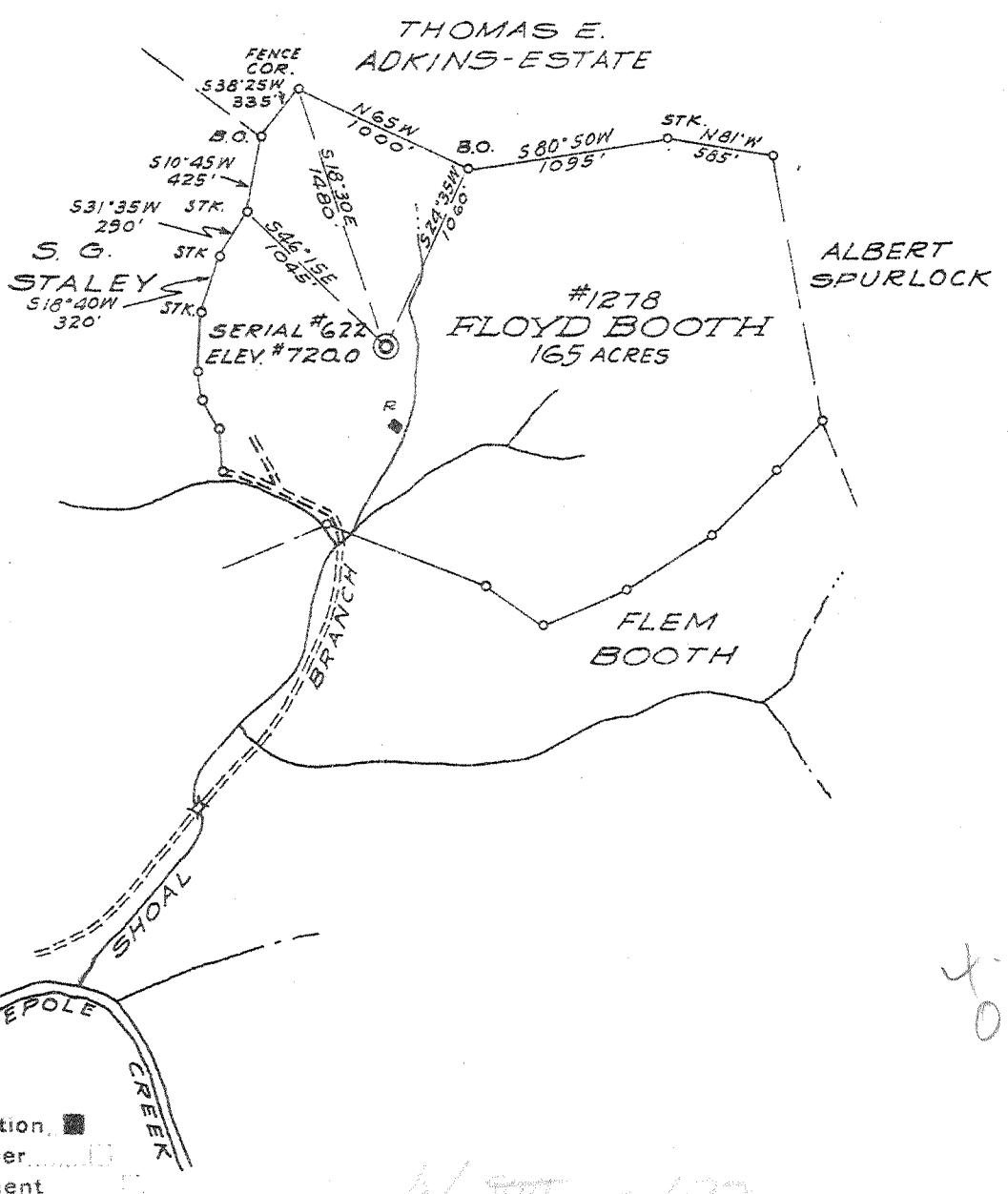


M

1 2 3

Latitude 38° 20'

Longitude 82° 25'



Company THE OWENS, LIBBEY-OWENS GAS DEPT.
 Address BOX 1375 CHARLESTON, W. VA.
 Farm FLOYD BOOTH
 Tract _____ Acres 165 Lease No. 1278
 Well (Farm) No. ONE Serial No. 622
 Elevation (Spirit Level) 720.0
 Quadrangle GUYANDOT SW
 County WAYNE District UNION
 Engineer T.S. Flannery
 Engineer's Registration No. 269
 File No. _____ Drawing No. _____
 Date SEPT. 15, 1941 Scale 1" = 1000 FT.

STATE OF WEST VIRGINIA
 DEPARTMENT OF MINES
 OIL AND GAS DIVISION
 CHARLESTON

WELL LOCATION MAP
 FILE NO. WAY-257

+ Denotes location of well on United States Topographic Maps, scale 1 to 62,500, latitude and longitude lines being represented by border lines as shown.

- Denotes one inch spaces on border line of original tracing.

6-2300 Deep Well

WEST VIRGINIA DEPARTMENT OF MINES
OIL & GAS DIVISION
W E L L R E C O R D

Permit No. Way-257

Gas Well

Guyandot Quad.

Company	The Owens, Libbey-Owens Gas Dept.,	Casing & Tubing
Address	Box 1375, Charleston, W. Va.	8½ 511 511
Farm	Floyd Booth Heirs Acres 165	6-5/8 1759 1759
Location	Shoal Branch of Twelve Pole	3 3318 3318
Well No.	622 Elev. 720'	Packer-Oil Well Comb. Well
District	Union - Wayne County	and Anchor
Surface&Mineral	Floyd Booth Heirs, Wayne, W. Va.	Size 3"x 6-5/8"x 16"
Commenced	Sept. 15, 1941	Depth set 2196
Completed	Oct. 21, 1941	Perf. top 3272
Shot	10-20-41 Depth 2610-3339	Perf. bot. 3294
Volume	75,000CF	Perf. top 3178
Rock Pressure	570# 24 hrs.	Perf. bot 3201
Fresh Water	520'	
Salt Water	1071'	

Clay	yl	s	0	18	Slate	gy	s	1772	1935
Red Clay	rd	s	18	23	Slate&Shells	gy	s	1935	1983
Sand	gy	s	23	28	Shells	dk	s	1983	2029
Slate	gy	s	28	60	Slate&Shells	d	s	2029	2069
Red Rock	rd	s	60	70	Slate	gy	s	2069	2084
Slate	gy	s	70	81	Shell	gy	h	2084	2130
Red Rock	rd	s	81	125	Slate	gy	s	2130	2158
Slate	gy	s	125	150	Shale	bn	s	2158	2173
Red Rock	rd	s	150	180	Berea	gy	h	2173	22010/s2184
Slate	gy	s	180	207	Shells	gy	h	2201	2236
Red Rock	rd	s	207	237	Slate&Shells	dk	s	2236	2453
Slate	gy	s	237	354	Slate&Shell	gy	s	2453	2597
Sand	wh	s	354	359	Shell	dk	h	2597	2615
Slate	gy	s	359	381	Slate&Shell	dk	s	2615	2637
Sand	wh	s	381	420	Shale	bn	s	2637	2720
Slate	gy	s	420	511	Slate&Shell	gy	s	2720	2743
Sand	wh	s	511	562	FW520-1B				
Slate	dk	s	562	572	Slate	gy	s	2743	2758
Sand	gy	s	572	592	Shale	bn	s	2758	2791
Slate	gy	s	592	637	Slate&Shell	dk	s	2791	2880
Sand	wh	s	637	675	Slate&Shell	gy	s	2880	2890
Slate	dk	s	675	691	Shale	bn	s	2890	2934
Sand	wh	s	691	751	Shale&Shells	dk	s	2934	29760/s2945
Slate	gy	s	751	814	Slate&Shell	gy	s	2976	2991
Sand	lt	m	814	835	Shale	bn	s	2991	3050
Slate	dk	s	835	880	Shale&Shell	bn	s	3050	3096
Sand	wh	s	880	915	Slate&Shell	gy	s	3096	3217
Slate	dk	s	915	920	Slate	gy	s	3217	3283
Sand	wh	s	920	948	Shale	dk	s	3283	3295
Slate	gy	s	948	1003	Shale	bn	s	3295	3341
Sand	gy	h	1003	1015	Gas			3310	1730F
Slate	dk	s	1015	1021	Gas			3334	300CF
Salt Sand	gy	s	1021	1152	Corniferous	dk	h	3341	3346
Slate	dk	s	1152	1166	Total Depth				3346
Sand	lt	h	1166	1174	SW1071HF				
Slate	gy	s	1174	1179					
Sand	lt	h	1179	1183					
Lime	gy	h	1183	1200					
Salt Sand	gy	h	1200	1321					
Slate	lt	s	1321	1339					
Sand	gy	h	1339	1377					
Slate	dk	s	1377	1380					
Shells	lt	h	1380	1387					
Big Lime	wh	h	1387	1443					
Sand	wh	h	1443	1446					
Big Lime	wh	h	1446	1573					
Big Injun	gy	h	1573	1715					
Slate	gy	s	1715	1718					
Sand	gy	h	1718	1723					
Slate&Shells	dk	s	1723	1748					
Lime Shell	dk	h	1748	1759					
Shells	dk	s	1759	1769					
Slate&Shells	gy	s	1769	1772					

3341
720

2621

1200
1200

350

1573
1715

1342

1442