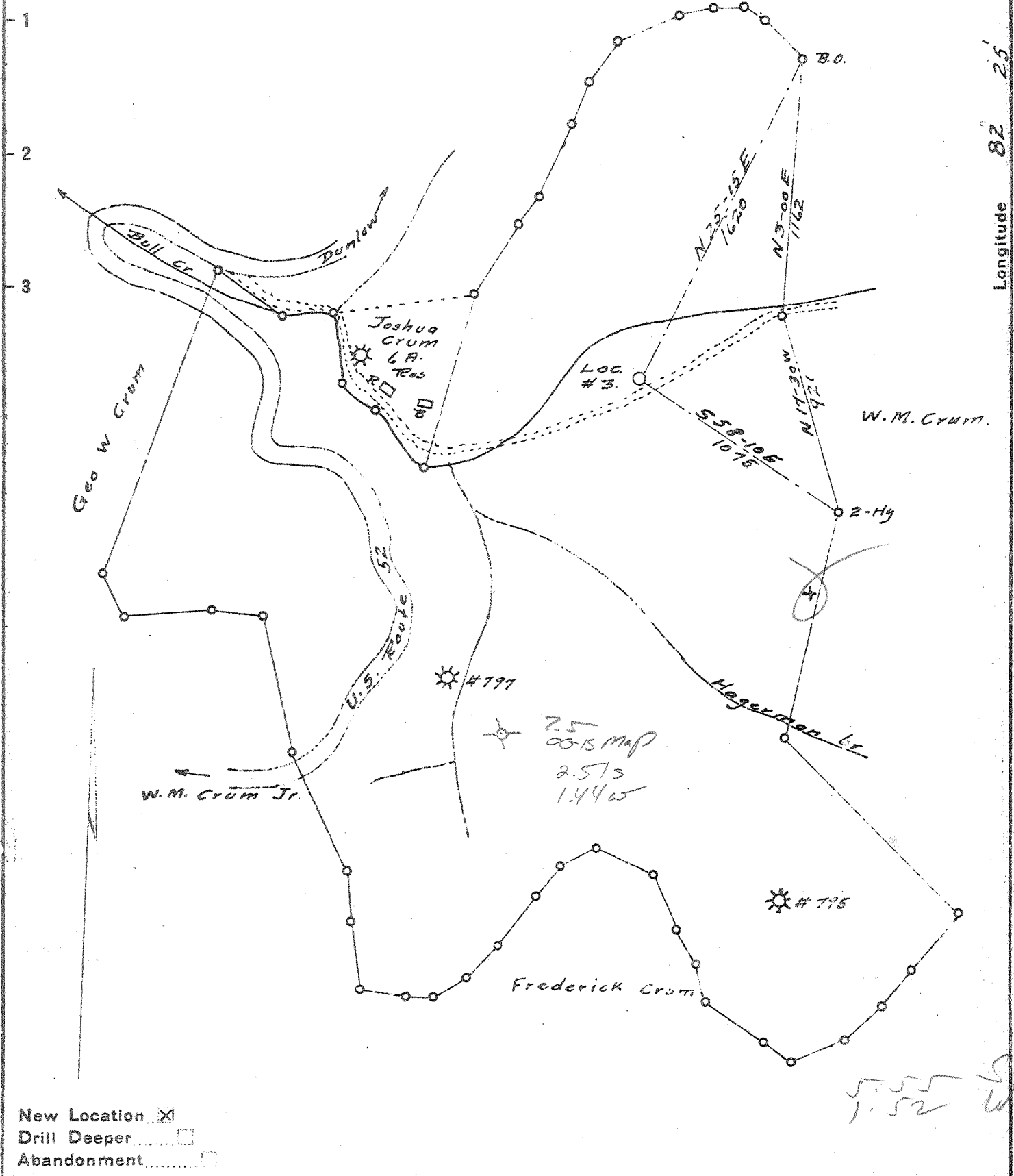


1 2 3

Latitude 38-00'  
37° 57' 30"

Longitude 82-25'



New Location    
 Drill Deeper    
 Abandonment

Company SOUTHEASTERN GAS CO.  
 Address CHARLESTON, W. VA.  
 Farm Sarah E. Fuller  
 Tract \_\_\_\_\_ Acres 207 Lease No. 2463  
 Well (Farm) No. 3 Serial No. 800  
 Elevation (Spirit Level) 622  
 Quadrangle Naugatuck N.W.  
 County Wayne District Lincoln  
 Engineer Towasel Combs  
 Engineer's Registration No. (Ky) 465  
 File No. \_\_\_\_\_ Drawing No. \_\_\_\_\_  
 Date Dec. 11, 1942 Scale 1" = 600'

STATE OF WEST VIRGINIA  
 DEPARTMENT OF MINES  
 OIL AND GAS DIVISION  
 CHARLESTON

**WELL LOCATION MAP**  
 FILE NO. Way-275

+ Denotes location of well on United States Topographic Maps, scale 1 to 62,500, latitude and longitude lines being represented by border lines as shown.  
 - Denotes one inch spaces on border line of original tracing.

WEST VIRGINIA DEPARTMENT OF MINES  
OIL & GAS DIVISION  
W E L L R E C O R D

Permit No. Way 275  
Naugatuck Quad.

Gas well  
CASING & TUBING

Company Southeastern Gas Co.  
Address Box 2347, Charleston, W.Va.  
Farm Sarah E. Fuller Acres 207  
Location Bull Creek  
Well No 800 Elev. 622'  
District Lincoln Wayne County  
Surface Sarah E. Fuller, 1249 Fifth Ave.  
Huntington, W.Va.  
Mineral Sarah E. Fuller et al  
Commenced Jan. 14, 1943  
Completed April 3, 1943  
Date shot March 17, 1943 Depth 2175' to 2675'  
with 5400# Gelatin  
Open flow 4/10ths W in 2"  
Volume 84,000 C.F.  
Rock Pressure 366 lbs. 72 hrs.  
Oil None  
Fresh Water 35' H.F.; 505' H.F.; 530'

13	20.7	20.7
10	190'.7	190.7
8½	392	
6 5/8	1126	1126
5 3/16	557	557

O.W.S. Packer -Bottom  
Hole  
Size 6 5/8 x 17"  
Depth 1126'  
Coal at 28' 2"

Surface	0	21
Sand	21	25
Slate	25	28
Coal	28	30
Slate	30	40
Sand	40	55
Slate	55	100
Sand	100	110
Slate	110	125
Sand	125	155
Dark Slate	155	208
White Sand	208	250
White Slate	250	265
Slate	265	300
Slate	300	380
Sand	380	435
Slate	435	439
Salt Sand	439	620
Sand	630	755
Gritty Shell	755	770
Light Slate	770	785
Maxon Sand	785	822
Black Slate	822	880
Red Rock	880	886
Shell	886	888
White Slate	888	907
Red Rock	907	922
White Slate	922	950
Red Rock	950	960
Slate	960	990
Slate & Shells	990	1051
Pencil Cave	1051	1069
Black Lime	1069	1099
Big Lime	1099	1284
Injun Sand	1284	1340
Slate & Shells	1340	1790
Brown Shale	1790	1820
Berea Grit	1820	1827
Berea Shells	1827	1916
White Slate	1916	1934
Brown Shale	1934	2018
White Slate	2018	2178
Brown Shale	2178	2345
White Slate	2345	2400
Brown Shale	2400	2430
Dark Slate	2430	2457
Brown Shale	2457	2670
White Slate	2670	2675
TOTAL DEPTH		2675

Gas at 295'

S.L.M. 1119'

Gas 1215-16' 1/10 W 2"; Gas 1223-30  
5/10 W 2"

Gas 2198-2205 12/10 W 1"  
Gas 2295-2300' 14/10 W 1"  
Gas 2415-2420' 17/10 W 1"

Note: Big Lime acidized  
No increase