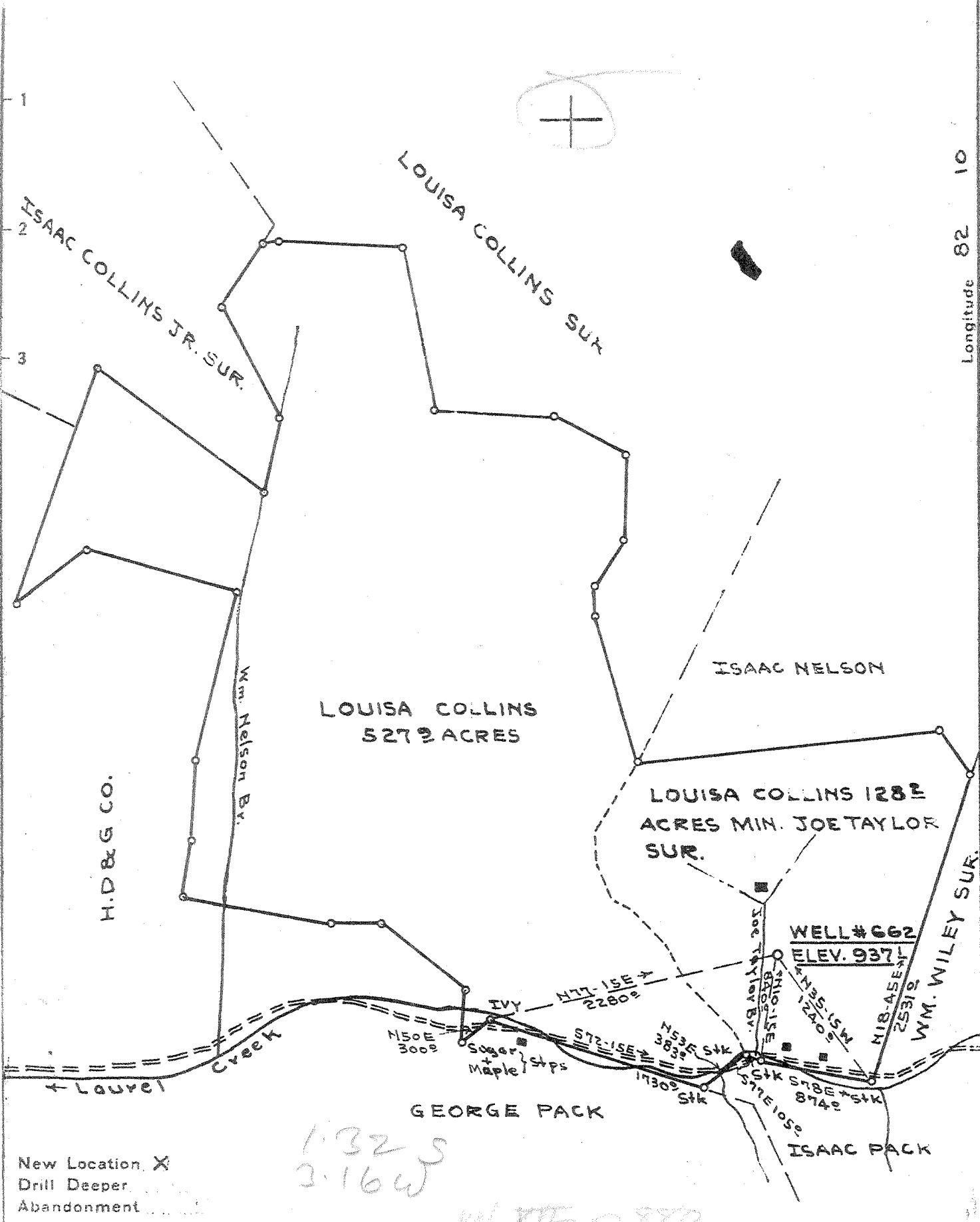


m

p

Latitude 38 05

Longitude 82 10



1325  
3164

New Location, X  
Drill Deeper  
Abandonment

Company	THE OWENS, LIBBEY-OWENS GAS
Address	BOX 2111, CHARLESTON, W.VA.
Farm	LOUISA COLLINS
Tract	Acres 711 1/2 Lease No. 1205
Well (Farm) No.	1 Serial No. 662
Elevation (Spirit Level)	937'
Quadrangle	MIDKIFF SW
County	WAYNE District GRANT
Engineer	T. S. F. Journey
Engineer's Registration No.	269
File No.	Drawing No.
Date	MAY 17, 1943 Scale 1" = 1000 FT.

STATE OF WEST VIRGINIA  
DEPARTMENT OF MINES  
OIL AND GAS DIVISION  
CHARLESTON

WELL LOCATION MAP  
FILE NO. WAY-285

+ Denotes location of well on United States Topographic Maps, scale 1 to 62,500, latitude and longitude lines being represented by border lines as shown.

- Denotes one inch spaces on border line of original tracing.

Deep Well

WEST VIRGINIA DEPARTMENT OF MINES  
OIL & GAS DIVISION  
W E L L R E C O R D

Permit No. Way 285		Gas Well
Midkiff Quad.		CASING & TUBING
Company	The Owens, Libbey-Owens Gas Dept.	
Address	P.O. Box 2111, Charleston 28, W.Va.	8 1/2 235 235
Farm	Louisa Collins Acres 711.1	6 5/8 1586 1584
Location	Branch Laurel Creek	3 3820 3820
Well No	662 Elev. 937.1	
District	Grant Wayne County	OWS Wall-Anchor Packer
Surface	Joe Taylor Heirs, Wewanta, W.Va.	Size 3" x 6 5/8" x 16"
Mineral	Mrs. Louisa Collins, 544 Bridge St., Huntington, W.Va.	Depth 3045-3040
Commenced	June 3, 1943	Perf. top 3253
Completed	July 31, 1943	Perf. bot 3276
Date shot	8-2-43	Perf. top 3298
Volume	222,000 C.F.	8-2-43 Depth 3164 to 3847 with 6600# Detonite. Perf. Bot
Rock Pressure	517 lbs. 39 hrs.	3318-
Salt Water	950' 4 blrs. pr. hr.; 1015' H.F.	3341-3363
		Coal at 56' 48"; 205' 36"

Clay	Lt	S	0	14	Slate & Shells Dk	H	2379	2506
Sand	Lt	H	14	20	Slate & Shells Lt	M	2506	2622
Slate	Dk	S	20	56	Slate	Wh	2622	2685
Coal	Bk	S	56	60	Slate	Dk	2685	2857
Sand	Wh	S	60	145	Slate & Shells Lt	M	2857	2888
Slate	Lt	S	145	151	Slate	Dk	2888	2951
Slate	Dk	S	151	205	Shell	Lt	2951	2959
Coal	Bk	S	205	208	Slate	Dk	2959	2994
Slate	Dk	S	208	215	Slate & Shell Dk	M	2994	3040
Sand	Wh	S	215	250	Shell	Wh	3040	3061
Slate	Dk	S	250	285	Slate & Shell Dk	M	3061	3150
Sand	Wh	S	285	326	Shale	Br	3150	3169
Slate	Lt	S	326	338	Slate & Shell Dk	M	3169	3195
Sand	Lt	S	338	337	Shale	Br	3195	3250
Slate	Lt	S	387	400	Lime Shell	Dk	3250	3257
Sand	Wh	S	400	426	Shale	Dk	3257	3270
Slate	Dk	S	426	445	Shell	Dk	3270	3284
Sand	Wh	S	445	474	Slate & Shell Dk	M	3284	3306
Slate	Lt	S	474	585	Shale	Br	3306	3326
Sand	Lt	M	585	615	Shell	Lt	3326	3334
Slate	Dk	S	615	635	Slate & Shell Lt	M	3334	3364
Sand	Wh	H	635	695	Shale	Dk	3364	3416
Slate	Dk	S	695	712	Shell	Lt	3416	3425
Sand	Wh	M	712	793	Shale	Dk	3425	3461
Slate	Dk	S	793	836	Slate & Shells Lt	M	3461	3601
Sand	Wh	S	836	884	Shell	Dk	3601	3616
Slate	Wh	S	884	894	Slate	Lt	3616	3624
Sand	Wh	H & M	894	1040	Slate & Shells Lt	M	3624	3704
Slate	Dk	S	1040	1046	Shale	Dk	3704	3730
Sand	Wh	M	1046	1136	Slate & Shells Lt	M	3730	3751
Sand	Wh	H	1136	1166	Shale	Dk	3751	3843
Slate	Dk	S	1166	1234	Corniferous	Dk	3843	3847
Sand	Wh	H	1234	1256	TOTAL DEPTH			3847
Slate	Wh	S	1256	1278				
Sand	Wh	H	1278	1286	Gas 460' Small show			
Slate	Dk	S	1286	1297	Gas 650' Small Show			
Slate & Shell Dk	S		1297	1336	Gas 3260' 47,000 C.F.			
Slate	Dk	S	1336	1342	Gas 3418' 32,000 C.F.			
Sand	Wh	H	1342	1522				
Big Lime	Dk	H	1522	1762				
Big Injun Sand	R	H	1762	1789				
Slate & Shells Dk	M		1789	2014				
Shells	Dk	H	2014	2111				
Slate & Shells Dk	M		2111	2180				
Slate & Shells Lt	S		2180	2285				
Shells	Lt	H	2285	2293				
Slate	Lt	S	2293	2295				
Slate & Shells Dk	M		2295	2333				
Shale (Sunberry)	Br	S	2333	2356				
Berea Shell Lt	H		2356	2360				
Slate & Shells Lt	S		2360	2379				