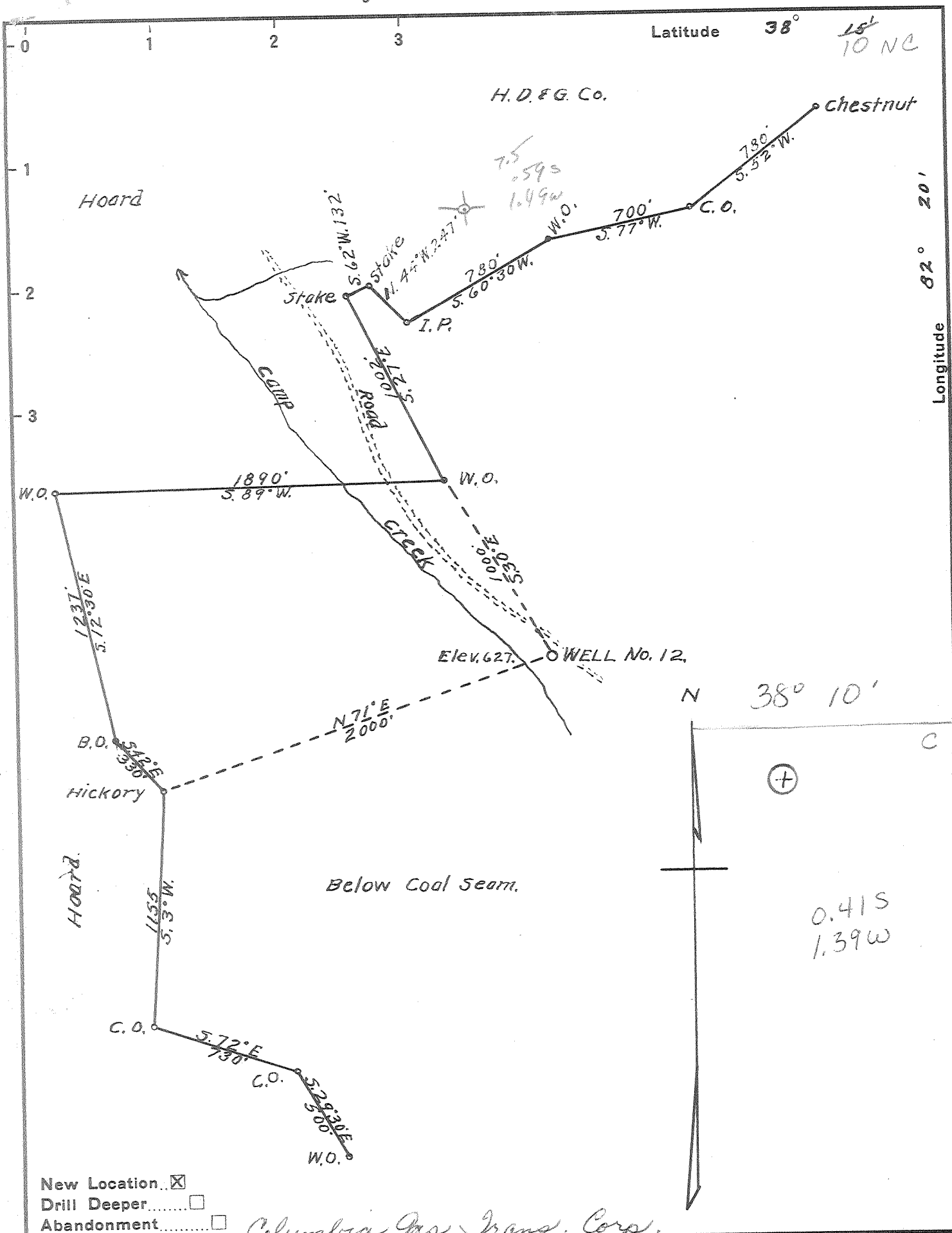


Latitude  $38^{\circ} 15' 10''$  N



- New Location
- Drill Deeper
- Abandonment

*Columbia Gas Trans. Corp.*

Company ~~PRIDDIE OIL & GAS CO.~~  
 Address ~~HUNTINGTON, W.VA.~~  
 Farm BURGESS ADKINS  
 Tract 1 Acres 2200 Lease No. 1  
 Well (Farm) No. 12 Serial No. 9818  
 Elevation (Spirit Level) 627'  
 Quadrangle WAYNE C / NC  
 County WAYNE District STONEWALL  
 Engineer J. A. Doss  
 Engineer's Registration No. \_\_\_\_\_  
 File No. \_\_\_\_\_ Drawing No. \_\_\_\_\_  
 Date 12-28-44 Scale 1" = 600'

STATE OF WEST VIRGINIA  
 DEPARTMENT OF MINES  
 OIL AND GAS DIVISION  
 CHARLESTON

**WELL LOCATION MAP**  
 FILE NO. WAY-366-PP

+ Denotes location of well on United States Topographic Maps, scale 1 to 62,500, latitude and longitude lines being represented by border lines as shown.

- Denotes one inch spaces on border line of original tracing.

**47-099**

*Deep well*



P

WEST VIRGINIA DEPARTMENT OF MINES  
OIL & GAS DIVISION  
W E L L R E C O R D

Permit No. Way 366  
Wayne Quad. *C*  
Company  
Address  
Farm  
Well No.  
Surface  
Mineral  
Location  
District  
Commenced  
Completed  
Date shot

Priddie Oil & Gas Company

Burgess Adkins Acres  
12 Elev.

Waters of Camp Creek  
Union Wayne County  
Feb. 29, 1945  
April 10, 1945

5600 lbs. of Gelatin-top shot 2320'  
bot shot 3078

Gas Well  
CASING & TUBING

8 165'8  
6 5/8 1090'  
10 41'9"  
3/4" tubing 1363'

\*  
(Left in Hole  
above materials)

Surface	0	30
Slate	30	90
Sand	90	102
Slate	102	204
Slate & Shells	204	508
Slate	508	520
Sand	520	540
Slate	540	595
Salt Sand	595	925
Slate	925	930
Sand	930	970
Slate & Shells	970	1025
Bumbo	1025	1040
Little Lime	1040	1055
Pencil Cave	1055	1060
Big Lime	1060	1245
Red Rock	1245	1268
Injun Sand	1268	1320
Broken Sand	1320	1400
Slate & Shells	1400	1720
Coffee Shale	1720	1830
Berea Grit	1830	1834
Black Slate	1834	1902
Brown Shale	1902	1980
Light Shale	1980	2320
Brown Shale	2320	2450
White Shale	2450	2490
Brown Shale	2490	2778
Grey Shale	2778	3004
Brown Shale	3004	3078
Corniferous Lime	3078	3080
Bottom Of Hole	3080*	

Gas from 1285 to 1296 gauged 2/10 W  
through 2", increased to 4/10 W through  
2" from 1296 to 1308

Little gas at 2650

Hole Full of Water from 60 to 70'

Well finished 2' in corniferous Lime 3080'

*48 S 38°10'*  
*1.4 W 87°20'*

*Priddie*