

New Location
 Drill Deeper
 Abandonment 64/76

Company APPALACHIAN POWER CO
 Address P.O. Bx. 1906 Charleston, WV 25325
 Farm GUSSIE WILSON
 Tract _____ Acres 64 Lease No. _____
 Well (Farm) No. 1 Serial No. _____
 Elevation (Spirit Level) 910
 Quadrangle WAYNE NW
 County WAYNE District UNION
 Engineer G. L. Ewing
 Engineer's Registration No. 309
 File No. _____ Drawing No. _____
 Date 10-8-49 Scale 1"=400'

STATE OF WEST VIRGINIA
 DEPARTMENT OF MINES
 OIL AND GAS DIVISION
 CHARLESTON

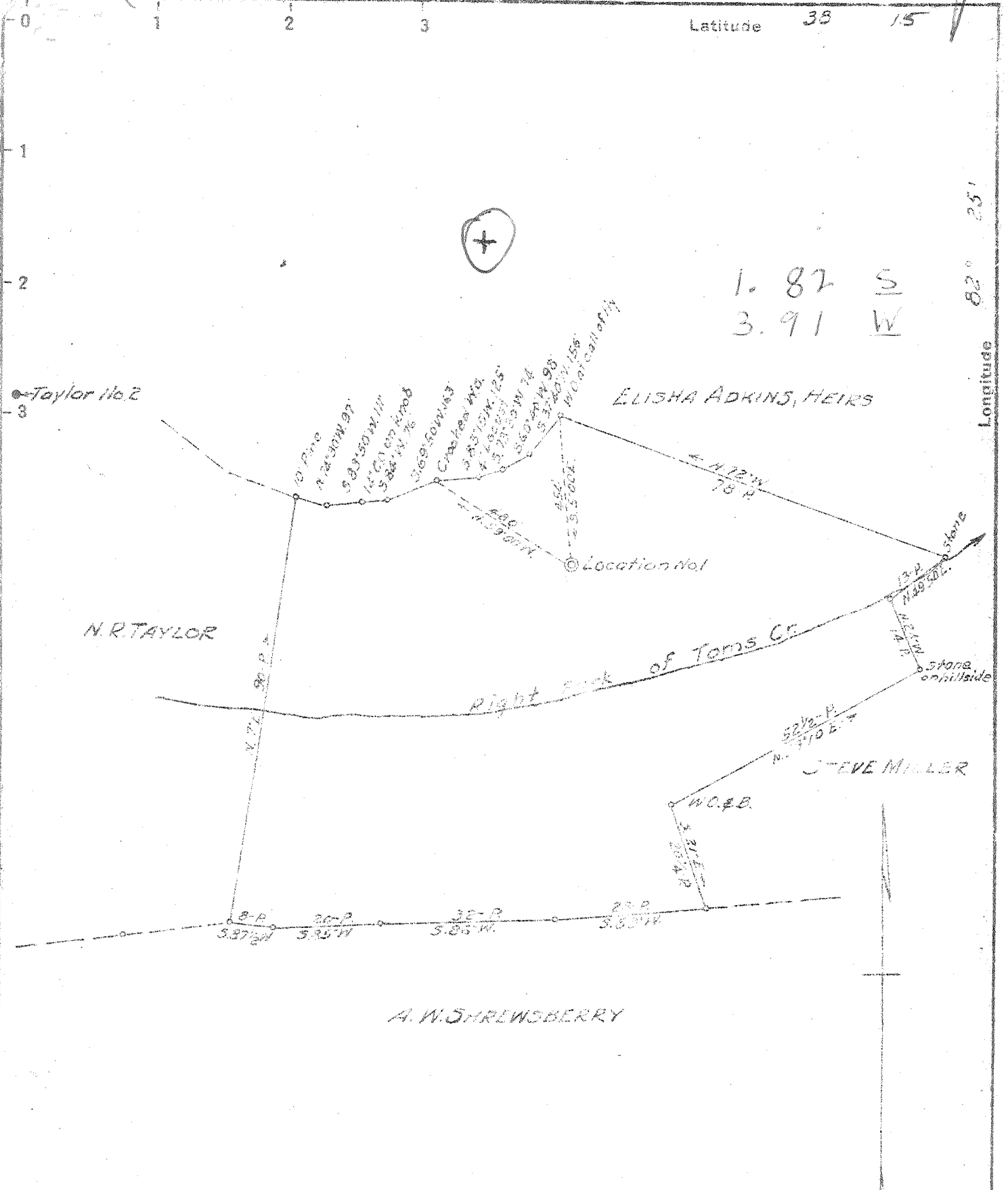
WELL LOCATION MAP
 FILE NO. WAY-701-P

+ Denotes location of well on United States Topographic Maps, scale 1 to 62,500, latitude and longitude lines being represented by border lines as shown.

- Denotes one inch spaces on border line of original tracing.

47-099 JUN 11 1976

Deep Well.



New Location
 Drill Deeper
 Abandonment

Company CHARTIERS OIL COMPANY
 Address PITTSBURGH PA.
 Farm GUSSIE WILSON
 Tract _____ Acres 64 Lease No. _____
 Well (Farm) No. 1 Serial No. _____
 Elevation (Spirit Level) 910
 Quadrangle WAYNE NW
 County WAYNE District UNION
 Engineer G. G. Ewing
 Engineer's Registration No. 309
 File No. _____ Drawing No. _____
 Date 10-8-49 Scale 1"=400'

STATE OF WEST VIRGINIA
 DEPARTMENT OF MINES
 OIL AND GAS DIVISION
 CHARLESTON

WELL LOCATION MAP
 FILE NO. WAY-701

+ Denotes location of well on United States Topographic Maps, scale 1 to 62,500, latitude and longitude lines being represented by border lines as shown.
 - Denotes one inch spaces on border line of original tracing.

6-6-229

Deep Well

WEST VIRGINIA DEPARTMENT OF MINES
OIL & GAS DIVISION
W E L L R E C O R D

Big Six
Gas Well

Permit No. Way 701
Wayne Quad.
Company
Address

Farm
Location
Well No.
District
Surface
Mineral
Commenced
Completed
Open Flow
Volume
Rock Pressure
Fresh water

The Chartiers Oil Co.
1518 Farmers Bk. Bldg.,
Pittsburgh, Pa.
Gussie Wilson . Acres 64
Toms Creek
1 Elev. 910
Union County Wayne
Gussie Wilson
Gussie Wilson
11/11/1949
1/26/50
36/10ths water in 2"
250 MCF
780 lbs. 24 hrs.
1790'

CASING & TUBING
13 wood 13' 13'
10 32# 269' 269'
8½ 24# 1371' 1371'
6-5/8 17# 2380' 2380'
5-3/16 17# 3600' 3600'
Midget packer 8-5/8"x10-3/4"
depth set 1371'
Casing cemented 5½" 1/8/50
Used 20 sacks cement.

Surface		0	14
Slate		14	150
Rock	Red	150	165
Slate		165	216
Coal		216	218
Slate		218	240
Sand		240	265
Slate		265	365
Sand		365	575
Slate		575	1050
Salt sand		1050	1290
Slate		1290	1335
Shale	Red	1335	1341
Slate-Shells		1341	1353
Little Lime		1353	1364
Pencil Cave		1364	1366
Big Lime		1366	1590
Injun Sand		1590	1730
Shale	Grey	1730	2165
Coffee Shale		2165	2194
Berea Grit		2194	2206
Shale Shells		2206	2550
Shale	Brown	2550	2810
Shale	White	2810	2835
Shale	Brown	2835	2930
Shale	White	2930	2945
Shale	Brown	2945	3035
Shale	White	3035	3219
Shale	Brown	3219	3270
Coniferous Lime		3270	4000
Bottom Hole		4000	

water 1075' hole full

SLM at 1371'

water 1790' 2 bailers

SLM at 2198'

oil 2198' Show
Hard shell, 2237' to 2242'

Water 3490' Black ½ bailer
per hour

3270
910

2360