

WW-7
8-30-06



West Virginia Department of Environmental Protection
Office of Oil and Gas
WELL LOCATION FORM: GPS

API: 47-099-00806 WELL NO.: 806826

FARM NAME: TCO MIN TR 1

RESPONSIBLE PARTY NAME: Core Appalachia Operating, LLC

COUNTY: Wayne DISTRICT: ~~Laurel Hill~~ STONEWALL

QUADRANGLE: Nestlow

SURFACE OWNER: Albert Clark c/o Lula Yeager

ROYALTY OWNER: Core Appalachia Production, LLC

UTM GPS NORTHING: 4222828.59m

UTM GPS EASTING: 386536.41m GPS ELEVATION: 283.70m [930.76']

The Responsible Party named above has chosen to submit GPS coordinates in lieu of preparing a new well location plat for a plugging permit or assigned API number on the above well. The Office of Oil and Gas will not accept GPS coordinates that do not meet the following requirements:

- Datum: NAD 1983, Zone: 17 North, Coordinate Units: meters, Altitude: height above mean sea level (MSL) – meters.
- Accuracy to Datum – 3.05 meters
- Data Collection Method:

Survey grade GPS : Post Processed Differential
Real-Time Differential

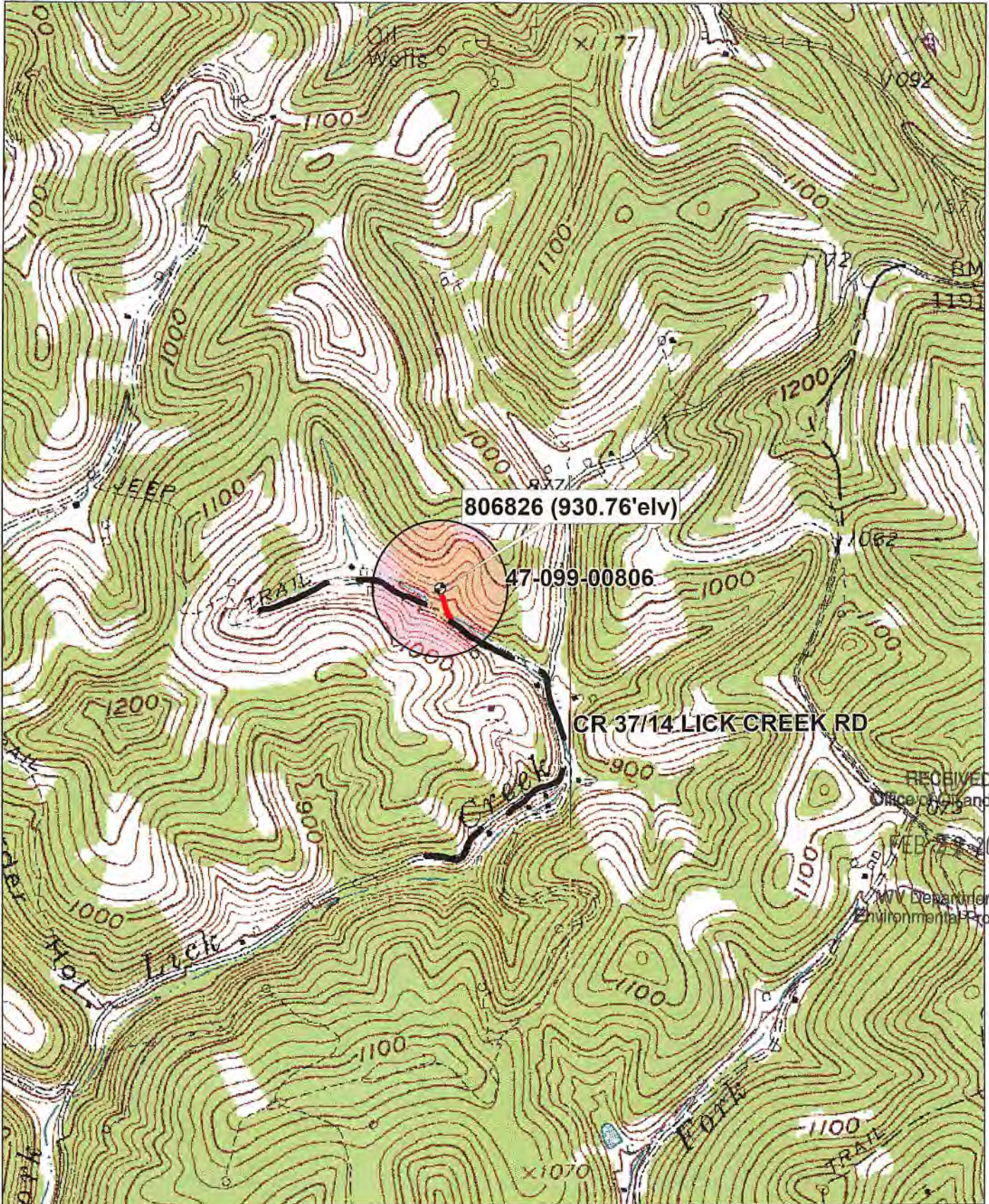
Mapping Grade GPS : Post Processed Differential
Real-Time Differential

- Letter size copy of the topography map showing the well location.

I the undersigned, hereby certify this data is correct to the best of my knowledge and belief and shows all the information required by law and the regulations issued and prescribed by the Office of Oil and Gas.

EHS Specialist 2/27/19
Signature Title Date

RECEIVED
Office of Oil and Gas
FEB 22 2019
WV Department of
Environmental Protection



806826 (930.76'elv)

47-099-00806

CR 37/14 LICK CREEK RD

RECEIVED
Office of Land and Gas
WEB 7/23/2019
MW Department of
Environmental Protection

WELL 806826 P&A TOPO MAP

Data use subject to license.

© DeLorme. XMap® 8.

www.delorme.com

