

WW-7
8-30-06



West Virginia Department of Environmental Protection
Office of Oil and Gas
WELL LOCATION FORM: GPS

API: 47-099-00811 WELL NO.: 806861

FARM NAME: TCO MIN TR 1

RESPONSIBLE PARTY NAME: Core Appalachia Operating, LLC

COUNTY: Wayne DISTRICT: Stonewall

QUADRANGLE: Kiahsville

SURFACE OWNER: US ARMY COE

ROYALTY OWNER: Core Appalachia Production, LLC

UTM GPS NORTHING: 4213519.36m

UTM GPS EASTING: 385625.43m GPS ELEVATION: 267.09m [876.27']

The Responsible Party named above has chosen to submit GPS coordinates in lieu of preparing a new well location plat for a plugging permit or assigned API number on the above well. The Office of Oil and Gas will not accept GPS coordinates that do not meet the following requirements:

1. Datum: NAD 1983, Zone: 17 North, Coordinate Units: meters, Altitude: height above mean sea level (MSL) – meters.
2. Accuracy to Datum – 3.05 meters
3. Data Collection Method:

Survey grade GPS ; Post Processed Differential

Real-Time Differential

Mapping Grade GPS : Post Processed Differential

Real-Time Differential

4. Letter size copy of the topography map showing the well location.

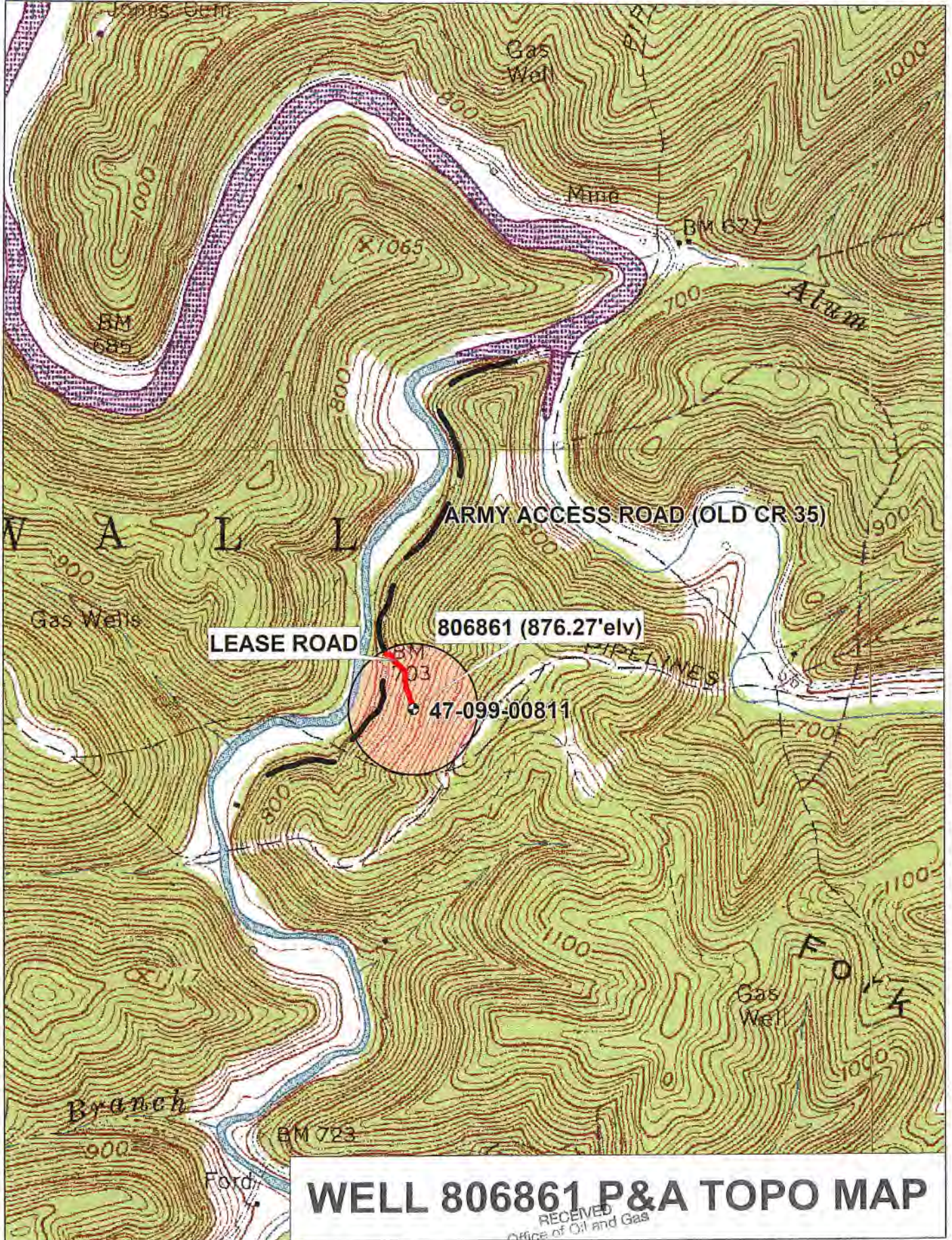
I the undersigned, hereby certify this data is correct to the best of my knowledge and belief and shows all the information required by law and the regulations issued and prescribed by the Office of Oil and Gas.

[Signature]
Signature

EHS Specialist
Title

2/22/19
Date

RECEIVED
Office of Oil and Gas
FEB 25 2019
WV Dep. ment of
Environmental Protection

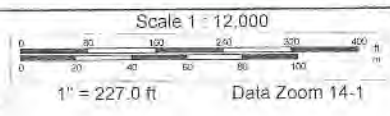


WELL 806861 P&A TOPO MAP

RECEIVED
Office of Oil and Gas

FEB 25 2019

Department of
Environmental Protection



Data use subject to license.

© DeLorme. XMap® 8.

www.delorme.com

