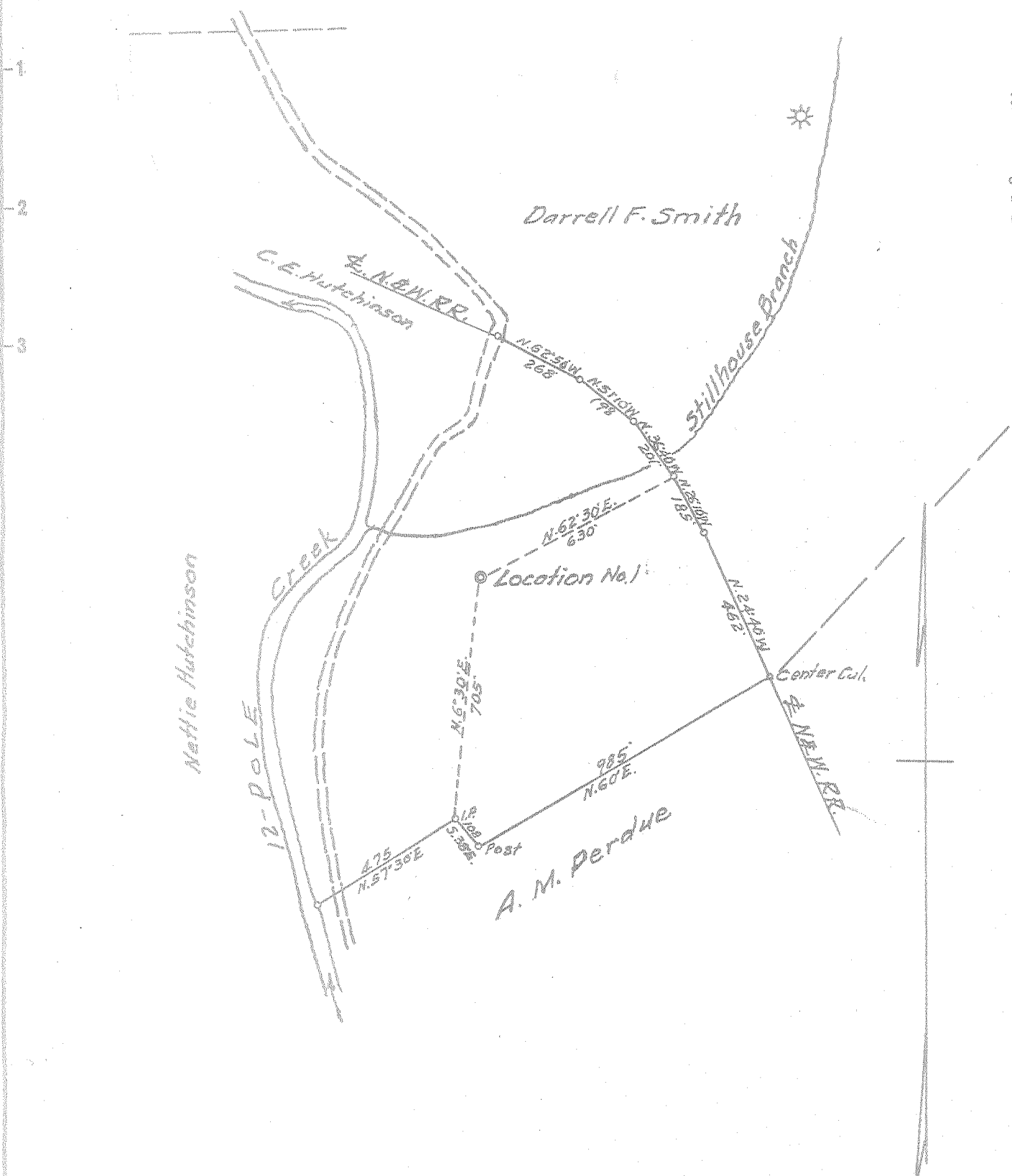


Latitude 38° 20'

Longitude 82° 25'



New Location   
 Drill Deeper   
 Abandonment

Company	<u>R. H. ADKINS</u>
Address	<u>HAMLIN, W. VA.</u>
Farm	<u>W. D. CARROLL</u>
Tract	Acres <u>42</u> Lease No. _____
Well (Farm) No.	<u>1</u> Serial No. _____
Elevation (Spirit Level)	<u>562</u>
Quadrangle	<u>GUYANDOT</u>
County	<u>WAYNE</u> District <u>UNION</u>
Engineer	<u>E. B. Ewing</u>
Engineer's Registration No.	<u>309</u>
File No.	_____ Drawing No. _____
Date	<u>8-25-54</u> Scale <u>1" = 400'</u>

STATE OF WEST VIRGINIA  
 DEPARTMENT OF MINES  
 OIL AND GAS DIVISION  
 CHARLESTON

**WELL LOCATION MAP**  
 FILE NO. WAY-937

+ Denotes location of well on United States Topographic Maps, scale 1 to 62,500, latitude and longitude lines being represented by border lines as shown.  
 - Denotes one inch spaces on border line of original tracing.

Deep Well 6-0 230



STATE OF WEST VIRGINIA  
DEPARTMENT OF MINES  
OIL AND GAS DIVISION 7

Quadrangle Guyandot

Permit No. Way - 937

WELL RECORD

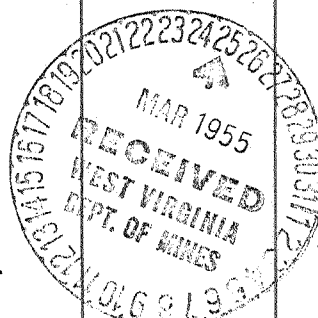
Oil or Gas Well Gas  
(KIND)

Company Geneva Gas Company  
Address Hamlin, W. Va.  
Farm W. D. Carroll Acres 40  
Location (waters) Twelve Pole Creek  
Well No. 2 Elev. 562'  
District Union County Wayne  
The surface of tract is owned in fee by W. D. Carroll  
Address Hamlin, W. Va.  
Mineral rights are owned by Same  
Address \_\_\_\_\_  
Drilling commenced September 14, 1954  
Drilling completed November 15, 1954  
Date Shot 11-11 From 2432' To 2986  
With 2250 # Detonite 4200 Lb. Gel.  
Open Flow /10ths Water in \_\_\_\_\_ Inch  
10 /10ths Merc. in 3" Inch  
Volume 1,200 Cu. Ft.  
Rock Pressure 350 lbs. 72 hrs.  
Oil \_\_\_\_\_ bbls., 1st 24 hrs.  
Fresh water \_\_\_\_\_ feet  
Salt water \_\_\_\_\_ feet

Casing and Tubing	Used in Drilling	Left in Well	Packers
Size			
16			Kind of Packer
13			
10		40'6"	Size of
8 1/2		178'7"	
6 3/4		1992	Depth set
5 3/16			
3		2747	Perf. top
2			Perf. bottom
Liners Used			Perf. top
			Perf. bottom

CASING CEMENTED \_\_\_\_\_ SIZE \_\_\_\_\_ No. Ft. \_\_\_\_\_ Date \_\_\_\_\_  
COAL WAS ENCOUNTERED AT \_\_\_\_\_ FEET \_\_\_\_\_ INCHES  
\_\_\_\_\_ FEET \_\_\_\_\_ INCHES \_\_\_\_\_ FEET \_\_\_\_\_ INCHES  
\_\_\_\_\_ FEET \_\_\_\_\_ INCHES \_\_\_\_\_ FEET \_\_\_\_\_ INCHES

Formation	Color	Hard or Soft	Top	Bottom	Oil, Gas or Water	Depth Found	Remarks
Surface			0	12			
Quick Sand			12	32			
Slate			32	42			
Sand			42	49			
Slate			49	65			
Red Rock			65	80			
Sand			80	95			
Slate			95	120			
Sand			120	135			
Slate			135	205			
Sand			205	246			
Slate			246	371			
Sand			371	386			
Slate			386	541			
Sand			541	601			
Slate			601	641			
Sand			641	671			
Slate & Shells			671	870			
Salt Sand			870	990			
Slate			990	1050			
Mallon Sand			1050	1062			
Slate			1062	1073			
Little Line			1073	1085			
Big Lime			1085	1257			
Slate			1257	1264			
Kemrer Sand			1264	1278			
Slate			1278	1283			
Big Engin			1283	1380			
Slate & Shells			1380	1878			
Brown Shale			1878	1889			
Berea Sand			1889	1905			
Slate			1905	1910			
Hard Shell			1910	1987			
Brown Shale			1987	2083			
Slate & Shells			2083	2397			
Brown Shade			2397	2548			
Slate			2548	2578			
Brown Shale			2578	2758			
White Slate			2758	2942			



(Over)

Formation	Color	Hard or Soft	Top	Bottom	Oil, Gas or Water	Depth Found	Remarks
Brown Shale			2942	2986			
Lime			2986				
Total			2986				

Date \_\_\_\_\_, 19\_\_\_\_

APPROVED \_\_\_\_\_, Owner

By \_\_\_\_\_