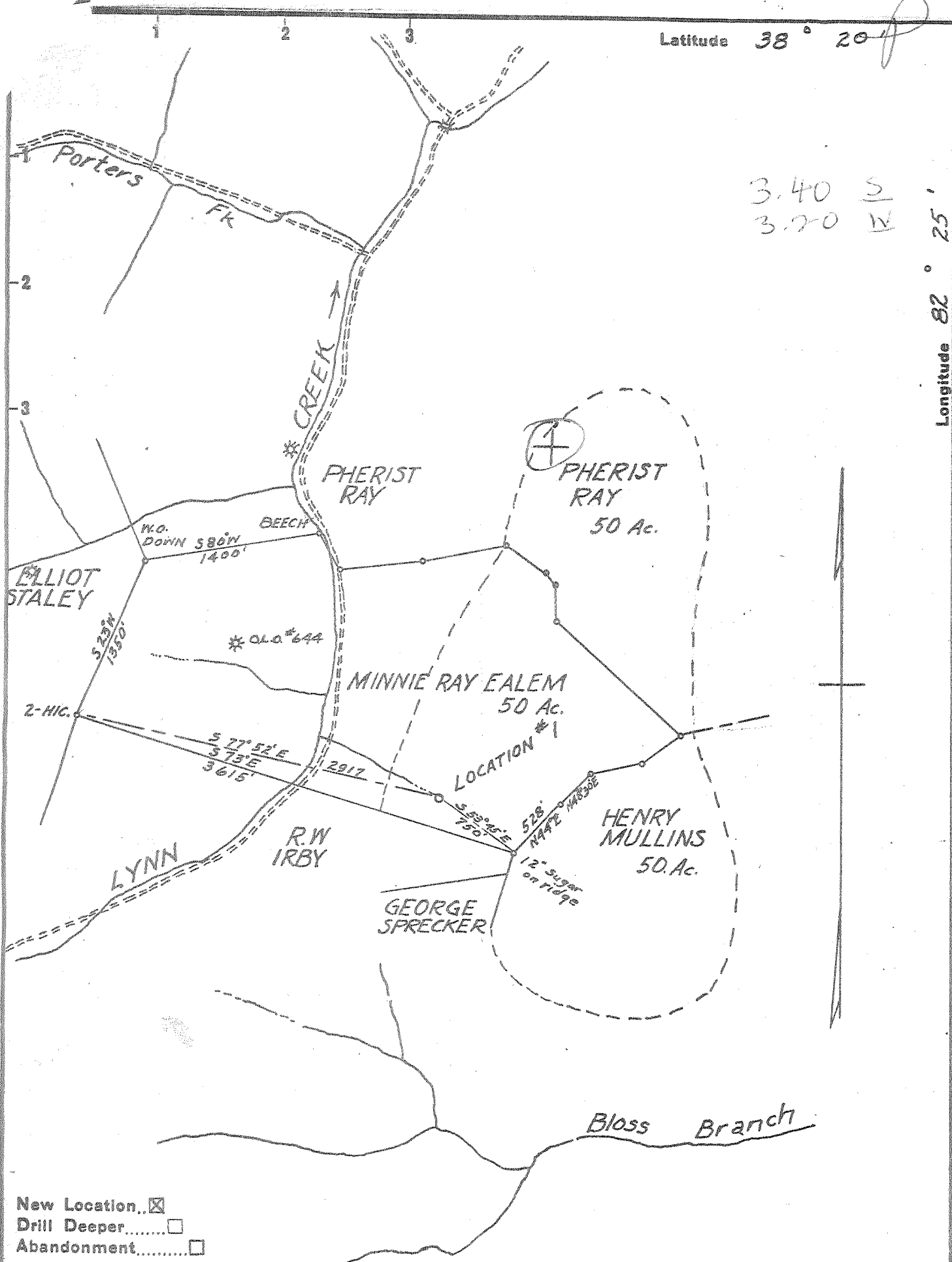


Latitude 38° 20' *f*

Longitude 82° 25'

3.40 S  
3.70 W



- New Location..
- Drill Deeper.....
- Abandonment.....

Company WEBSTER MYERS

Address HUNTINGTON, W. VA.

Farm MINNIE RAY EALEM ETAL.

Tract \_\_\_\_\_ Acres 150 Lease No. \_\_\_\_\_

Well (Farm) No. 1 Serial No. \_\_\_\_\_

Elevation (Spirit Level) 700

Quadrangle GUYANDOT SW

County WAYNE District UNION

Engineer A. C. Ewing

Engineer's Registration No. 309

File No. \_\_\_\_\_ Drawing No. \_\_\_\_\_

Date 9-24-55 Scale 1" = 1000 FT.

STATE OF WEST VIRGINIA  
DEPARTMENT OF MINES  
OIL AND GAS DIVISION  
CHARLESTON

WELL LOCATION MAP  
FILE NO. WAY-988

+ Denotes location of well on United States Topographic Maps, scale 1 to 62,500, latitude and longitude lines being represented by border lines as shown.

- Denotes one inch spaces on border line of original tracing.

(230)

Deep Well Keeler

STATE OF WEST VIRGINIA  
DEPARTMENT OF MINES  
OIL AND GAS DIVISION 12

Quadrangle Way-988  
Permit No. Way-988

## WELL RECORD

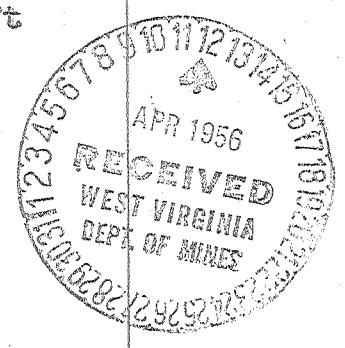
Oil or Gas Well Gas  
(KIND)

Company Consolidated Gas Company (Webster Myers)  
Address 1614 7th Ave.,  
Minnie Ray Ealem-Henry Mullins  
Farm Pharest Ray Acres 160  
Location (waters) Lynn Creek  
Well No. 1 Elev. 700  
District Union County Wayne  
The surface of tract is owned in fee by 1/3 Henry Mullins  
1/3 Pharest Ray Address Shoals, W. Va.  
1/3 Minnie R Ealem Same  
Mineral rights are owned by \_\_\_\_\_  
Address \_\_\_\_\_  
Drilling commenced Oct 4, 1955  
Drilling completed March 12, 1956  
Date Shot Big Six From 3855 To 3885  
With Shale 5800 lbs-Big Six 2000 lbs  
Open Flow 3 /10ths Water in 2-Shale Inch  
8 /10ths Water in 2 Big Six Inch  
Volume 175 MCF Cu. Ft.  
Shale 560  
Rock Pressure Big Six lbs. 1340 72 hrs.  
Oil \_\_\_\_\_ bbls., 1st 24 hrs.  
Fresh water 30 feet \_\_\_\_\_ feet  
Salt water 1035 feet \_\_\_\_\_ feet

Casing and Tubing	Used in Drilling	Left in Well	Packers
Size			Bottom hole Wall & Anchor Kind of Packer
16			
18	31	31	5"-Shoe
10	243	pulled	7"x8"x16"
8 1/4	1281	pulled	Size of 3 1/2"x16
6 3/4	2240	2240	Depth set 7"-2220
5 3/16	3234	3234	5"-3220
3	3948	3948	3"-3439 Perf. top 3905
2			Perf. bottom
Liners Used			Perf. top 3883
			Perf. bottom

CASING CEMENTED none No. Ft. \_\_\_\_\_ Date \_\_\_\_\_  
COAL WAS ENCOUNTERED AT none FEET INCHES  
\_\_\_\_\_ FEET INCHES FEET INCHES  
\_\_\_\_\_ FEET INCHES FEET INCHES

Formation	Color	Hard or Soft	Top	Bottom	Oil, Gas or Water	Depth Found	Remarks
Surface			0	10			
Sand			10	40	Water at 30 ft		
Red Rock			40	50			
Slate			50	80			
Red Rock			80	100			
Slate			100	160			
Red Rock			160	186			
Slate			186	270			
Red Rock			270	305			
Slate			305	655			
Sand			655	680			
Slate			680	770			
Sand			770	785			
Slate			785	1000			
Salt Sand			1000	1145	Hole full water 1035		
Slate			1145	1150			
Maxon Sand			1150	1210			
Slate			1210	1281			
Little Lime			1281	1296			
Pencil Cave			1296	1300			
Big Lime			1300	1460			
Injun			1460	1526			
Slate			1526	1540			
Injun			1540	1570	Water in Injun 2 bbl 3 hrs		
Slate			1570	2080			
Coffie Shale			2080	2100			
Berea Sand			2100	2120			
Slate & Shells			2120	2208			
Brown Shale			2208	2320	7" Casing 2220-Hard Shale		
Slate			2320	2520			
Brown Shale			2520	2570			
Slate			2570	2680			
Brown Shale			2680	2725			
Slate			2725	2760			
Brown Shale			2760	2960			
Slate			2960	3135			
Brown Shale			3135	32180	Show of gas 2765-Shot in Shale 5800		



3200-~~3885~~ 2620 ft lbs merc-Gas Well Explosive-five da. test 3/10 Water 2"

Formation	Color	Hard or Soft	Top / 2	Bottom	Oil, Gas or Water	Depth Found	Remarks
Corniferous Lime Big Six-Sandy Slate			3180 <del>3855-3885</del> 3900	3885 3900	Show of gas Gas at 3855 <del>3885</del>	3365-3855	15 M tested 2/10 Water 1" show 1st time with 500 lbs Herc Gas Well 18/10 Water 1"-Shot second time Explosives- test 36 hrs after shot from 3855 to 3885 with 1533 lbs Herc Gas Well Explosive-Test after blowing open 5 days 8/10 Water 2"-Producing Gas from Shale between 7" and 5-1/2" Casing-Producing Gas Big Six inside of 3" Tubing- The show of gas at 3365- was <del>xxx</del> sulphur gas with some water and oil water and oil about 1/3 bbl in 36 hrs- Well was filled with aquagell between 3" tubing and 5-1/2" casing from 3" Packer 3439 to top of hole
					3180 700 <u>2480</u>		

Date 4-11-56, 19

APPROVED \_\_\_\_\_, Owner

By [Signature]