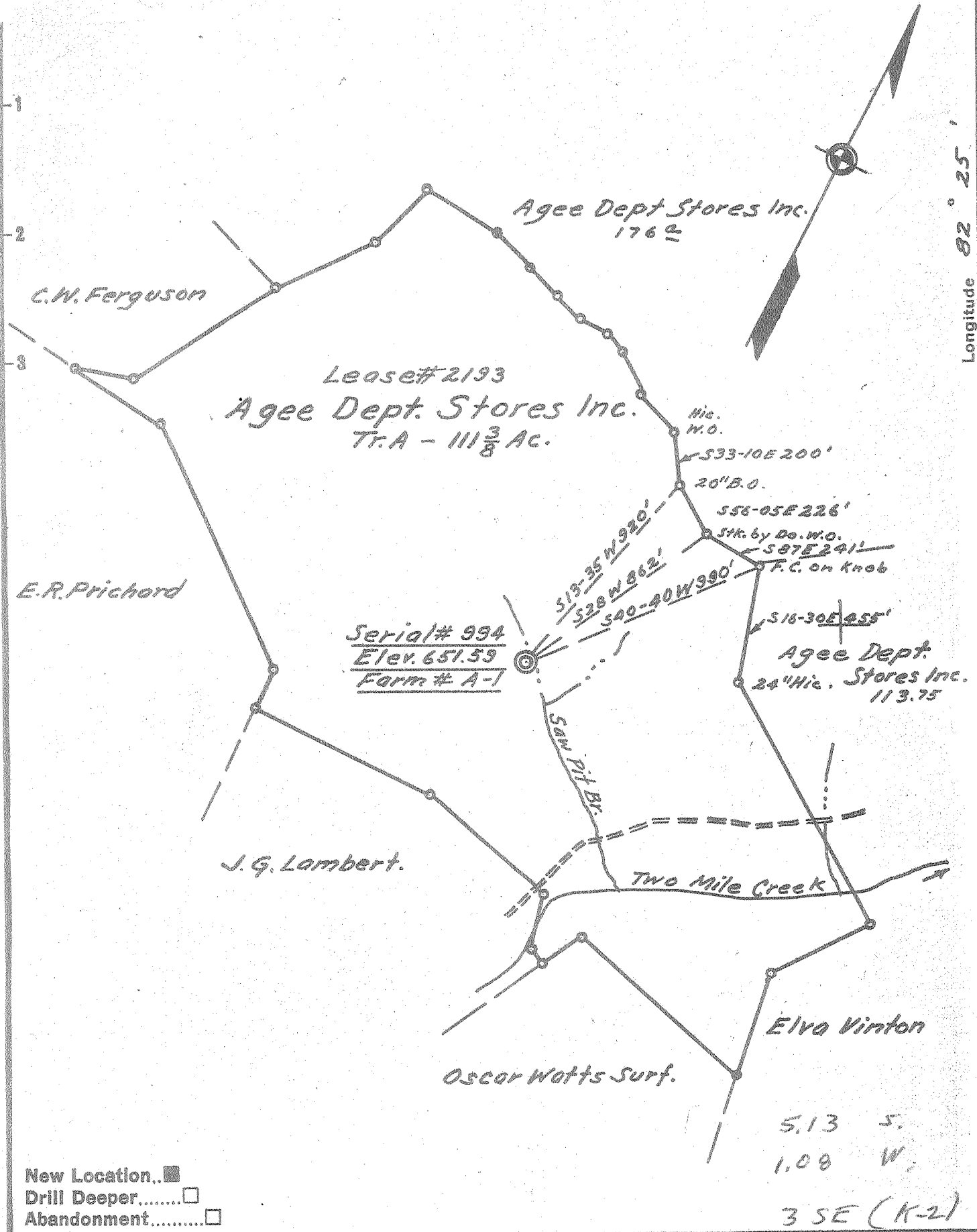


Latitude 38° 15'

Longitude 82° 25'



- New Location..
- Drill Deeper.....
- Abandonment.....

5.13 S.
1.08 W.
3 SE (K-2)

Company Owens, Libbey Owens Gas Dept.
 Address Box 4158 Charleston W. Va.
 Farm Agee Dept. Stores Inc.
 Tract A Acres 111 3/8 Lease No. 2193
 Well (Farm) No. A-1 Serial No. 994
 Elevation (Spirit Level) 651.59
 Quadrangle Wayne 3 S 5.18" W 1.08" - NW
 County Wayne District Stonewall
 Engineer T.S. Fleury
 Engineer's Registration No. 269
 File No. _____ Drawing No. _____
 Date June 8, 1956 Scale 1" = 500 Ft.

STATE OF WEST VIRGINIA
 DEPARTMENT OF MINES
 OIL AND GAS DIVISION
 CHARLESTON

WELL LOCATION MAP
 FILE NO. WAY-1018

+ Denotes location of well on United States Topographic Maps, scale 1 to 62,500, latitude and longitude lines being represented by border lines as shown.
 - Denotes one inch spaces on border line of original tracing.

(353)

Deep Well



STATE OF WEST VIRGINIA
DEPARTMENT OF MINES
OIL AND GAS DIVISION

Quadrangle Wayne

WELL RECORD

Oil or Gas Well Gas
(KIND)

Permit No. Way-1018

Company Owens, Libbey Owens, Gas Department
Address P. O. Box 4168, Charleston, W. Va.
Farm Agee Dept. Stores "A" Acres 112
Location (waters) _____
Well No. 1 (Serial #994) Elev. 651.59
District Stonewall County Wayne
The surface of tract is owned in fee by Agee Dept. Stores
Address Wayne, W. Va.
Mineral rights are owned by Agee Dept. Stores
Address Wayne, W. Va.

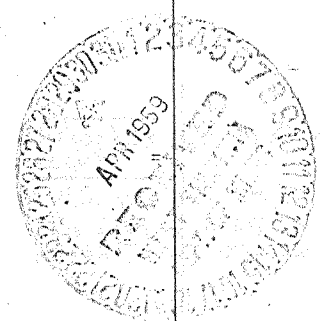
Casing and Tubing	Used in Drilling	Left in Well	Packers
Size			
16			Kind of Packer <u>"Oilwell"</u> Bottom Hole
13			
10 3/4"	192'2"	192'2"	Size of <u>7x8-5/8x16</u>
8 5/8"	1117'8"	1117'8"	Depth set <u>Bottom Hole</u>
7"	1886'2"	Pulled	
7"	1908'3"	"	
7"	1906'10"	"	Perf. top _____
2 7"	1909'7"	1909'7"	Perf. bottom _____
5 1/2"	3327'4"	3327'4"	Perf. top _____
Liners Used			Perf. bottom _____

Drilling commenced 9/29/58
Drilling completed 3/18/59
Date Shot 3/19, 25, 4/2 From 3710 To 3792
With 316# Cel., 2200# Hercules powder, 4300# Hercules powder
Open Flow /10ths Water in _____ Inch
/10ths Merc. in _____ Inch
Volume Big Six Sand 130 M Cu. Ft.
Rock Pressure 1375 lbs. 280 hrs.
Oil _____ bbls., 1st 24 hrs.
WELL ACIDIZED _____
WELL FRACTURED _____

CASING CEMENTED _____ SIZE _____ No. Ft. _____ Date _____
COAL WAS ENCOUNTERED AT 31- FEET 24 INCHES
149- FEET 24 INCHES FEET _____ INCHES
FEET _____ INCHES FEET _____ INCHES

RESULT AFTER TREATMENT _____
ROCK PRESSURE AFTER TREATMENT _____
Fresh Water 40, 112, 219, 295, Feet Salt Water 754, 788, 821, 1106, Feet 1906

Formation	Color	Hard or Soft	Top	Bottom	Oil, Gas or Water	Depth	Remarks
Surface	yellow	soft	0	8	Putting in	foundation	sills 9/19/58.
Sand	grey	soft	8	23			
Slate	Grey	soft	23	31			
Sand	light	soft	33	144	Water	40', 112'	1 BPH, 1 BPH
Slate	grey	soft	144	149			
Coal	black	soft	149	151			
Slate	grey	soft	151	179			
Sand	light	soft	179	192			
Sand	light	med.	192	220			10/2/58 Ran 10-3/4" csg. on shoe at 192'2".
Slate	dark	soft	220	242			
Sand	dark	med.	242	249	Water at 249,	4 BPH	
Slate	dark	soft	249	289			
Sand	light	med.	289	347	Water at 295,	8 BPH	
Slate	dark	soft	347	417			
Sand	light	med.	417	441			
Slate	dark	soft	441	490			
Sand	grey	soft	490	502			
Slate	grey	soft	502	512			
Sand	light	med.	512	530			
Slate	dark	soft	530	540			
Sand	light	med.	540	575			
Slate	dark	soft	575	588			
Sand	white	med.	588	602			
Slate	dark	soft	602	658			
Sand	light	med.	658	826	Water level	100' at 754,	70' at 788,
Slate	dark	soft	826	846	"	60' at 821.	
Sand	grey	hard	846	1004			



Formation	Color	Hard or Soft	Top	Bottom	Oil, Gas or Water	Depth Found	Remarks
Slate	dark	soft	1004	1017			
Lime shells	dark	hard	1017	1029			
Lime	dark	hard	1029	1034			
Red rock	red	soft	1034	1037			
Slate	dark	soft	1037	1057			
Lime shls	dark	hard	1057	1059			
Slate	dark	soft	1059	1061			
L. Lime	dark	hard	1061	1090			
Slate	dark	soft	1090	1097			
Big lime	white	hard	1097	1270			Water level 60' at 1106 SLM 1106 = sand LM 1106 10/21/58 Ran 8-5/8" csg. at 1119' on shoe. 10/25/58 SLM 1234 = sand LM 1233
Sand	grey	hard	1270	1276			
Big injun	red	med.	1276	1301			
Big injun	grey	med.	1301	1450			
Slate	dark	soft	1450	1659			
shells	dark	med.	1659	1662			
Slate	dark	soft	1662	1794			
Slate	dark	soft	1794	1806			
Shells	dark	hard	1806	1819			
Slate	dark	soft	1819	1875			
Shale	brown	soft	1875	1886			
Berea	light	hard	1886	1887			
Berea	grey	hard	1887	1894			SLM 1887½ = sand LM 1887
Slate	dark	soft	1894	1895			Gas 1895 - 548 Cu. Ft.
Berea	light	hard	1895	1905			Test 1899 - 32½ " "
							" 1905 - 245 " "
Berea	grey	hard	1905	1906			Water 1906 - 1 Gal. per hour. Hole reamed to 1896. Shot with 100# Gelatin. Cleaned out after shot to 1907½ 12/16/58 Shot with 2 shells Gelatin from 1885½ to 1907½. 200# put off with small drop jack to straighten crooked hole. 1/6/59 Shot with 1 - 7" K10' shell loaded with 200# Gelatin. Bottom of shot 1908½ Top of shot 1898½. Time bomb set for 4 hrs. Shot at 5:30 P.M. 1/6/59. 1/31/59 Ran 7" csg. at 1909'7" with "Oilwell" pkr.
Sandy shls	grey	hard	1908	1910			
Lime shls	grey	hard	1914	1928			
Slate	light	soft	1928	1932			
Lime shls	grey	hard	1932	1961			Gas 1945 6.0 MCF
Sl.-shls	white	soft	1961	2008			Test 1990 4.1 MCF
Br. shale	brown	soft	2008	2071			" 2028 3.4 MCF
							" 2071 3.1 MCF
							SLM 2071 = sand LM 2072
Sl.-shls	brown	soft	2071	2121			Test 2121 2.7 MCF
Sl.-shls	white	soft	2121	2263			
Br. shale	brown	soft	2263	2551			Test 2280 2.4 MCF
							" 2375 2.2 MCF
							" 2498 980 Cu. Ft.
							Gas? 2548 1.5 MCF
Lime shls	light	med.	2551	2562			SLM 2562 = sand LM 2558
Br. shale	brown	soft	2562	2780			Test 2614 1.3 MCF
							" 2697 Same
							" 2795 1.2 MCF
white slate	white	soft	2780	2980			
Br. shale	brown	soft	2980	3015			
Dark lime shells	dark	hard	3015	3020			
Br. shale	brown	soft	3020	3029			
Corn. lime	white	hard	3029	3120			Test 3041 980 Cu. Ft. SLM 3120 = sand LM 3119

Date April 23, 1959

APPROVED Owens, Libbey-Owens Gas Department, Owner

By A. H. Smith
A. H. Smith (Title) Geologist



STATE OF WEST VIRGINIA
DEPARTMENT OF MINES
OIL AND GAS DIVISION 8A

Quadrangle Wayne

Permit No. Way-1018

WELL RECORD

Oil or Gas Well _____ (KIND)

Company Owens, Libbey-Owens Gas Department
 Address Box 4168, Charleston, W. Va.
 Farm Agee Dept. Stores "A" Acres _____
 Location (waters) _____
 Well No. _____ Elev. _____
 District _____ County _____
 The surface of tract is owned in fee by _____
 Address _____
 Mineral rights are owned by _____
 Address _____
 Drilling commenced _____
 Drilling completed _____
 Date Shot _____ From _____ To _____
 With _____
 Open Flow _____ /10ths Water in _____ Inch
 _____ /10ths Merc. in _____ Inch
 Volume _____ Cu. Ft.
 Rock Pressure _____ lbs. _____ hrs.
 Oil _____ bbls., 1st 24 hrs.
 WELL ACIDIZED _____
 WELL FRACTURED _____

Casing and Tubing	Used in Drilling	Left in Well	Packers
Size			
16			Kind of Packer _____
18			
10			Size of _____
8 3/4			
6 3/4			Depth set _____
5 3/16			
3			Perf. top _____
2			Perf. bottom _____
Liners Used			Perf. top _____
			Perf. bottom _____

CASING CEMENTED _____ SIZE _____ No. Ft. _____ Date _____
 COAL WAS ENCOUNTERED AT _____ FEET _____ INCHES
 _____ FEET _____ INCHES FEET _____ INCHES
 _____ FEET _____ INCHES FEET _____ INCHES

RESULT AFTER TREATMENT _____

ROCK PRESSURE AFTER TREATMENT _____

Fresh Water _____ Feet Salt Water _____ Feet

Formation	Color	Hard or Soft	Top	Bottom	Oil, Gas or Water	Depth	Remarks
Corn. lime	dark	hard	3120	3742	Test 3328	Same	
					SIM 3328 = sand LM 3325		
					3/2/59 58 hr test: 17 gal. water		
					SIM 3328 = sand LM 3328		
					Set 5 1/2" csg. in red mud at 3328'		
					3/3/59 SIM 3530 = sand LM 3531		
					SIM 3718 = sand LM 3716		
Sand Big 6	grey	hard	3742	3791	Gas 3742-46	27.7 MCF	
					Test 3750	25.9 "	
					" 3782	24.8 "	
Slate	grey	soft	3791	3800			
		T. D. 3800					
		While cleaning out:					
					3/19/59 Shot well with 316# Gelatin		
					from 3740' to 3792.		
					Test B.S:	24.8 MCF	
					" 15 min. A.S:	131 "	
					" 3 hrs. A.S:	75 "	
					" 37 hrs. A.S:	66 "	
					3/23/59		
					Test 88 hrs.	61 "	
					" 91 hrs.	61.7 "	
					" 109 hrs.	60.7 "	
					" 133 hrs.	56.5 "	
					3/25/59 Shot well with 2200# Hercules		
					powder from 3740 to 3791.		
					Test B.S:	59.6 MCF	
					" 15 min. A.S:	343 "	
					" 1 hr. A.S:	210 "	
					" 18 hrs. A.S:	114 "	
					" 59 hrs. A.S:	103 "	

(over)

Formation	Color	Hard or Soft	Top <i>8A</i>	Bottom	Oil, Gas or Water	Depth Found	Remarks
					3/30/59 Pin knocked off bit and left in hole. Bottom of bit 3780 top 3773. Bottom of 3rd shot 3770 Tests: 116 hrs. 100 MCF 123 hrs. Same		
					4/2/59 Shot well with 4300# Hercules powder from 3729 to 3770. Tamped with 117' pea gravel. T. B. set for 3 hrs. Test B.S. 100 MCF		
					4/4/59 Drilled out tamp Tests: 30 min. 446 MCF 1 hr. 299 " 8 hrs. 169 "		
					Well open over weekend.		
					4/6/59 40 hrs. 125 " 78 hrs. 132 " 96 hrs. 125 "		
					4/8/59 Shut well in in 5 1/2" csg. T. D. 3776 Final test 126 MCF		
					Final Open Flow estimated 130 MCF from Big Six Sand.		

Date April 23, 19 59

APPROVED Owens, Libbey-Owens Gas Department, Owner

By A. H. Smith
A. H. Smith, Mgr. (Title)
Land, Engineering & Geology