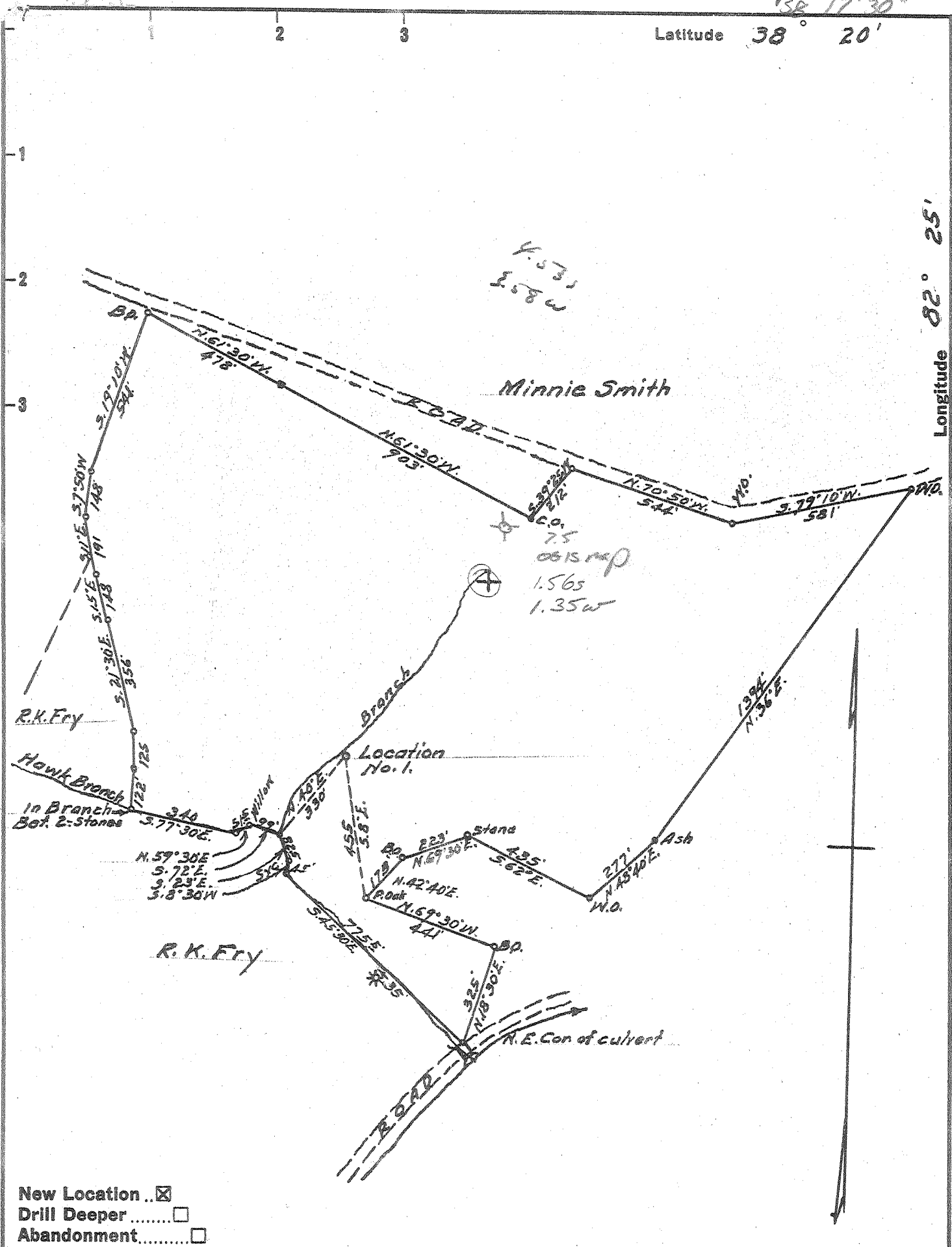


38° 17' 30"

Latitude 38° 20'

Longitude 82° 25'

82° 27' 30"



Company MAYS GAS CO  
 Address HAMLIN, W. VA.  
 Farm TALITHA MAYS  
 Tract \_\_\_\_\_ Acres 103 Lease No. \_\_\_\_\_  
 Well (Farm) No. 1 Serial No. \_\_\_\_\_  
 Elevation (Spirit Level) 680  
 Quadrangle GUYANDOT - S.W.  
 County WAYNE District UNION  
 Engineer G. E. Owing  
 Engineer's Registration No. 309  
 File No. \_\_\_\_\_ Drawing No. \_\_\_\_\_  
 Date 7-5-57 Scale 1" = 400'

STATE OF WEST VIRGINIA  
 DEPARTMENT OF MINES  
 OIL AND GAS DIVISION  
 CHARLESTON

**WELL LOCATION MAP**  
 FILE NO. WAY-1051

⊕ Denotes location of well on United States Topographic Maps, scale 1 to 62,500, latitude and longitude lines being represented by border lines as shown.  
 — Denotes one inch spaces on border line of original tracing.

*Deep Well*



STATE OF WEST VIRGINIA  
DEPARTMENT OF MINES  
OIL AND GAS DIVISION 7

Quadrangle Maysville

Permit No. Way-1051

WELL RECORD

Oil or Gas Well Way-1051  
(KIND)

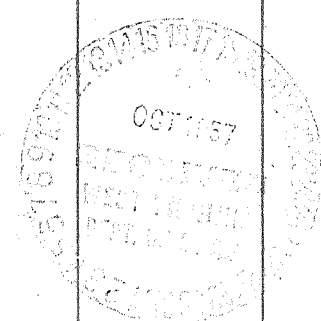
Company Mays Gas Company  
Address Hamlin, W. Va.  
Farm Talitha Mays Acres 103  
Location (waters) Big Creek  
Well No. 1 Elev. 680  
District Union County Wayne  
The surface of tract is owned in fee by Talitha Mays  
Address Shoals, W. Va.  
Mineral rights are owned by Talitha Mays  
Address Shoals, W. Va.  
Drilling commenced Oct. 4, 1957 July 8, 1957  
Drilling completed Oct. 4, 1957  
Date Shot Oct. 14 From 3918 To 3839  
With 600 Lb. Detonite  
Open Flow /10ths Water in None Inch  
/10ths Merc. in \_\_\_\_\_ Inch  
Volume Not enough to gage Cu. Ft.  
Rock Pressure \_\_\_\_\_ lbs. \_\_\_\_\_ hrs.  
Oil \_\_\_\_\_ bbls., 1st 24 hrs.  
Fresh water 1 340 feet \_\_\_\_\_ feet  
Salt water 860 feet 900 feet

Casing and Tubing	Used in Drilling	Left in Well	Packers
Size			Kind of Packer
16			
13		22	
10		10'7"	Size of
8 1/4		1276	
6 1/2		2194	Depth set
5 3/16			
3			Perf. top
2			Perf. bottom
Liners Used			Perf. top
			Perf. bottom

CASING CEMENTED \_\_\_\_\_ SIZE \_\_\_\_\_ No. Ft. \_\_\_\_\_ Date \_\_\_\_\_

COAL WAS ENCOUNTERED AT \_\_\_\_\_ FEET \_\_\_\_\_ INCHES  
\_\_\_\_\_ FEET \_\_\_\_\_ INCHES \_\_\_\_\_ FEET \_\_\_\_\_ INCHES  
\_\_\_\_\_ FEET \_\_\_\_\_ INCHES \_\_\_\_\_ FEET \_\_\_\_\_ INCHES

Formation	Color	Hard or Soft	Top	Bottom	Oil, Gas or Water	Depth Found	Remarks
Clay			0	8			
Slate			8	32			
Sand			32	34			
Slate			34	54			
Sand			54	60			
Slate			60	85			
Red Rock			85	105			
Slate			105	150			
Sand			150	163			
Slate			163	296			
Coal			296	298			
Slate			298	327			
Sand			327	415			
Slate			415	480			
Sand			480	558			
Slate			558	860			
Salt Sand			860	900			
Slate			900	924			
Salt Sand			924	1140			
Slate			1140	1189			
Maxon Sand			1189	1232			
Slate			1232	1248			
Little Lime			1248	1270			
Pencil Cave			1270	1280			
Big Lime			1280	1454			
Kenna Sand			1434	1454			
Slate			1454	1460			
Injun Sand			1460	1481			
Slate			1481	1491			
Squaw Sand			1491	1580			
Slate & Shell			1580	2054			
Brown Shale			2054	2064			
Berea Sand			2064	2075			
Shell			2075	2118			
Slate			2118	2191			



Formation	Color	Hard or Soft	Top 7	Bottom	Oil, Gas or Water	Depth Found	Remarks
Brown Shale			2191	2277			
White Slate			2277	2608			
Brown Shale			2608	2662			
White Slate			2662	2842			
Brown Shale			2842	2922			
White Slate			2922	3005			
Brown Shale			3105	3145			
Conniferous Lime			3145	3875			
Slate			3875	3880			
Red Rock			3880	3918			
Total Depth			3918				
					3145 680 <u>2465</u>		
<p>NOTE: Well plugged back from 3918 to 3145' Will shoot the brown shale</p> <p>Crushed rock from total depth to 3800' Clay from 3800 to 3145' 3 bags neat cement and 10' crushed stone at 3145'</p>							

Date \_\_\_\_\_, 19\_\_\_\_

APPROVED \_\_\_\_\_, Owner

By \_\_\_\_\_ (Title)