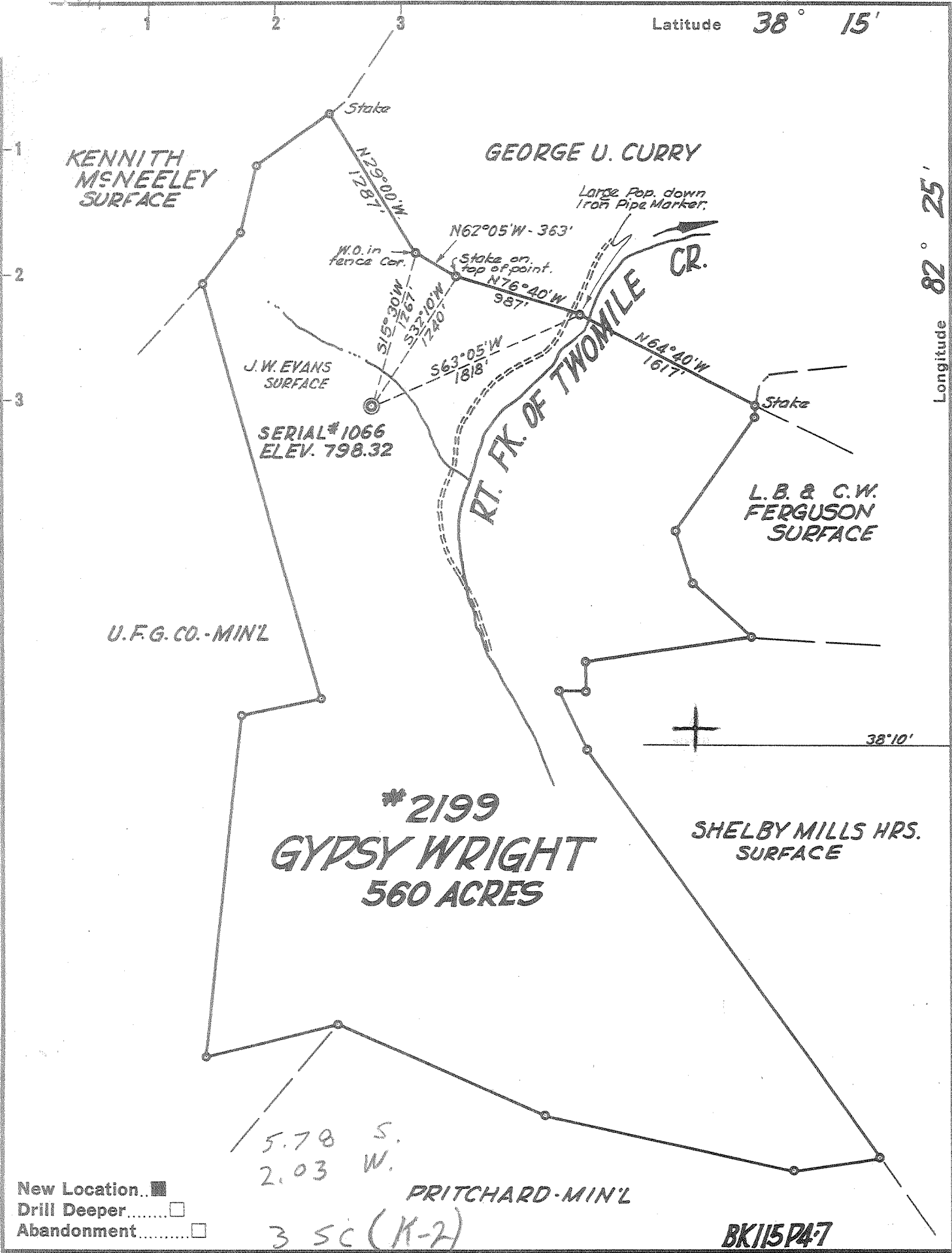


Latitude 38° 15'

Longitude 82° 25'



New Location...
 Drill Deeper.....
 Abandonment.....

Company OWENS, LIBBEY-OWENS GAS DEPT.
 Address BOX 4168 CHARLESTON 4, W. VA.
 Farm GYPSY WRIGHT
 Tract _____ Acres 560 Lease No. 2199
 Well (Farm) No. 1 Serial No. 1066
 Elevation (Spirit Level) 798.32
 Quadrangle WAYNE #NW
 County WAYNE District STONEWALL
 Engineer T. S. FLOURNOY
 Engineer's Registration No. 269
 File No. _____ Drawing No. _____
 Date APRIL 6, 1959 Scale 1" = 1000 FT.

STATE OF WEST VIRGINIA
 DEPARTMENT OF MINES
 OIL AND GAS DIVISION
 CHARLESTON

WELL LOCATION MAP
 FILE NO. WAY-1182

+ Denotes location of well on United States Topographic Maps, scale 1 to 62,500, latitude and longitude lines being represented by border lines as shown.
 - Denotes one inch spaces on border line of original tracing.

No Samples 6 227 (353) Deep Well



STATE OF WEST VIRGINIA
DEPARTMENT OF MINES
OIL AND GAS DIVISION

Quadrangle Wayne

Permit No. Way-1182

WELL RECORD

Oil or Gas Well Gas
(KIND)

Company Owens, Libbey-Owens Gas Department
Address P. O. Box 4168, Charleston 4, W. Va.
Farm Gypsy Wright Acres 560
Location (waters) _____
Well No. 1 (Serial No. 1066) Elev. 798.32
District Stonewall County Wayne
The surface of tract is owned in fee by Gypsy Wright
Address Wayne, W. Va.
Mineral rights are owned by Gypsy Wright
Address _____

Drilling commenced 8/24/59
Drilling completed 12/1/59
Date Shot 12/4/59 From 3873 To 3889
1st/100# Hercules Gel. / 2nd 1133-1/3# T. P.

Open Flow /10ths Water in _____ Inch
_____ /10ths Merc. in _____ Inch
Volume (Berea 27 M - Big 6 - 243 M) 270 M Cu. Ft.
Rock Pressure 1100 lbs. 37 hrs.
Oil 1200 bbls., 1st 24 hrs.
Fresh water 70 feet _____ feet
Salt water 860, 1520-25 feet 1626, 1675 feet

| Casing and Tubing | Used in Drilling | Left in Well | Packers |
|-------------------|------------------|--------------|--|
| Size | | | Parmaco Csg. Anchor Parmaco Bottom Kind of Packer <u>Hole</u> Larkin Upside Down |
| 16 | | | |
| 13 | | | |
| 10 3/4 | 339' 2" | 339' 2" | 5-1/2x7x16 Size of 5-1/2x7x16 3-1/2x4-5/8x16 |
| 8 5/8 | 1266' 5" | Pulled | 3221-3224 Depth set <u>3527</u> 3685-3691 |
| 8 7" | 1674' 11" | 1674' 11" | |
| 5 1/2x11/2 | 3527' 2" | 3527' 2" | |
| 3 1/2 | ----- | 3863' | Perf. top _____ 16' |
| 2 | | | Perf. bottom _____ 3846-3862 |
| Liners Used | | | Perf. top _____ Perf. bottom _____ |

CASING CEMENTED _____ SIZE _____ No. Ft. _____ Date _____

COAL WAS ENCOUNTERED AT 409 FEET 48 INCHES
297 FEET 36 INCHES FEET INCHES
FEET INCHES FEET INCHES

| Formation | Color | Hard or Soft | Top | Bottom | Oil, Gas or Water | Depth Found | Remarks |
|-------------|-------|--------------|------|--------|-------------------|-------------|------------|
| Surface | Light | Soft | 0 | 10 | | | |
| Slate | Red | Soft | 10 | 18 | | | |
| Sand | Light | Soft | 18 | 85 | Water at | 70' | 2 BPH |
| Sand, Bro. | Dark | Soft | 85 | 128 | | | |
| Slate | Dark | Soft | 128 | 143 | | | |
| Sand, Bro. | Light | Soft | 143 | 169 | | | |
| Sand | Dark | Soft | 169 | 177 | | | |
| Sand, Bro. | Dark | Soft | 177 | 206 | | | |
| Sand | Dark | Soft | 206 | 219 | | | |
| Sand | Light | Med. | 219 | 244 | | | |
| Sand | White | Soft | 244 | 267 | | | |
| Sand | Light | Med. | 267 | 297 | | | |
| Coal | -- | -- | 297 | 300 | | | |
| Slate | Dark | Soft | 300 | 302 | | | |
| Slate | Light | Muddy | 302 | 318 | | | |
| Slate | Dark | Soft | 318 | 346 | | | |
| Slate | Light | Soft | 346 | 409 | | | |
| Coal | -- | -- | 409 | 413 | | | |
| Slate | Dark | Soft | 413 | 420 | | | |
| Sand, Bro. | Dark | Soft | 420 | 498 | | | |
| Sand | White | Solid | 498 | 552 | | | |
| Sand, Bro. | Dark | Soft | 552 | 629 | | | |
| Sl. & Shls. | Dark | Soft | 629 | 704 | | | |
| Salt Sand | White | Med. | 704 | 750 | | | |
| Sl. & Shls. | Dark | Soft | 750 | 824 | | | |
| Sand | Grey | Med. | 824 | 853 | | | |
| Salt Sand | White | Hard | 853 | 900 | | | |
| Salt Sand | White | Med. | 900 | 948 | Water at | 860, | hole full. |
| Salt Sand | White | Hard | 948 | 1001 | | | |
| Sand | Dark | Hard | 1001 | 1038 | | | |
| Sand | Light | Hard | 1038 | 1078 | | | |
| Sand | Dark | Hard | 1078 | 1126 | | | |
| Water Sand | Light | Soft | 1126 | 1135 | | | |

(Over)

| Formation | Color | Hard or Soft | Top ¹² | Bottom | Oil, Gas or Water | Depth Found | Remarks |
|---------------|-------|--------------|-------------------|--------|-------------------|-------------|--|
| Salt Sand | Light | Hard | 1135 | 1158 | | | |
| Slate | Dark | Soft | 1158 | 1175 | | | |
| Sand | Dark | Hard | 1175 | 1199 | | | |
| Red Rock | Red | Soft | 1199 | 1209 | | | |
| Slate | Blue | Soft | 1209 | 1225 | | | |
| Little Lime | Dark | Hard | 1225 | 1249 | | | |
| Slate | Green | Soft | 1249 | 1251 | | | |
| Big Lime | Light | Hard | 1251 | 1268 | | | SLM 1268.5 = Sand LM 1266 9/17/59 Installed 8-5/8" csg. at 1266' 5" on shoe set in 10' Red Mud. |
| Big Lime | Light | Hard | 1268 | 1307 | | | SIM 1307 = Sand IM 1307. |
| Big Lime | Grey | Hard | 1307 | 1327 | | | |
| Big Lime | Light | Hard | 1327 | 1421 | | | |
| Sand | Grey | Med. | 1421 | 1432 | | | |
| Grey Injun | Grey | Med. | 1432 | 1560 | | | 1520-25, Show of gas - water |
| Sand, Bro. | Dark | Soft | 1560 | 1590 | | | |
| Sl. & Shls. | Dark | Soft | 1590 | 1666 | | | Water at 1626, 1/2 BPH |
| Slate | Dark | Soft | 1666 | 1672 | | | |
| Shells | Dark | Hard | 1672 | 1675 | | | Salty water, 1 BPH at 1675 9/25/59 Installed 7" csg. at 1674' 11" on shoe. |
| Shells | Dark | Hard | 1675 | 1681 | | | |
| Slate | Grey | Soft | 1681 | 1684 | | | |
| Sl. & Shls. | Dark | Soft | 1684 | 1846 | | | |
| Sl. & Shls. | Dark | Soft | 1846 | 1900 | | | |
| Sl. & Shls. | White | Soft | 1900 | 1960 | | | |
| Shells | Grey | Hard | 1960 | 1973 | | | |
| Shells | Dark | Hard | 1973 | 1975 | | | Packer shells 1960-1975 |
| Sl. & Shls. | White | Soft | 1975 | 2005 | | | |
| Coffee Shale | Dark | Soft | 2005 | 2028 | | | |
| Br. Shale | Br. | Soft | 2028 | 2035 | | | |
| Berea | Grey | Hard | 2035 | 2045 | | | Gas 2041, 56.5 M SLM 2045 = Sand LM 2048 10/1/59 Pulled 8-5/8" csg. at 1265' 4" |
| Shells | Light | Med. | 2045 | 2109 | | | |
| Sl. & Shls. | Light | Med. | 2109 | 2166 | | | Gas 2118, 24.7 M |
| Br. Shale | Br. | Soft | 2166 | 2249 | | | |
| Slate | Light | Soft | 2249 | 2372 | | | |
| Shale | White | Soft | 2372 | 2408 | | | |
| Br. Shale | Br. | Soft | 2408 | 2901 | | | Test 2432 12.9 M Gas 2457 13.6 M 2487 13.6 M Gas 2542 14 M 2580 12.2 M Gas 2718 14.3 M 2812 11.4 M Gas 2870 13.6 M Test 2909, 12.2 M |
| Shale & Shls. | Br. | Med. | 2901 | 2909 | | | |
| Br. Shale | Br. | Soft | 2909 | 2916 | | | |
| Slate | White | Soft | 2916 | 3010 | | | Gas ? 2965 12.6 M |
| Slate | White | Muddy | 3010 | 3061 | | | |
| Slate | Light | Soft | 3061 | 3123 | | | Test 3112 11.4 M |
| Br. Shale | Br. | Soft | 3123 | 3164 | | | Gas ? 3121 12.6 M |
| Corn. Lime | Dark | Hard | 3164 | 3182 | | | SLM 3165 = Sand LM 3157 |
| Corn. Lime | Grey | Hard | 3182 | 3261 | | | Gas ? 3200 12.9 M |
| Corn. Lime | Dark | Hard | 3261 | 3504 | | | |
| Corn. Lime | Light | Hard | 3504 | 3527 | | | 11/9/59 Installed 5-1/2" csg. at 3527 2" with Parmco csg. Anchor Pkr. & Parmco Bottom Hole Pkr. |
| Corn. Lime | Grey | Hard | 3527 | 3532 | | | |
| Corn. Lime | Dark | Hard | 3532 | 3631 | | | |
| Corn. Lime | Grey | Hard | 3631 | 3644 | | | |

Date February 18, 1960

APPROVED OWENS, LIBBEY-OWENS GAS DEPARTMENT, Owner

By A. H. Smith
A. H. Smith (Title) Land, Engrg. & Geol.

3164
798
2366



STATE OF WEST VIRGINIA
DEPARTMENT OF MINES
OIL AND GAS DIVISION

Quadrangle Wayne

Permit No. Way-1182

WELL RECORD

Oil or Gas Well Gas
(KIND)

| | | | | |
|---|-------------------|------------------|--------------|----------------------|
| Company <u>Owens, Libbey-Owens Gas Department</u> | Casing and Tubing | Used in Drilling | Left in Well | Packers |
| Address _____ | Size | | | Kind of Packer _____ |
| Farm <u>Gypsy Wright</u> Acres _____ | 16 | | | |
| Location (waters) _____ | 12 | | | Size of _____ |
| Well No. <u>1 (Serial #1066)</u> Elev. _____ | 10 | | | Depth set _____ |
| District _____ County _____ | 8 1/4 | | | |
| The surface of tract is owned in fee by _____ | 6 5/8 | | | Perf. top _____ |
| Address _____ | 5 3/16 | | | Perf. bottom _____ |
| Mineral rights are owned by _____ | 3 | | | Perf. top _____ |
| Address _____ | 2 | | | Perf. bottom _____ |
| Drilling commenced _____ | Liners Used _____ | | | |
| Drilling completed _____ | | | | |
| Date Shot _____ From _____ To _____ | | | | |
| With _____ | | | | |
| Open Flow _____ /10ths Water in _____ Inch | | | | |
| _____ /10ths Merc. in _____ Inch | | | | |
| Volume _____ Cu. Ft. | | | | |
| Rock Pressure _____ lbs. _____ hrs. | | | | |
| Oil _____ bbls., 1st 24 hrs. | | | | |
| Fresh water _____ feet _____ feet | | | | |
| Salt water _____ feet _____ feet | | | | |

CASING CEMENTED _____ SIZE _____ No. Ft. _____ Date _____

COAL WAS ENCOUNTERED AT _____ FEET _____ INCHES

_____ FEET _____ INCHES FEET _____ INCHES

_____ FEET _____ INCHES FEET _____ INCHES

| Formation | Color | Hard or Soft | Top | Bottom | Oil, Gas or Water | Depth Found | Remarks |
|--------------|-------|--------------|------|--------|------------------------------------|-------------|---------|
| Corn. Lime | Dark | Hard | 3644 | 3666 | | | |
| Corn. Lime | Grey | Hard | 3666 | 3685 | | | |
| Corn. Lime | Dark | Hard | 3685 | 3700 | | | |
| Corn. Lime | Grey | Hard | 3700 | 3713 | | | |
| Corn. Lime | Dark | Hard | 3713 | 3730 | | | |
| Corn. Lime | Grey | Hard | 3730 | 3756 | | | |
| Corn. Lime | Light | Hard | 3756 | 3832 | | | |
| Corn. Lime | Dark | Hard | 3832 | 3851 | | | |
| Sand | Dark | Hard | 3851 | 3869 | | | |
| Corn. Lime | Dark | Hard | 3869 | 3879 | | | |
| Big Six Sand | Dark | Hard | 3879 | 3899 | Gas 3882 | 133 M | |
| | | | | | Gas 3885 | 166 M | |
| | | T. D. | | 3899 | | | |
| | | | | | SIM 3899 = Sand IM 3900 | | |
| | | | | | 12/4/59 Shot well with 100# | | |
| | | | | | Hercules Gelatin from 3873-3889 | | |
| | | | | | (12:50 P. M.) | | |
| | | | | | Test B.S.: 133 M | | |
| | | | | | A. T. O. 132 Hrs. 210 M | | |
| | | | | | Shot Big Six Sand 2nd Time | | |
| | | | | | with 1133-1/3# T. P. from 3874 to | | |
| | | | | | 3891 | | |
| | | | | | Test B. S.: 213 M | | |
| | | | | | " 15 Min. A. S. 300 M | | |
| | | | | | 48 Hrs. A. S. 206 M | | |
| | | | | | 12/16/59 Installed 3-1/2" Tbg. at | | |
| | | | | | 3862' with Larkin Upside Down Pkr. | | |
| | | | | | set at 3685-3691 | | |
| | | | | | F. O. P.: Big Six Sand 243 M | | |
| | | | | | Berea Sand 27 M | | |
| | | | | | Total 270 M | | |
| | | | | | 12/16 Shut in at 8:15 P. M. | | |
| | | | | | 3 Days after 2nd shot. | | |

(Over)