

LATITUDE 82° 30'

LONGITUDE 38° 55'

25
2815 map
2.34s
1.7/65

Company _____

Farm _____

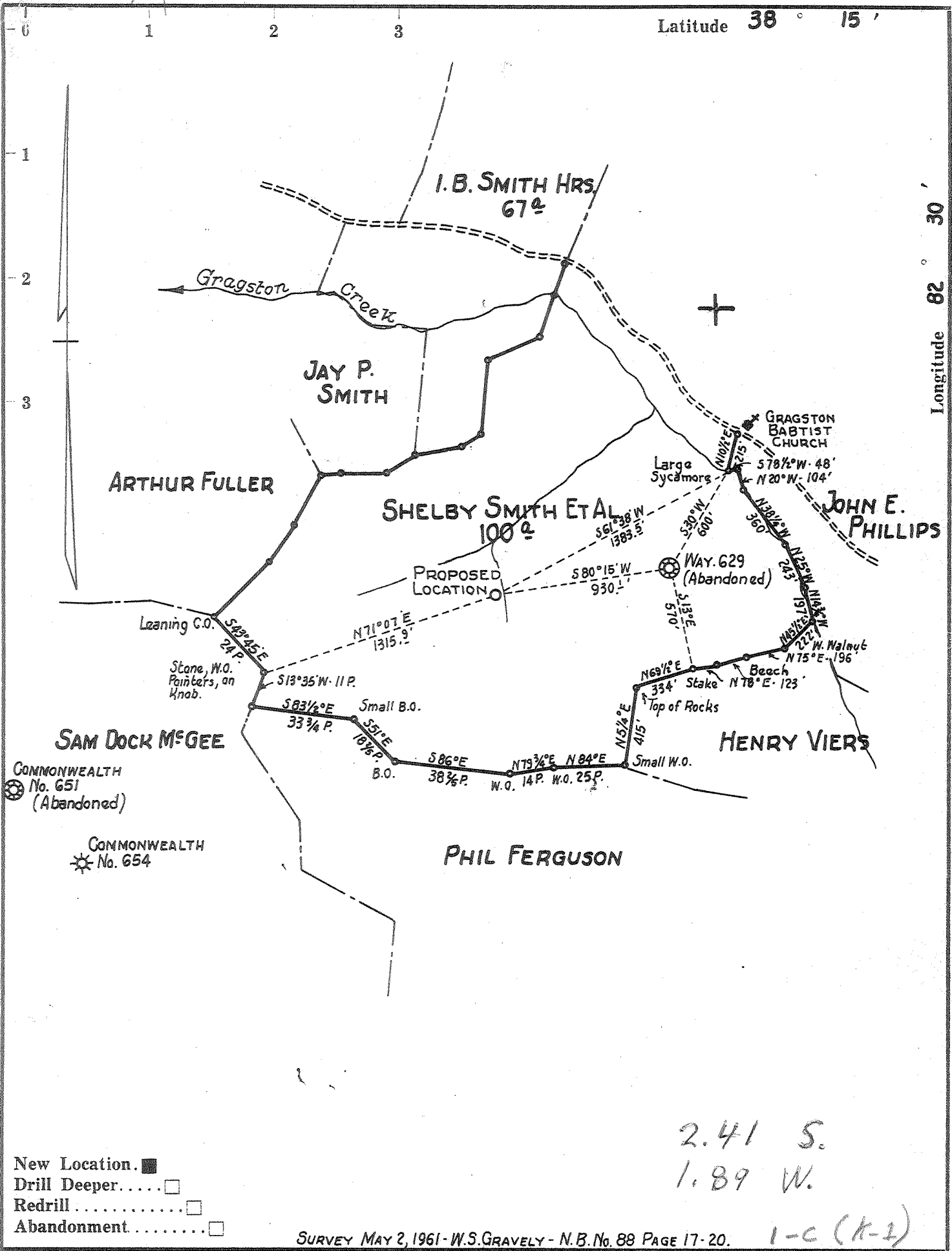
Quad Prichard

County Wayne

District Butler

WELL LOCATION MAP

File No. Way-1352



- New Location.
- Drill Deeper.
- Redrill
- Abandonment

SURVEY MAY 2, 1961 - W.S. GRAVELY - N.B. No. 88 PAGE 17-20.

Company	COMMONWEALTH GAS CORPORATION
Address	P.O. BOX 1433 CHARLESTON, W. VA.
Farm	SHELBY SMITH ET AL
Tract	Acres 100 Lease No. 2065
Well (Farm) No.	1 Serial No. 683
Elevation (Spirit Level)	655.5'
Quadrangle	LOUISA N.E. NE
County	WAYNE District BUTLER
Engineer	G.H. HALL G.H. Hall
Engineer's Registration No.	2602
File No.	Drawing No.
Date	MAY 8, 1961 Scale 1" = 660'

STATE OF WEST VIRGINIA
 DEPARTMENT OF MINES
 OIL AND GAS DIVISION
 CHARLESTON

WELL LOCATION MAP
 FILE NO. WAY-1352

+ Denotes location of well on United States Topographic Maps, scale 1 to 62,500, latitude and longitude lines being represented by border lines as shown.

— Denotes one inch spaces on border line of original tracing.

No samples

Deep Well



STATE OF WEST VIRGINIA
DEPARTMENT OF MINES
OIL AND GAS DIVISION 33

Quadrangle Louisa N. E.

WELL RECORD

Permit No. WAY 1352

Oil or Gas Well Dry hole
(KIND)

Company Commonwealth Gas Corporation
Address P. O. Box 1433, Charleston, W. Va.
Farm Shelby Smith, et al Acres 100
Location (waters) Crugston Creek
Well No. 683 Elev. 655.5
District Butler County Wayne
The surface of tract is owned in fee by Shelby Smith, Agent
208 9th Ave., West Address Huntington, W. Va.
Mineral rights are owned by Same
Address _____

Drilling commenced May 19, 1961
Drilling completed Sept. 13, 1961
Date Shot Sept. 13, '61 From 3625 To 3575
With 500# Gelatin - Shot 8-4-61 104 Qts. Sol. Glys.

Open Flow /10ths Water in _____ Inch
/10ths Merc. in _____ Inch
Volume 49,000 Tuscarora Cu. Ft.
Rock Pressure _____ lbs. _____ hrs.
Oil _____ bbls., 1st 24 hrs.

WELL ACIDIZED _____
WELL FRACTURED _____

Casing and Tubing	Used in Drilling	Left in Well	Packers
Size			Kind of Packer _____
16			
13	30	30'	
10	398' 7"	398' 7"	Size of _____
8 1/4	1956' 1"	1956' 1"	
6 3/4	3167'	3167'	Depth set _____
5 3/16			
3			Perf. top _____
2			Perf. bottom _____
Liners Used			Perf. top _____
			Perf. bottom _____

CASING CEMENTED _____ SIZE _____ No. Ft. _____ Date
25 Bags cement behind 8" 15 Bags behind 7"

COAL WAS ENCOUNTERED AT 222 FEET 24" INCHES
_____ FEET _____ INCHES _____ FEET _____ INCHES
_____ FEET _____ INCHES _____ FEET _____ INCHES

RESULT AFTER TREATMENT _____

ROCK PRESSURE AFTER TREATMENT _____

Fresh Water 50 Feet 255 Salt Water 820 - 830 - 855 Feet 3109 -18 3176-89

Formation	Color	Hard or Soft	Top	Bottom	Oil, Gas or Water	Depth	Remarks
Surface			0	10			
Sand			10	20			
Blue Slate			20	150	Water	50	1-1/2 bailer per hour
Sand			150	175			
Slate			175	222			
COAL			222	224			
Sand			224	285	Water	255	3 bailers per hour
Slate & Shells			285	330			
Sand			330	350			
Blue Slate			350	470			
Sand			470	490			
Slate & Shells			490	620			
Sand			620	640			
Slate & Shells			640	700			
Sand			700	715			
Blue Slate			715	815			
SALT SAND			815	895	Water	820-830	
Slate			895	1020		855	Hole full
Sand			1020	1040			
Brown Slate			1040	1055			
Sand			1055	1065		1077	S. L. M.
LITTLE LIME			1065	1076			
BIG LIME			1076	1098			
Slate			1098	1100			
Lime			1100	1245			
KEENER SAND			1245	1260			
Slate			1260	1280			
INJUN SAND			1280	1440			

Formation	Color	Hard or Soft	Top ³³	Bottom	Oil, Gas or Water	Depth Found	Remarks
Slate			1140	1860			
Brown Shale			1860	1885			
BEREA SAND			1885	1900	Gas	1890	Small show
Slate			1900	1905		1905	S. L. M.
Shell			1905	1910			
Slate			1910	1917			
Shell			1917	1921			
Slate			1921	1927			
BROWN SHALE			1927	1937	Oil & Gas	1927-1937	Show
Brown Shell			1937	1942			
Slate			1942	1951			
Shell			1951	1960			
Slate			1960	1970			
BROWN SHALE			1970	2100	Oil	1970	Show
Slate & Shell			2100	2177			
Shell			2177	2190			
Slate & Shell			2190	2235			
BROWN SHALE			2235	2350			
Slate & Shell			2350	2405			
BROWN SHALE			2405	2685	Gas	2645-55	Show
White Slate			2685	2865			
BROWN SHALE			2865	2901		2901	S. L. M.
CORNIFEROUS LIME			2901	3630	Gas	3100-3109	Sulphur Gas
BIG SIX SAND			3630	3650	Black water	3109-18	1/3 bailer p/h
Red Slate			3650	3665		3169	S. L. M.
Blue Slate			3665	3685	Black water	3176-3189	2/3 bailer each 3 hrs.
Red Rock			3685	3768	Gas	3609-17	Show
Blue Slate			3768	3865			
Red Rock			3865	3935			
Lime Shell			3935	3945			
Blue Slate			3945	3991			
CLINTON SAND			3991	4014	Gas	4001-4005	2/10 W-2" 60M
Slate & Shells			4014	4020			Blew down to 49 M
		TOTAL DEPTH		4020		4020	S. L. M.
		FILLED BACK TO		4014			

2901
656
2245

Date September 15, 19 61

APPROVED Commonwealth Gas Corporation, Owner

By W. S. Gravely, Land & Eng. Dept.
(Title)