

38° 17' 30"

Latitude 38 20'

BARNEY ASBURY

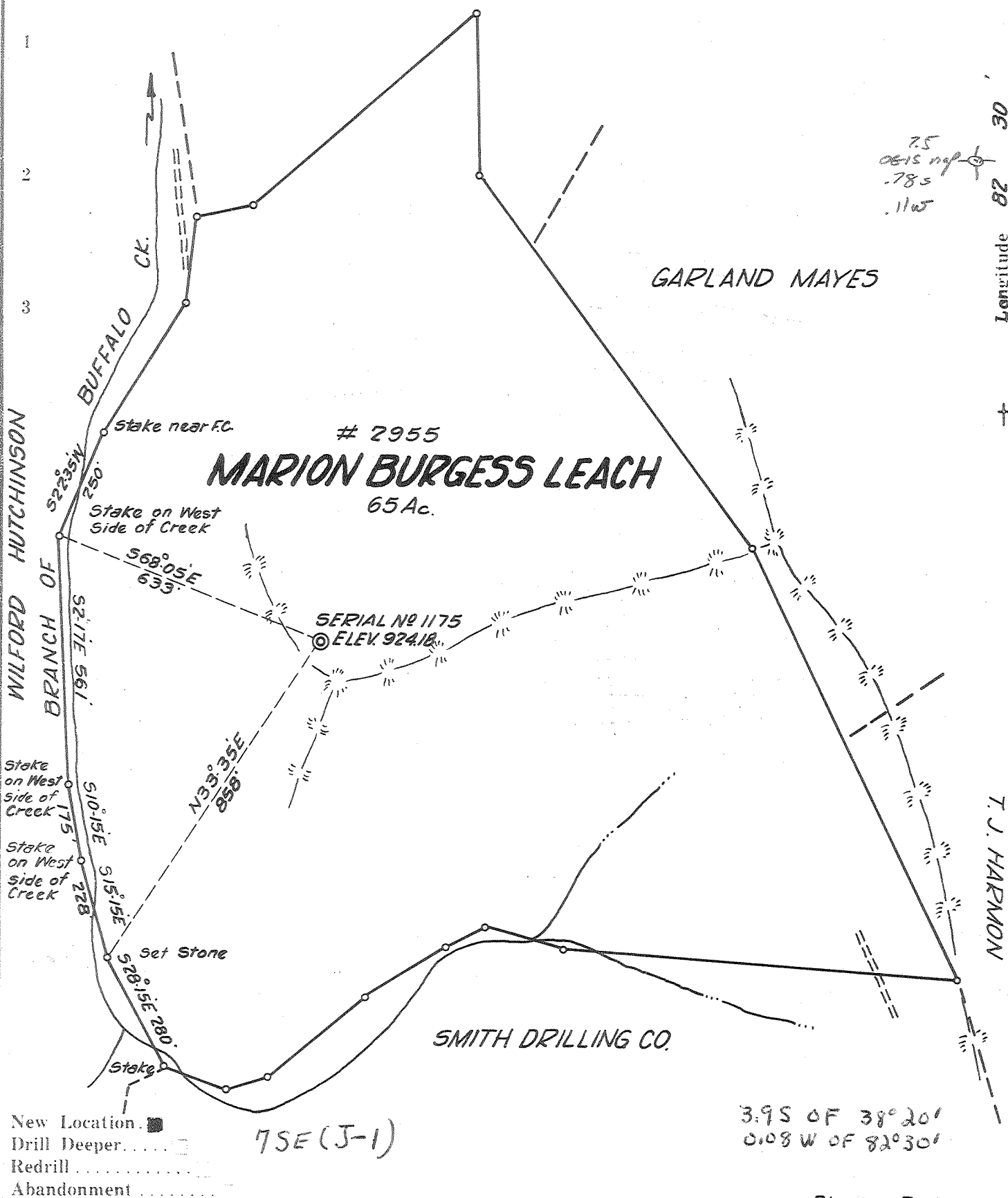
GARLAND MAYES

Longitude 82 30'

WILFORD HUTCHINSON

T. J. HARMON

# # 2955 MARION BURGESS LEACH 65 Ac.



7.5  
0615 nsp  
.785  
.11W

- New Location. ■
- Drill Deeper. .... □
- Redrill. .... □
- Abandonment. .... □

75E (J-1)

3.95 OF 38° 20'  
0.08 W OF 82° 30'

BK 126 P 24

Company OWENS, LIBBEY-OWENS GAS DEPT.  
 Address BOX 4168 CHARLESTON, W. VA.  
 Farm MARION BURGESS ~~LEACH~~  
 Tract D Acres 65 Lease No. 2955  
 Well (Farm) No. 1 Serial No. 1175  
 Elevation (Spirit Level) 924.18  
 Quadrangle CEREDO - SE  
 County WAYNE District CEREDO  
 Engineer Irvin Ramsey  
 Engineer's Registration No. 1540  
 File No. \_\_\_\_\_ Drawing No. \_\_\_\_\_  
 Date JULY 17, 1962 Scale 1" = 300 FT.

STATE OF WEST VIRGINIA  
 DEPARTMENT OF MINES  
 OIL AND GAS DIVISION  
 CHARLESTON

**WELL LOCATION MAP**  
 FILE NO. WAY-1438

— Denotes location of well on United States Topographic Maps, scale 1 to 62,500, latitude and longitude lines being represented by border lines as shown.

— Denotes one inch spaces on border line of original tracing.

DEEP WELL (NO SAMPLES)

5-5 229



STATE OF WEST VIRGINIA  
DEPARTMENT OF MINES  
OIL AND GAS DIVISION 14

Quadrangle Ceredo

Permit No. Way-1438

WELL RECORD

Oil or Gas Well GAS  
(KIND)

Company OWENS, LIBBEY-OWENS GAS DEPARTMENT  
Address P. O. Box 4168, Charleston 4, W. Va.  
Farm Marian W. Burgess "D" Acres 61-1/8  
Location (waters) \_\_\_\_\_  
Well No. 1 (Serial No. 1175) Elev. 924.18'  
District Ceredo County Wayne  
The surface of tract is owned in fee by \_\_\_\_\_  
Address \_\_\_\_\_  
Mineral rights are owned by Mrs. Marian B. Leach  
309 Lock Lane Address Richmond, Va.  
Drilling commenced August 22, 1962  
Drilling completed November 23, 1962  
Date Shot \_\_\_\_\_ From \_\_\_\_\_ To \_\_\_\_\_  
With \_\_\_\_\_  
Open Flow /10ths Water in \_\_\_\_\_ Inch  
/10ths Merc. in \_\_\_\_\_ Inch  
Volume \_\_\_\_\_ Cu. Ft.  
Rock Pressure \_\_\_\_\_ lbs. \_\_\_\_\_ hrs.  
Oil \_\_\_\_\_ bbls., 1st 24 hrs.  
WELL ACIDIZED 11-29-62 by Halliburton  
Acidized 12-5-62 by Halliburton -- See Remarks  
WELL FRACTURED \_\_\_\_\_

Casing and Tubing	Used in Drilling	Left in Well	Packers
Size			Kind of Packer
16			Larkin Upside Down
13			
10 -3/4"	323'4"	323'4"	Size of
8 5/8"	1518'2"	1518'2"	3 1/2" x 7" x 16"
6 7/8"	2368'5"	2368'5"	Depth set 3950'
5 3/8"	3932'2"	3932'2"	9
3 -1/2"	3981'11"	3981'11"	Perf. top _____
2			Perf. bottom _____
Liners Used			Perf. top _____
			Perf. bottom _____

CASING CEMENTED 5 1/2" SIZE 3933' No. Ft. 11-6-62 Date  
40 bags Marquette cement, 260 bbls. water.

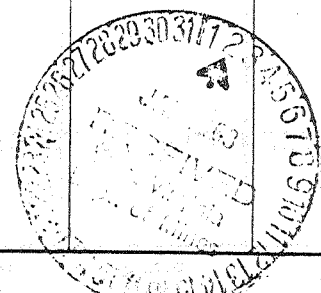
COAL WAS ENCOUNTERED AT \_\_\_\_\_ FEET \_\_\_\_\_ INCHES  
\_\_\_\_\_ FEET \_\_\_\_\_ INCHES \_\_\_\_\_ FEET \_\_\_\_\_ INCHES  
\_\_\_\_\_ FEET \_\_\_\_\_ INCHES \_\_\_\_\_ FEET \_\_\_\_\_ INCHES

RESULT AFTER TREATMENT 226 MCF Big Six Sand

ROCK PRESSURE AFTER TREATMENT 1140# in 168 hrs.

Fresh Water 80, 675 Feet 840 Salt Water 1307, 1845 Feet

Formation	Color	Hard or Soft	Top	Bottom	Oil, Gas or Water	Depth	Remarks
Surface	Red	Soft	0	20	Installed 9' conductor Water at 80' 5 BPH		
Slate	Grey	Soft	20	162			
Sand	Light	Soft	162	207			
Slate	Grey	Soft	207	212			
Red Rock	Red	Soft	212	230			
Slate	Red	Soft	230	250			
Slate	Grey	Soft	250	298	8-25-62 SLM 323 = Sand IM 323 Installed 10-3/4" casing at 323' on a shoe set in 10' of red mud.		
Red Rock	Red	Soft	298	323			
Slate	Dark	Med.	323	330			
Slate	Grey	Soft	330	421			
Broken Sand	White	Soft	421	441			
Slate	Light	Soft	441	540			
Broken Sand	Light	Soft	540	604			
Salt Sand	White	Soft	604	680			Water at 675' 1 BPH
Slate	White	Soft	680	697			
Sand	White	Soft	697	707			
Slate	Dark	Soft	707	750			
Sand	Light	Soft	750	840			Water at 840' 4 BPH
Slate	Light	Soft	840	900			
Sand	Light	Soft	900	955			
Slate	Blue	Soft	955	985			
Sand	Light	Med.	985	989			
Slate	Dark	Soft	989	1107			
Broken Sand	Light	Soft	1107	1145			
Slate	Dark	Soft	1145	1210			
Broken Sand	Dark	Med.	1210	1220			
Sand	Light	Med.	1220	1242			



Formation	Color	Hard or Soft	Top /4	Bottom	Oil, Gas or Water	Depth Found	Remarks
Slate	Dark	Soft	1242	1256			
Broken Sand	Dark	Soft	1256	1290			
Sand	Grey	Hard	1290	1378	Water 1300-	1307'	Hole filling
Slate	Dark	Soft	1378	1393			
Sand	Dark	Hard	1393	1420			
Slate	Dark	Soft	1420	1425			
Sand	Dark	Hard	1425	1428			
Slate	Dark	Med.	1428	1446			
Lime	Blue	Med.	1446	1456			
Slate	Dark	Med.	1456	1469			
Slate	Dark	Soft	1469	1505			
Big Lime	White	Hard	1505	1513			
Slate	Grey	Soft	1513	1515			
Big Lime	White	Hard	1515	1555			
					9-13-62		
					Installed 8-5/8" casing at 1520' on a shoe in red mud.		
Big Lime	Light	Hard	1555	1664			
Grey Injun	Grey	Med.	1664	1782			
Broken Sand	Grey	Soft	1782	1865	Water 1845'	1/2 BPH	
Sl & Shls	Dark	Med.	1865	1913			
Slate	Dark	Med.	1913	2104			
Slate	Dark	Soft	2104	2248			
Shell	Dark	Med.	2248	2266			
Slate	Light	Med.	2266	2295			
Coffee Shale	Brown	Soft	2295	2317			
Berea Grit	Light	Hard	2317	2336			
Sl & Shls	Dark	Hard	2336	2362			
Shell	Blue	Hard	2362	2377			
					9-26-62		
					Installed 7" casing at 2370' on a shoe. Casing set in red mud. Put 500 gals. of water behind 7" casing.		
Slate	Grey	Med.	2377	2387			
Shell	Grey	Hard	2387	2397			
Shell	Dark	Hard	2397	2404			
Slate	White	Soft	2404	2420			
Br. Shale	Brown	Soft	2420	2525			
Slate	White	Med.	2525	2613			
Shell	Light	Hard	2613	2621			
Slate	White	Med.	2621	2648			
Br. Shale	Brown	Soft	2648	2800			
Shale	Grey	Med.	2800	2845			
Br. Shale	Brown	Soft	2845	2926			
Shale	Grey	Med.	2926	2976			
Br. Shale	Brown	Med.	2976	3116			
Br. Shale	Brown	Soft	3116	3144			
Slate	White	Med.	3144	3310			
Br. Shale	Brown	Med.	3310	3349			
Corn. Lime	Grey	Hard	3349	3467	Gas 3349'	173 cu.ft.	
					Gas 3420'	300 cu.ft.	
Corn. Lime	Dark	Hard	3467	3886			
Corn. Lime	Dark	Hard	3886	3936			
					11-5-62		
					Installed 5 1/2" casing at 3933' on a shoe with 5 centralizers set at 3932', 3861', 3702', 3549' and 3393'		
					11-6-62		
					Halliburton cemented in the 5 1/2" casing with 40 bags of Marquette cement. Pumped in 260 bbls. of water, and could not circulate. Pumped in 140 bbls. more. Used a total of 400 bbls. water.		
Corn. Lime	Grey	Med.	3933	3939			
Corn. Lime	Dark	Hard	3939	3965			
Corn. Lime	Dark	Hard	3965	3989			
Big Six Sand	Grey	Hard	3989	4055	SIM 3993 = Sand IM 3992		
					Gas 3993'	12.2 MCF	
Slate	Grey	Med.	4055	4062	Test 4056'	125.0 MCF	
Red Rock	Red	Med.	4062	4077	TOTAL DEPTH		

Date December 28, 1962

APPROVED OWENS, LIBBEY-OWENS GAS DEPARTMENT Owner

By *A. H. Smith*  
A. H. Smith, Mgr. (Title) Land, Engrg. & Geol



STATE OF WEST VIRGINIA  
DEPARTMENT OF MINES  
OIL AND GAS DIVISION 14A

Quadrangle Ceredo

Permit No. Way-1438

WELL RECORD

Oil or Gas Well GAS  
(KIND)

Company OWENS, LIBBRY-OWENS GAS DEPARTMENT  
Address P. O. Box 4168, Charleston 4, W. Va.  
Farm Marian Burgess "D" Acres 61-1/8  
Location (waters) \_\_\_\_\_  
Well No. \_\_\_\_\_ Elev. \_\_\_\_\_  
District \_\_\_\_\_ County \_\_\_\_\_  
The surface of tract is owned in fee by \_\_\_\_\_  
Address \_\_\_\_\_  
Mineral rights are owned by \_\_\_\_\_  
Address \_\_\_\_\_  
Drilling commenced \_\_\_\_\_  
Drilling completed \_\_\_\_\_  
Date Shot \_\_\_\_\_ From \_\_\_\_\_ To \_\_\_\_\_  
With \_\_\_\_\_  
Open Flow \_\_\_\_\_ /10ths Water in \_\_\_\_\_ Inch  
\_\_\_\_\_ /10ths Merc. in \_\_\_\_\_ Inch  
Volume \_\_\_\_\_ Cu. Ft.  
Rock Pressure \_\_\_\_\_ lbs. \_\_\_\_\_ hrs.  
Oil \_\_\_\_\_ bbls., 1st 24 hrs.  
WELL ACIDIZED \_\_\_\_\_  
WELL FRACTURED \_\_\_\_\_

Casing and Tubing	Used in Drilling	Left in Well	Packers
Size			Kind of Packer _____
16.			
13.			Size of _____
10.			
8 3/4			Depth set _____
6 3/4			
5 3/16			Perf. top _____
3.			Perf. bottom _____
2.			
Liners Used			Perf. top _____
			Perf. bottom _____

CASING CEMENTED \_\_\_\_\_ SIZE \_\_\_\_\_ No. Ft. \_\_\_\_\_ Date \_\_\_\_\_

COAL WAS ENCOUNTERED AT \_\_\_\_\_ FEET \_\_\_\_\_ INCHES  
\_\_\_\_\_ FEET \_\_\_\_\_ INCHES \_\_\_\_\_ FEET \_\_\_\_\_ INCHES  
\_\_\_\_\_ FEET \_\_\_\_\_ INCHES \_\_\_\_\_ FEET \_\_\_\_\_ INCHES

RESULT AFTER TREATMENT \_\_\_\_\_  
ROCK PRESSURE AFTER TREATMENT \_\_\_\_\_  
Fresh Water \_\_\_\_\_ Feet \_\_\_\_\_ Salt Water \_\_\_\_\_ Feet \_\_\_\_\_

Formation	Color	Hard or Soft	Top	Bottom	Oil, Gas or Water	Depth	Remarks
					11-27-62 Installed 3 1/2" tubing at 3980' with a Larkin Upside down packer set at 3950'		
					11-29-62 Halliburton acidized the Big Six Sand. Pumped in 30 gals. of oil ahead of the 2,000 gals. of 15% regular acid used to treat the sand. Acid flushed with 1428 gals. of water.		
					11-30-62 Test 4:00 P.M. 339 MCF		
					12-5-62 Halliburton acidized the Big Six Sand with 3,000 gals. of 15% HCL. Used 38 bbls. of water to flush acid.		
					12-8-62 Test 5:00 P.M. 226 MCF		

