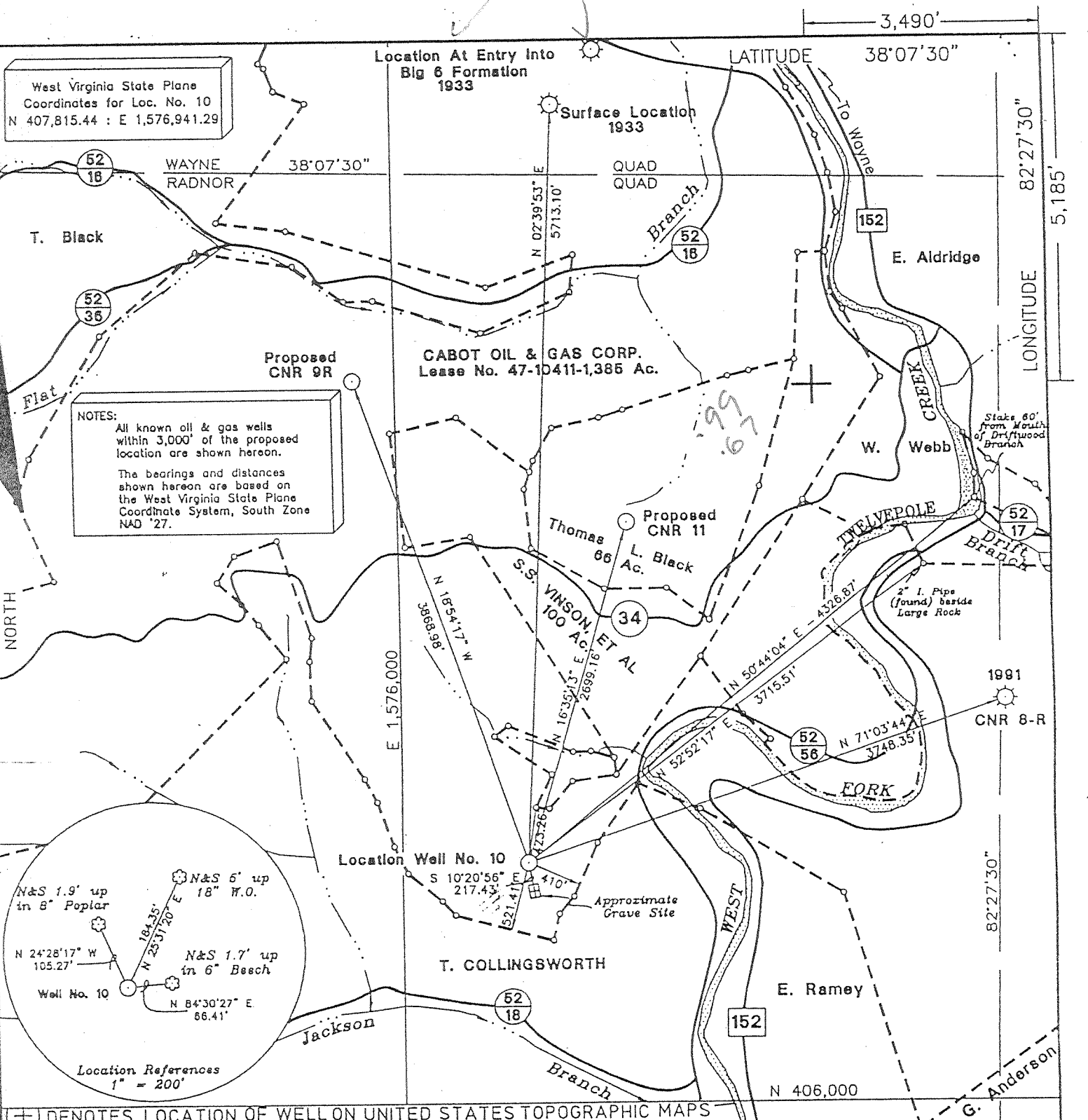
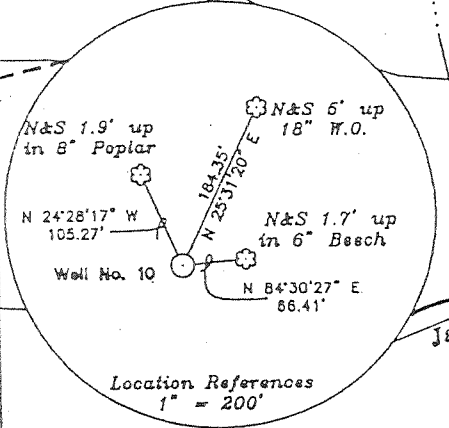


West Virginia State Plane
Coordinates for Loc. No. 10
N 407,815.44 : E 1,576,941.29



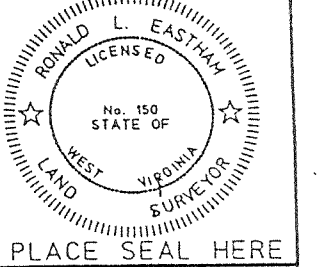
NOTES:
All known oil & gas wells within 3,000' of the proposed location are shown hereon.
The bearings and distances shown hereon are based on the West Virginia State Plane Coordinate System, South Zone NAD '27.



(+) DENOTES LOCATION OF WELL ON UNITED STATES TOPOGRAPHIC MAPS

FILE NO. 4711 WW
DRAWING NO. 10WW6
SCALE 1" = 1000'
MINIMUM DEGREE OF ACCURACY 1 : 8,172
PROVEN SOURCE OF ELEVATION U.S.G.S. BM "51RHP"
Elev. = 1025.634 NGVD '29

I THE UNDERSIGNED, HEREBY CERTIFY THAT THIS PLAT IS CORRECT TO THE BEST OF MY KNOWLEDGE AND BELIEF AND SHOWS ALL THE INFORMATION REQUIRED BY THE LAW AND THE REGULATIONS ISSUED AND PRESCRIBED BY THE DEPARTMENT OF ENERGY.
(SIGNED) Ronald L. Eastham
R.P.E. _____ L.L.S. 150



STATE OF WEST VIRGINIA
DIVISION OF ENVIRONMENTAL PROTECTION
OFFICE OF OIL AND GAS
NITRO, WV

DATE March 9 2000
OPERATOR'S WELL NO. 10
API WELL NO. 47-099-02035

WELL TYPE: OIL ___ GAS X LIQUID INJECTION ___ WASTE DISPOSAL ___
(IF "GAS,") PRODUCTION ___ STORAGE X DEEP X SHALLOW ___

LOCATION: ELEVATION 686.14 WATER SHED West Fork of Twelvepole Creek
DISTRICT Lincoln COUNTY Wayne
QUADRANGLE Radnor

SURFACE OWNER Judy Adkins Neal (D.B. 339, Pg. 177) ACREAGE 5
OIL & GAS ROYALTY OWNER Columbia Natural Resources, Inc. LEASE ACREAGE 1,385
LEASE NO. 47-10411

PROPOSED WORK: DRILL ___ CONVERT X DRILL DEEPER ___ REDRILL ___ FRACTURE OR
STIMULATE X PLUG OFF OLD FORMATION ___ PERFORATE NEW
FORMATION ___ OTHER PHYSICAL CHANGE IN WELL (SPECIFY) 6-6 353

PLUG AND ABANDON ___ CLEAN OUT AND REPLUG ___
TARGET FORMATION Big Six ESTIMATED DEPTH _____
WELL OPERATOR Cabot Oil & Gas Corp. DESIGNATED AGENT John Abshire
ADDRESS P.O. Box 454 ADDRESS P.O. Box 454
Glasgow, WV 25080 Glasgow, WV 25080

FORM WW-6 EASTHAM & ASSOCIATES

COUNTY NAME WAYNE PERMIT 2035

Deep Well

WR-35

Date: 24-Jul-00
API # 47-099-02035

State of West Virginia
Division of Environmental Protection
Section of Oil and Gas
Well Operator's Report of Well Work

RECEIVED
Office of Oil & Gas
Permitting
JUL 28 2000
WV Division of
Environmental Protection

Farm name: Adkins, Judy Operator Well No.: CNR # 10

LOCATION: Elevation: 686.14' Quadrangle: Radnor
District: Lincoln County: Wayne
Latitude: 5,185 feet South of 38 DEG. 07 MIN. 30 SEC.
Longitude: 3,490 feet West of 82 DEG. 27 MIN. 30 SEC.

Company: Cabot Oil & Gas Corporation
400 Fairway Drive: Suite 400
Coraopolis, PA 15108-4308

Casing & Tubing Size	Used in Drilling	Left in Well	Cement Fill up Cu. Ft.
16"	43'	43'	
9-5/8"	440.75'	440.75'	200 sks Class "A"
7"	1505.55'	1505.55'	240 sks Class "A"
4-1/2"	3764.10'	3764.10'	100 sks latex

Agent: John Abshire
Inspector: David Belcher
Permit Issued: 6/2/2000
Well Work Commenced: 6/15/2000
Well Work Completed: 7/18/00
Verbal Plugging
Permission granted on:
Rotary X Cable _____
Total Depth (feet) 3924'
Fresh Water Depths (ft) 60', 123'
Salt Water Depths (ft) 760', 860', 960'
Is coal being mined in area (Y / N)? _____
Coal Depths (ft) 189'-192', 243'-247'

OPEN FLOW DATA

Producing formation Big Six Pay zone depth (ft) 3699' - 3708'
Gas: Initial open flow 327 MCF/d Oil: Initial open flow N/A Bbl/d
Final open flow 292 MCF/d Final open flow N/A Bbl/d
Time of open flow between initial and final tests 4 Hours
Static rock pressure 1205 psig (surface pressure after 50 Hours

Second producing formation _____ Pay zone depth (ft) _____
Gas: Initial open flow _____ MCF/d Oil: Initial open flow _____ Bbl/d
Final open flow _____ MCF/d Final open flow _____ Bbl/d
Time of open flow between initial and final tests _____ Hours
Static rock pressure _____ psig (surface pressure after _____ Hours

NOTE: ON BACK OF THIS FORM PUT THE FOLLOWING: 1). DETAILS OF PERFORATED INTERVALS, FRACTURING OR STIMULATING, PHYSICAL CHANGE, ETC. 2). THE WELL LOG WHICH IS A SYSTEMATIC DETAILED GEOLOGICAL RECORD OF ALL FORMATIONS, INCLUDING COAL ENCOUNTERED BY THE WELLBORE.

For: CABOT OIL & GAS CORPORATION

By: Ray Rudnick, Jr.
Date: 7/24/00

WAY 2035

AUG 11 2000

OPEN FLOW DATA

Perf'd Big Six from 3699'-3708'. Pumped 500 gal 7.5% HCl and loaded hole with fluid. Pressured up to 4300 psi with no breakdown. Swabbed off fluid. Pumped 500 gal 28% HCl and loaded hole with fluid. BDP: 4293 psi. AIR: 11 BPM. ISIP: 2993 psi. Tried to foam frac with no success. Flowed well back. Filled annulus with 10 bbl FW. Established injection rate of 13 BPM @ 4000 psi with fluid. ISIP: 3220 psi. Frac'd with x-link gel system. 417 bbl fluid and 18,000# sand. Displaced with 38 bbl of fluid. ISIP: 3938 psi. ATP: 3975 psi. MTP: 4175 psi.

FORMATION	TOP	BOTTOM	REMARKS
Silt/Shale	0	712	
Sand	712	1058	
Shale	1058	1120	
Little Lime	1120	1160	
Big Lime	1160	1320	
Shale	1320	1410	
Injun	1410	1435	
Shale	1435	1930	
Berea	1930	2020	
Shale	2020	3027	
Onondaga	3027	3120	
Oriskany	3120	3130	
Limestone	3130	3235	
Dolomite	3235	3700	
Big Six	3700	3740	
Shale	3740	3924 - TD	