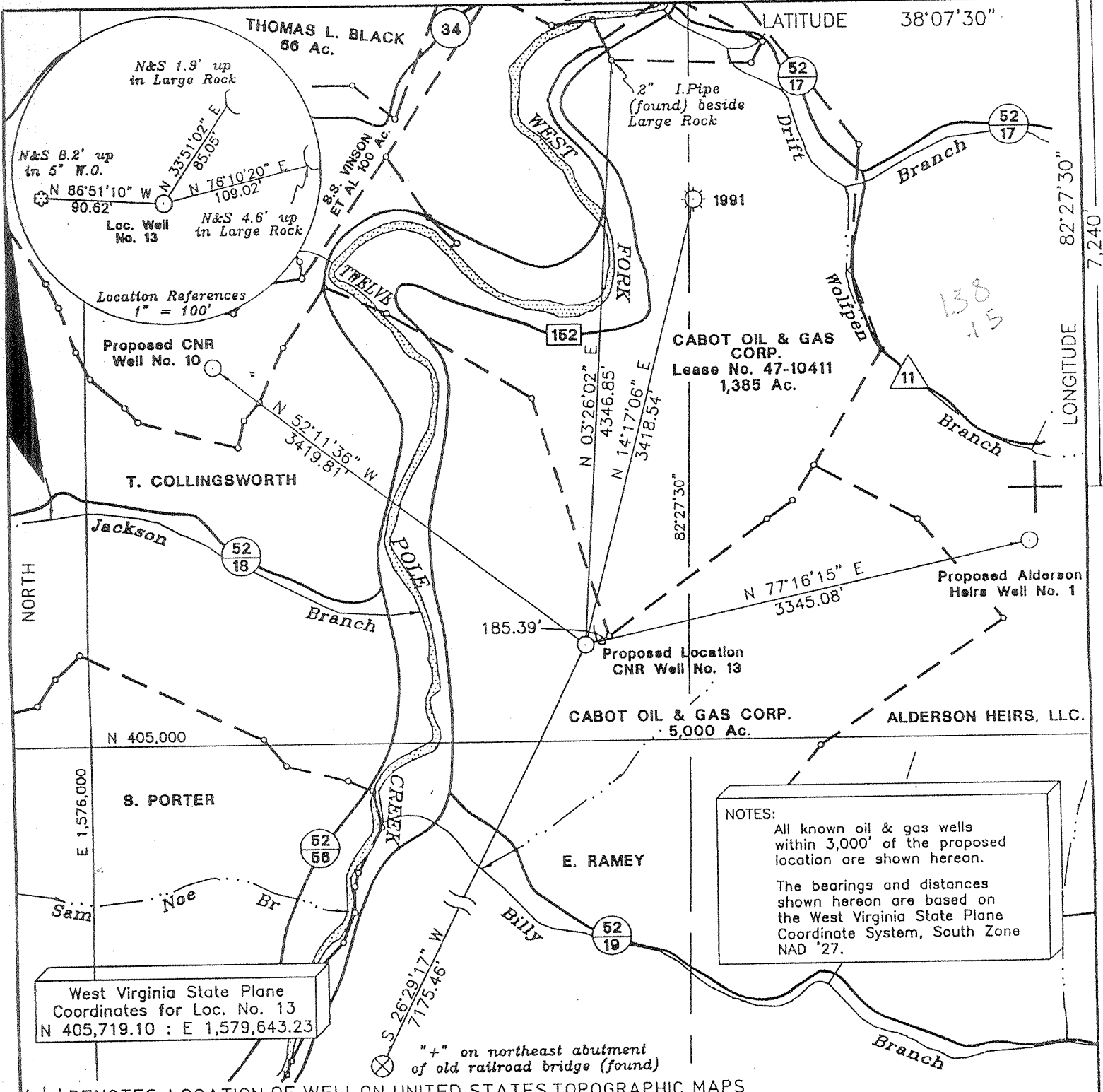


755'



NOTES:  
 All known oil & gas wells within 3,000' of the proposed location are shown hereon.  
 The bearings and distances shown hereon are based on the West Virginia State Plane Coordinate System, South Zone NAD '27.

West Virginia State Plane Coordinates for Loc. No. 13  
 N 405,719.10 : E 1,579,643.23

"+" on northeast abutment of old railroad bridge (found)

(+) DENOTES LOCATION OF WELL ON UNITED STATES TOPOGRAPHIC MAPS

FILE NO. 4869 WW  
 DRAWING NO. 13WW6  
 SCALE 1" = 1000'  
 MINIMUM DEGREE OF ACCURACY 1 : 45,727  
 PROVEN SOURCE OF ELEVATION U.S.C.&G.S. BM "F-149"  
Elev. = 644.88 NGVD '29

I THE UNDERSIGNED, HEREBY CERTIFY THAT THIS PLAT IS CORRECT TO THE BEST OF MY KNOWLEDGE AND BELIEF AND SHOWS ALL THE INFORMATION REQUIRED BY THE LAW AND THE REGULATIONS ISSUED AND PRESCRIBED BY THE DEPARTMENT OF ENERGY.  
 (SIGNED) Ronald L. Eastham  
 R.P.E. \_\_\_\_\_ L.L.S. 150

RONALD L. EASTHAM  
 LICENSED  
 No. 150  
 STATE OF  
 WEST VIRGINIA  
 LAND SURVEYOR  
 PLACE SEAL HERE

STATE OF WEST VIRGINIA  
 DIVISION OF ENVIRONMENTAL PROTECTION  
 OFFICE OF OIL AND GAS  
 NITRO, WV



DATE February 29, 2000  
 OPERATOR'S WELL NO. 13  
 API WELL NO. 47-099-02039  
 STATE COUNTY PERMIT

WELL TYPE: OIL \_\_\_ GAS X LIQUID INJECTION \_\_\_ WASTE DISPOSAL \_\_\_  
 (IF "GAS,") PRODUCTION \_\_\_ STORAGE \_\_\_ DEEP X SHALLOW \_\_\_  
 LOCATION: ELEVATION 1093.41 WATER SHED Billy Branch of the West Fork of Twelve Pole Creek  
 DISTRICT Lincoln COUNTY Wayne  
 QUADRANGLE Radnor  
 SURFACE OWNER Paul E. Lycans, et ux (D.B. 484, Pg. 808) ACREAGE 140 (T.M. 4, Par. 4)  
 OIL & GAS ROYALTY OWNER Columbia Natural Resources, Inc. LEASE ACREAGE 5,000

LEASE NO. \_\_\_\_\_  
 PROPOSED WORK: DRILL \_\_\_ CONVERT X DRILL DEEPER \_\_\_ REDRILL \_\_\_ FRACTURE OR STIMULATE \_\_\_ PLUG OFF OLD FORMATION \_\_\_ PERFORATE NEW FORMATION \_\_\_ OTHER PHYSICAL CHANGE IN WELL (SPECIFY) \_\_\_\_\_

PLUG AND ABANDON \_\_\_ CLEAN OUT AND REPLUG \_\_\_  
 TARGET FORMATION Big Six ESTIMATED DEPTH \_\_\_\_\_  
 WELL OPERATOR Cabot Oil & Gas Corp. DESIGNATED AGENT John Abshire  
 ADDRESS P.O. Box 454 ADDRESS P.O. Box 454  
 CLASSIFICATION DEEP WELL CLASSIFICATION WV 25080

OCT 27 2000

FORM WW-B

COUNTY NAME  
 PERMIT

State of West Virginia  
Division of Environmental Protection  
Section of Oil and Gas  
Well Operator's Report of Well Work

*Ar*

Farm name: Paul E. Lycans Operator Well No.: CNR #13

LOCATION: Elevation: 1093.41' Quadrangle: Radnor  
District: Lincoln County: Wayne  
Latitude: 7240' feet South of 38 DEG. 7 MIN. 30 SEC.  
Longitude: 755' feet West of 82 DEG. 27 MIN. 30 SEC.

Company: Cabot Oil & Gas Corporation  
900 Lee Street East, Suite 500  
Charleston, WV 25301

Agent: John Abshire  
Inspector: Dave Belcher  
Permit Issued: 10/23/00  
Well Work Commenced: 11/1/00  
Well Work Completed: 11/18/00  
Verbal Plugging: Yes  
Permission granted on: 11/16/00  
Rotary X Cable \_\_\_\_\_  
Total Depth (feet) 4299'  
Fresh Water Depths (ft) 57', 501', 603'  
Salt Water Depths (ft) 1120', 1210', 1460', 1500'

Casing & Tubing Size	Used in Drilling	Left in Well	Cement Fill up Cu. Ft.
13 3/8"	28'	28'	
9 5/8"	749'	749'	325 sks
7"	1990.4'	1990.4'	320 sks

Is coal being mined in area (Y / N)? \_\_\_\_\_  
Coal Depths (ft) 7'-8', 603'-607', 644'-646', 650'-657'

RECEIVED  
Office of Oil and Gas  
REGISTRATION  
JAN 18 2001  
WV Division of  
Environmental Protection

OPEN FLOW DATA

Producing formation Dry hole Pay zone depth (ft) \_\_\_\_\_  
Gas: Initial open flow \_\_\_\_\_ MCF/d Oil: Initial open flow \_\_\_\_\_ Bbl/d  
Final open flow \_\_\_\_\_ MCF/d Final open flow \_\_\_\_\_ Bbl/d  
Time of open flow between initial and final tests \_\_\_\_\_ Hours  
Static rock pressure \_\_\_\_\_ psig (surface pressure after \_\_\_\_\_ Hours

Second producing formation \_\_\_\_\_ Pay zone depth (ft) \_\_\_\_\_  
Gas: Initial open flow \_\_\_\_\_ MCF/d Oil: Initial open flow \_\_\_\_\_ Bbl/d  
Final open flow \_\_\_\_\_ MCF/d Final open flow \_\_\_\_\_ Bbl/d  
Time of open flow between initial and final tests \_\_\_\_\_ Hours  
Static rock pressure \_\_\_\_\_ psig (surface pressure after \_\_\_\_\_ Hours

NOTE: ON BACK OF THIS FORM PUT THE FOLLOWING: 1). DETAILS OF PERFORATED INTERVALS, FRACTURING OR STIMULATING, PHYSICAL CHANGE, ETC. 2). THE WELL LOG WHICH IS A SYSTEMATIC DETAILED GEOLOGICAL RECORD OF ALL FORMATIONS, INCLUDING COAL ENCOUNTERED BY THE WELLBORE.

For: CABOT OIL & GAS CORPORATION

By: Ray Rudrick Jr. - Operations Manager  
Date: 1-17-01

FEB 23 2001

DEEP WELL

WAY 2039

Plugged well upon TD & log evaluation;

Plugs set @ 4300'-4150', 6% gel, 4150'-4000' 25 sks latex cement , 4000'-3550' 6% gel, 3550'-3400' 25 sks latex cement, 3400'-2450' 6% gel, 2450'-2300' 18 sks Class A cement, 2300'-2050' 6% gel, 2050'-1950' 18 sks Class A cement, 1950'-1850' 6% gel, 850'-750' 18 sks Class A cement, 750'-100' 6% gel, 100'-0 18 sks Class A cement. Set monument.

FORMATION	TOP	BOTTOM	REMARKS
Silt/Shale	0	1046	FW 57', 501', 603
Sandstone	1046	1460	SW @ 1120', 1210', 1460'
Shale	1460	1540	SW @ 1500'
Big Lime	1540	1740	
Silt/Shale	1740	1820	
Injun	1820	1846	
Shale	1846	2348	
Berea	2348	2430	
Shale	2430	3432	
Onondaga	3432	3502	
Limestone	3502	3925	
Newburg	3925	3929	
Limestone	3929	4101	
Big Six	4101	4152	
Shale	4152	4299	

DEPT. OF ENVIRONMENTAL PROTECTION  
Office of Oil & Gas  
Permitting  
JAN 18 2001  
WV Division of  
Environmental Protection