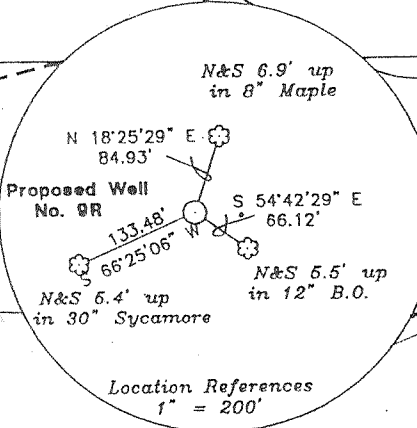


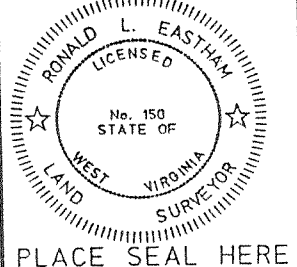
NOTES:
 All known oil & gas wells within 3,000' of the proposed location are shown hereon.
 The bearings and distances shown hereon are based on the West Virginia State Plane Coordinate System, South Zone NAD '27.



FILE NO. 4686 WW
 DRAWING NO. 9WW6-2
 SCALE 1" = 1000'
 MINIMUM DEGREE OF ACCURACY 1 : 19,811
 PROVEN SOURCE OF ELEVATION U.S.G.S. BM "51RHP"
 Elev. = 1025.634 NGVD '29

I THE UNDERSIGNED, HEREBY CERTIFY THAT THIS PLAT IS CORRECT TO THE BEST OF MY KNOWLEDGE AND BELIEF AND SHOWS ALL THE INFORMATION REQUIRED BY THE LAW AND THE REGULATIONS ISSUED AND PRESCRIBED BY THE DEPARTMENT OF ENERGY.

(SIGNED) Ronald L. Eastham
 R.P.E. _____ L.L.S. 150



STATE OF WEST VIRGINIA
DIVISION OF ENVIRONMENTAL PROTECTION
OFFICE OF OIL AND GAS
 NITRO, WV

DATE February 15 2001
 OPERATOR'S WELL NO. 9R
 API WELL NO. 47-099-02043
 STATE COUNTY PERMIT

WELL TYPE: OIL GAS LIQUID INJECTION WASTE DISPOSAL
 (IF "GAS,") PRODUCTION STORAGE DEEP SHALLOW

LOCATION: ELEVATION 839.07 WATER SHED Flat Branch of the West Fork of Twelvepole Creek
 DISTRICT Lincoln COUNTY Wayne
 QUADRANGLE Radnor

SURFACE OWNER Taylor Ferguson Heirs ACREAGE 16.66 (T.M. 1, Par. 44)
 OIL & GAS ROYALTY OWNER Columbia Natural Resources, Inc. LEASE ACREAGE 1,385
 LEASE NO. 47-10411

PROPOSED WORK: DRILL CONVERT DRILL DEEPER REDRILL FRACTURE OR STIMULATE PLUG OFF OLD FORMATION PERFORATE NEW FORMATION OTHER PHYSICAL CHANGE IN WELL (SPECIFY) _____

PLUG AND ABANDON CLEAN OUT AND REPLUG

TARGET FORMATION Big Six ESTIMATED DEPTH 3110 'APR 20 2001
 WELL OPERATOR Cabot Oil & Gas Corp. DESIGNATED AGENT John Abshire
 ADDRESS 900 Lee Street East, Suite 500 ADDRESS 900 Lee Street East, Suite 500
Charleston, WV 25301 Charleston, WV 25301

DEEP WELL 6-6 353

FORM WW-5 EASTHAM & ASSOCIATES

COUNTY NAME WAYNE PERMIT 2043

State of West Virginia
Division of Environmental Protection
Section of Oil and Gas
Well Operator's Report of Well Work

MP

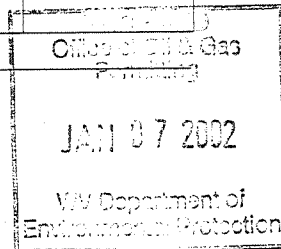
Farm name: Taylor Ferguson Heirs Operator Well No.: CNR #9R

LOCATION: Elevation: 839' Quadrangle: Radnor
District: Lincoln County: Wayne
Latitude: 1.135 feet South of 38 DEG. 7 MIN. 30 SEC.
Longitude: 5.550 feet West of 82 DEG. 27 MIN. 30 SEC.

Company: Cabot Oil & Gas Corporation
900 Lee Street East, Suite 500
Charleston, WV 25301

Agent: John Abshire
Inspector: David Belcher
Permit Issued: 4/20/01
Well Work Commenced: 6/13/01
Well Work Completed: 10/11/01
Verbal Plugging
Permission granted on:
Rotary Cable
Total Depth (feet) 3914'
Fresh Water Depths (ft) 138', 500'
Salt Water Depths (ft) 928', 1123', 1188'
Is coal being mined in area (Y / N)?
Coal Depths (ft) 76'-80', 354'-357', 430'-434'

Casing & Tubing Size	Used in Drilling	Left in Well	Cement Fill up Cu. Ft.
16"	45'	45'	
9-5/8"	631'	631'	240 sks
7"	1730'	1730'	310 sks
4-1/2"	Set on inflatable packer @ 3835'		60 sks Latex
2-3/8"		3849'	



OPEN FLOW DATA

Producing formation	BIG SIX	Pay zone depth (ft)	3857' - 3867'
Gas: Initial open flow	488 MCF/d	Oil: Initial open flow	0 Bbl/d
Final open flow	505 MCF/d	Final open flow	0 Bbl/d
Time of open flow between initial and final tests	N/A (TIL Rate)		Hours
Static rock pressure	1100 psig (surface pressure after	552	Hours

Second producing formation	Pay zone depth (ft)
Gas: Initial open flow	MCF/d Oil: Initial open flow Bbl/d
Final open flow	MCF/d Final open flow Bbl/d
Time of open flow between initial and final tests	Hours
Static rock pressure	psig (surface pressure after) Hours

NOTE: ON BACK OF THIS FORM PUT THE FOLLOWING: 1) DETAILS OF PERFORATED INTERVALS, FRACTURING OR STIMULATING, PHYSICAL CHANGE, ETC 2) THE WELL LOG WHICH IS A SYSTEMATIC DETAILED GEOLOGICAL RECORD OF ALL FORMATIONS, INCLUDING COAL ENCOUNTERED BY THE WELLBORE.

For: CABOT OIL & GAS CORPORATION

By: *Ray Prudinsky* Operations Manager
Date: 1/4/02

FEB 01 2002

WV 2043

Shot GAS GUN from 3857' to 3867' KB.

Spotted 36 bbl 15% HCl acid (MSR). Frac Big Six using 286,000 SCF N2 @ 6290 to 6200 SCF/min. BD 2979#. ISIP 2125#. ATP3320# @ 5 BPM foam. MTP 3914#. ISIP 3859#. 5 min 3703#. 10 min 3616#. Total fluid used including acid - 337 bbl clean. Pad 100% N2. MRS acid 10Q foam. Foam spacer 75Q foam. Total sand used in plug back 1818# 20/40 sand.

FORMATION	TOP	BOTTOM	REMARKS
Breathitt Fm	Surface	740	
Lee Fm (Salt Sand)	740	1137	
Pennington Fm	1137	1283	
Little Lime	1283	1320	
Big Lime	1320	1440	
Injun	1440	1620	
Borden	1620	2090	
Coffee Shale	2090	2099	
Berea	2099	2223	
Devonian Shale	2223	3183	
Corniferous Lime	3183	3855	
Big Six	3855	3914' TD	

