

OK JWA

11,720'

LATITUDE 38°15'00"

LONGITUDE 96°25'00"

NORTH

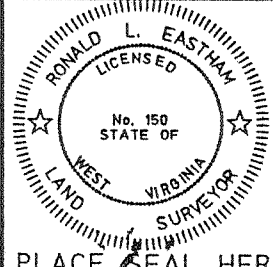
Toms

(+) DENOTES LOCATION OF WELL ON UNITED STATES TOPOGRAPHIC MAPS

FILE NO. 5058 WW
 DRAWING NO. 1WW6
 SCALE 1" = 500'
 MINIMUM DEGREE OF ACCURACY 1 : 19,328
 PROVEN SOURCE OF ELEVATION U.S.C.&G.S. BM "S-146"
Elev. = 609.39 NGVD '29

I THE UNDERSIGNED, HEREBY CERTIFY THAT THIS PLAT IS CORRECT TO THE BEST OF MY KNOWLEDGE AND BELIEF AND SHOWS ALL THE INFORMATION REQUIRED BY THE LAW AND THE REGULATIONS ISSUED AND PRESCRIBED BY THE DEPARTMENT OF ENERGY.

(SIGNED) Ronald L. Eastham
 R.P.E. _____ L.L.S. 150



PLACE SEAL HERE

STATE OF WEST VIRGINIA
DIVISION OF ENVIRONMENTAL PROTECTION
OFFICE OF OIL AND GAS
CHARLESTON, WV



DATE May 24, 2001
 OPERATOR'S WELL NO. 1
 API WELL NO.

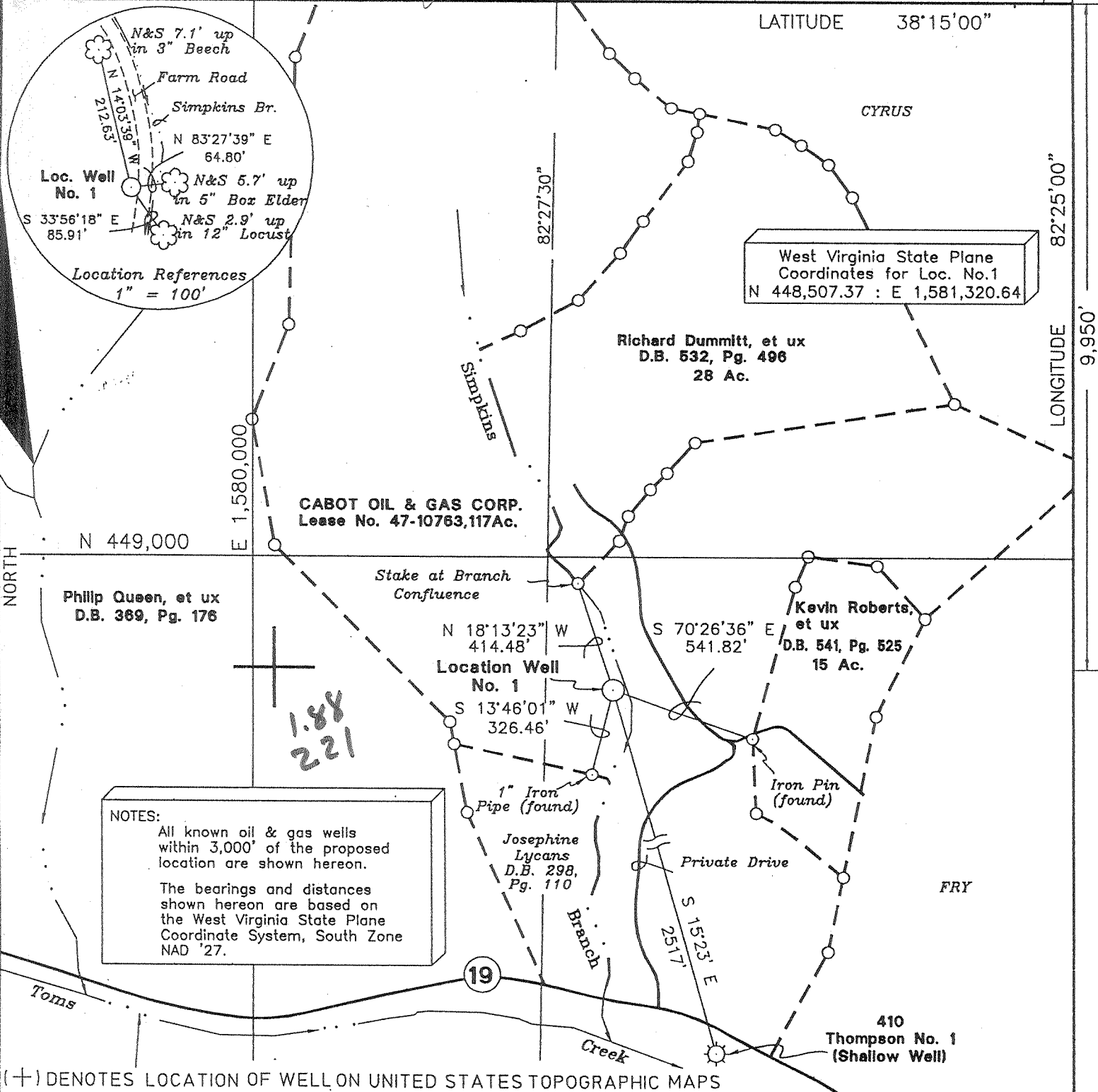
47-099-02048
 STATE COUNTY PERMIT

WELL TYPE: OIL ___ GAS X LIQUID INJECTION ___ WASTE DISPOSAL ___
 (IF "GAS,") PRODUCTION ___ STORAGE ___ DEEP X SHALLOW ___
 LOCATION: ELEVATION 631.45 WATER SHED Simpkins Branch of Toms Creek of the West Fork of Tweepole Creek
 DISTRICT Union COUNTY Wayne
 QUADRANGLE Wayne

SURFACE OWNER Samuel Fredrick Keck (T.M. 31, Par. 18) ACREAGE 117 (W.B. 25, Pg. 715)
 OIL & GAS ROYALTY OWNER Samuel Fredrick Keck LEASE ACREAGE 117 (W.B. 13, Pg. 215)
 LEASE NO. 47-10763

PROPOSED WORK: DRILL X CONVERT ___ DRILL DEEPER ___ REDRILL ___ FRACTURE OR STIMULATE ___
X PLUG OFF OLD FORMATION ___ PERFORATE NEW FORMATION ___ OTHER PHYSICAL CHANGE IN WELL (SPECIFY) _____

PLUG AND ABANDON ___ CLEAN OUT AND REPLUG ___
 TARGET FORMATION Big Six ESTIMATED DEPTH 3860'
 WELL OPERATOR Cabot Oil & Gas Corp. DESIGNATED AGENT John Abshire
 ADDRESS 900 Lee Street East, Suite 500 ADDRESS 900 Lee Street East, Suite 500
Charleston, WV 25301 Charleston, WV 25301



NOTES:
 All known oil & gas wells within 3,000' of the proposed location are shown hereon.
 The bearings and distances shown hereon are based on the West Virginia State Plane Coordinate System, South Zone NAD '27.

West Virginia State Plane Coordinates for Loc. No.1
 N 448,507.37 : E 1,581,320.64

Richard Dummitt, et ux
 D.B. 532, Pg. 496
 28 Ac.

CABOT OIL & GAS CORP.
 Lease No. 47-10763,117Ac.

Phillip Queen, et ux
 D.B. 369, Pg. 176

Kevin Roberts, et ux
 D.B. 541, Pg. 525
 15 Ac.

Location Well No. 1
 N 18°13'23" W 414.48'
 S 13°46'01" W 326.46'

Josephine Lycans
 D.B. 298, Pg. 110

1.88
 2.21

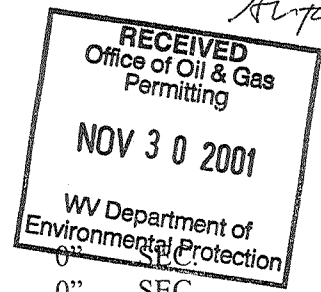
COUNTY NAME WAYNE
 PERMIT 2048

DEEP WELL

3-0 229

Date: October 4, 2001
API # 47-099-02048

State of West Virginia
Division of Environmental Protection
Section of Oil and Gas
Well Operator's Report of Well Work



Farm name: Samuel F. Keck

Operator Well No.: Keck #1

LOCATION: Elevation: 631' Quadrangle: Wayne
District: Union County: Wayne
Latitude: 11,720' feet South of 38° DEG. 15' MIN.
Longitude: 9,950' feet West of 82° DEG. 25' MIN. 0" SEC.

Company: Cabot Oil & Gas Corporation
900 Lee Street East, Suite 500
Charleston, WV 25301

Agent: John Abshire
Inspector: David Belcher
Permit Issued: 7/25/01
Well Work Commenced: 8/16/01
Well Work Completed: 8/26/01
Verbal Plugging YES
Permission granted on: 8/25/01
Rotary X Cable _____
Total Depth (feet) 3873'
Fresh Water Depths (ft) 30', 78', 228'
Salt Water Depths (ft) 700', 842', 1013', 1191'
Is coal being mined in area (Y / N)? _____
Coal Depths (ft) 140'-144', 178'-183', 250'-252'

Casing & Tubing Size	Used in Drilling	Left in Well	Cement Fill up Cu. Ft.
20"		36'	
9 5/8"		532'	373 sks
7"		1544'	260 sks
VERBAL	PLUG	VERBAL	PLUG

OPEN FLOW DATA

Producing formation _____ Pay zone depth (ft) _____
Gas: Initial open flow _____ MCF/d Oil: Initial open flow _____ Bbl/d
Final open flow _____ MCF/d Final open flow _____ Bbl/d
Time of open flow between initial and final tests _____ Hours
Static rock pressure _____ psig (surface pressure after _____ Hours

Second producing formation _____ Pay zone depth (ft) _____
Gas: Initial open flow _____ MCF/d Oil: Initial open flow _____ Bbl/d
Final open flow _____ MCF/d Final open flow _____ Bbl/d
Time of open flow between initial and final tests _____ Hours
Static rock pressure _____ psig (surface pressure after _____ Hours

NOTE: ON BACK OF THIS FORM PUT THE FOLLOWING: 1). DETAILS OF PERFORATED INTERVALS, FRACTURING OR STIMULATING, PHYSICAL CHANGE, ETC. 2). THE WELL LOG WHICH IS A SYSTEMATIC DETAILED GEOLOGICAL RECORD OF ALL FORMATIONS, INCLUDING COAL ENCOUNTERED BY THE WELLBORE.

For: CABOT OIL & GAS CORPORATION DEC 07 2001
By: Ray Rudnick Operations Manager
Date: 11-30-01

Deep well

WAY 2048

FORMATION	TOP	BOTTOM	REMARKS
Breathitt Fm	Surface	683	
Lee Fm (Salt Sand)	683	1020	
Pennington Fm	1020	1080	
Little Lime	1080	1104	
Big Lime	1104	1270	
Injun	1270	1414	
Borden	1414	1890	
Coffee Shale	1890	1900	
Berea	1900	2031	
Devonian Shale	2031	3038	
Corniferous Lime	3038	3754	
Big Six	3754	3796	
Rose Hill	3796	3873' TD	