

WELL NO. 3MH
STATE PLANE COORDINATES
(SOUTH ZONE NAD '27)
N. 618,690
E. 2,151,837

WELL NO. 3MH (NAD 27)
LAT=(N) 38.69787
LONG=(W) 80.46870

WELL NO. 3MH (NAD 27)
LAT=(N) 38°41'52.9"
LONG=(W) 80°28'07.3"

UTM (NAD 83) (METERS)
N. 4,283,395
E. 546,218

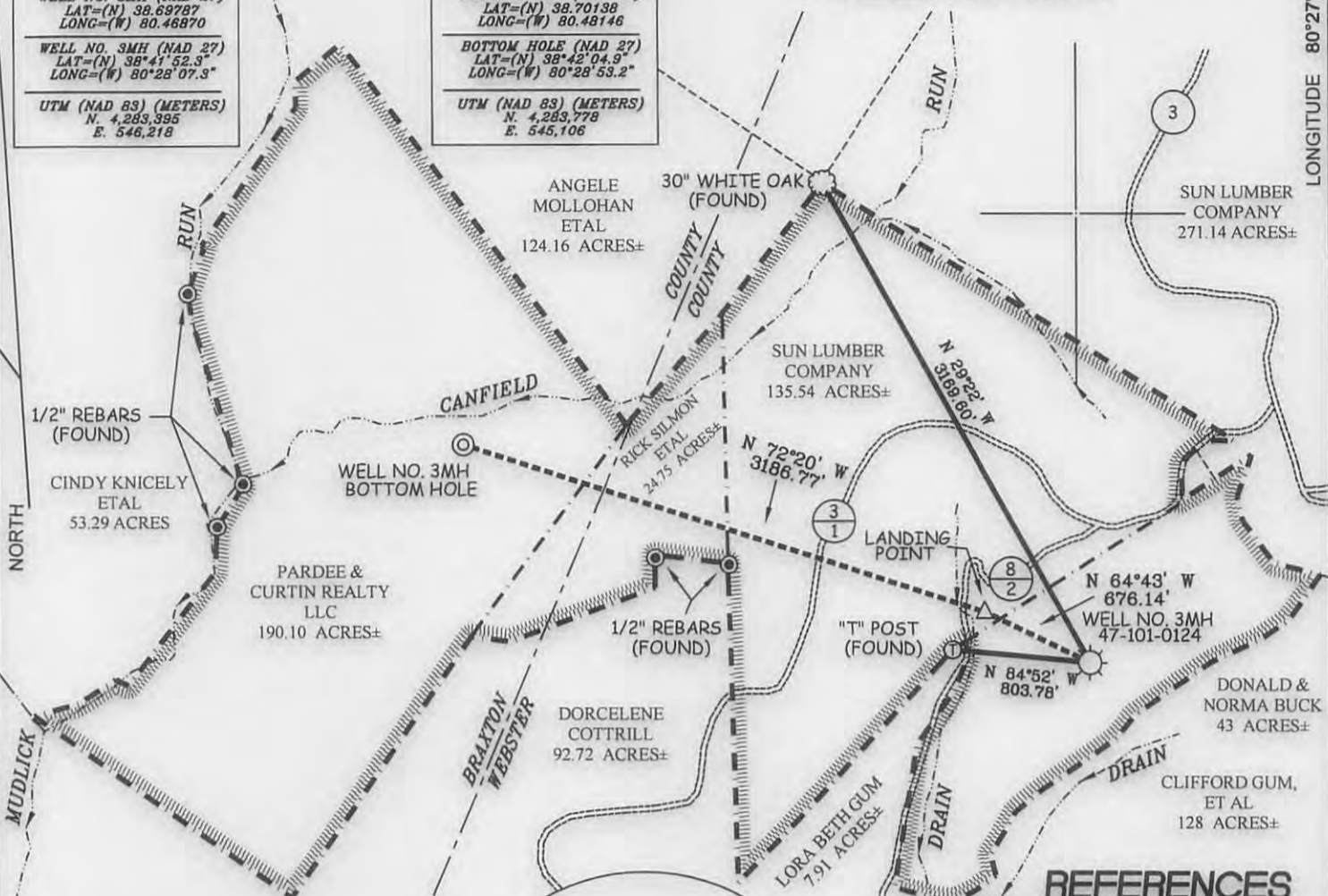
BOTTOM HOLE
STATE PLANE COORDINATES
(SOUTH ZONE NAD '27)
N. 619,946
E. 2,147,989

BOTTOM HOLE (NAD 27)
LAT=(N) 38.70138
LONG=(W) 80.48146

BOTTOM HOLE (NAD 27)
LAT=(N) 38°42'04.9"
LONG=(W) 80°28'53.2"

UTM (NAD 83) (METERS)
N. 4,283,778
E. 545,106

SUN LUMBER COMPANY LEASE WELL NO 3MH



NOTES ON SURVEY

1. TIES TO WELLS, REFERENCES, AND CORNERS ARE BASED ON GRID NORTH FOR THE WV STATE PLANE COORDINATE SYSTEM SOUTH ZONE NAD '27.
2. LEASE BOUNDARY SHOWN HEREON TAKEN FROM MISC. BOOK 9 PAGE 271 AND ADJOINING DEEDS.
3. SURFACE OWNER AND ADJOINER INFORMATION TAKEN FROM THE ASSESSOR AND COUNTY CLERK RECORDS OF WEBSTER & BRAXTON COUNTIES IN JULY, 2012.
4. WELL COORDINATES ESTABLISHED BY DGPS (SURVEY GRADE).



I THE UNDERSIGNED, HEREBY CERTIFY THAT THIS PLAT IS CORRECT TO THE BEST OF MY KNOWLEDGE AND BELIEF AND SHOWS ALL THE INFORMATION REQUIRED BY LAW AND THE REGULATIONS ISSUED AND PRESCRIBED BY THE DIVISION OF ENVIRONMENTAL PROTECTION.


P.S. 677
Gregory A. Smith



(+) DENOTES LOCATION OF WELL ON UNITED STATES TOPOGRAPHIC MAPS.
DATE AUGUST 6, 20 13
OPERATORS WELL NO. 3MH
API WELL NO. 47-101-00124 **HGA MOD**
STATE 47 COUNTY 101 PERMIT 00124

MINIMUM DEGREE OF ACCURACY 1 / 200 FILE NO. 7616P3MHR(422-66)
PROVEN SOURCE OF ELEVATION DGPS (SURVEY GRADE) SCALE 1" = 1,000'

STATE OF WEST VIRGINIA
DIVISION OF ENVIRONMENTAL PROTECTION
OFFICE OF OIL AND GAS



WELL TYPE: OIL GAS LIQUID INJECTION WASTE DISPOSAL IF "GAS" PRODUCTION STORAGE DEEP SHALLOW

LOCATION: ELEVATION 1,786' WATERSHED LEFT FORK OF HOLLY RIVER
DISTRICT HACKER VALLEY COUNTY WEBSTER QUADRANGLE HACKER VALLEY 7.5'

SURFACE OWNER DONALD & NORMA BUCK ACREAGE 43±
ROYALTY OWNER DONALD & NORMA BUCK, ET AL LEASE ACREAGE 43, 135.54, 24.75, & 190.10±

PROPOSED WORK: DRILL CONVERT DRILL DEEPER REDRILL FRACTURE OR STIMULATE PLUG OFF OLD FORMATION PERFORATE NEW FORMATION PLUG AND ABANDON CLEAN OUT AND REPLUG OTHER

PHYSICAL CHANGE IN WELL (SPECIFY) _____ TARGET FORMATION MARCELLUS
ESTIMATED DEPTH 6,825'

WELL OPERATOR ENERGY CORPORATION OF AMERICA DESIGNATED AGENT RODNEY A. WINTERS
ADDRESS 501 56TH STREET S.E. ADDRESS 501 56TH STREET S.E.
CHARLESTON, WV 25304 CHARLESTON, WV 25304

01/10/2014