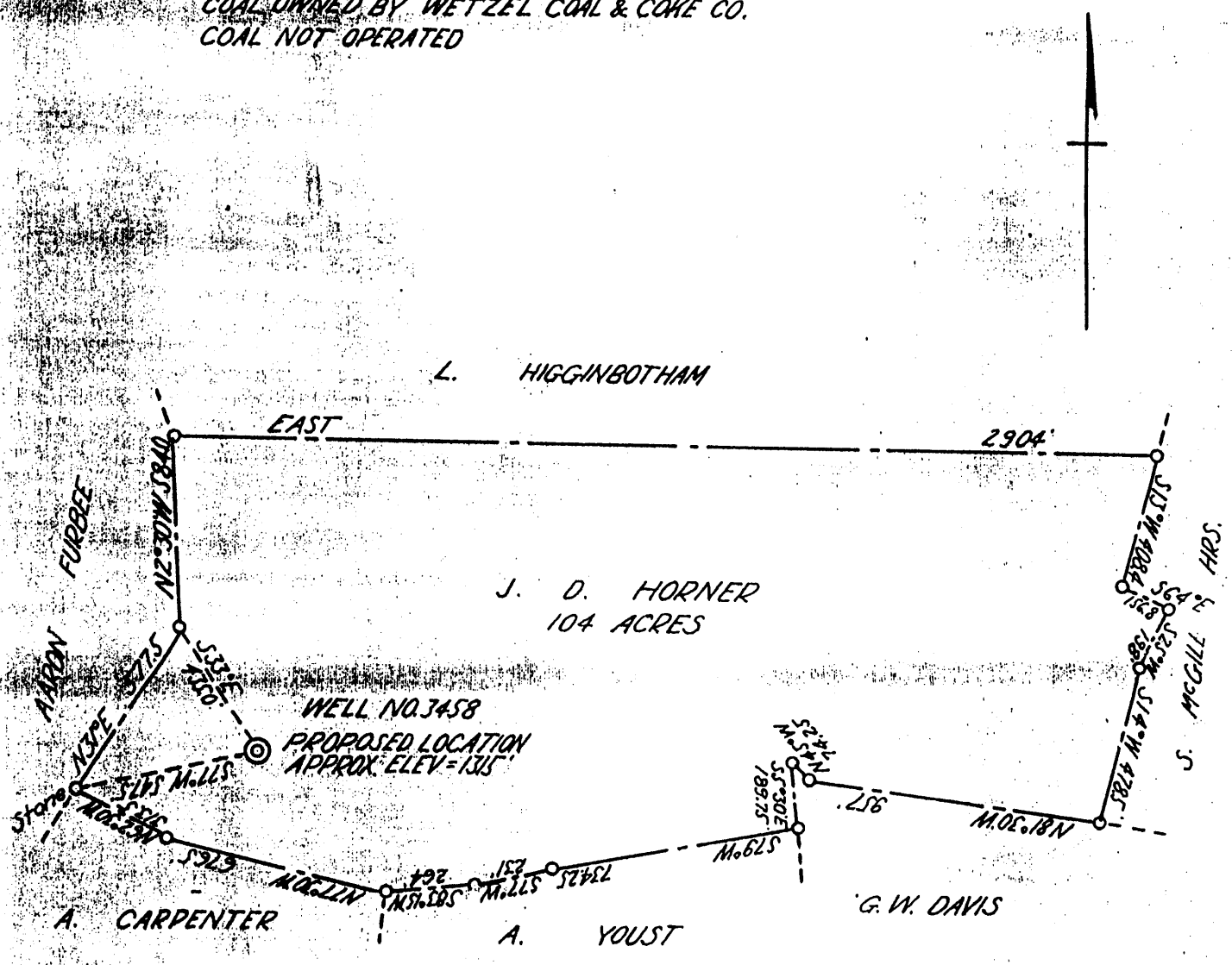


3 A 3

PLAT OF THE PROPOSED LOCATION OF WELL NO. 3458 OF THE MANUFACTURERS LIGHT & HEAT CO. OF PITTSBURGH, PA. ON THE J. D. HORNER FARM CONSISTING OF 104 ACRES LOCATED IN CHURCH DISTRICT, WETZEL COUNTY, W. VA.

NOTE:

COAL OWNED BY WETZEL COAL & COKE CO. COAL NOT OPERATED



103-0735
now 103-49

ENGINEERS CERTIFICATE

I, THE UNDERSIGNED, HEREBY CERTIFY THAT THIS MAP IS CORRECT AND SHOWS ALL THE INFORMATION, TO THE BEST OF MY KNOWLEDGE AND BELIEF, REQUIRED BY THE OIL AND GAS SECTION OF THE MINING LAWS OF WEST VIRGINIA.

Donald K. Bell
ENGINEER

ACKNOWLEDGED BEFORE ME A NOTARY PUBLIC OF AND FOR ALLEGHENY COUNTY, STATE OF PENNSYLVANIA THIS 26 DAY OF Sept. 1930

HARRY H. FOWLER Notary Public
COMMISSION EXPIRES

Harry H. Fowler

LATITUDE 393730

80208

LONGITUDE

0-0615
7.5' loc

7.5 OGIS topo location

7.5' loc	<u>0.96S</u>	15' loc	<u>3.84S</u>
	<u>1.29W</u>	(calc.)	<u>3.51W</u>

Company _____

Farm _____

Quad Glover Gap Mannington ^{WC}

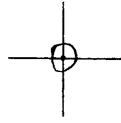
County _____

District Church

WELL LOCATION MAP

File No. Wetzel 39

LATITUDE 39° 37' 30"



80° 27' 30"
LONGITUDE

7'5 OGIS topo location

7.5' loc 0.95S 15' loc _____
 ' 1.28W (calc.) _____

Company _____

Farm _____

Quad GLOVER GAP 7 1/2'

County WETZEL

District CHURCH

WELL LOCATION MAP

File No. 103 - 0735

now 103-39

(047)

Church District, Wetzel County, W. Va.

By The Manufacturers Light & Heat Co., Pittsburgh, Pa (800 Union Tr. Bldg.
On 10 1/2 acres, surface owned by J. D. Horner Heirs, Glovers Gap, W. Va.,
and minerals by Fisher Oil Co. and The Manufacturers Light & Heat Co.
(See assignment No. 309).

Drilled under permit ~~Wat-39~~, issued Oct. 9, 1930.

Elevation, 1315' B.

13" conductor, 16'; 10" casing, 310' 10"; 8", 1537' 9"; 6", 2288' 10".

Coal was encountered at 640-643, 700-703, 945-950, and 1050-1057'.

Completion reported to Dept. of Mines Jan. 22, 1931

Well was not shot.

No water. Gas well.

Record to RCT from Mrs. Griffith Aug. 30, 1938.

	Top.	Bottom.	Thickness.
Clay, yellow, soft	0	15	15
Slate, dark, soft	15	100	85
Limestone, white, hard	100	150	50
Slate, dark, soft	150	325	175
Sand, light, hard	325	400	75
Slate, black, soft	400	550	150
Sand, dark, hard	550	600	50
Slate, dark, soft	600	640	40
✓ Coal, black, soft	640	643	3
Slate and lime, dark and white, hard and soft	643	700	57
✓ Fairview (Waynesburg) Coal, black, soft	700	703	3
Bluff Sand, dark, hard	703	715	12
Limestone, white, hard	715	735	20
Slate, dark, soft	735	820	85
Limestone, white, hard	820	945	125
✓ Hapletown (Sewickley) Coal, dark, soft	945	950	5
Limestone, white, hard	950	1050	100
✓ Pittsburgh Coal, black, soft	1050	1057	7
Slate, dark, soft	1057	1075	18
Limestone, white, hard	1075	1125	50
Sand, hard	1125	1190	65
Slate, dark, soft	1190	1200	10
Sand, dark, hard	1200	1225	25
Slate, dark, soft	1225	1250	25
Red rock, soft	1250	1252	2
Slate, dark, soft	1252	1327	75
Red rock, soft	1327	1345	18
Slate, dark, soft	1345	1429	74
✓ Little Dunkard Sand, white, hard	1429	1460	31
Slate, dark, soft	1460	1525	65
✓ Big Dunkard Sand, white, hard	1525	1575	50
Slate, dark, soft	1575	1600	25
Limestone, white, hard	1600	1700	100
Slate and shells, dark, hard and soft	1700	1730	30
✓ Gas Sand, dark, hard	1730	1760	30
Slate, dark, soft	1760	1800	40
✓ 1st Salt Sand, white, hard (gas at 1827)	1800	1841	41
Slate, dark, soft	1841	1850	9
✓ 2nd Salt Sand, white, hard	1850	1912	62
Slate, black, soft	1912	1950	38
Limestone, white, hard	1950	2030	80
✓ 3rd Salt Sand, white, hard	2030	2078	48

(OVER)

	Top.	Bottom.	Thickness.
Slate, dark, soft	2078	2120	42
Limestone, white, hard	2120	2153	33
Red rock, soft	2153	2175	22
Slate and shells, dark, hard	2175	2208	33
✓ Little Lime, white, hard	2208	2223	15
✓ Pencil Cave, dark, soft	2223	2238	15
Lime, white, hard	2238	2243	5
Slate, dark, soft	2243	2249	6
✓ Big Lime, white, hard	2249	2327	78
✓ Big Injun Sand, white, hard (gas at 2357-2395')	2327	2520	193
Slate and shells, white, hard	2520	2620	100
✓ Squaw Sand, white, hard	2620	2660	40
Slate, dark, soft	2660	2700	40
Slate and shells, white, soft	2700	2800	100
Slate, dark, soft	2800	2850	50
Slate and shells, dark, hard and soft	2850	2950	100
Slate, dark, soft	2950	2990	40
Slate and shells, dark, hard and soft	2990	3018	28
✓ 50-Ft. Sand, white, hard (gas, 3020- 3030')	3018	3030	12
Slate, dark, soft	3030	3060	30
✓ 30-Ft. Sand, white, broken	3060	3080	20
Slate, dark, soft	3080	3089	9
Red rock, soft	3089	3092	3
✓ Gordon Stray Sand, white, hard (gas, 3110')	3092	3114	22
Slate, dark, soft	3114	3131	17
✓ Gordon Sand, white, hard (oil, 3168')	3131	3191	60
Slate, dark, soft	3191	3210	19
✓ 4th Sand, white, hard (gas, 3218')	3210	3230	20
Total depth		3245	

Division Four

Record of Well No. 3458

on J.D. Harner

Hundred Field

Church

District
Troy

Metzel

Farm 104

County W. Va.

Acres
State

Rig Commenced Oct. 23rd. 1923

Completed Oct. 31st. 1930 192

Drilling Commenced Nov. 24th. 1930 192

Completed Jan. 17th. 1931 192

Cost per Foot

Contractor Ullom & Burson

Address Hundred, W. Va.

Drillers' Names George Gidley & A.L. Butcher

BOILER			ENGINE			RIG			
H. P.	No.	Name of Maker	H. P.	No.	Name of Maker	New	Old	Height	Name of Builder
							Yes	81'	Company

CONDUCTOR AND CASING USED IN DRILLING									
Conductor	12 inch	10 inch	8 1/2 inch	6 1/2 inch	6 inch	5 1/2 inch	5 1/4 inch	5 inch	4 inch
5'		810'-10"	1537'-9"	2288'-10"					

CONDUCTOR AND CASING LEFT IN WELL									
Conductor	12 inch	10 inch	8 1/2 inch	6 1/2 inch	6 inch	5 1/2 inch	5 1/4 inch	5 inch	4 inch
6'		810'-10"	1537'-9"	2288'-10"					

OIL WELL						GAS WELL				Rock Press
When Shot	Size of Torpedo	1st Day's Production	Tubing	Rods	Tanks	Size of Packer	Depth Set	Packed with	1st Minute Pressure	
									4 1/2	198

FORMATION			Top	Bottom	Thickness
Clay	soft	✓	0	15	15
Slate	soft		15	100	85
Limestone	hard		100	150	50
Slate	soft		150	325	175
Sand	hard		325	400	75
Slate	soft		400	550	150
Sand	hard		550	600	50
Slate	soft		600	640	40
Coal	soft		640	643	3
Slate & Lime			643	700	57
Fairview coal	soft	✓	700	703	3
Bluff sand	hard	✓	703	715	12
Limestone	hard		715	735	20
Slate	soft		735	820	85
Limestone	hard		820	945	125
Mapletown coal	soft		945	950	5
Limestone	hard	✓	950	1050	100
Pitts. Coal	soft	✓	1050	1057	7
Slate	dark soft		1057	1075	18
Limestone	hard		1075	1125	50
Sand	hard		1125	1190	65
Slate	soft		1190	1200	10
Sand	hard		1200	1225	25
Slate	soft		1225	1250	25
Red rock	soft		1250	1252	2
Slate	soft		1252	1327	75
Red rock	soft		1327	1345	18
Slate	soft		1345	1429	74
Little Dark	hard		1429	1400	31
Slate	soft		1575	1600	25
Lime	hard		1600	1700	100
Slate & shells			1700	1730	30

Steel Line at 1057'

103-0735

Gas sand	hard	1730	1760	30
Slate	soft	1760	1800	40
1st. salt sand	hard	1800	1841	41
Slate	soft	1841	1850	9
2nd salt sand	hard	1850	1912	62
Slate	soft	1912	1950	38
Limestone	hard	1950	2030	80
3rd. salt sand	hard	2030	2078	48
Slate	soft	2078	2120	42
Limestone	hard	2120	2153	33
Red rock	soft	2153	2175	22
Slate & Shells		2175	2208	33
Little Lime	hard	2208	2223	15
Pencil Cave	soft	2223	2238	15
Lime	hard	2238	2243	5
Slate	soft	2243	2249	6
Big Lime	hard	2249	2327	78
Big Injun sand	hard	2327	2520	193
Squaw sand	hard	2620	2660	40
Slate	soft	2660	2700	40
Slate & Shells		2700	2800	100
Slate	soft	2800	2850	50
Slate & Shells		2850	2950	100
Slate	soft	2950	2990	40
Slate & Shells		2990	3018	28
50 foot sand		3018	3030	12

Show of gas @ 1827

103-0735

Page 2

Gas @ 2357 to 2395 Test 20/10 water in 2"

Show of gas @ 3020

Slate	soft	3030	3060	30
30 foot sand	hard	3060	3080	20
Slate	soft	3080	3089	9
Red rock	soft	3089	3092	3
Gorden XXXX Stray		3092	3114	22
Slate	soft	3114	3131	17
Gorden sand	hard	3131	3191	60
Slate	soft	3191	3210	19
4th sand	hard	3210	3230	20

Show of gas 3110'

Little oil & Gas @ 3168'

Gas @ 3218' Test 20/10 water in 3" opening

Total Depth 3245

480,000 cu. ft.

Handwritten signature
 DIVISION Supt.