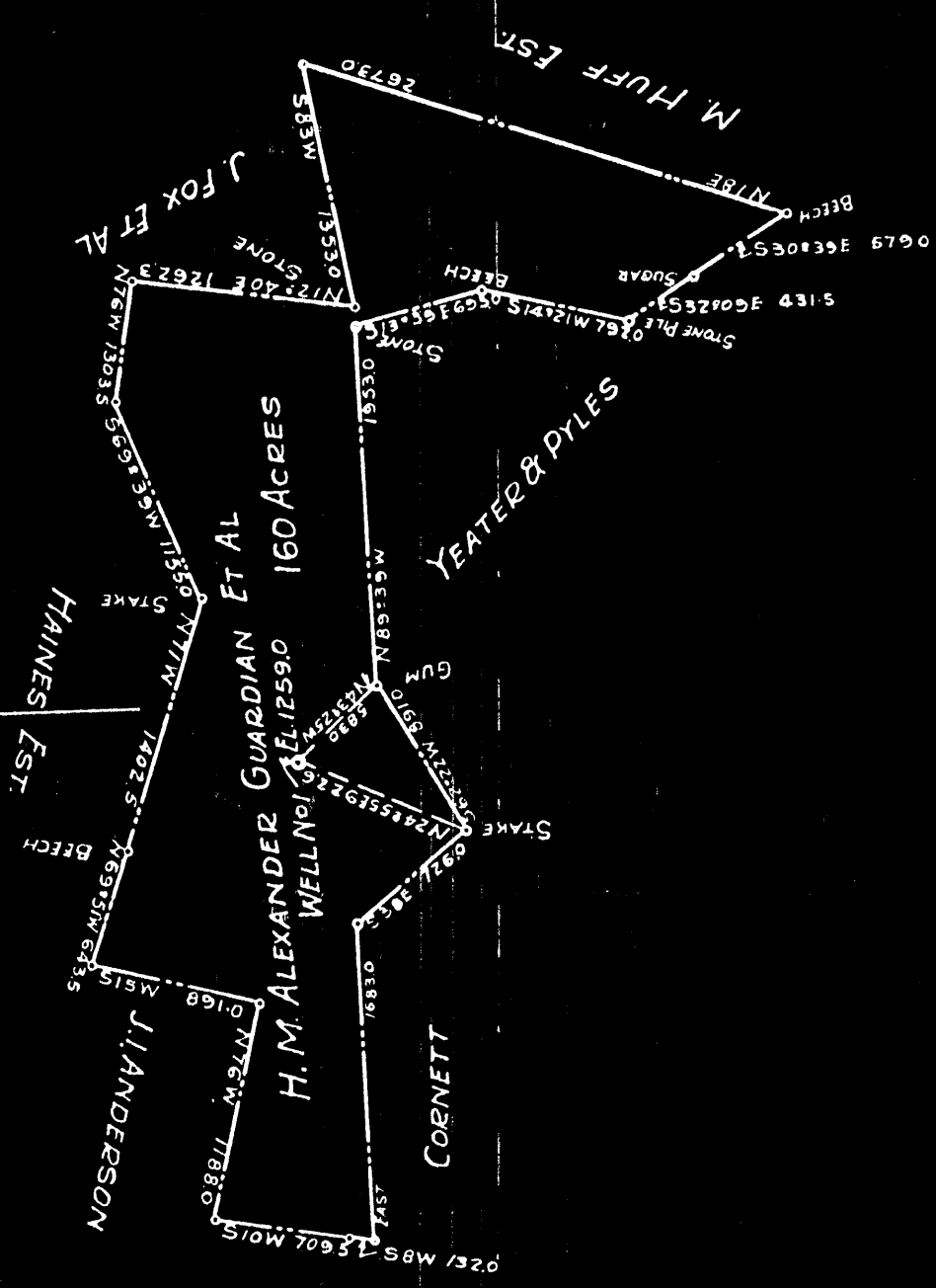


PLAT OF PROPOSED LOCATION OF WELL NUMBER ONE OF RAY V. HENNEN TRUSTEE. OF MORGANTOWN, W.VA., ON THE H. M. ALEXANDER GUARDIAN ET AL FARM, CONSISTING OF 160 ACRES. LOCATED IN MAGNOLIA DISTRICT, WETZEL COUNTY.

WET. 49



I, the undersigned, hereby certify that this Map is correct and shows all the information to the best of my knowledge and belief, required by the Oil and Gas section of the Mining Laws of West Virginia

Joe A. Barritt Engineer.

State of West Virginia }  
County of Monongalia } S.S.

Acknowledged before me a Notary Public this 15<sup>th</sup> day of December 1930

Wayne Cox  
My commission Expires July 21, 1933.

SCALE 1"=1000'

674-1000  
Wet

LATITUDE 394230

80 50

LONGITUDE

→ 7.5'  
loc  
date 7/3/91

7.5 OGIS topo location

7.5' loc	<u>1.43S</u>	15' loc	<u>4.31S</u>
	<u>0.47W</u>	(calc.)	<u>0.47W</u>

Company \_\_\_\_\_

Farm \_\_\_\_\_

Quad NewMartinsville 15' loc

County \_\_\_\_\_

District Magnolia

WELL LOCATION MAP

File No. Wet 49

Magnolia District, Wetzel County, W. Va.  
By Ray V. Hennen, Trustee, Morgantown, W. Va.  
Well was not shot.

Fresh water at 945 and 1010-1030'. Dry hole.

Small gas show found in Big Injun Sand at 2188' has entirely exhausted  
and by lighting a newspaper and putting it in the hole the same  
refused to ignite on several tests.

Preliminary data sheet missing.

Drilled under permit Wet-49 (issued 1930)?

Completion reported to Dept. of Mines March 2, 1931.

Record to RCT from Mrs. Griffith Aug. 30, 1938.

	Top.	Bottom.	Thickness.
Clay, yellow, soft	0	15	15
Lime, white	15	25	10
Slate, dark	25	60	35
Lime, white, hard	60	73	13
Slate, light, soft	73	100	27
Lime, gritty, hard	100	125	25
Slate, dark, soft	125	160	35
Lime, light, hard	160	190	30
Slate, dark, soft	190	230	40
Lime, light, hard	230	260	30
Slate, dark, soft	260	297	37
Red rock	297	320	23
Lime, gritty, hard	320	340	20
Slate, light, soft	340	370	30
Lime, white, hard	370	380	10
Slate, dark, soft	380	400	20
Lime, white, hard	400	430	30
Red rock	430	445	15
Slate, dark, soft	445	500	55
Lime, gray, hard	500	520	20
Shale, hard	520	565	45
Bluff Sand, hard	565	600	35
Slate, gray, soft	600	640	40
Red rock, soft	640	650	10
Lime, white	650	660	10
Slate, dark, soft	660	675	15
Lime, dark, hard	675	705	30
Red rock	705	715	10
Lime, light, hard	715	790	75
Slate, light, soft	790	813	23
Coal, Mapletown (Sewickley)	813	815	2
Slate, dark	815	885	70
Slate, black	885	909	24
Coal, Pittsburgh	909	914	5
Slate, dark	914	925	11
Lime, shells, hard	925	935	10
Sand, gray	935	965	30
Slate, dark, soft	965	1010	45
Sand, light, hard	1010	1030	20
Red rock	1030	1120	110
Shale, gray	1120	1140	20
Lime, light, hard	1140	1150	10
Red rock	1150	1155	5
Lime, light, hard	1155	1190	35
Slate, dark, soft	1190	1200	10
Red rock	1200	1226	26

(OVER)

	Top.	Bottom.	Thickness.
Lime, hard	1226	1255	29
Lime, gritty	1255	1280	25
Coal	1280	1283	3
Shale, light	1283	1302	19
Red rock	1302	1317	15
Lime, light	1317	1355	38
Shale, dark, soft	1355	1370	51
Shale, light, soft	1370	1390	20
Slate, dark, soft	1390	1405	15
Slate, dark, soft	1405	1415	10
Shells, gritty, soft	1415	1418	3
Lime, white, hard	1418	1495	77
Sand, gray, hard	1495	1524	29
Lime, white, hard	1524	1545	21
First Salt Sand <i>Gas Sand</i>	1545	1590	45
Shale, dark, soft	1590	1646	56
2nd Salt Sand	1646	1665	19
Slate, dark, soft	1665	1670	5
Sand, hard	1670	1715	45
Slate, light, soft	1715	1750	35
3rd Salt Sand	1750	1790	40
Slate, dark, soft	1790	1830	40
Slate, dark, soft	1830	1860	30
Shells and slate, soft	1860	1960	100
Big Lime	1960	2008	48
Big Injun Sand	2008	2223	215
(small gas show, now completely exhausted), 2188-2189'			
Slate	2223	2270	47
Lime, light, hard	2270	2315	45
Shells, dark, soft	2315	2350	35
Lime shells	2350	2385	35
Sand, gray	2385	2415	30
Lime shells, light	2415	2440	25
Sand, hard	2440	2460	20
Slate, soft	2460	2500	40
Lime shells, hard	2500	2540	40
Slate, dark, soft	2540	2560	20
Lime shells, gray	2560	2610	50
Slate, dark, soft	2610	2665	55
Red rock	2665	2710	45
Slate, dark	2710	2725	15
Lime, white, hard	2725	2740	15
Slate and shells	2740	2814	74
Lime, hard	2814	2823	9
Slate, dark, soft	2823	2846	23
Lime, gray, hard	2846	2865	19
Red rock	2865	2870	5
Slate, dark, soft	2870	2888	18
Lime shells	2888	2911	23
Sand, light, hard	2911	2925	14
Slate and shells	2925	3063	138
Lime shells, gray, hard	3063	3090	27
Slate, dark, soft	3090	3110	20
Slate, dark	3110	3150	40
Lime, light, hard	3150	3200	50
Slate, dark, soft	3200	3235	35
Slate, dark, soft	3235	3275	40
Lime, light, hard	3275	3285	10
Slate and shells	3285	3333	48
Lime, hard, gray (CONTD. ON MARGIN)	3333	3360	27

40  
60  
20  
20  
40  
30  
20  
83  
18

3420  
3480  
3500  
3520  
3560  
3590  
3610  
3693  
3711  
3711

3360  
3420  
3480  
3500  
3520  
3560  
3590  
3610  
3693

Slate, dark, soft  
Slate, dark, soft  
Lime, white  
Slate, dark, soft  
Lime, white, hard  
Slate, dark  
Lime, light, hard  
Slate, dark, soft  
Slate, dark, soft  
Total depth