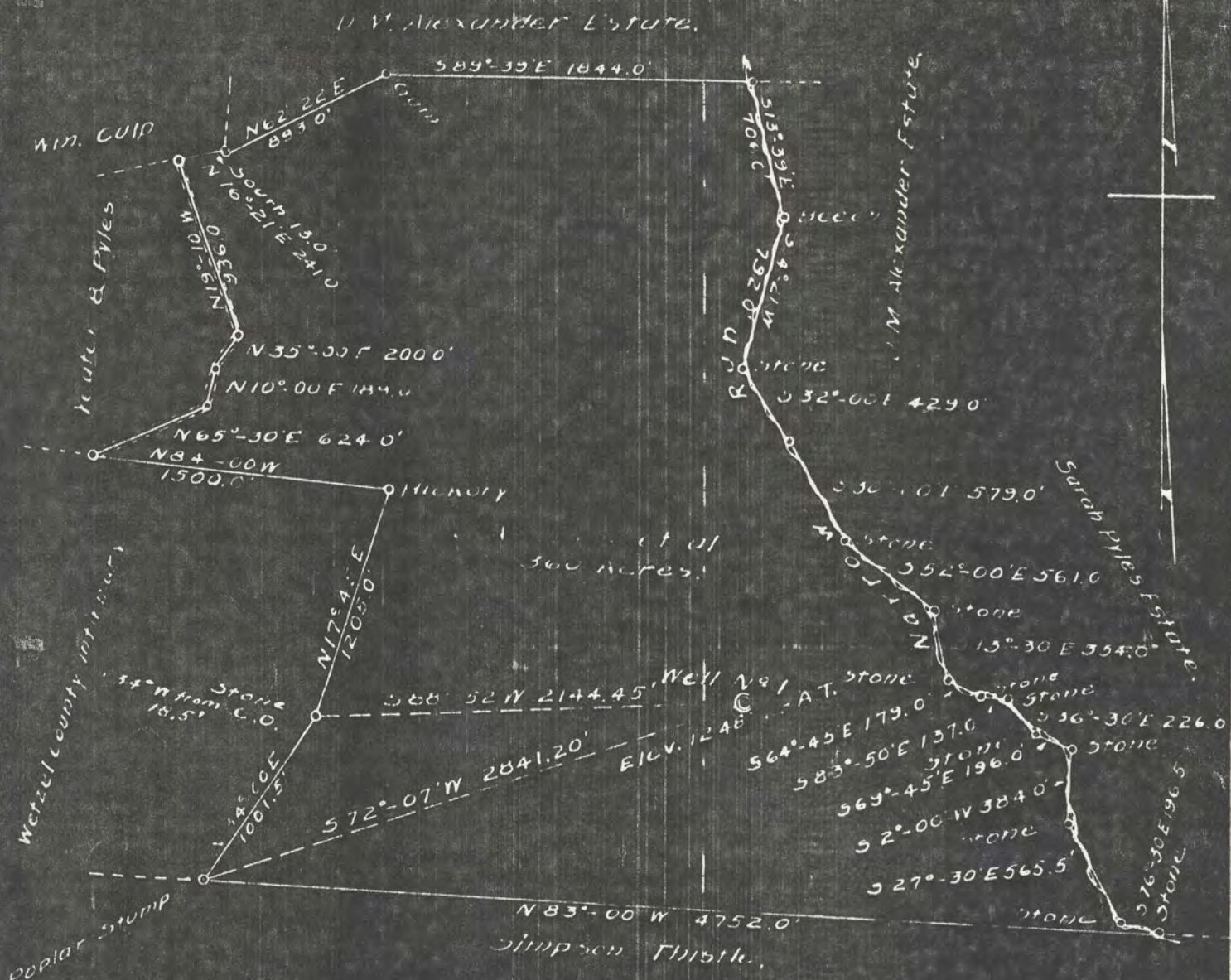


Plat of the Proposed Location of Well No. 1 of the
 Ray V. Hennen, Trustee, of Morgantown, W. Va. on the
 J. A. Pyles et al Farm, consisting of 360 Acres
 Located in Magnolia District, Wetzel County.

Scale: 1" = 800'



Engineer's Certificate.

I the undersigned, hereby certify that this Map is correct and shows all the information to the best of my knowledge and belief required by the oil and gas section of the Mining Laws of West Virginia.

Engineer.

Acknowledged before me a

this _____ day of _____ 1931.

LATITUDE 394230

0508

LONGITUDE

7.5' loc
7/3/91

7.5 OGIS topo location

7.5' loc	<u>2.045</u>	15' loc	<u>4.095</u>
	<u>0.05W</u>	(calc.)	<u>0.05W</u>

Company _____

Farm _____

Quad New Martinsville 15' NC

County _____

District Magnolia

WELL LOCATION MAP

File No. Wcf 57

Magnolia District, Wetzel County, W. Va.
By Hannibal Gas Co., Morgantown, W. Va.
Commenced April 13, 1931, 11:15 a. m.; completed, May 24, 1931.
Plugged June 19, 1931. Gas show. Dry hole.
Elevation, 1248' L.
10" casing, 326'; 8", 1415'; 6", 1990'.
Shot May 24, 1931, at 11:30 a. m., with 30 qts., between 2848-2854'.
On 360 acres.
Located on east side of American Ridge, west of Haynes Run, 2.27 mi.
S. W. of Proctor; 5.0 mi. S. of 39° 45' and 0.05 mi. W. of
80° 50' - NC - New Martinsville Quadrangle.
Record as made up from log strip from NWI by RGT Sept. 20, 1938.

WET-57

	Top.	Bottom.
Soil, dark	0	25
Slate, light	25	45
Lime, light	45	70
Slate	70	100
Lime, light	100	110
Red rock	110	140
Lime, light	140	200
Red rock	200	230
Lime, light	230	295
Red rock	295	308
Lime, light	308	328
Lime, dark	328	345
Red rock	345	390
Lime, white	390	424
Slate, dark	424	439
Lime, white	439	450
Lime, white	450	479
Coal, Washington	479	480
Slate, dark	480	489
Lime, white	489	562
Sand, bluish	562	580
Slate, dark (4-17-31)	580	600
Slate, dark	600	632
Red rock	632	639
Lime, light	639	663
Coal, Uniontown	663	667
Lime, light	667	715
Red rock	715	722
Lime	722	817
Coal, Sewickley	817	819
Lime, light	819	850
Slate, light	850	870
Lime, light	870	880
Slate, dark	880	900
Lime, light	900	905
Coal, Pittsburgh (elev. top, +343')	905	910
Lime, light	910	938
Sand, white	938	968
Lime, light	968	990
Slate, dark	990	1000
Sand, light	1000	1010
Lime, light	1010	1053
Red rock	1053	1063
Lime, light	1063	1090

(OVER)

	Top.	Bottom.		Top.	Bottom.
Red rock	1090	1100	Sand, Big Injun (2:30 p.m., 5-13-31)	2038	2138
Lime, light	1100	1140	Sand, Big Injun (1:30 p.m., 5-14-31)	2138	2200
Slate, dark	1140	1147	Sand, Big Injun (eleva. base, -97 1/2')	2200	2222
Lime, light	1147	1160	Lime, light	2222	2300
Lime, light	1160	1178	Slate, dark	2300	2367
✓ Coal, Harlow	1178	1180	Lime, gray, gritty	2367	2390
Slate, dark	1180	1200	Lime, gritty (3:30 p.m., 5-16-31)	2390	2410
✓ Sand, hard, light, Little Dunkard (Hammondville)	1205	1217	Lime, shells	2410	2425
Slate, dark	1217	1222	Lime, shells	2425	2460
Sand, light	1222	1235	Slate, dark	2460	2470
Red rock	1235	1241	Lime, gritty	2470	2480
Slate, dark	1241	1265	Slate, dark	2480	2510
Lime	1265	1284	Lime, light (4:00 p.m., 5-19-31)	2510	2535
✓ Coal (Up. Ppt.) Bakerstown	1284	1285	Lime, light	2535	2550
Slate, dark	1285	1295	Slate, dark	2550	2584
Lime shells, light	1295	1350	Lime, gritty	2584	2594
Slate, dark	1350	1393	Slate, dark	2594	2610
Red rock	1393	1397	Lime, light (2:30 p.m., 5-20-31)	2610	2620
Slate and shells	1397	1410	Slate, dark	2620	2630
Lime, light, very hard (8 1/2" casing, 1/15')	1410	1500	Lime, light	2630	2664
Sand, white	1500	1525	Red rock	2664	2669
Lime, light	1525	1555	Lime	2669	2675
✓ Sand, white, 1st Salt	1555	1575	Slate	2675	2698
Sand, white, 1st Salt (3:00 p.m., 4-29-31)	1575	1590	Red rock	2698	2720
Slate, dark	1590	1655	Slate	2720	2731
✓ Sand, 2nd Salt (2:00 p.m., 4-30-31) (salt water, 1658-60', 1 bailer per hour)	1655	1660	Lime	2731	2750
Sand, 2nd Salt	1660	1690	Slate	2750	2790
Sand, 2nd Salt, white	1690	1712	Lime	2790	2797
Slate, dark, and shells (2:30 p.m., 5-1-31)	1712	1810	Slate	2797	2803
Slate, dark, and shells	1810	1850	Lime, hard, and shells	2803	2827
✓ Sand, white 2nd Salt	1850	1890	Lime, hard, and shells	2827	2846
Slate, dark	1890	1900	✓ Sand, hard (first gas, 50' 2830', 105,000 cu. ft.) (shot 5-24-31, at 2848-2854', 30 qts., 115 H.)	2846	2871
✓ Sand, light, Norton (5 bailers salt water per hour at 1910-1917')	1900	1924	Slate?	2871	2906
Sand, light, Norton	1924	1929	Lime, gritty, slate, and shells (5-24-31)?	2906	2928
Slate and shells	1929	1970	Total depth		2928
✓ Lime, light (Big Line)	1970	1977			
Lime (Big Line) (6 1/2" casing, 1990')	1977	2017			
✓ Sand, Big Injun (eleva. top, -769') (SLM, 2017') (gas show, oil smell, and 1/3 bailer water per hour) (15 bbls. oil and 1 bkr. water after standing, 2017-20')	2017	2020			
Sand, Big Injun (shot down for 10 days for fuel, 5-6-31)	2020	2038			

Gordon Sand gas well, 105,000 cu. ft.