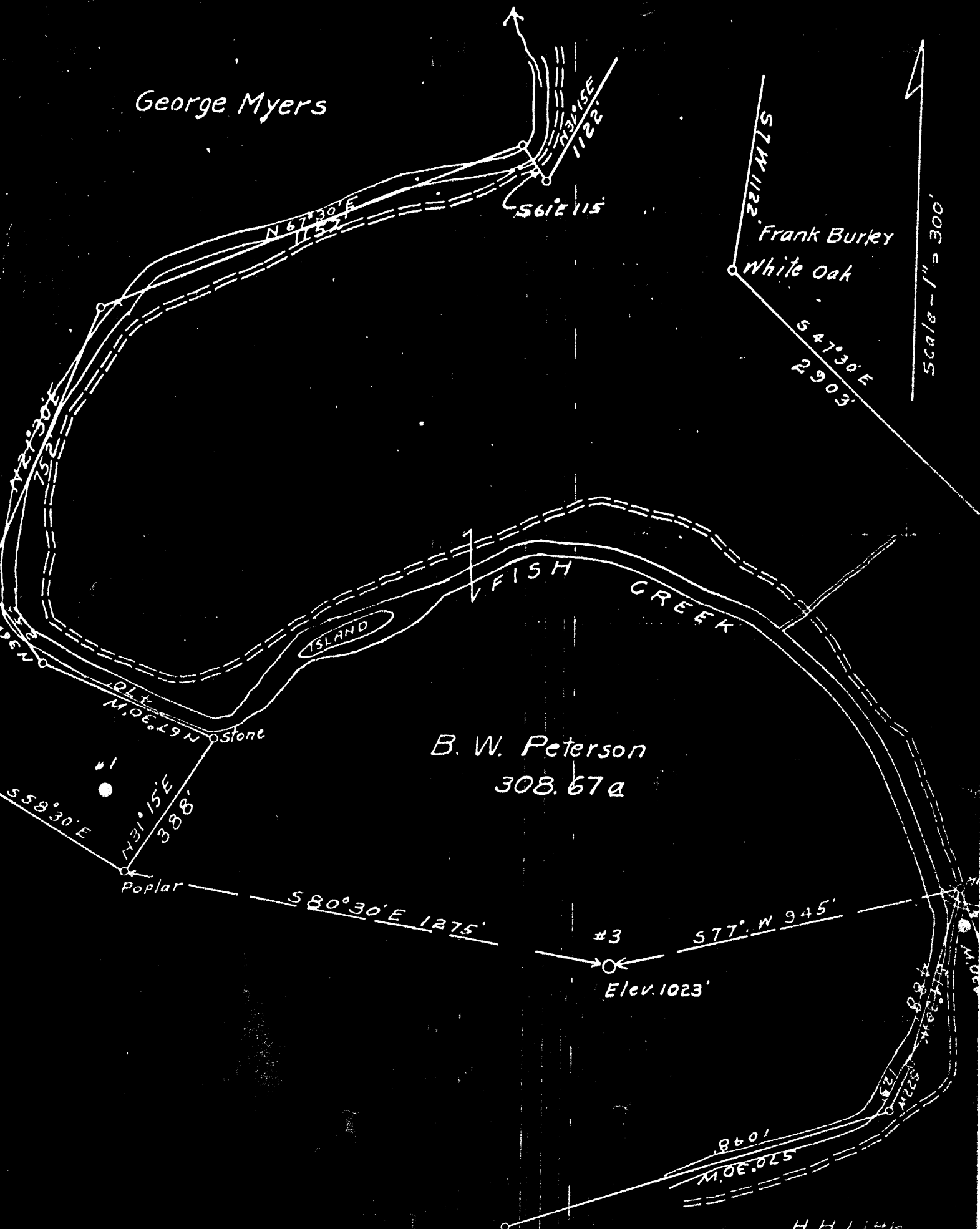


Plat of Location No. 3 Johns Gas Company, on the B. W. Peterson farm, consisting of 308.67 acres. Located on Fish Creek, Clay District Wetzel County, West Virginia. An old well to be drilled down.



I, the undersigned, hereby certify that this map is correct and shows all the information to the best of my knowledge and belief, required by the oil and gas section of the Mining Laws of West Virginia.

H. H. Little Engineer.

Witness my hand and seal before me a Notary Public, this 5th day of July 1905.

Notary Public.

LATITUDE

3945

803230

LONGITUDE

LONGITUDE

0 → OGIS 7.5' loc

7.5 OGIS topo location

7.5' loc 2375
460W

15' loc 2375
(calc.) 3.82W

Company _____

Farm _____

LOCATION MAP

Quad Littleton N15'09

County _____

District Center

WELL LOCATION MAP

File No. Wet 96

W. B. PETERSON NO. 3 WELL.

Center

.....District, Metzels County, W. Va.

By Johns Gas Co.

Elevation.....

Rigged up July 23, 1923.

Drilling commenced July 26, 1923; completed Aug. 30, 1923.

Second drilling commenced June 13, 1935; completed July 25, 1935.

10" casing, 215' (pulled); 8" 1358'; 6" 2077'.

Shot with 15 qts. Nov. 14, 1928.

Initial production, 3 bbls. day.

Making both oil and gas.

6" hole was drilled to 2919'. Cemented up to 2702'. Drilled 5" hole through cement, leaving cement shoulder at 2702'.

Record in Eastern Petroleum Co. Well Record book of Clifton Oil & Gas Co.

WET-96 (1)

	Top.	Bottom.
Mapletown (Sewickley) Coal	750	- 755
Pittsburgh Coal (water, 1 bailer)	853	- 858
Little Dunkard Sand	1195	- 1245
Big Dunkard Sand	1363	- 1395
First Salt Sand (gas, 1762'; 2 bailers water, 1772')	1710	- 1790
Second Salt Sand	1830	- 1880
Maxton Sand	1905	- 1935
Little Line	2014	- 2020
Pencil Cave	2020	- 2025
Zig Line	2025	- 2070
Zig Injun Sand (gas, 2090-2097') (oil and gas, 2172-2180')	2070	- 2320
Squaw Sand	2370	- 2382
Gantz Sand	2670	- 2685
Shells	2825	- 2833
Gordon Stray Sand	2870	- 2884
Gordon Sand (gas and oil, 2932-2936')	2916	- 2941
Total depth (first drilling)		2189
Total depth (second drilling) by our line		2935
Total depth (second drilling) by contractor's line		2941

2942
2189

753

Clay District, Wetsel County, W. Va.
 By Johns Gas Co., Parkersburg, W. Va.
 On 309 acres.

Drilled under permit Wet-96, issued June 11, 1935.

Elevation, 1023' B.

8" casing, 1358'; 6", 2037'.

Additional tubing used in well after drilled deeper, 874' of 2".

Completion (deepening) reported to Dept. of Mines Sept. 17, 1935.

Drilling deeper started June 13, 1935; completed, July 25, 1935.

Well was not shot.

Producing hole. (Oil and gas?)

Record to RCT from Mrs. Griffith Sept. 2, 1938.

	Top.	Bottom.	Thickness.
Big Injun Sand	2070	- 2320	250
Squaw Sand	2370	- 2382	12
Gentz Sand	2670	- 2685	15
30-Ft. Sand, shall	2825	- 2833	8
Gordon Stray Sand	2870	- 2884	14
Gordon Stray Sand (Gordon)	2916	- 2941	25
(gas, 2932-2935') (oil, 2934-2936')			
Total depth			2941