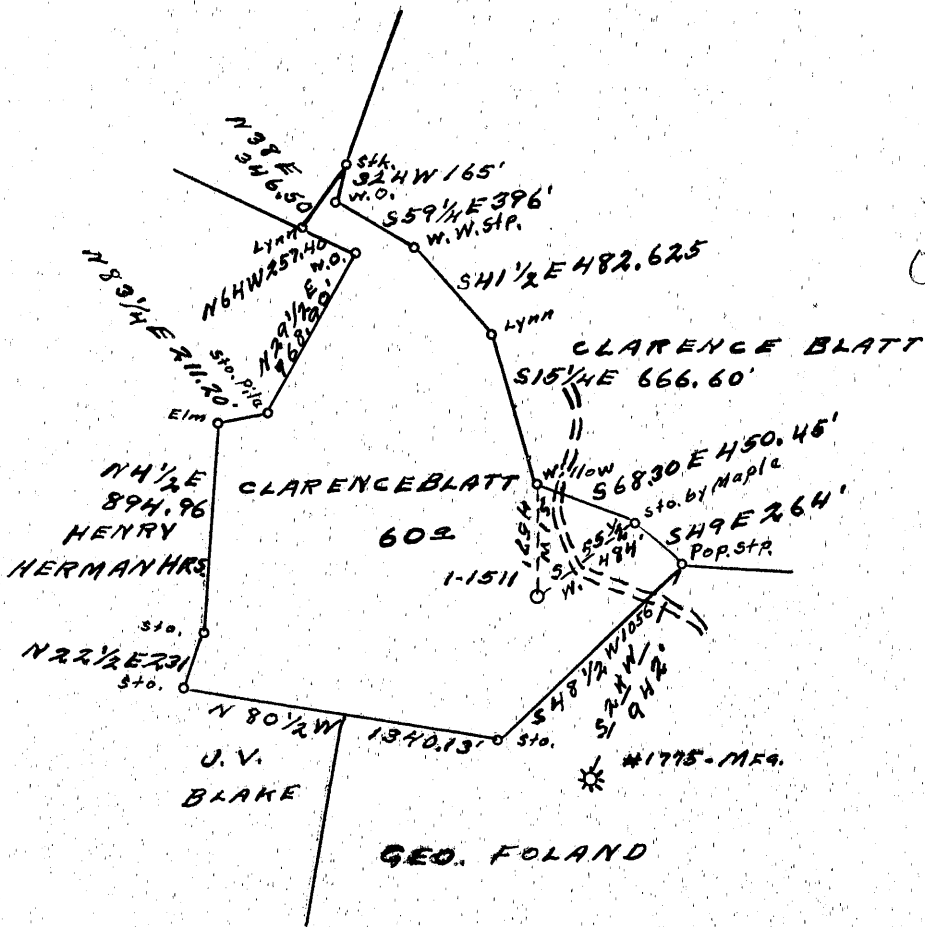


Latitude 39° 45'

Longitude 80° 40'



(+)
 3.26
 0.81W

137
 AMD
 2/37

NOW - MANUFACTURERS LIGHT & HEAT CO.

Company CARNEGIE NAT. GAS CO.
 Address PITTSBURGH, PENNA.
 Farm CLARENCE BLATT
 Tract TWO Acres 60 Lease No. 13779-77
 Well (Farm) No. ONE Serial No. 1511
 Elevation (Spirit Level) 1260 FEET
 Quadrangle LITTLETON (N.W. 1/4 SEC.)
 County WETZEL District PROCTOR
 Engineer D.T. Britton
 Engineer's Registration No. _____
 File No. _____ Drawing No. _____
 Date 10-27-36 Scale 1" = 800'

STATE OF WEST VIRGINIA
 DEPARTMENT OF MINES
 OIL AND GAS DIVISION
 CHARLESTON

WELL LOCATION MAP
 FILE NO. WET-137-REDRILL
STORAGE

+ Denotes location of well on United States Topographic Maps, scale 1 to 62,500, latitude and longitude lines being represented by border lines as shown.

- Denotes one inch spaces on border line of original tracing.



STATE OF WEST VIRGINIA
DEPARTMENT OF MINES
OIL AND GAS DIVISION

Quadrangle Littleton

Permit No. WET-137-R

WELL RECORD

Oil or Gas Well Gas
(KIND)

Stange

Company THE MANUFACTURERS LIGHT AND HEAT COMPANY

Address 800 UNION TRUST BLDG., PGH., PA.

Farm Clarence Blatt Acres 60

Location (waters)

Well No. 4384 (F-13827) Elev. 1260'

District Proctor County Wetzel

The surface of tract is owned in fee by _____
Address _____

Mineral rights are owned by _____
Address _____

Drilling commenced August 4, 1954

Drilling completed Sept. 14, 1954

Date Shot From _____ To _____

With _____

Open Flow 0/10ths Water in 3/8 Inch

0/10ths Merc. in _____ Inch

Volume 0.000 Cu. Ft.

Rock Pressure _____ lbs. _____ hrs.

Oil _____ bbls., 1st 24 hrs.

Fresh water _____ feet _____ feet

Salt water _____ feet _____ feet

Casing and Tubing	Used in Drilling	Left in Well	Packers
Size			Kind of Packer
16			
18			
10		239	Size of
8 1/4		1524	
6 5/8			Depth set
5 3/16			
4		2107	Perf. top
2			Perf. bottom
Liners Used			Perf. top
			Perf. bottom

CASING CEMENTED _____ SIZE _____ No. Ft. _____ Date _____

COAL WAS ENCOUNTERED AT _____ FEET _____ INCHES

_____ FEET _____ INCHES _____ FEET _____ INCHES

_____ FEET _____ INCHES _____ FEET _____ INCHES

Formation	Color	Hard or Soft	Top	Bottom	Oil, Gas or Water	Depth Found	Remarks
Top of maxon sand			2093	Schlumberger measurement			
Bottom of maxon sand			2100				
1st lead plug			2180	2177		2093	
2nd lead plug			2103	2100		1260	
Total Depth				2100		867	
Reconditioned for storage on Work Order No. 1451-L-730-4							

