

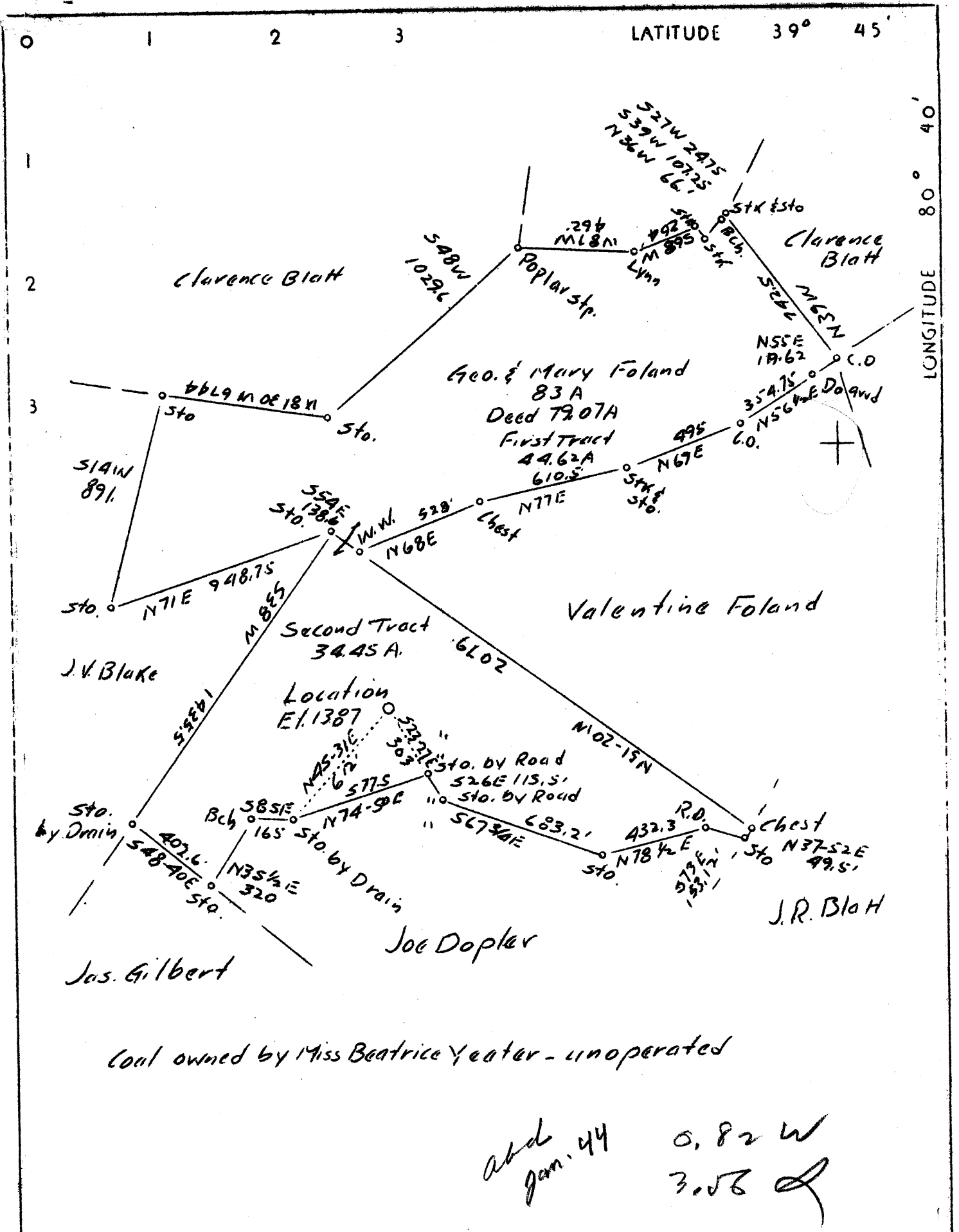
COAL OWNED BY Miss Beatrice Yeater (unoperated)
 Reopened x
 NEW LOCATION.....
 DRILL DEEPER.....
 ABANDONMENT.....

COMPANY The Manufacturers Light & Heat Co
 ADDRESS 800 Union Trust Bldg. Pgh. Pa.
 FARM George & Mary Foland
 TRACT _____ ACRES 83 LEASE NO. 26468
 WELL (FARM) NO. 2 SERIAL NO. 3547
 ELEVATION (SPIRIT-LEVEL) 1387'
 QUADRANGLE Littleton
 COUNTY Wetzel DISTRICT Proctor
 ENGINEER John A. Landon
 ENGINEER'S REGISTRATION NO. 12710
 FILE NO. _____ DRAWING NO. Y-13-877
 DATE 18 Aug. 1953 SCALE 1"=800'

STATE OF WEST VIRGINIA
 DEPARTMENT OF MINES
 OIL AND GAS DIVISION
 CHARLESTON

WELL LOCATION MAP
 FILE NO. Wet-158-REDRILL

+ DENOTES LOCATION OF WELL ON UNITED STATES TOPOGRAPHIC MAPS. SCALE 1 TO 62,500. LATITUDE AND LONGITUDE LINES BEING REPRESENTED BY BORDER LINES AS SHOWN.
 - DENOTES ONE INCH SPACES ON BORDER LINE OF ORIGINAL TRACING.



Company	The Manufacturers Light & Heat Co		
Address	800 Union Trust Bldg., Pittsburgh Pa		
Farm	George & Mary Foland		
Tract	Acres	83	Lease No. 4918
Well (Farm) No.	2	Serial No.	3547
Elevation (Spirit Level)	1387'		
Quadrangle	Littloton nw		
County	Wetzel	District	Proctor
Engineer	John A. Loudon		
Engineer's Registration No			
File No	Drawing No. Y-7-674		
Date	5-20-37	Scale	1" - 500'

STATE OF WEST VIRGINIA
 Department of Mines
 OIL AND GAS DIVISION
 Charleston

WELL LOCATION MAP
 File No WVET-158

+ Denotes location of well on U. S. Topographic Maps, scale 1 to 62,500 latitude and longitude lines being represented by border lines as shown.

— Denotes one inch spaces on border line of original tracing.



STATE OF WEST VIRGINIA
DEPARTMENT OF MINES
OIL AND GAS DIVISION

Siddleton

WELL RECORD

Permit No. 158
WET 148-Redrill

Oil or Gas Well Gas

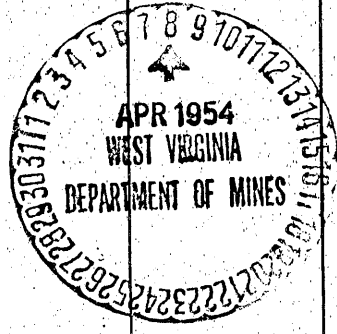
Company THE MANUFACTURERS LIGHT AND HEAT CO.
Address 800 Union Trust Bldg., Pgh., Penna.
Farm Geo. Foland Acres 83
Location (waters) _____
Well No. 3547 Elev. 1387'
District Proctor County Wetzel
The surface of tract is owned in fee by _____
Address _____
Mineral rights are owned by _____
Address _____
Drilling commenced November 1, 1952
Drilling completed February 15, 1954
Date Shot _____ From _____ To _____
With _____
Open Flow 5.6/10ths Water in 1½ Inch
/10ths Merc. in _____ Inch
Volume 131,968 Cu. Ft.
Rock Pressure 168 lbs. 56 hrs.
Oil _____ bbls., 1st 24 hrs.
Fresh water _____ feet _____ feet
Salt water _____ feet _____ feet

Casing and Tubing	Used in Drilling	Left in Well	Packers
Size			Kind of Packer
16			
13			
10		607'2"	Size of
8½		1702'4"	
6%			Depth set
5 8/16		2215'9"	
3			Perf. top
2			Perf. bottom
Liners Used			Perf. top
			Perf. bottom

CASING CEMENTED _____ SIZE _____ No. Ft. _____ Date _____

COAL WAS ENCOUNTERED AT _____ FEET _____ INCHES
_____ FEET _____ INCHES _____ FEET _____ INCHES
_____ FEET _____ INCHES _____ FEET _____ INCHES

Formation	Color	Hard or Soft	Top	Bottom	Oil, Gas or Water	Depth Found	Remarks
Top of Maxon Sand			2200	Schlumberger Measurement			
Bottom of Maxon Sand			2212				
Lead Plug			2208	Casing Centralizers set at following			
Total Depth			2208	depths from bottom			
				1 - 61'2"			
				2 - 157'3"			
				3 - 411'9"			
				4 - 623'10"			
				5 - 872'4"			
				6 - 1506'5"			
				7 - 2105'9"			



WEST VIRGINIA DEPARTMENT OF MINES

OIL & GAS DIVISION

W E L L R E C O R D

Permit No. 158 WET

Gas Well

Littleton Quad.

Company Manufacturers Light & Heat
 Address 800 Union Trust Bldg.,
 Pittsburgh, Pa.
 Farm George Foland - Acres 83
 Well No. 3547 Elev. 1387
 District Proctor - County Wetzel
 Surface George Foland
 Drilling Commenced July 21, 1937
 Completed Aug. 16, 1937
 Volume 568,360 cu. ft.
 R.P. 285 lbs. 48 hrs.
 F. Water None

Size	CASING	
	Used	Left in Well
Conductor	16	16
10	622'10"	622'10"
8-1/4	1738	1738
6-5/8	2207'7"	2207'7"

Feet	COAL	
	Inches	
1111	24	
1212	24	

Formation Color ^{Hor} TOP Base Result					Formation Color ^{Hor} TOP Base Result					
Red	Rock		0	14				1285	1320	
	Sand		14	50				1320	1350	
	Slate		50	125				1350	1415	
	Lime	Red	125	135				1415	1420	
	Slate		135	235				1420	1450	
	Red Rock	Red	235	250				1450	1493	
	Slate		250	260				1493	1515	
	Red Rock	Red	260	270				1515	1550	
	Slate		270	310				1550	1565	
	Lime		310	344				1565	1572	
	Red Rock	Red	344	384				1572	1584	
	Slate		384	397				1584	1604	
	Red Rock	Red	397	456				1604	1610	
	Slate		456	466				1610	1645	
	Red Rock	Red	466	483				1645	1655	
	Slate		483	565				1655	1665	
	Red Rock	Red	565	575				1665	1685	
	Lime		575	585				1685	1698	
	Slate		585	625				1698	1718	
	Lime		625	635				1718	1730	
	Slate		635	640				1730	1755	
	Red Rock	Red	640	662				1755	1775	
	Slate		662	710				1775	1785	
	Lime		710	727				1785	1825	
	Slate		727	730				1825	1935	
	Red Rock	Red	730	745				1935	1960	
	Slate		745	845	Show			1960	2037	
	Sand		845	878	of			2035	2110	
	Lime		878	890	Coal			2110	2143	
	Slate		890	918	825'			2143	2207	
	Lime		918	940				2207	2218	
	Red Rock	Red	940	950				2218	2223	
	Slate		950	985				2218	2223	
	Lime		985	1015						
	Red Rock	Red	1015	1050						
	Lime		1050	1106						
	Slate		1106	1111						
	Mapltown Coal	Black	1111	1113	Soft					
	Slate		1113	1117						
	Lime		1117	1152						
	Slate		1152	1160						
	Lime		1160	1170						
	Slate		1170	1212						
	Pitts Coal	Blk. S	1212	1214						
	Slate		1214	1245						
	Sand		1245	1260						
	Red Rock	Red	1260	1267						
	Slate		1267	1285						

1387
1111
276

1387
1212
175

1300
1387
713