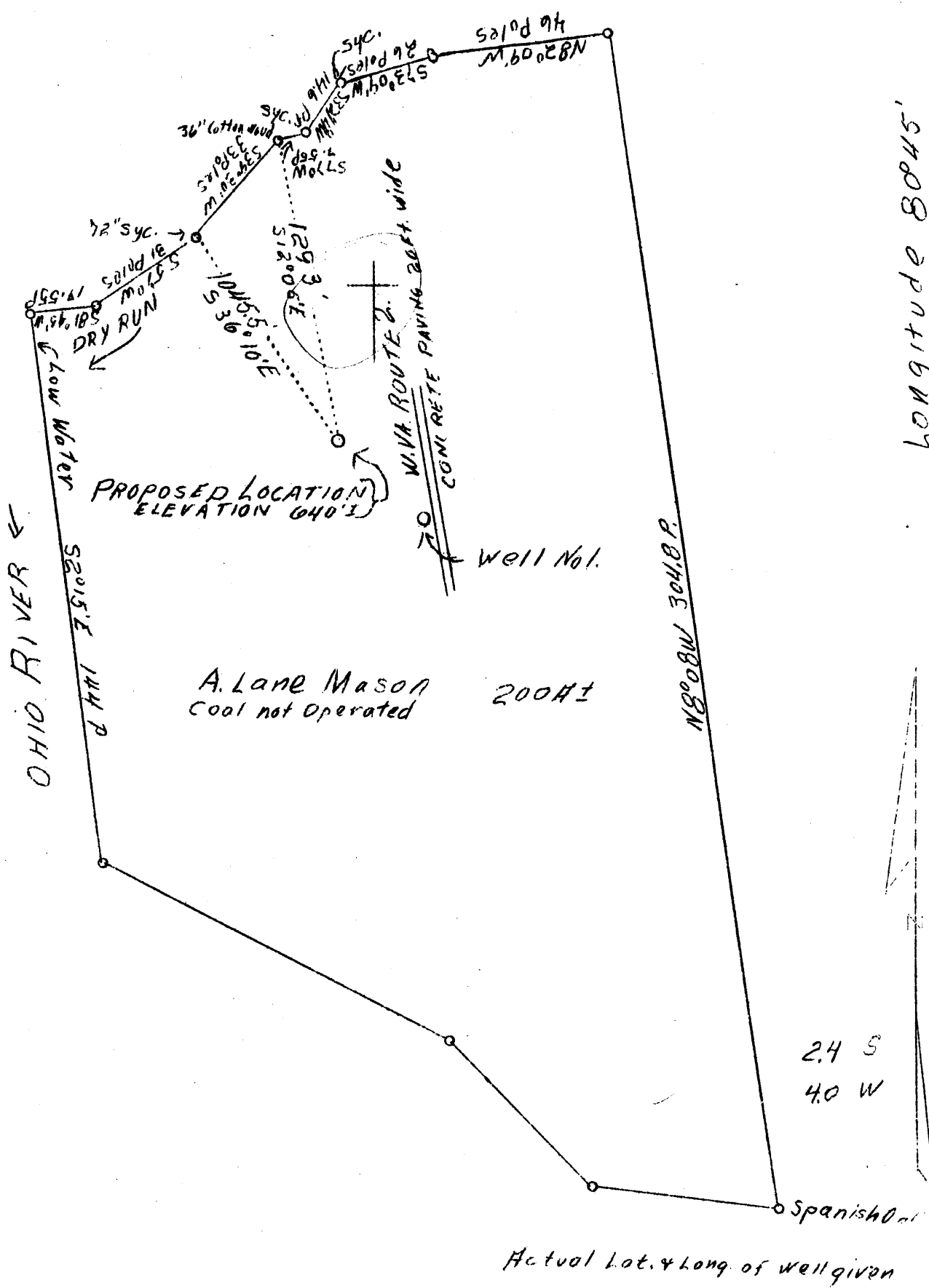


Latitude 39°45'

Longitude 80°45'



Company	Hazlett Bros. & Conley
Address	74-6th St., McMechen, W. Va.
Farm	A. Lane Mason
Acres	217 plus
Well (Farm) No.	2
Quadrangle	New Martinsville <i>N1E</i>
County	Wetzel
District	Proctor
Engineer	Walter W. Stegman
Eng. Reg. No.	394
File No.	O. W.
Date	July 16, 1938
Scale	1" = 600'

STATE OF WEST VIRGINIA
 Department of Mines
 OIL & GAS DIVISION
 Charleston

WELL LOCATION MAP
 File No. *Wet-188*

x Denotes location of well on U. S. Topographic Maps, scale 1 to 62,500, latitude and longitude lines being represented by border lines as shown.

- Denotes one inch spaces on border line of original tracing.

Cl-640'

WEST VIRGINIA DEPARTMENT OF MINES

OIL & GAS DIVISION

WELL RECORD

Permit No. Vet-188

Gas Well

New Martinsville Quad.

CASING & TUBING

Company	Hazlett Bros. & Conley	8-1/4	67	67
Address	6th St. McMechen, W. Va.	6-5/8	200	465
Farm	A. Lane Mason ACRES 235	5-3/16	465	
Well No.	Two ELEV. 640'	2		5521
District	Proctor County Wetzel	PACKER: Anchor		
Surface & Mineral	A. Lane Mason, Proctor, W. Va.	Size - 6-5/8 to 5-3/8		
Drilling commenced	July 13, 1938	Depth set - 465'		
Drilling completed	July 20, 1938			
Open Flow	60/10ths Water in 2-inch			
Rock Pressure	140 lbs. 24 hrs.			
Fresh Water	100'			

Formation Color ^{Har} 5 Top Base Result Formation Color ^{Har} 5 Top Base Result

Formation	Color	Har	5	Top	Base	Result	Formation	Color	Har	5	Top	Base	Result
Gravel				0		67							
Lime	white	h		67		100							
Slate	grey	s		100		110							
Lime	white	h		110		137							
M T Coal	black	s		137		138							
Lime	white	h		138		208							
Slate	grey	s		208		220							
Lime	white	h		220		232							
P. B. Coal	black	s		232		233							
Lime	white	h		233		240							
Shale	grey	s		240		260							
Lime	white	h		260		300							
Slate	grey	s		300		335							
Red Rock	red	s		335		435							
Lime Shells	wh.	h		435		772							
H N. Sand	gray	h		472		506	Gas 492						
Slate	grey	s		506		520							
Lime	white	h		520		542							
Cow Run S.	gray	s		542		552	Gas 545						

640
137
138
208

640
132
408

C