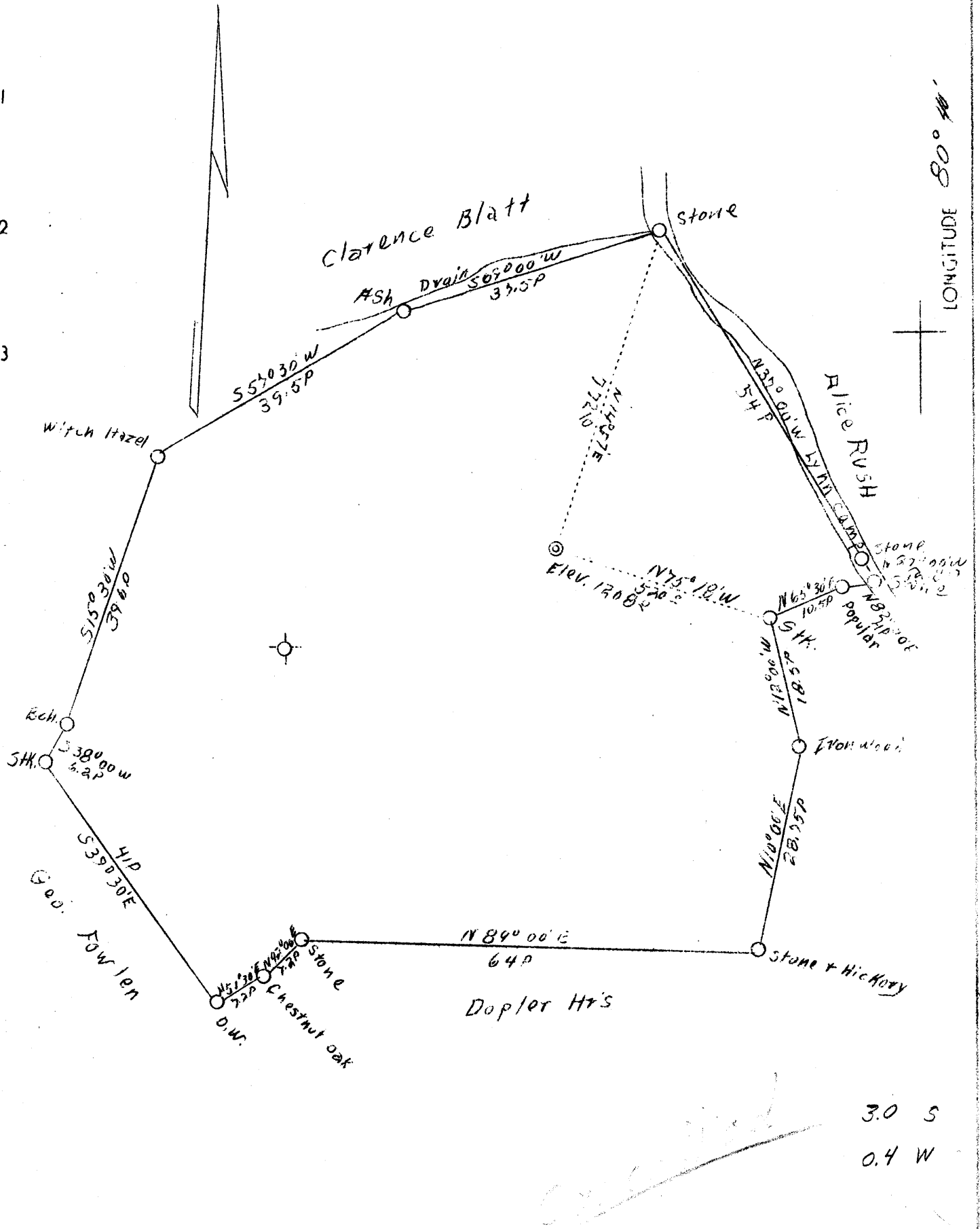


LATITUDE 39° 45'

LONGITUDE 80° 40'



3.0 S
0.4 W

Company	Miller & Lewis
Address	1004 Ann. Parkersburg, W. Va.
Farm	Clarence Blatt
Tract	One
Acres	45
Lease No.	6
Well (Farm) No.	2
Elevation	-
Quadrangle	Littleton NW
County	Netzel
District	Proctor
Engineer	G. L. McIntire
Eng. Reg. No.	-
Date	August 1, 1938
Scale	300' = 1"

STATE OF WEST VIRGINIA
Department of Mines
OIL & GAS DIVISION
Charleston

WELL LOCATION MAP
File No. Wet-189

x Denotes location of well on U. S. Topographic Maps, scale 1 to 62,500, latitude and longitude lines being represented by border lines as shown.

- Denotes one inch spaces on border line of original tracing.