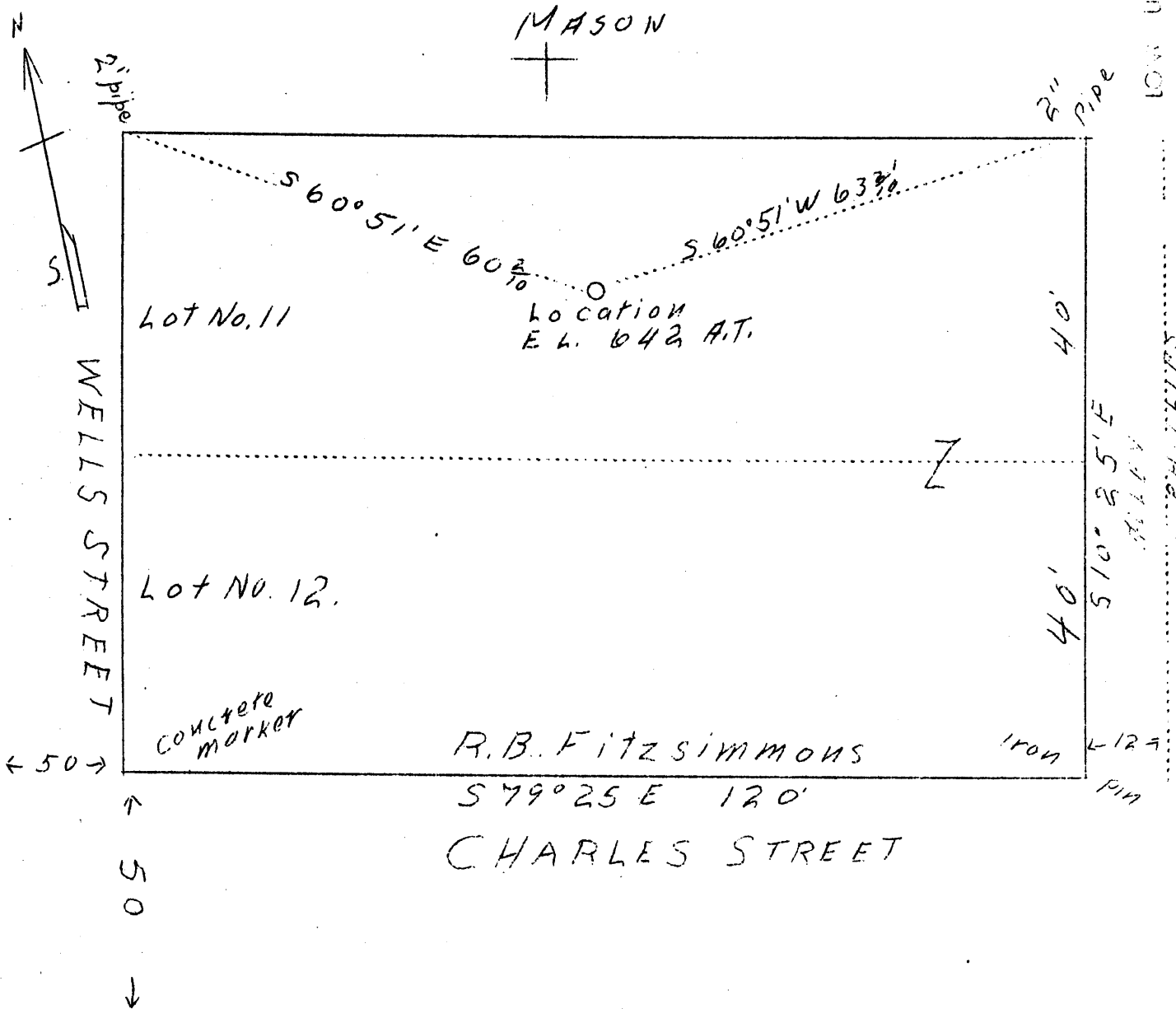


LATITUDE 39° 45'

MASON
+



R. B. FITZSIMMONS
S 79° 25' E 120'
CHARLES STREET

Rolla Fitzsimmons 3,95 W
2,54 S

New location

Company	T. E. Newton	STATE OF WEST VIRGINIA Department of Mines OIL & GAS DIVISION Charleston WELL LOCATION MAP File No. <u>Wet-199</u> x Denotes location of well on U. S. Topographic Maps, scale 1 to 62,500, latitude and longitude lines being represented by border lines as shown. - Denotes one inch spaces on border line of original tracing.
Address	New Martinsville, W. Va.	
Farm	R. B. Fitzsimmons	
Tract	2 lots	
Acres	11 & 12	
Well (Farm) No.	One	
Elevation (SP)	642	
Quadrangle	New Martinsville N. E.	
County	Wetzel	
District	Proctor	
Engineer	F. W. Parsons	
Eng. Reg. No.	203	
File No.	W.	
Date	August 14, 1938	
Scale	1" - 20'	